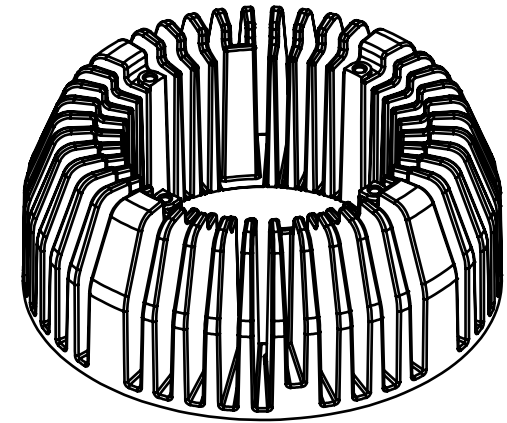
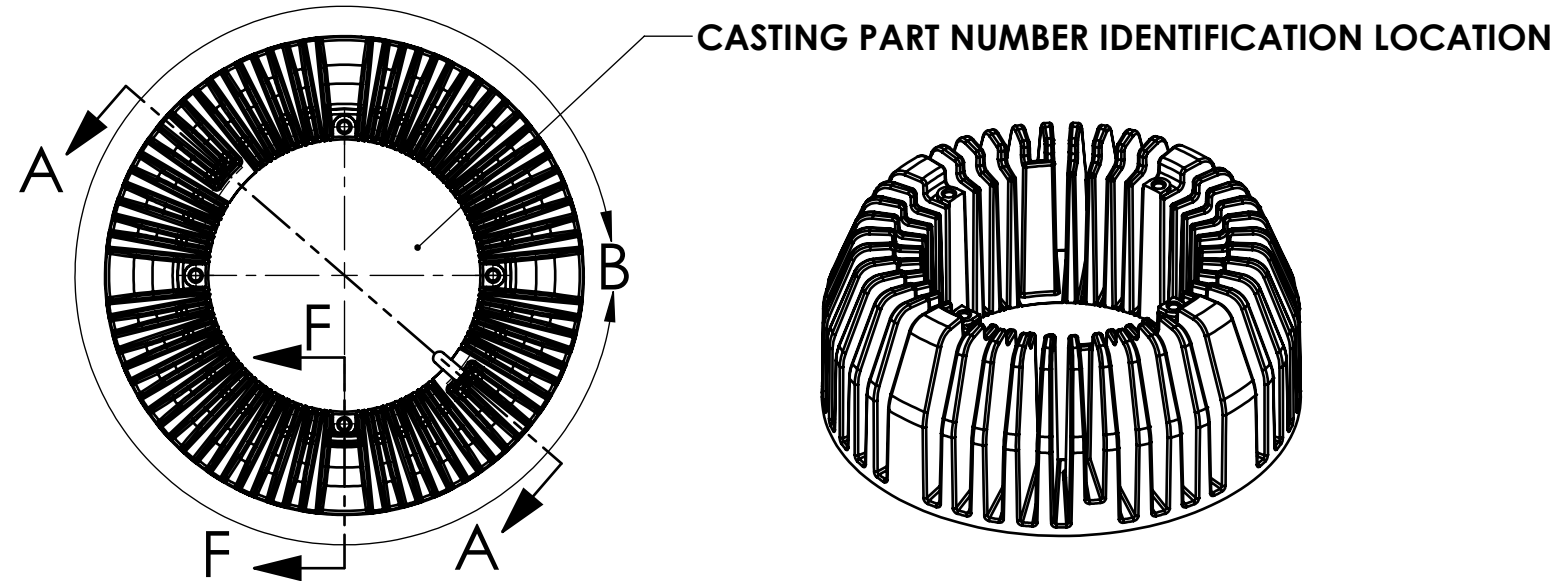
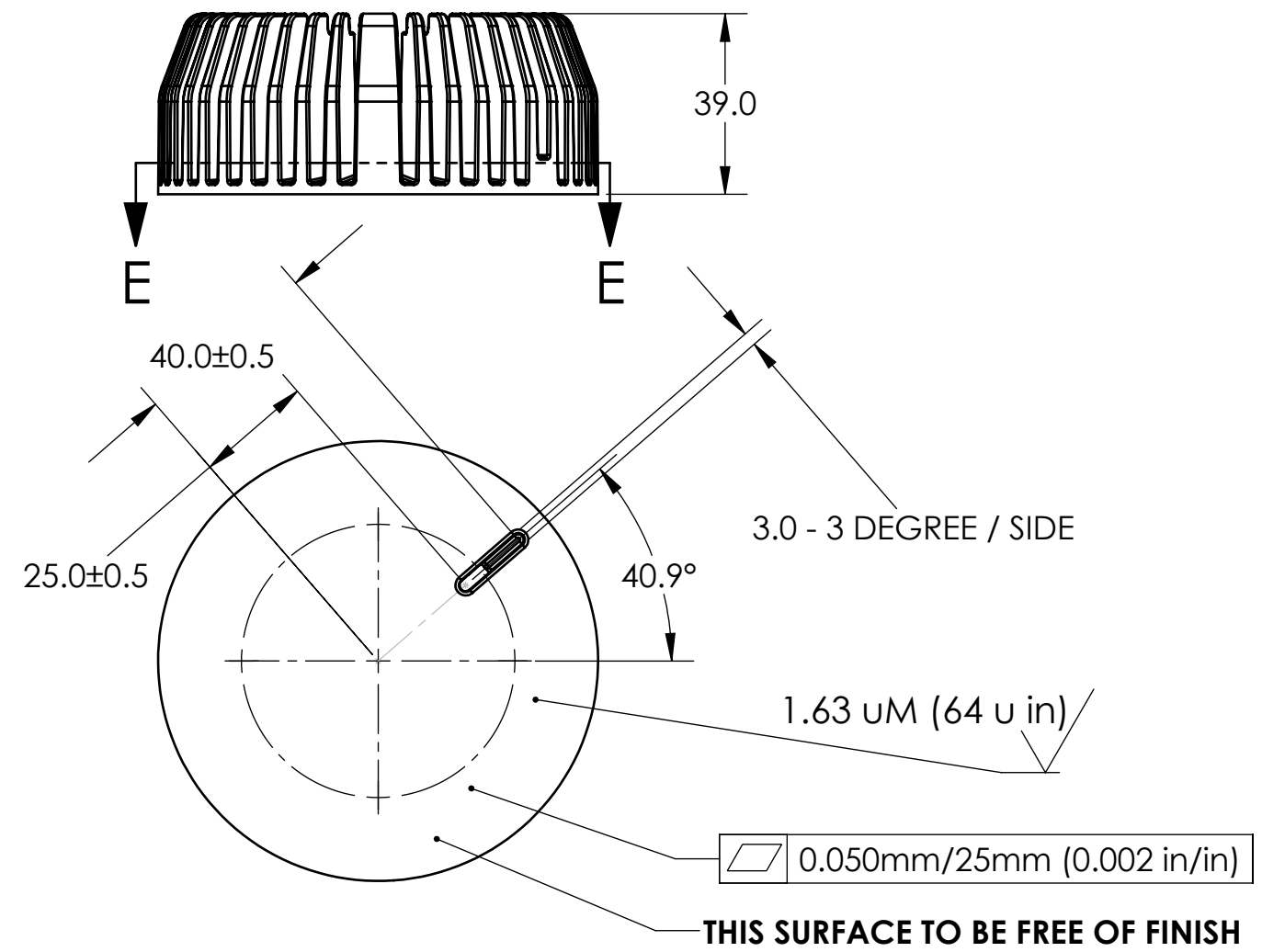


REV	DESCRIPTION	BY	APR	DATE
E01	RELEASE	DNG	DNG	2009-03-24



NOTES:

MATERIAL: A356 OR ADC-6 ALUMINUM
 FINISH: CATHODIC E-COAT WITH GLOSS BLACK EPOXY RESIN
 MASS: 274 GRAMS (APPROXIMATE)



UNLESS OTHERWISE SPECIFIED: -ALL DIMENSIONS IN MILLIMETERS -DRAFT ANGLES TO BE 3 DEGREES -DIMENSIONS INCLUDE PLATING TOLERANCES: .X: ± 0.2 .XX: ± 0.1 ANGLES: ±0.5°	NAME	DATE	
	DRAWN	DNG	
	CHECKED	DNG	
	ENG APPR.	DNG	TITLE: PAR30 HEATSINK
MATERIAL N/A FINISH N/A DO NOT SCALE DRAWING	THIRD ANGLE PROJECTION 		DWG. NO. HP30S-CALBL-001
SCALE: 1:1.5	SHEET 1 OF 3	REV E01	

PROPRIETARY AND CONFIDENTIAL: THE INFORMATION CONTAINED IN THIS DRAWING IS THE SOLE PROPERTY OF NUVENTIX, INC. ANY REPRODUCTION IN PART OR AS A WHOLE WITHOUT THE WRITTEN PERMISSION OF NUVENTIX, INC IS PROHIBITED.

8 7 6 5 4 3 2 1

D

D

C

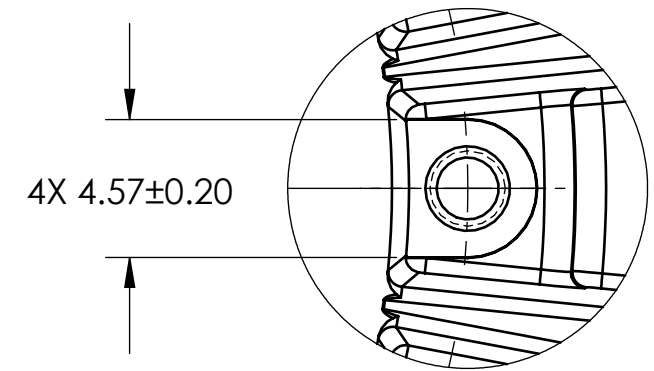
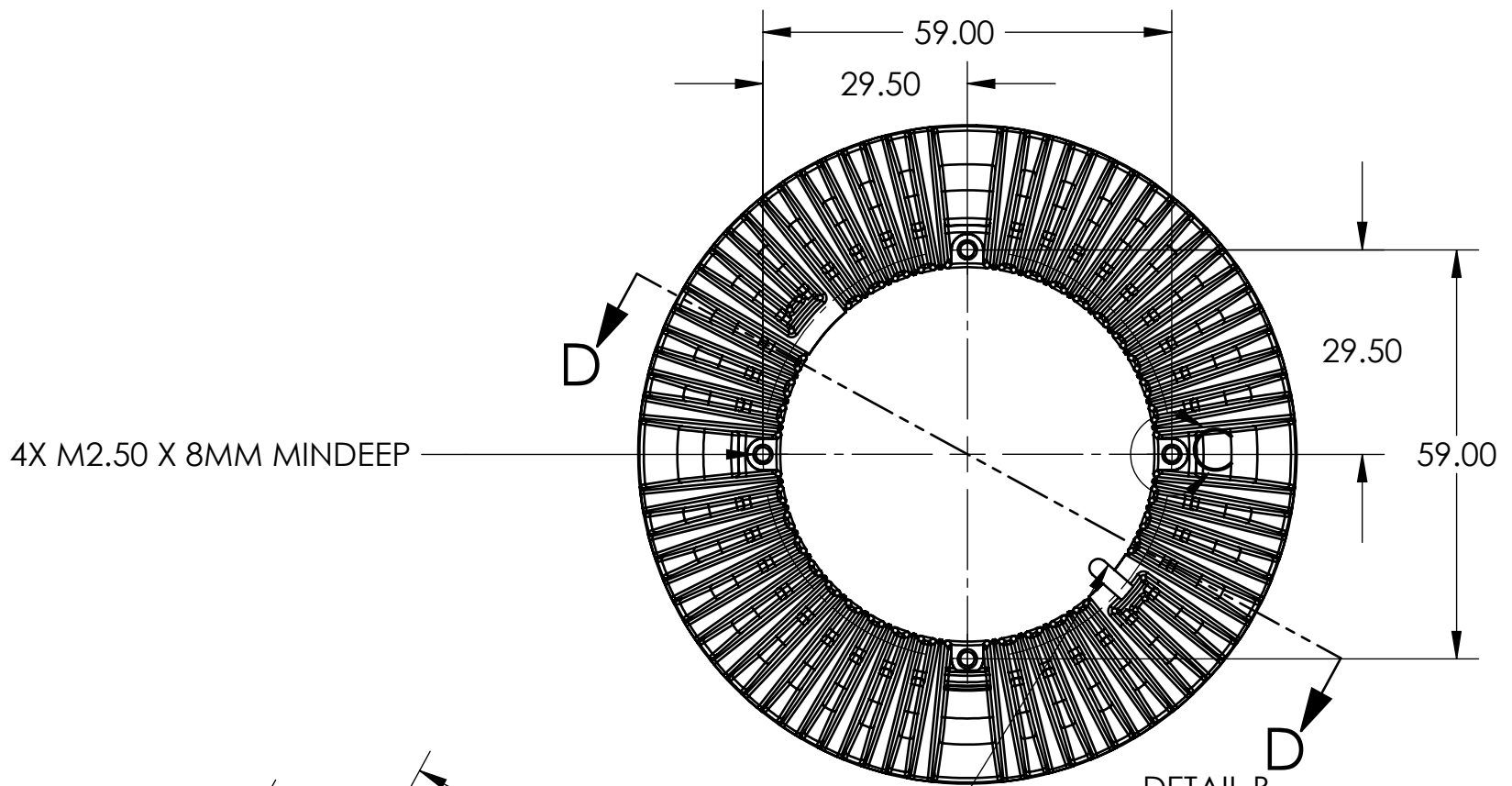
C

B

B

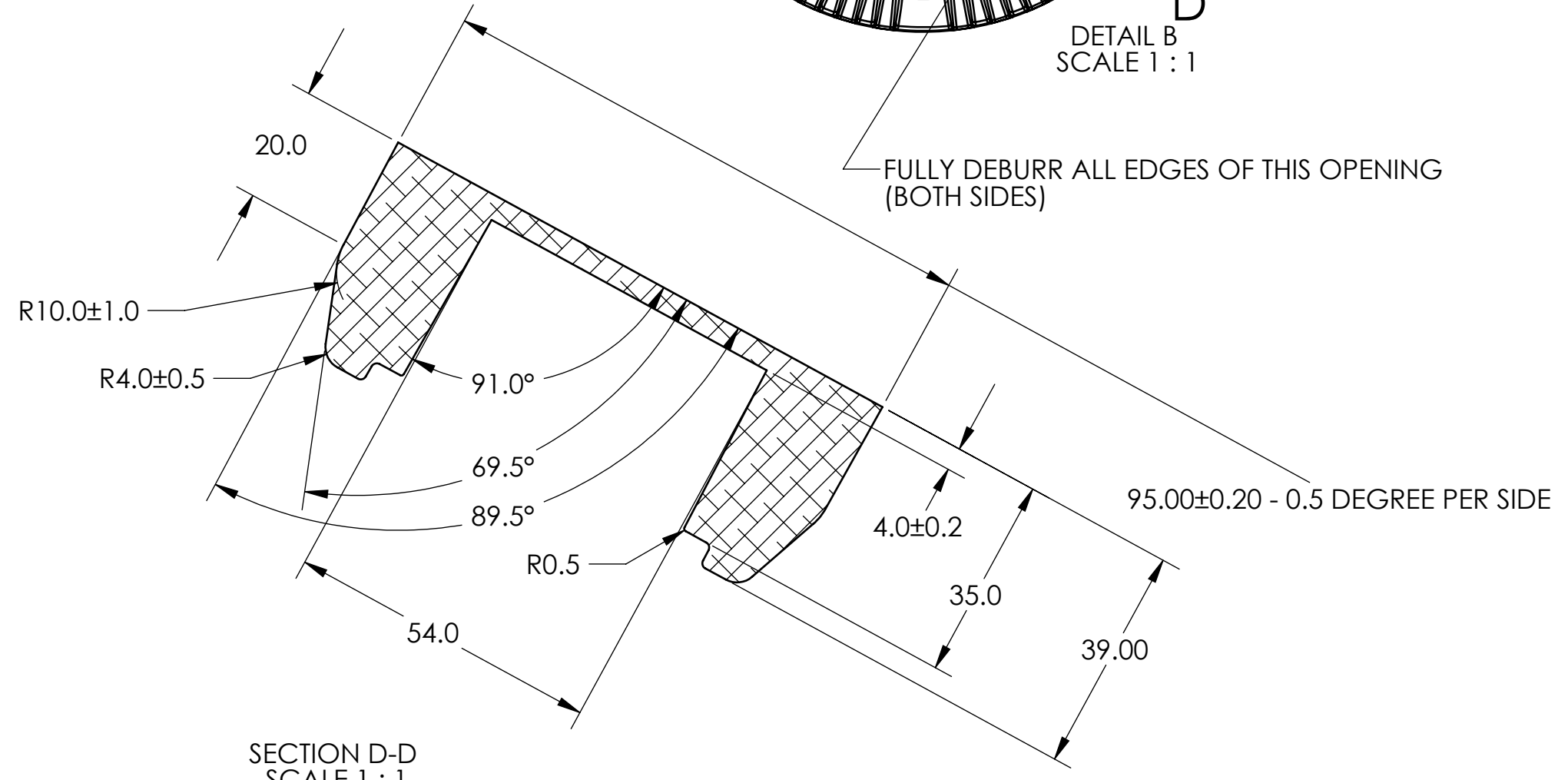
A

A



DETAIL B
SCALE 1 : 1

FULLY DEBURR ALL EDGES OF THIS OPENING
(BOTH SIDES)



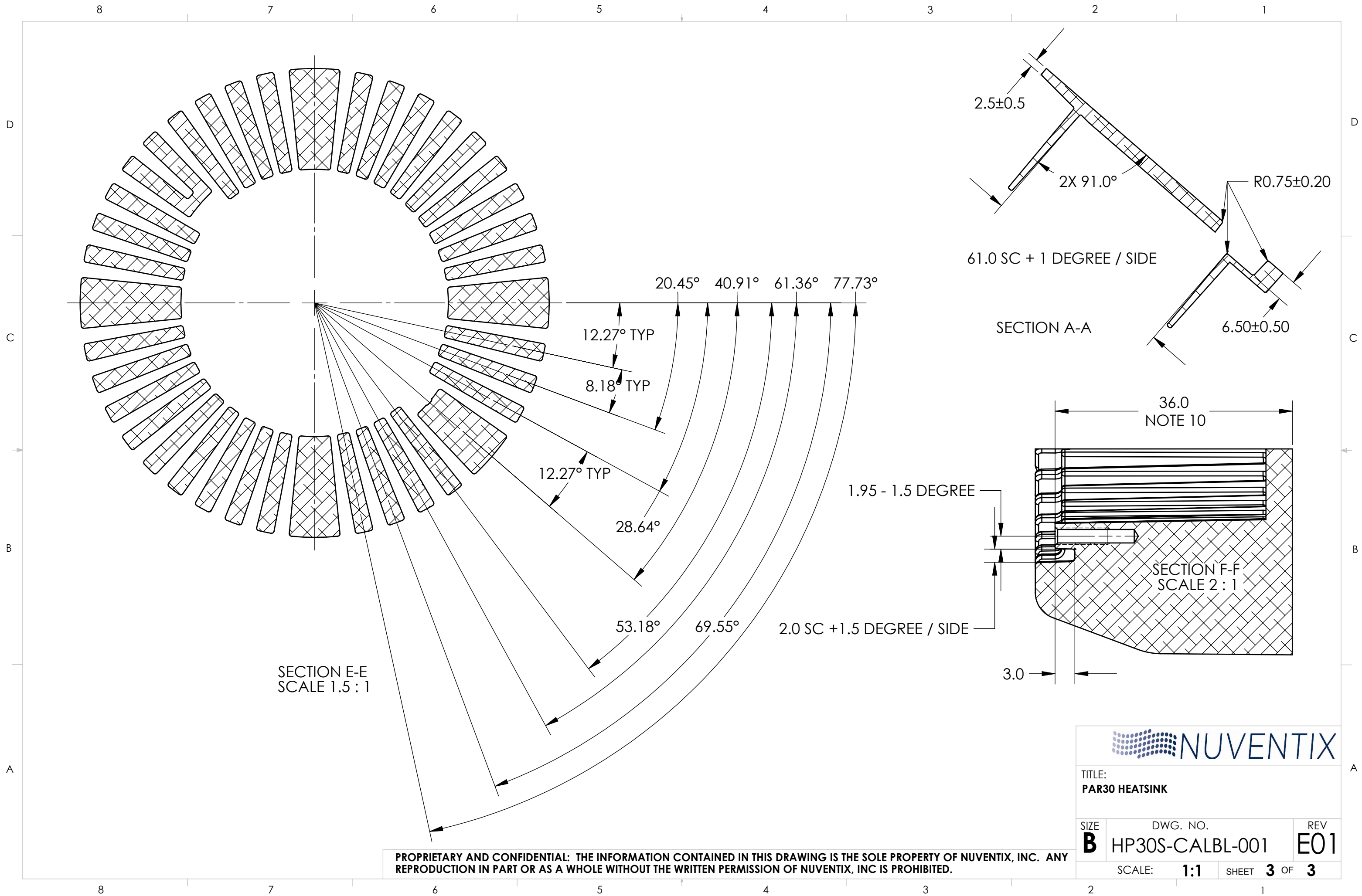
TITLE:
PAR30 HEATSINK

SIZE B	DWG. NO. HP30S-CALBL-001	REV E01
------------------	-----------------------------	-------------------

SCALE: 1:1.5 SHEET 2 OF 3

PROPRIETARY AND CONFIDENTIAL: THE INFORMATION CONTAINED IN THIS DRAWING IS THE SOLE PROPERTY OF NUVENTIX, INC. ANY REPRODUCTION IN PART OR AS A WHOLE WITHOUT THE WRITTEN PERMISSION OF NUVENTIX, INC IS PROHIBITED.

8 7 6 5 4 3 2 1



SECTION E-E
SCALE 1.5 : 1

SECTION A-A

SECTION F-F
SCALE 2 : 1

PROPRIETARY AND CONFIDENTIAL: THE INFORMATION CONTAINED IN THIS DRAWING IS THE SOLE PROPERTY OF NUVENTIX, INC. ANY REPRODUCTION IN PART OR AS A WHOLE WITHOUT THE WRITTEN PERMISSION OF NUVENTIX, INC IS PROHIBITED.

		
TITLE: PAR30 HEATSINK		
SIZE B	DWG. NO. HP30S-CALBL-001	REV E01
SCALE: 1:1		SHEET 3 OF 3