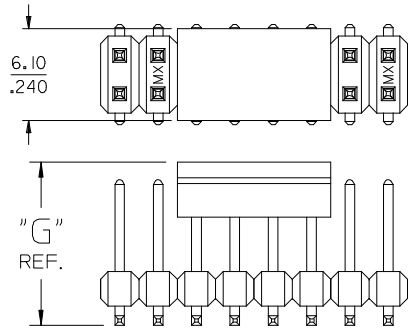
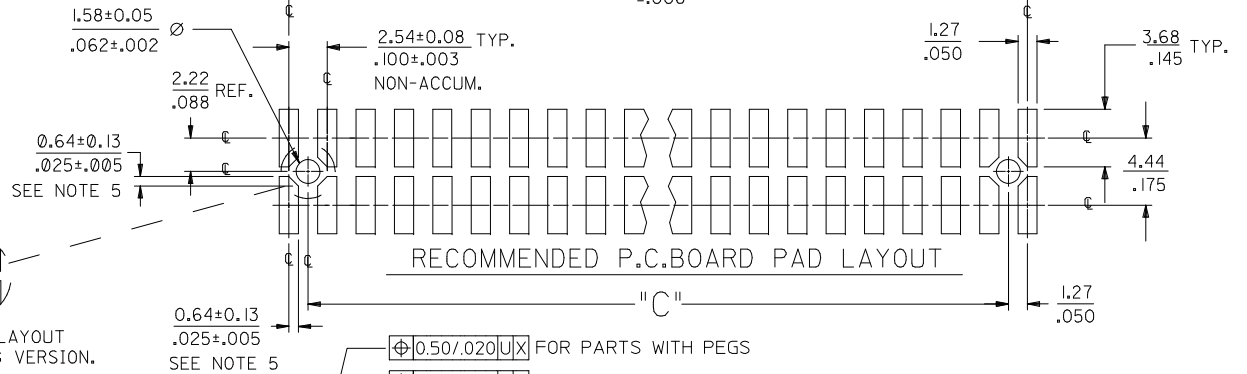


OPTIONAL
PICK AND PLACE CAP
SEE NOTES 4 & 9.



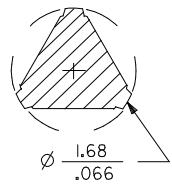
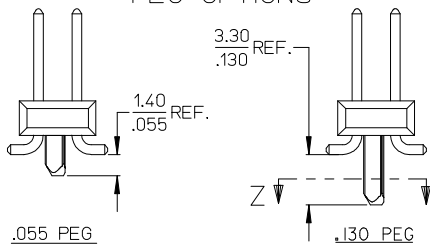
| DIM. "M" | DIM. "G" |
|--------------|---------------|
| 6.10 .240 | 10.67 .420 |
| 8.13 .320 | 12.70 .500 |



P.C. BOARD PAD LAYOUT
AT ENDS FOR NO PEG VERSION.

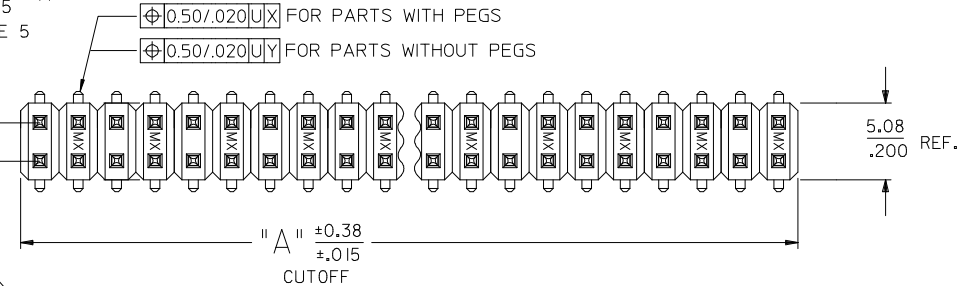


PEG OPTIONS



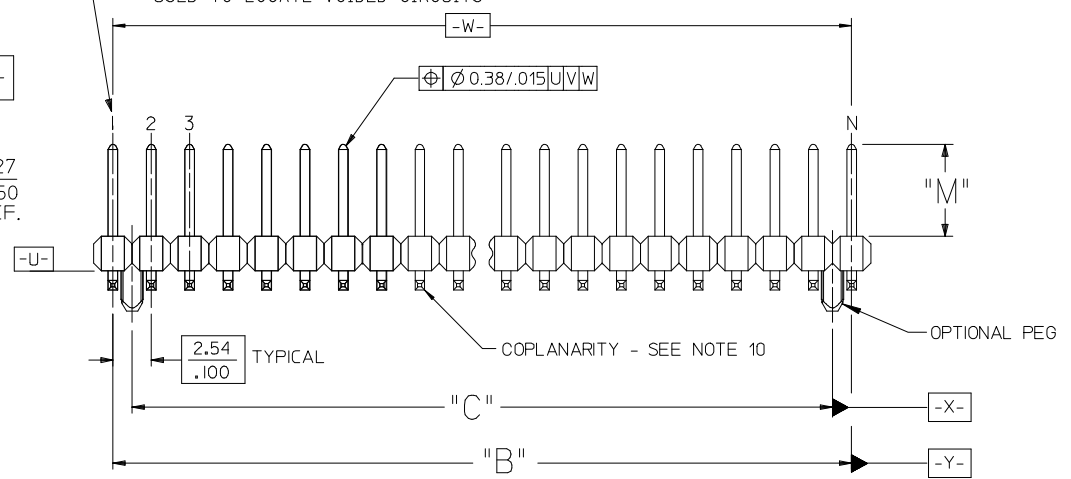
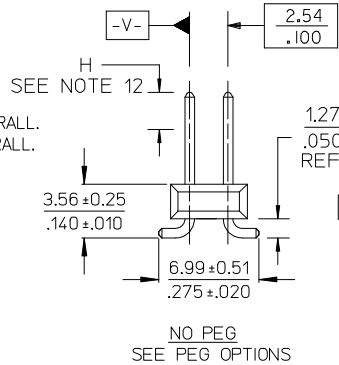
SECTION Z-Z

ROW "A"
ROW "B"



NOTES:

- MATERIALS: INSULATOR: GLASS FILLED LIQUID CRYSTAL POLYMER (LCP), UL94 V-0, COLOR: BLACK
TERMINAL: COPPER ALLOY
- FINISH:
59 TIN - 0.00150/.000059 MINIMUM BRIGHT TIN OVER NICKEL OVERALL.
150 TIN - 0.00381/.000150 MINIMUM BRIGHT TIN OVER NICKEL OVERALL.
15 GOLD - 0.00038/.000015 MINIMUM GOLD IN SELECT AREA OVER 0.00191/.000075 MINIMUM TIN IN SELECT AREA OVER NICKEL OVERALL.
30 GOLD - 0.00076/.000030 MINIMUM GOLD IN SELECT AREA OVER 0.00191/.000075 MINIMUM TIN IN SELECT AREA OVER NICKEL OVERALL.
50 GOLD - 0.00127/.000050 MINIMUM GOLD IN SELECT AREA OVER 0.00254/.000100 MINIMUM TIN IN SELECT AREA OVER NICKEL OVERALL.
- PART TO CONFORM TO PS-71308.
- PACKAGING (SEE CHARTS):
BULK: PER PK-70873-0353
TUBES: PER PK-70873-0041.
71308-82** IN TUBES: PER PK-70873-042.
TUBES W/ VAC CAPS: PER PK-70873-0691
TAPE AND REEL W/ VAC CAPS: PER PK-70873-0805.
SEE SHEET 3 FOR TAPE & REEL PRODUCT WITH SHALLOW POCKET REQUIREMENTS.
- TYP. DIMENSIONS FOR LANDS SURROUNDING HOLES FOR RETENTION PEGS.
- PIN SOLERABILITY PER MOLEX SPEC. ES-152.
- SEE SHEETS 2-5 FOR CHARTED DIMS, PART/EDP NO'S, AND VOIDED CIRCUITS.
- PIN PUSHOUT FORCE: 3 LBS. MINIMUM.
- PICK-N-PLACE CAPS WILL BE PLACED SO THAT VACUUM PICK UP AREA WILL BE IN CENTER OF PART.
- COPLANARITY FOR CIRCUIT SIZES UP TO 40 IS 0.15 MM/006 INCH.
FOR CIRCUIT SIZES 42 AND LARGER, CONTACT MOLEX SALES DEPARTMENT.
- THIS PART CONFORMS TO CLASS B REQUIREMENTS OF COSMETIC SPECIFICATION PS-45499-002.
- MEASURE POINT FOR PLATING THICKNESS.



| CORRECT DIM H | EC NO: UCP2014-0809 | DRW/MK/PPER 2013/08/20 | CHKD: BELL 2013/08/20 | APPR: FSM/TH 2013/09/03 | QUALITY SYMBOLS | GENERAL TOLERANCES (UNLESS SPECIFIED) | | DIMENSION STYLE | | SCALE | DESIGN UNITS | THIRD ANGLE PROJECTION |
|---|---------------------|------------------------|-----------------------|-------------------------|--|---------------------------------------|--------------|-----------------|----------------------|-------|--------------|------------------------|
| | | | | | | mm | INCH | MM/IN | INCH | INCH | INCH | INCH |
| 4 PLACES | ± --- | ± --- | DRAWN BY DATE | | KMS 1999/10/15 | | TITLE | | SALES ASSY INSULATOR | | | |
| 3 PLACES | ± --- | ± .005 | CHECKED BY DATE | | KMS 1999/10/15 | | DOCUMENT NO. | | SD-71308-001 | | | |
| 2 PLACES | ± 0.13 | ± .010 | APPROVED BY DATE | | KMS 1999/10/15 | | SHEET NO. | | 1 OF 6 | | | |
| 1 PLACE | ± 0.25 | ± --- | MATERIAL NO. | | SEE TABLES | | DOCUMENT NO. | | SD-71308-001 | | | |
| 0 PLACE | ± --- | ± --- | ANGULAR ±1/2° | | DRAFT WHERE APPLICABLE MUST REMAIN WITHIN DIMENSIONS | | MATERIAL NO. | | SD-71308-001 | | | |
| THIS DRAWING CONTAINS INFORMATION THAT IS PROPRIETARY TO MOLEX INCORPORATED AND SHOULD NOT BE USED WITHOUT WRITTEN PERMISSION | | | | | | SIZE C | | | | | | |

| | | | | | | | | | | | | | | |
|---|--------|-------------------------------|-------------|-------|----------------------------|----------------------|-------------|----------------------------|----------------------|-------------|----------------------------|----------------------|-------|-------|
| | 13 | 12 | 11 | 10 | 9 | 8 | 7 | 6 | 5 | 4 | 3 | 2 | 1 | |
| J | | PACKAGING SEE NOTE 4 SHT 1 | 4-6 CKT | BULK | TAPE-N-REEL W/ VAC CAPS | N/A | BULK | TAPE-N-REEL W/ VAC CAPS | N/A | BULK | TAPE-N-REEL W/ VAC CAPS | N/A | BULK | BULK |
| | | | 8-100 CKT | TUBES | TAPE-N-REEL W/ VAC CAPS | TUBES W/ VAC CAPS | TUBES | TAPE-N-REEL W/ VAC CAPS | TUBES W/ VAC CAPS | TUBES | TAPE-N-REEL W/ VAC CAPS | TUBES W/ VAC CAPS | TUBES | TUBES |
| | | DIM. M±0.25 MM | 6.10 (.240) | | | | 6.10 (.240) | | | | 6.10 (.240) | | | |
| | | PLATING | 150 TIN | | | | 15 GOLD | | | | 30 GOLD | | | |
| | DIM. H | 2.54 (.100) | | | | 2.54 (.100) | | | | 2.54 (.100) | | | | |

| I | CKTS | DIM. A | | DIM. B | | EDP NUMBER | EDP NUMBER | EDP NUMBER | EDP NUMBER | EDP NUMBER | EDP NUMBER | EDP NUMBER | EDP NUMBER | EDP NUMBER | EDP NUMBER | CKTS |
|-----|--------|--------|--------|--------|-------------|-------------|-------------|-------------|-------------|-------------|-------------|-------------|-------------|-------------|-------------|------|
| | | MM | IN | MM | IN | | | | | | | | | | | |
| 04 | 5.08 | .200 | 2.54 | .100 | 015-91-2040 | 015-91-6040 | N/A | 015-91-0040 | 015-91-6042 | N/A | 015-91-3040 | 015-91-6043 | N/A | 015-91-0048 | 015-91-5049 | 04 |
| 06 | 7.62 | .300 | 5.08 | .200 | 015-91-2060 | 015-91-6060 | N/A | 015-91-0060 | 015-91-6062 | N/A | 015-91-3060 | 015-91-6063 | N/A | 015-91-0068 | 015-91-5069 | 06 |
| 08 | 10.16 | .400 | 7.62 | .300 | 015-91-2080 | 015-91-6080 | 015-91-3087 | 015-91-0080 | 015-91-6082 | 015-91-3086 | 015-91-3080 | 015-91-6083 | 015-91-3088 | 015-91-0088 | 015-91-5089 | 08 |
| 10 | 12.70 | .500 | 10.16 | .400 | 015-91-2100 | 015-91-6100 | 015-91-3107 | 015-91-0100 | 015-91-6102 | 015-91-3106 | 015-91-3100 | 015-91-6103 | 015-91-3108 | 015-91-0108 | 015-91-5109 | 10 |
| 12 | 15.24 | .600 | 12.70 | .500 | 015-91-2120 | 015-91-6120 | 015-91-3127 | 015-91-0120 | 015-91-6122 | 015-91-3126 | 015-91-3120 | 015-91-6123 | 015-91-3128 | 015-91-0128 | 015-91-5129 | 12 |
| 14 | 17.78 | .700 | 15.24 | .600 | 015-91-2140 | 015-91-6140 | 015-91-3147 | 015-91-0140 | 015-91-6142 | 015-91-3146 | 015-91-3140 | 015-91-6143 | 015-91-3148 | 015-91-0148 | 015-91-5149 | 14 |
| 16 | 20.32 | .800 | 17.78 | .700 | 015-91-2160 | 015-91-6160 | 015-91-3167 | 015-91-0160 | 015-91-6162 | 015-91-3166 | 015-91-3160 | 015-91-6163 | 015-91-3168 | 015-91-0168 | 015-91-5169 | 16 |
| 18 | 22.86 | .900 | 20.32 | .800 | 015-91-2180 | | 015-91-3187 | 015-91-0180 | | 015-91-3186 | 015-91-3180 | | 015-91-3188 | 015-91-0188 | 015-91-5189 | 18 |
| 20 | 25.40 | 1.000 | 22.86 | .900 | 015-91-2200 | 015-91-6200 | 015-91-3207 | 015-91-0200 | 015-91-6202 | 015-91-3206 | 015-91-3200 | 015-91-6203 | 015-91-3208 | 015-91-0208 | 015-91-5209 | 20 |
| 22 | 27.94 | 1.100 | 25.40 | 1.000 | 015-91-2220 | | 015-91-3227 | 015-91-0220 | | 015-91-3226 | 015-91-3220 | | 015-91-3228 | 015-91-0228 | 015-91-5229 | 22 |
| 24 | 30.48 | 1.200 | 27.94 | 1.100 | 015-91-2240 | | 015-91-3247 | 015-91-0240 | | 015-91-3246 | 015-91-3240 | | 015-91-3248 | 015-91-0248 | 015-91-5249 | 24 |
| 26 | 33.02 | 1.300 | 30.48 | 1.200 | 015-91-2260 | 015-91-6260 | 015-91-3267 | 015-91-0260 | 015-91-6262 | 015-91-3266 | 015-91-3260 | | 015-91-3268 | 015-91-0268 | 015-91-5269 | 26 |
| 28 | 35.56 | 1.400 | 33.02 | 1.300 | 015-91-2280 | | 015-91-3287 | 015-91-0280 | | 015-91-3286 | 015-91-3280 | | 015-91-3288 | 015-91-0288 | 015-91-5289 | 28 |
| 30 | 38.10 | 1.500 | 35.56 | 1.400 | 015-91-2300 | | 015-91-3307 | 015-91-0300 | | 015-91-3306 | 015-91-3300 | | 015-91-3308 | 015-91-0308 | 015-91-5309 | 30 |
| 32 | 40.64 | 1.600 | 38.10 | 1.500 | 015-91-2320 | | 015-91-3327 | 015-91-0320 | | 015-91-3326 | 015-91-3320 | | 015-91-3328 | 015-91-0328 | 015-91-5329 | 32 |
| 34 | 43.18 | 1.700 | 40.64 | 1.600 | 015-91-2340 | | 015-91-3347 | 015-91-0340 | | 015-91-3346 | 015-91-3340 | | 015-91-3348 | 015-91-0348 | 015-91-5349 | 34 |
| 36 | 45.72 | 1.800 | 43.18 | 1.700 | 015-91-2360 | | 015-91-3367 | 015-91-0360 | | 015-91-3366 | 015-91-3360 | | 015-91-3368 | 015-91-0368 | 015-91-5369 | 36 |
| 38 | 48.26 | 1.900 | 45.72 | 1.800 | 015-91-2380 | | 015-91-3387 | 015-91-0380 | | 015-91-3386 | 015-91-3380 | | 015-91-3388 | 015-91-0388 | 015-91-5389 | 38 |
| 40 | 50.80 | 2.000 | 48.26 | 1.900 | 015-91-2400 | 015-91-6400 | 015-91-3407 | 015-91-0400 | 015-91-6402 | 015-91-3406 | 015-91-3400 | 015-91-6403 | 015-91-3408 | 015-91-0408 | 015-91-5409 | 40 |
| 42 | 53.34 | 2.100 | 50.80 | 2.000 | 015-91-2420 | | 015-91-3427 | 015-91-0420 | | 015-91-3426 | 015-91-3420 | | 015-91-3428 | 015-91-0428 | 015-91-5429 | 42 |
| 44 | 55.88 | 2.200 | 53.34 | 2.100 | 015-91-2440 | | 015-91-3447 | 015-91-0440 | | 015-91-3446 | 015-91-3440 | | 015-91-3448 | 015-91-0448 | 015-91-5449 | 44 |
| 46 | 58.42 | 2.300 | 55.88 | 2.200 | 015-91-2460 | | 015-91-3467 | 015-91-0460 | | 015-91-3466 | 015-91-3460 | | 015-91-3468 | 015-91-0468 | 015-91-5469 | 46 |
| 48 | 60.96 | 2.400 | 58.42 | 2.300 | 015-91-2480 | | 015-91-3487 | 015-91-0480 | | 015-91-3486 | 015-91-3480 | | 015-91-3488 | 015-91-0488 | 015-91-5489 | 48 |
| 50 | 63.50 | 2.500 | 60.96 | 2.400 | 015-91-2500 | 015-91-6500 | 015-91-3507 | 015-91-0500 | 015-91-6502 | 015-91-3506 | 015-91-3500 | 015-91-6503 | 015-91-3508 | 015-91-0508 | 015-91-5509 | 50 |
| 52 | 66.04 | 2.600 | 63.50 | 2.500 | 015-91-2520 | | 015-91-3527 | 015-91-0520 | | 015-91-3526 | 015-91-3520 | | 015-91-3528 | 015-91-0528 | 015-91-5529 | 52 |
| 54 | 68.58 | 2.700 | 66.04 | 2.600 | 015-91-2540 | | 015-91-3547 | 015-91-0540 | | 015-91-3546 | 015-91-3540 | | 015-91-3548 | 015-91-0548 | 015-91-5549 | 54 |
| 56 | 71.12 | 2.800 | 68.58 | 2.700 | 015-91-2560 | | 015-91-3567 | 015-91-0560 | | 015-91-3566 | 015-91-3560 | | 015-91-3568 | 015-91-0568 | 015-91-5569 | 56 |
| 58 | 73.66 | 2.900 | 71.12 | 2.800 | 015-91-2580 | | 015-91-3587 | 015-91-0580 | | 015-91-3586 | 015-91-3580 | | 015-91-3588 | 015-91-0588 | 015-91-5589 | 58 |
| 60 | 76.20 | 3.000 | 73.66 | 2.900 | 015-91-2600 | | 015-91-3607 | 015-91-0600 | | 015-91-3606 | 015-91-3600 | | 015-91-3608 | 015-91-0608 | 015-91-5609 | 60 |
| 62 | 78.74 | 3.100 | 76.20 | 3.000 | 015-91-2620 | | 015-91-3627 | 015-91-0620 | | 015-91-3626 | 015-91-3620 | | 015-91-3628 | 015-91-0628 | 015-91-5629 | 62 |
| 64 | 81.28 | 3.200 | 78.74 | 3.100 | 015-91-2640 | | 015-91-3647 | 015-91-0640 | | 015-91-3646 | 015-91-3640 | | 015-91-3648 | 015-91-0648 | 015-91-5649 | 64 |
| 66 | 83.82 | 3.300 | 81.28 | 3.200 | 015-91-2660 | | 015-91-3667 | 015-91-0660 | | 015-91-3666 | 015-91-3660 | | 015-91-3668 | 015-91-0668 | 015-91-5669 | 66 |
| 68 | 86.36 | 3.400 | 83.82 | 3.300 | 015-91-2680 | | 015-91-3687 | 015-91-0680 | | 015-91-3686 | 015-91-3680 | | 015-91-3688 | 015-91-0688 | 015-91-5689 | 68 |
| 70 | 88.90 | 3.500 | 86.36 | 3.400 | 015-91-2700 | | 015-91-3707 | 015-91-0700 | | 015-91-3706 | 015-91-3700 | | 015-91-3708 | 015-91-0708 | 015-91-5709 | 70 |
| 72 | 91.44 | 3.600 | 88.90 | 3.500 | 015-91-2720 | | 015-91-3727 | 015-91-0720 | | 015-91-3726 | 015-91-3720 | | 015-91-3728 | 015-91-0728 | 015-91-5729 | 72 |
| 74 | 93.98 | 3.700 | 91.44 | 3.600 | 015-91-2740 | | 015-91-3747 | 015-91-0740 | | 015-91-3746 | 015-91-3740 | | 015-91-3748 | 015-91-0748 | 015-91-5749 | 74 |
| 76 | 96.52 | 3.800 | 93.98 | 3.700 | 015-91-2760 | | 015-91-3767 | 015-91-0760 | | 015-91-3766 | 015-91-3760 | | 015-91-3768 | 015-91-0768 | 015-91-5769 | 76 |
| 78 | 99.06 | 3.900 | 96.52 | 3.800 | 015-91-2780 | | 015-91-3787 | 015-91-0780 | | 015-91-3786 | 015-91-3780 | | 015-91-3788 | 015-91-0788 | 015-91-5789 | 78 |
| 80 | 101.60 | 4.000 | 99.06 | 3.900 | 015-91-2800 | | 015-91-3807 | 015-91-0800 | | 015-91-3806 | 015-91-3800 | | 015-91-3808 | 015-91-0808 | 015-91-5809 | 80 |
| 82 | 104.14 | 4.100 | 101.60 | 4.000 | 71308-0082 | | 71308-0482 | 71308-0182 | | 71308-0582 | 71308-0282 | | 71308-0682 | 71308-1182 | 71308-1282 | 82 |
| 84 | 106.68 | 4.200 | 104.14 | 4.100 | 71308-0084 | | 71308-0484 | 71308-0184 | | 71308-0584 | 71308-0284 | | 71308-0684 | 71308-1184 | 71308-1284 | 84 |
| 86 | 109.22 | 4.300 | 106.68 | 4.200 | 71308-0086 | | 71308-0486 | 71308-0186 | | 71308-0586 | 71308-0286 | | 71308-0686 | 71308-1186 | 71308-1286 | 86 |
| 88 | 111.76 | 4.400 | 109.22 | 4.300 | 71308-0088 | | 71308-0488 | 71308-0188 | | 71308-0588 | 71308-0288 | | 71308-0688 | 71308-1188 | 71308-1288 | 88 |
| 90 | 114.30 | 4.500 | 111.76 | 4.400 | 71308-0090 | | 71308-0490 | 71308-0190 | | 71308-0590 | 71308-0290 | | 71308-0690 | 71308-1190 | 71308-1290 | 90 |
| 92 | 116.84 | 4.600 | 114.30 | 4.500 | 71308-0092 | | 71308-0492 | 71308-0192 | | 71308-0592 | 71308-0292 | | 71308-0692 | 71308-1192 | 71308-1292 | 92 |
| 94 | 119.38 | 4.700 | 116.84 | 4.600 | 71308-0094 | | 71308-0494 | 71308-0194 | | 71308-0594 | 71308-0294 | | 71308-0694 | 71308-1194 | 71308-1294 | 94 |
| 96 | 121.92 | 4.800 | 119.38 | 4.700 | 71308-0096 | | 71308-0496 | 71308-0196 | | 71308-0596 | 71308-0296 | | 71308-0696 | 71308-1196 | 71308-1296 | 96 |
| 98 | 124.46 | 4.900 | 121.92 | 4.800 | 71308-0098 | | 71308-0498 | 71308-0198 | | 71308-0598 | 71308-0298 | | 71308-0698 | 71308-1198 | 71308-1298 | 98 |
| 100 | 127.00 | 5.000 | 124.46 | 4.900 | 71308-0101 | | 71308-0500 | 71308-0200 | | 71308-0600 | 71308-0300 | | 71308-0700 | 71308-1200 | 71308-1300 | 100 |

| B | <p style="text-align: center; font-size: 2em; font-weight: bold;">NO PEG VERSION</p> <p style="text-align: center;">(SEE ALSO SHEET 3)</p> | <p>SEE SHEET 1</p> <p>EC NO: UCP2014-0809</p> <p>DRWING/PPER 2013/08/20</p> <p>CHKD:JBELL 2013/08/20</p> <p>APPR:F5M1TH 2013/09/03</p> | <p>QUALITY SYMBOLS</p> <p>▽=0</p> <p>▽=0</p> <p>▽=0</p> | <p>GENERAL TOLERANCES (UNLESS SPECIFIED)</p> <table border="1"> <tr> <th></th> <th>MM</th> <th>INCH</th> </tr> <tr> <td>4 PLACES</td> <td>± .005</td> <td>± .0005</td> </tr> <tr> <td>3 PLACES</td> <td>± .005</td> <td>± .0010</td> </tr> <tr> <td>2 PLACES</td> <td>± 0.13</td> <td>± .005</td> </tr> <tr> <td>1 PLACE</td> <td>± .025</td> <td>± .001</td> </tr> <tr> <td>0 PLACE</td> <td>± .005</td> <td>± .001</td> </tr> </table> <p>ANGULAR ±1/2°</p> <p>DRAFT WHERE APPLICABLE MUST REMAIN WITHIN DIMENSIONS</p> | | MM | INCH | 4 PLACES | ± .005 | ± .0005 | 3 PLACES | ± .005 | ± .0010 | 2 PLACES | ± 0.13 | ± .005 | 1 PLACE | ± .025 | ± .001 | 0 PLACE | ± .005 | ± .001 | <p>DIMENSION STYLE</p> <p>MM/IN</p> <p>DRAWN BY DATE</p> <p>KMS 1999/10/15</p> <p>CHECKED BY DATE</p> <p>KMS 1999/10/15</p> <p>APPROVED BY DATE</p> <p>KMS 1999/10/15</p> | <p>SCALE</p> <p>DESIGN UNITS</p> <p>INCH</p> <p>THIRD ANGLE PROJECTION</p> | <p>TITLE</p> <p style="text-align: center; font-weight: bold;">SALES ASSY INSULATOR DUAL ROW SMT W/BREAK-OFF .025SQ PIN GULLWING .100</p> <p style="text-align: center; font-size: 1.5em; font-weight: bold;">molex</p> | <p>DOCUMENT NO.</p> <p style="text-align: center; font-weight: bold;">SD-71308-001</p> | <p>SHEET NO.</p> <p style="text-align: center;">2 OF 6</p> |
|----------|--|--|---|---|----------|--------|---------|----------|--------|---------|----------|--------|---------|----------|--------|--------|---------|--------|--------|---------|--------|--------|---|--|---|--|--|
| | | | | | | MM | INCH | | | | | | | | | | | | | | | | | | | | |
| | | | | | 4 PLACES | ± .005 | ± .0005 | | | | | | | | | | | | | | | | | | | | |
| | | | | | 3 PLACES | ± .005 | ± .0010 | | | | | | | | | | | | | | | | | | | | |
| 2 PLACES | ± 0.13 | ± .005 | | | | | | | | | | | | | | | | | | | | | | | | | |
| 1 PLACE | ± .025 | ± .001 | | | | | | | | | | | | | | | | | | | | | | | | | |
| 0 PLACE | ± .005 | ± .001 | | | | | | | | | | | | | | | | | | | | | | | | | |
| A | <p>THIS DRAWING CONTAINS INFORMATION THAT IS PROPRIETARY TO MOLEX INCORPORATED AND SHOULD NOT BE USED WITHOUT WRITTEN PERMISSION</p> | | | | | | | | | | | | | | | | | | | | | | | | | | |
| | | | | | | | | | | | | | | | | | | | | | | | | | | | |
| | | | | | | | | | | | | | | | | | | | | | | | | | | | |

| IN TAPE AND REEL WITH SHALLOW POCKET TAPE | | | | | | | | | | | | | BULK / IN TUBES | | |
|---|------|------------|----------------------------|----------------------------|-------|---------------|---------------|--|--|--|--|--|-----------------|---------------|------|
| PACKAGING SEE NOTE 4. SHT 1 | | 4-8 CKT | TAPE-N-REEL W/ VAC CAPS | TAPE-N-REEL W/ VAC CAPS | | | | | | | | | BULK | BULK | |
| | | 10-100 CKT | TAPE-N-REEL W/ VAC CAPS | TAPE-N-REEL W/ VAC CAPS | | | | | | | | | TUBES | TUBES | |
| DIM. M±0.25 MM | | | 6.10 (.240) | 6.10 (.240) | | | | | | | | | 8.13 (.320) | 13.59 (.535) | |
| PLATING | | | 30 GOLD | 15 GOLD | | | | | | | | | 150 TIN | 150 TIN | |
| DIM. H | | | 2.54 (.100) | 2.54 (.100) | | | | | | | | | 4.57 (.180) | 4.57 (.180) | |
| I | CKTS | DIM. A | | DIM. B | | EDP NUMBER | EDP NUMBER | | | | | | EDP NUMBER | EDP NUMBER | CKTS |
| | | MM | IN | MM | IN | | | | | | | | | | |
| | 04 | 5.08 | .200 | 2.54 | .100 | | | | | | | | | | 04 |
| | 06 | 7.62 | .300 | 5.08 | .200 | | 015-91-6068 | | | | | | | | 06 |
| | 08 | 10.16 | .400 | 7.62 | .300 | | 015-91-6088 | | | | | | | | 08 |
| | 10 | 12.70 | .500 | 10.16 | .400 | | 015-91-6108 | | | | | | 713088010 | 71308-8210 | 10 |
| | 12 | 15.24 | .600 | 12.70 | .500 | | | | | | | | | | 12 |
| | 14 | 17.78 | .700 | 15.24 | .600 | 015-91-6148 | | | | | | | | | 14 |
| | 16 | 20.32 | .800 | 17.78 | .700 | | | | | | | | 713088016 | | 16 |
| | 18 | 22.86 | .900 | 20.32 | .800 | | | | | | | | | | 18 |
| | 20 | 25.40 | 1.000 | 22.86 | .900 | | | | | | | | | | 20 |
| | 22 | 27.94 | 1.100 | 25.40 | 1.000 | | | | | | | | | | 22 |
| | 24 | 30.48 | 1.200 | 27.94 | 1.100 | | | | | | | | | | 24 |
| | 26 | 33.02 | 1.300 | 30.48 | 1.200 | | | | | | | | | | 26 |
| | 28 | 35.56 | 1.400 | 33.02 | 1.300 | | | | | | | | | | 28 |
| | 30 | 38.10 | 1.500 | 35.56 | 1.400 | | | | | | | | | | 30 |
| | 32 | 40.64 | 1.600 | 38.10 | 1.500 | | | | | | | | | | 32 |
| | 34 | 43.18 | 1.700 | 40.64 | 1.600 | | | | | | | | | | 34 |
| | 36 | 45.72 | 1.800 | 43.18 | 1.700 | | | | | | | | | | 36 |
| | 38 | 48.26 | 1.900 | 45.72 | 1.800 | | | | | | | | | | 38 |
| | 40 | 50.80 | 2.000 | 48.26 | 1.900 | | | | | | | | | | 40 |
| | 42 | 53.34 | 2.100 | 50.80 | 2.000 | | | | | | | | | | 42 |
| | 44 | 55.88 | 2.200 | 53.34 | 2.100 | | | | | | | | | | 44 |
| | 46 | 58.42 | 2.300 | 55.88 | 2.200 | | | | | | | | | | 46 |
| | 48 | 60.96 | 2.400 | 58.42 | 2.300 | | | | | | | | | | 48 |
| | 50 | 63.50 | 2.500 | 60.96 | 2.400 | | | | | | | | | | 50 |
| | 52 | 66.04 | 2.600 | 63.50 | 2.500 | | | | | | | | | | 52 |
| | 54 | 68.58 | 2.700 | 66.04 | 2.600 | | | | | | | | | | 54 |
| | 56 | 71.12 | 2.800 | 68.58 | 2.700 | | | | | | | | | | 56 |
| | 58 | 73.66 | 2.900 | 71.12 | 2.800 | | | | | | | | | | 58 |
| | 60 | 76.20 | 3.000 | 73.66 | 2.900 | | | | | | | | | | 60 |
| | 62 | 78.74 | 3.100 | 76.20 | 3.000 | | | | | | | | | | 62 |
| | 64 | 81.28 | 3.200 | 78.74 | 3.100 | | | | | | | | | | 64 |
| | 66 | 83.82 | 3.300 | 81.28 | 3.200 | | | | | | | | | | 66 |
| | 68 | 86.36 | 3.400 | 83.82 | 3.300 | | | | | | | | | | 68 |
| | 70 | 88.90 | 3.500 | 86.36 | 3.400 | | | | | | | | | | 70 |
| | 72 | 91.44 | 3.600 | 88.90 | 3.500 | | | | | | | | | | 72 |
| | 74 | 93.98 | 3.700 | 91.44 | 3.600 | | | | | | | | | | 74 |
| | 76 | 96.52 | 3.800 | 93.98 | 3.700 | | | | | | | | | | 76 |
| | 78 | 99.06 | 3.900 | 96.52 | 3.800 | | | | | | | | | | 78 |
| | 80 | 101.60 | 4.000 | 99.06 | 3.900 | | | | | | | | | | 80 |
| | 82 | 104.14 | 4.100 | 101.60 | 4.000 | | | | | | | | | | 82 |
| | 84 | 106.68 | 4.200 | 104.14 | 4.100 | | | | | | | | | | 84 |
| | 86 | 109.22 | 4.300 | 106.68 | 4.200 | | | | | | | | | | 86 |
| | 88 | 111.76 | 4.400 | 109.22 | 4.300 | | | | | | | | | | 88 |
| | 90 | 114.30 | 4.500 | 111.76 | 4.400 | | | | | | | | | | 90 |
| | 92 | 116.84 | 4.600 | 114.30 | 4.500 | | | | | | | | | | 92 |
| | 94 | 119.38 | 4.700 | 116.84 | 4.600 | | | | | | | | | | 94 |
| | 96 | 121.92 | 4.800 | 119.38 | 4.700 | | | | | | | | | | 96 |
| | 98 | 124.46 | 4.900 | 121.92 | 4.800 | | | | | | | | | | 98 |
| | 100 | 127.00 | 5.000 | 124.46 | 4.900 | | | | | | | | | | 100 |

NO PEG VERSION

(ALSO SEE SHEET 2)

| | | | | | | | | | | | | |
|--|--|--------------------|--------------------------------------|--|--------------------------|---------------|----------------------|------------------------|---|-----------------|--------------------|---|
| SEE SHEET 1 EC NO: UCP2014-0809 DRW:MKTPPER CHKD:JBELL APPR:FSMLTH | 2013/08/20 2013/08/20 2013/09/03 | DESCRIPTION REV | QUALITY SYMBOLS ▽=0 ▽=0 ▽=0 | GENERAL TOLERANCES (UNLESS SPECIFIED) | DIMENSION STYLE MM/IN | SCALE INCH | DESIGN UNITS INCH | THIRD ANGLE PROJECTION | TITLE SALES ASSY INSULATOR DUAL ROW SMT W/BREAK-OFF .025SQ PIN GULLWING .100 | DRAWN BY KMS | DATE 1999/10/15 | molex DOCUMENT NO. SD-71308-001 SHEET NO. 3 OF 6 |
| | | | 4 PLACES ± --- ± --- | CHECKED BY KMS | DATE 1999/10/15 | | | | | | | |
| | | | 3 PLACES ± --- ±.005 | APPROVED BY KMS | DATE 1999/10/15 | | | | | | | |
| | | | 2 PLACES ±0.13 ±.010 | MATERIAL NO. SEE TABLE | SIZE C | | | | | | | |
| | | | | 1 PLACE ±0.25 ± --- | | | | | | | | |
| | | | | 0 PLACE ± --- ± --- | | | | | | | | |
| | | | | ANGULAR ±1/2° | | | | | | | | |
| | | | | DRAFT WHERE APPLICABLE MUST REMAIN WITHIN DIMENSIONS | | | | | | | | |

| | | | | | | | | | | | | | | |
|--------|-------------------------------|-------------|----------------|-------------|----------------------------|-------------|----------------------------|-------------|----------------------------|-------------|-------------|-------------|-------------|--|
| | 13 | 12 | 11 | 10 | 9 | 8 | 7 | 6 | 5 | 4 | 3 | 2 | 1 | |
| J | PACKAGING SEE NOTE 4 SHT 1 | | 4-8 CKT | BULK | TAPE-N-REEL W/ VAC CAPS | BULK | TAPE-N-REEL W/ VAC CAPS | BULK | TAPE-N-REEL W/ VAC CAPS | BULK | BULK | BULK | | |
| | | | 10-100 CKT | TUBES | TAPE-N-REEL W/ VAC CAPS | TUBES | TAPE-N-REEL W/ VAC CAPS | TUBES | TAPE-N-REEL W/ VAC CAPS | TUBES | TUBES | TUBES | | |
| | | | DIM. M±0.25 MM | | 6.10 (.240) | | 6.10 (.240) | | 6.10 (.240) | | 8.13 (.320) | 8.13 (.320) | 8.13 (.320) | |
| | | | PLATING | | 150 TIN | | 15 GOLD | | 30 GOLD | | 150 TIN | 15 GOLD | 30 GOLD | |
| DIM. H | | 2.54 (.100) | | 2.54 (.100) | | 2.54 (.100) | | 4.57 (.180) | 4.57 (.180) | 4.57 (.180) | | | | |

| I | CKTS | DIM. A | | DIM. B | | DIM. C | | EDP NUMBER | EDP NUMBER | EDP NUMBER | EDP NUMBER | EDP NUMBER | EDP NUMBER | EDP NUMBER | EDP NUMBER | EDP NUMBER | CKTS |
|---|------|--------|-------|--------|-------|--------|-------|-------------|-------------|-------------|-------------|-------------|-------------|-------------|-------------|-------------|------|
| | | MM | IN | MM | IN | MM | IN | | | | | | | | | | |
| | 04 | 5.08 | .200 | 2.54 | .100 | ---- | ---- | 015-91-1041 | 015-91-6044 | 015-91-1042 | 015-91-6045 | 015-91-1043 | 015-91-6046 | 015-91-1044 | 015-91-0047 | 015-91-1040 | 04 |
| | 06 | 7.62 | .300 | 5.08 | .200 | 2.54 | .100 | 015-91-1061 | 015-91-6064 | 015-91-1062 | 015-91-6065 | 015-91-1063 | 015-91-6066 | 015-91-1064 | 015-91-0067 | 015-91-1060 | 06 |
| | 08 | 10.16 | .400 | 7.62 | .300 | 5.08 | .200 | 015-91-1081 | 015-91-6084 | 015-91-1082 | 015-91-6085 | 015-91-1083 | 015-91-6086 | 015-91-1084 | 015-91-0087 | 015-91-1080 | 08 |
| | 10 | 12.70 | .500 | 10.16 | .400 | 7.62 | .300 | 015-91-1101 | 015-91-6104 | 015-91-1102 | 015-91-6105 | 015-91-1103 | 015-91-6106 | 015-91-1104 | 015-91-0107 | 015-91-1100 | 10 |
| | 12 | 15.24 | .600 | 12.70 | .500 | 10.16 | .400 | 015-91-1121 | | 015-91-1122 | | 015-91-1123 | | 015-91-1124 | 015-91-0127 | 015-91-1120 | 12 |
| | 14 | 17.78 | .700 | 15.24 | .600 | 12.70 | .500 | 015-91-1141 | 015-91-6144 | 015-91-1142 | 015-91-6145 | 015-91-1143 | 015-91-6146 | 015-91-1144 | 015-91-0147 | 015-91-1140 | 14 |
| | 16 | 20.32 | .800 | 17.78 | .700 | 15.24 | .600 | 015-91-1161 | 015-91-6164 | 015-91-1162 | 015-91-6165 | 015-91-1163 | 015-91-6166 | 015-91-1164 | 015-91-0167 | 015-91-1160 | 16 |
| | 18 | 22.86 | .900 | 20.32 | .800 | 17.78 | .700 | 015-91-1181 | | 015-91-1182 | | 015-91-1183 | | 015-91-1184 | 015-91-0187 | 015-91-1180 | 18 |
| | 20 | 25.40 | 1.000 | 22.86 | .900 | 20.32 | .800 | 015-91-1201 | | 015-91-1202 | | 015-91-1203 | | 015-91-1204 | 015-91-0207 | 015-91-1200 | 20 |
| | 22 | 27.94 | 1.100 | 25.40 | 1.000 | 22.86 | .900 | 015-91-1221 | | 015-91-1222 | | 015-91-1223 | | 015-91-1224 | 015-91-0227 | 015-91-1220 | 22 |
| | 24 | 30.48 | 1.200 | 27.94 | 1.100 | 25.40 | 1.000 | 015-91-1241 | 71308-6901 | 015-91-1242 | | 015-91-1243 | | 015-91-1244 | 015-91-0247 | 015-91-1240 | 24 |
| | 26 | 33.02 | 1.300 | 30.48 | 1.200 | 27.94 | 1.100 | 015-91-1261 | | 015-91-1262 | | 015-91-1263 | | 015-91-1264 | 015-91-0267 | 015-91-1260 | 26 |
| | 28 | 35.56 | 1.400 | 33.02 | 1.300 | 30.48 | 1.200 | 015-91-1281 | | 015-91-1282 | | 015-91-1283 | | 015-91-1284 | 015-91-0287 | 015-91-1280 | 28 |
| | 30 | 38.10 | 1.500 | 35.56 | 1.400 | 33.02 | 1.300 | 015-91-1301 | | 015-91-1302 | | 015-91-1303 | | 015-91-1304 | 015-91-0307 | 015-91-1300 | 30 |
| | 32 | 40.64 | 1.600 | 38.10 | 1.500 | 35.56 | 1.400 | 015-91-1321 | | 015-91-1322 | | 015-91-1323 | | 015-91-1324 | 015-91-0327 | 015-91-1320 | 32 |
| | 34 | 43.18 | 1.700 | 40.64 | 1.600 | 38.10 | 1.500 | 015-91-1341 | | 015-91-1342 | | 015-91-1343 | | 015-91-1344 | 015-91-0347 | 015-91-1340 | 34 |
| | 36 | 45.72 | 1.800 | 43.18 | 1.700 | 40.64 | 1.600 | 015-91-1361 | | 015-91-1362 | | 015-91-1363 | | 015-91-1364 | 015-91-0367 | 015-91-1360 | 36 |
| | 38 | 48.26 | 1.900 | 45.72 | 1.800 | 43.18 | 1.700 | 015-91-1381 | | 015-91-1382 | | 015-91-1383 | | 015-91-1384 | 015-91-0387 | 015-91-1380 | 38 |
| | 40 | 50.80 | 2.000 | 48.26 | 1.900 | 45.72 | 1.800 | 015-91-1401 | | 015-91-1402 | | 015-91-1403 | | 015-91-1404 | 015-91-0407 | 015-91-1400 | 40 |
| | 42 | 53.34 | 2.100 | 50.80 | 2.000 | 48.26 | 1.900 | 015-91-1421 | | 015-91-1422 | | 015-91-1423 | | 015-91-1424 | 015-91-0427 | 015-91-1420 | 42 |
| | 44 | 55.88 | 2.200 | 53.34 | 2.100 | 50.80 | 2.000 | 015-91-1441 | | 015-91-1442 | | 015-91-1443 | | 015-91-1444 | 015-91-0447 | 015-91-1440 | 44 |
| | 46 | 58.42 | 2.300 | 55.88 | 2.200 | 53.34 | 2.100 | 015-91-1461 | | 015-91-1462 | | 015-91-1463 | | 015-91-1464 | 015-91-0467 | 015-91-1460 | 46 |
| | 48 | 60.96 | 2.400 | 58.42 | 2.300 | 55.88 | 2.200 | 015-91-1481 | | 015-91-1482 | | 015-91-1483 | | 015-91-1484 | 015-91-0487 | 015-91-1480 | 48 |
| | 50 | 63.50 | 2.500 | 60.96 | 2.400 | 58.42 | 2.300 | 015-91-1501 | 015-91-6504 | 015-91-1502 | 015-91-6505 | 015-91-1503 | 015-91-6506 | 015-91-1504 | 015-91-0507 | 015-91-1500 | 50 |
| | 52 | 66.04 | 2.600 | 63.50 | 2.500 | 60.96 | 2.400 | 015-91-1521 | | 015-91-1522 | | 015-91-1523 | 71308-5203 | 015-91-1524 | 015-91-0527 | 015-91-1520 | 52 |
| | 54 | 68.58 | 2.700 | 66.04 | 2.600 | 63.50 | 2.500 | 015-91-1541 | | 015-91-1542 | | 015-91-1543 | | 015-91-1544 | 015-91-0547 | 015-91-1540 | 54 |
| | 56 | 71.12 | 2.800 | 68.58 | 2.700 | 66.04 | 2.600 | 015-91-1561 | | 015-91-1562 | | 015-91-1563 | | 015-91-1564 | 015-91-0567 | 015-91-1560 | 56 |
| | 58 | 73.66 | 2.900 | 71.12 | 2.800 | 68.58 | 2.700 | 015-91-1581 | | 015-91-1582 | | 015-91-1583 | | 015-91-1584 | 015-91-0587 | 015-91-1580 | 58 |
| | 60 | 76.20 | 3.000 | 73.66 | 2.900 | 71.12 | 2.800 | 015-91-1601 | | 015-91-1602 | | 015-91-1603 | | 015-91-1604 | 015-91-0607 | 015-91-1600 | 60 |
| | 62 | 78.74 | 3.100 | 76.20 | 3.000 | 73.66 | 2.900 | 015-91-1621 | | 015-91-1622 | | 015-91-1623 | | 015-91-1624 | 015-91-0627 | 015-91-1620 | 62 |
| | 64 | 81.28 | 3.200 | 78.74 | 3.100 | 76.20 | 3.000 | 015-91-1641 | | 015-91-1642 | | 015-91-1643 | | 015-91-1644 | 015-91-0647 | 015-91-1640 | 64 |
| | 66 | 83.82 | 3.300 | 81.28 | 3.200 | 78.74 | 3.100 | 015-91-1661 | | 015-91-1662 | | 015-91-1663 | | 015-91-1664 | 015-91-0667 | 015-91-1660 | 66 |
| | 68 | 86.36 | 3.400 | 83.82 | 3.300 | 81.28 | 3.200 | 015-91-1681 | | 015-91-1682 | | 015-91-1683 | | 015-91-1684 | 015-91-0687 | 015-91-1680 | 68 |
| | 70 | 88.90 | 3.500 | 86.36 | 3.400 | 83.82 | 3.300 | 015-91-1701 | | 015-91-1702 | | 015-91-1703 | | 015-91-1704 | 015-91-0707 | 015-91-1700 | 70 |
| | 72 | 91.44 | 3.600 | 88.90 | 3.500 | 86.36 | 3.400 | 015-91-1721 | | 015-91-1722 | | 015-91-1723 | | 015-91-1724 | 015-91-0727 | 015-91-1720 | 72 |
| | 74 | 93.98 | 3.700 | 91.44 | 3.600 | 88.90 | 3.500 | 015-91-1741 | | 015-91-1742 | | 015-91-1743 | | 015-91-1744 | 015-91-0747 | 015-91-1740 | 74 |
| | 76 | 96.52 | 3.800 | 93.98 | 3.700 | 91.44 | 3.600 | 015-91-1761 | | 015-91-1762 | | 015-91-1763 | | 015-91-1764 | 015-91-0767 | 015-91-1760 | 76 |
| | 78 | 99.06 | 3.900 | 96.52 | 3.800 | 93.98 | 3.700 | 015-91-1781 | | 015-91-1782 | | 015-91-1783 | | 015-91-1784 | 015-91-0787 | 015-91-1780 | 78 |
| | 80 | 101.60 | 4.000 | 99.06 | 3.900 | 96.52 | 3.800 | 015-91-1801 | | 015-91-1802 | | 015-91-1803 | | 015-91-1804 | 015-91-0807 | 015-91-1800 | 80 |
| | 82 | 104.14 | 4.100 | 101.60 | 4.000 | 99.06 | 3.900 | 71308-4082 | | 71308-4182 | | 71308-4282 | | 71308-5082 | 71308-5182 | 71308-5282 | 82 |
| | 84 | 106.68 | 4.200 | 104.14 | 4.100 | 101.60 | 4.000 | 71308-4084 | | 71308-4184 | | 71308-4284 | | 71308-5084 | 71308-5184 | 71308-5284 | 84 |
| | 86 | 109.22 | 4.300 | 106.68 | 4.200 | 104.14 | 4.100 | 71308-4086 | | 71308-4186 | | 71308-4286 | | 71308-5086 | 71308-5186 | 71308-5286 | 86 |
| | 88 | 111.76 | 4.400 | 109.22 | 4.300 | 106.68 | 4.200 | 71308-4088 | | 71308-4188 | | 71308-4288 | | 71308-5088 | 71308-5188 | 71308-5288 | 88 |
| | 90 | 114.30 | 4.500 | 111.76 | 4.400 | 109.22 | 4.300 | 71308-4090 | | 71308-4190 | | 71308-4290 | | 71308-5090 | 71308-5190 | 71308-5290 | 90 |
| | 92 | 116.84 | 4.600 | 114.30 | 4.500 | 111.76 | 4.400 | 71308-4092 | | 71308-4192 | | 71308-4292 | | 71308-5092 | 71308-5192 | 71308-5292 | 92 |
| | 94 | 119.38 | 4.700 | 116.84 | 4.600 | 114.30 | 4.500 | 71308-4094 | | 71308-4194 | | 71308-4294 | | 71308-5094 | 71308-5194 | 71308-5294 | 94 |
| | 96 | 121.92 | 4.800 | 119.38 | 4.700 | 116.84 | 4.600 | 71308-4096 | | 71308-4196 | | 71308-4296 | | 71308-5096 | 71308-5196 | 71308-5296 | 96 |
| | 98 | 124.46 | 4.900 | 121.92 | 4.800 | 119.38 | 4.700 | 71308-4098 | | 71308-4198 | | 71308-4298 | | 71308-5098 | 71308-5198 | 71308-5298 | 98 |
| | 100 | 127.00 | 5.000 | 124.46 | 4.900 | 121.92 | 4.800 | 71308-4100 | | 71308-4200 | | 71308-4300 | | 71308-5100 | 71308-5200 | 71308-5300 | 100 |

| | | | | | | | | | | |
|---|---|--|--------------------------|-----------------|---------------------------------------|-----------------|------------|--------------|--|--|
| B | ADD 71308-6901 EC NO: UCP2014-0809 DRWN:KJ/PPR CHKD:JBELL APPR:FSM/TH | 2013/08/20 2013/08/20 2013/09/03 | DESCRIPTION | QUALITY SYMBOLS | GENERAL TOLERANCES (UNLESS SPECIFIED) | DIMENSION STYLE | | SCALE | DESIGN UNITS | THIRD ANGLE PROJECTION |
| | | | | ▽=0 | | mm | MM/IN | INCH | | |
| | | | | ▽=0 | | 4 PLACES ±--- | DRAWN BY | DATE | TITLE | |
| | | | | ▽=0 | | 3 PLACES ±--- | KMS | 1999/10/15 | SALES ASSY INSULATOR DUAL ROW SMT G/BREAK-OFF .025SQ PIN GULLWING .100 | |
| A | K5 | REV | LONG PEG VERSION (.130") | ▽=0 | ±.013 ±.010 | CHECKED BY | DATE | DOCUMENT NO. | SHEET NO. | |
| | | | | ▽=0 | 1 PLACE ±0.25 ±--- | KMS | 1999/10/15 | | | SD-71308-001 |
| | | | | ▽=0 | 0 PLACE ±--- | APPROVED BY | DATE | | | 4 OF 6 |
| | | | | ▽=0 | ANGULAR ±1/2° | KMS | 1999/10/15 | | | THIS DRAWING CONTAINS INFORMATION THAT IS PROPRIETARY TO MOLEX INCORPORATED AND SHOULD NOT BE USED WITHOUT WRITTEN PERMISSION |

| | | | | | | | | | | | | |
|----|----|-------------------------------|----|-------------|-------|----------------------------|-------|----------------------------|---|---|---|---|
| 13 | 12 | 11 | 10 | 9 | 8 | 7 | 6 | 5 | 4 | 3 | 2 | 1 |
| | | PACKAGING SEE NOTE 4 SHT 1 | | 4-8 CKT | BULK | TAPE-N-REEL W/ VAC CAPS | BULK | TAPE-N-REEL W/ VAC CAPS | | | | |
| | | | | 10-100 CKT | TUBES | TAPE-N-REEL W/ VAC CAPS | TUBES | TAPE-N-REEL W/ VAC CAPS | | | | |
| | | DIM. M±0.25 MM | | 6.10 (.240) | | 6.10 (.240) | | | | | | |
| | | PLATING | | 30 GOLD | | 150 TIN | | | | | | |
| | | DIM. H | | 2.54 (.100) | | 2.54 (.100) | | | | | | |

| CKTS | DIM. A | | DIM. B | | DIM. C | | EDP NUMBER | EDP NUMBER | EDP NUMBER | EDP NUMBER | EDP NUMBER | EDP NUMBER | EDP NUMBER | EDP NUMBER | EDP NUMBER | CKTS |
|------|--------|-------|--------|-------|--------|-------|-------------|-------------|------------|------------|------------|------------|------------|------------|------------|------|
| | MM | IN | MM | IN | MM | IN | | | | | | | | | | |
| 04 | 5.08 | .200 | 2.54 | .100 | ---- | ---- | 015-91-1048 | 015-91-6047 | | | | | | | | 04 |
| 06 | 7.62 | .300 | 5.08 | .200 | 2.54 | .100 | 015-91-1068 | 015-91-6067 | 71308-6106 | 71308-6206 | | | | | | 06 |
| 08 | 10.16 | .400 | 7.62 | .300 | 5.08 | .200 | 015-91-1088 | 015-91-6087 | 71308-6108 | 71308-6208 | | | | | | 08 |
| 10 | 12.70 | .500 | 10.16 | .400 | 7.62 | .300 | 015-91-1108 | 015-91-6107 | 71308-6110 | 71308-6210 | | | | | | 10 |
| 12 | 15.24 | .600 | 12.70 | .500 | 10.16 | .400 | 015-91-1128 | | | | | | | | | 12 |
| 14 | 17.78 | .700 | 15.24 | .600 | 12.70 | .500 | 015-91-1148 | 015-91-6147 | | | | | | | | 14 |
| 16 | 20.32 | .800 | 17.78 | .700 | 15.24 | .600 | 015-91-1168 | 015-91-6167 | | | | | | | | 16 |
| 18 | 22.86 | .900 | 20.32 | .800 | 17.78 | .700 | 015-91-1188 | | | | | | | | | 18 |
| 20 | 25.40 | 1.000 | 22.86 | .900 | 20.32 | .800 | 015-91-1208 | 015-91-6207 | | | | | | | | 20 |
| 22 | 27.94 | 1.100 | 25.40 | 1.000 | 22.86 | .900 | 015-91-1228 | | | | | | | | | 22 |
| 24 | 30.48 | 1.200 | 27.94 | 1.100 | 25.40 | 1.000 | 015-91-1248 | | | | | | | | | 24 |
| 26 | 33.02 | 1.300 | 30.48 | 1.200 | 27.94 | 1.100 | 015-91-1268 | | 71308-6126 | | | | | | | 26 |
| 28 | 35.56 | 1.400 | 33.02 | 1.300 | 30.48 | 1.200 | 015-91-1288 | | | | | | | | | 28 |
| 30 | 38.10 | 1.500 | 35.56 | 1.400 | 33.02 | 1.300 | 015-91-1308 | | | | | | | | | 30 |
| 32 | 40.64 | 1.600 | 38.10 | 1.500 | 35.56 | 1.400 | 015-91-1328 | | | | | | | | | 32 |
| 34 | 43.18 | 1.700 | 40.64 | 1.600 | 38.10 | 1.500 | 015-91-1348 | | | | | | | | | 34 |
| 36 | 45.72 | 1.800 | 43.18 | 1.700 | 40.64 | 1.600 | 015-91-1368 | | | | | | | | | 36 |
| 38 | 48.26 | 1.900 | 45.72 | 1.800 | 43.18 | 1.700 | 015-91-1388 | | | | | | | | | 38 |
| 40 | 50.80 | 2.000 | 48.26 | 1.900 | 45.72 | 1.800 | 015-91-1408 | 015-91-6407 | | | | | | | | 40 |
| 42 | 53.34 | 2.100 | 50.80 | 2.000 | 48.26 | 1.900 | 015-91-1428 | | | | | | | | | 42 |
| 44 | 55.88 | 2.200 | 53.34 | 2.100 | 50.80 | 2.000 | 015-91-1448 | | | | | | | | | 44 |
| 46 | 58.42 | 2.300 | 55.88 | 2.200 | 53.34 | 2.100 | 015-91-1468 | | | | | | | | | 46 |
| 48 | 60.96 | 2.400 | 58.42 | 2.300 | 55.88 | 2.200 | 015-91-1488 | | | | | | | | | 48 |
| 50 | 63.50 | 2.500 | 60.96 | 2.400 | 58.42 | 2.300 | 015-91-1508 | 015-91-6507 | | | | | | | | 50 |
| 52 | 66.04 | 2.600 | 63.50 | 2.500 | 60.96 | 2.400 | 015-91-1528 | | | | | | | | | 52 |
| 54 | 68.58 | 2.700 | 66.04 | 2.600 | 63.50 | 2.500 | 015-91-1548 | | | | | | | | | 54 |
| 56 | 71.12 | 2.800 | 68.58 | 2.700 | 66.04 | 2.600 | 015-91-1568 | | | | | | | | | 56 |
| 58 | 73.66 | 2.900 | 71.12 | 2.800 | 68.58 | 2.700 | 015-91-1588 | | | | | | | | | 58 |
| 60 | 76.20 | 3.000 | 73.66 | 2.900 | 71.12 | 2.800 | 015-91-1608 | | | | | | | | | 60 |
| 62 | 78.74 | 3.100 | 76.20 | 3.000 | 73.66 | 2.900 | 015-91-1628 | | | | | | | | | 62 |
| 64 | 81.28 | 3.200 | 78.74 | 3.100 | 76.20 | 3.000 | 015-91-1648 | | | | | | | | | 64 |
| 66 | 83.82 | 3.300 | 81.28 | 3.200 | 78.74 | 3.100 | 015-91-1668 | | | | | | | | | 66 |
| 68 | 86.36 | 3.400 | 83.82 | 3.300 | 81.28 | 3.200 | 015-91-1688 | | | | | | | | | 68 |
| 70 | 88.90 | 3.500 | 86.36 | 3.400 | 83.82 | 3.300 | 015-91-1708 | | | | | | | | | 70 |
| 72 | 91.44 | 3.600 | 88.90 | 3.500 | 86.36 | 3.400 | 015-91-1728 | | | | | | | | | 72 |
| 74 | 93.98 | 3.700 | 91.44 | 3.600 | 88.90 | 3.500 | 015-91-1748 | | | | | | | | | 74 |
| 76 | 96.52 | 3.800 | 93.98 | 3.700 | 91.44 | 3.600 | 015-91-1768 | | | | | | | | | 76 |
| 78 | 99.06 | 3.900 | 96.52 | 3.800 | 93.98 | 3.700 | 015-91-1788 | | | | | | | | | 78 |
| 80 | 101.60 | 4.000 | 99.06 | 3.900 | 96.52 | 3.800 | 015-91-1808 | | | | | | | | | 80 |
| 82 | 104.14 | 4.100 | 101.60 | 4.000 | 99.06 | 3.900 | 71308-6082 | | | | | | | | | 82 |
| 84 | 106.68 | 4.200 | 104.14 | 4.100 | 101.60 | 4.000 | 71308-6084 | | | | | | | | | 84 |
| 86 | 109.22 | 4.300 | 106.68 | 4.200 | 104.14 | 4.100 | 71308-6086 | | | | | | | | | 86 |
| 88 | 111.76 | 4.400 | 109.22 | 4.300 | 106.68 | 4.200 | 71308-6088 | | | | | | | | | 88 |
| 90 | 114.30 | 4.500 | 111.76 | 4.400 | 109.22 | 4.300 | 71308-6090 | | | | | | | | | 90 |
| 92 | 116.84 | 4.600 | 114.30 | 4.500 | 111.76 | 4.400 | 71308-6092 | | | | | | | | | 92 |
| 94 | 119.38 | 4.700 | 116.84 | 4.600 | 114.30 | 4.500 | 71308-6094 | | | | | | | | | 94 |
| 96 | 121.92 | 4.800 | 119.38 | 4.700 | 116.84 | 4.600 | 71308-6096 | | | | | | | | | 96 |
| 98 | 124.46 | 4.900 | 121.92 | 4.800 | 119.38 | 4.700 | 71308-6098 | | | | | | | | | 98 |
| 100 | 127.00 | 5.000 | 124.46 | 4.900 | 121.92 | 4.800 | 71308-6100 | | | | | | | | | 100 |

SHORT PEG VERSION (.055")

| SEE SHEET 1 EC NO: UCP2014-0809 DRWING: KIPPER 2013/08/20 CHKD: J.BELL 2013/08/20 APPR: F.S.MITH 2013/09/03 | QUALITY SYMBOLS ▽=0 ▽=0 ▽=0 | GENERAL TOLERANCES (UNLESS SPECIFIED) | | DIMENSION STYLE MM/IN | | SCALE | DESIGN UNITS INCH | THIRD ANGLE PROJECTION | | | | | | | | | | | | | | | | | | | | | | | |
|---|--------------------------------------|--|------|--------------------------|------|---------------|----------------------|------------------------|-------|----------------|-------|---------------|------|--------------|------|---|--|----------|------|-----|------------|------------|------|-----|------------|-------------|------|-----|------------|---|--|
| | | <table border="1" style="width: 100%; border-collapse: collapse;"> <tr> <th>mm</th> <th>INCH</th> </tr> <tr> <td>4 PLACES ±---</td> <td>±---</td> </tr> <tr> <td>3 PLACES ±---</td> <td>±.005</td> </tr> <tr> <td>2 PLACES ±0.13</td> <td>±.010</td> </tr> <tr> <td>1 PLACE ±0.25</td> <td>±---</td> </tr> <tr> <td>0 PLACE ±---</td> <td>±---</td> </tr> </table> | | mm | INCH | 4 PLACES ±--- | ±--- | 3 PLACES ±--- | ±.005 | 2 PLACES ±0.13 | ±.010 | 1 PLACE ±0.25 | ±--- | 0 PLACE ±--- | ±--- | <table border="1" style="width: 100%; border-collapse: collapse;"> <tr> <th>DRAWN BY</th> <th>DATE</th> </tr> <tr> <td>KMS</td> <td>1999/10/15</td> </tr> <tr> <th>CHECKED BY</th> <th>DATE</th> </tr> <tr> <td>KMS</td> <td>1999/10/15</td> </tr> <tr> <th>APPROVED BY</th> <th>DATE</th> </tr> <tr> <td>KMS</td> <td>1999/10/15</td> </tr> </table> | | DRAWN BY | DATE | KMS | 1999/10/15 | CHECKED BY | DATE | KMS | 1999/10/15 | APPROVED BY | DATE | KMS | 1999/10/15 | SALES ASSY INSULATOR DUAL ROW SMT W/BREAK-OFF .025SQ PIN GULLWING .100 | |
| | | mm | INCH | | | | | | | | | | | | | | | | | | | | | | | | | | | | |
| | | 4 PLACES ±--- | ±--- | | | | | | | | | | | | | | | | | | | | | | | | | | | | |
| 3 PLACES ±--- | ±.005 | | | | | | | | | | | | | | | | | | | | | | | | | | | | | | |
| 2 PLACES ±0.13 | ±.010 | | | | | | | | | | | | | | | | | | | | | | | | | | | | | | |
| 1 PLACE ±0.25 | ±--- | | | | | | | | | | | | | | | | | | | | | | | | | | | | | | |
| 0 PLACE ±--- | ±--- | | | | | | | | | | | | | | | | | | | | | | | | | | | | | | |
| DRAWN BY | DATE | | | | | | | | | | | | | | | | | | | | | | | | | | | | | | |
| KMS | 1999/10/15 | | | | | | | | | | | | | | | | | | | | | | | | | | | | | | |
| CHECKED BY | DATE | | | | | | | | | | | | | | | | | | | | | | | | | | | | | | |
| KMS | 1999/10/15 | | | | | | | | | | | | | | | | | | | | | | | | | | | | | | |
| APPROVED BY | DATE | | | | | | | | | | | | | | | | | | | | | | | | | | | | | | |
| KMS | 1999/10/15 | | | | | | | | | | | | | | | | | | | | | | | | | | | | | | |
| ANGULAR ±1/2° | | MATERIAL NO. | | DOCUMENT NO. | | SHEET NO. | | | | | | | | | | | | | | | | | | | | | | | | | |
| DRAFT WHERE APPLICABLE MUST REMAIN WITHIN DIMENSIONS | | SEE TABLE | | SD-71308-001 | | 5 OF 6 | | | | | | | | | | | | | | | | | | | | | | | | | |
| THIS DRAWING CONTAINS INFORMATION THAT IS PROPRIETARY TO MOLEX INCORPORATED AND SHOULD NOT BE USED WITHOUT WRITTEN PERMISSION | | | | | | | | | | | | | | | | | | | | | | | | | | | | | | | |

| PEG OPTION | | | | | | | | | | | | | | | | | | | | | | | | | | | |
|--------------------------------|--|-----------|--|----------------|---------------------------|----------------------|------------|--------------------------|---------------------------|-------|-------|---------------------------|---------------------------|-------|------|----------------------------|--|--|--|------------|--|--|--|-------------|--|--|--|
| NO PEG VERSION | | | | NO PEG VERSION | | | | LONG PEG VERSION (.130") | | | | SHORT PEG VERSION (.055") | | | | | | | | | | | | | | | |
| PACKAGING SEE NOTE 4, SHT 1 | | 4-6 CKT | | BULK | TAPE-N-REEL W/VAC CAPS | N/A | 4-8 CKT | | TAPE-N-REEL W/VAC CAPS | BULK | BULK | BULK | TAPE-N-REEL W/VAC CAPS | BULK | BULK | TAPE-N-REEL W/VAC CAPS | | | | | | | | | | | |
| | | 8-100 CKT | | TUBES | TAPE-N-REEL W/VAC CAPS | TUBES W/ VAC CAPS | 10-100 CKT | | TAPE-N-REEL W/VAC CAPS | TUBES | TUBES | TUBES | TAPE-N-REEL W/VAC CAPS | TUBES | BULK | TAPE-N-REEL W/ VAC CAPS | | | | | | | | | | | |
| DIM. M±0.25 MM | | | | 6.10 (.240) | | | | 8.13(.320) | | | | 13.59(.535) | | | | 6.10(.240) | | | | 8.13(.320) | | | | 6.10 (.240) | | | |
| PLATING | | | | 59 TIN | | | | 59 TIN | | | | 59 TIN | | | | 59 TIN | | | | 59 TIN | | | | | | | |
| DIM. H | | | | 2.54(.100) | | | | 4.57(.180) | | | | 4.57(.180) | | | | 2.54(.100) | | | | 2.54(.100) | | | | | | | |

| CKTS | DIM. A | | DIM. B | | DIM. C | | EDP NUMBER | EDP NUMBER | EDP NUMBER | EDP NUMBER | EDP NUMBER | EDP NUMBER | EDP NUMBER | EDP NUMBER | EDP NUMBER | EDP NUMBER | CKTS | |
|------|--------|-------|--------|-------|--------|-------|------------|------------|------------|------------|------------|------------|------------|------------|------------|------------|------------|-----|
| | MM | IN | MM | IN | MM | IN | | | | | | | | | | | | |
| 04 | 5.08 | .200 | 2.54 | .100 | --- | --- | 71308-5404 | 71308-5504 | N/A | | | | 71308-6404 | 71308-6504 | 71308-6604 | | 04 | |
| 06 | 7.62 | .300 | 5.08 | .200 | 2.54 | .100 | 71308-5406 | 71308-5506 | N/A | | | | 71308-6406 | 71308-6506 | 71308-6606 | 71308-6706 | 71308-6806 | 06 |
| 08 | 10.16 | .400 | 7.62 | .300 | 5.08 | .200 | 71308-5408 | 71308-5508 | 71308-5608 | | | | 71308-6408 | 71308-6508 | 71308-6608 | 71308-6708 | 71308-6808 | 08 |
| 10 | 12.70 | .500 | 10.16 | .400 | 7.62 | .300 | 71308-5410 | 71308-5510 | 71308-5610 | | 71308-5810 | 71308-5910 | 71308-6410 | 71308-6510 | 71308-6610 | 71308-6710 | 71308-6810 | 10 |
| 12 | 15.24 | .600 | 12.70 | .500 | 10.16 | .400 | 71308-5412 | 71308-5512 | 71308-5612 | | | | 71308-6412 | | 71308-6612 | | | 12 |
| 14 | 17.78 | .700 | 15.24 | .600 | 12.70 | .500 | 71308-5414 | 71308-5514 | 71308-5614 | | | | 71308-6414 | 71308-6514 | 71308-6614 | | | 14 |
| 16 | 20.32 | .800 | 17.78 | .700 | 15.24 | .600 | 71308-5416 | 71308-5516 | 71308-5616 | | 71308-5816 | | 71308-6416 | 71308-6516 | 71308-6616 | | | 16 |
| 18 | 22.86 | .900 | 20.32 | .800 | 17.78 | .700 | 71308-5418 | | 71308-5618 | | | | 71308-6418 | | 71308-6618 | | | 18 |
| 20 | 25.40 | 1.000 | 22.86 | .900 | 20.32 | .800 | 71308-5420 | 71308-5520 | 71308-5620 | | | | 71308-6420 | | 71308-6620 | | | 20 |
| 22 | 27.94 | 1.100 | 25.40 | 1.000 | 22.86 | .900 | 71308-5422 | | 71308-5622 | | | | 71308-6422 | | 71308-6622 | | | 22 |
| 24 | 30.48 | 1.200 | 27.94 | 1.100 | 25.40 | 1.000 | 71308-5424 | | 71308-5624 | | 71308-5724 | 71308-5824 | 71308-6424 | | 71308-6624 | | | 24 |
| 26 | 33.02 | 1.300 | 30.48 | 1.200 | 27.94 | 1.100 | 71308-5426 | | 71308-5626 | | | | 71308-6426 | | 71308-6626 | 71308-6726 | | 26 |
| 28 | 35.56 | 1.400 | 33.02 | 1.300 | 30.48 | 1.200 | 71308-5428 | | 71308-5628 | | | | 71308-6428 | | 71308-6628 | | | 28 |
| 30 | 38.10 | 1.500 | 35.56 | 1.400 | 33.02 | 1.300 | 71308-5430 | | 71308-5630 | | | | 71308-6430 | | 71308-6630 | | | 30 |
| 32 | 40.64 | 1.600 | 38.10 | 1.500 | 35.56 | 1.400 | 71308-5432 | | 71308-5632 | | | | 71308-6432 | | 71308-6632 | | | 32 |
| 34 | 43.18 | 1.700 | 40.64 | 1.600 | 38.10 | 1.500 | 71308-5434 | | 71308-5634 | | | | 71308-6434 | | 71308-6634 | | | 34 |
| 36 | 45.72 | 1.800 | 43.18 | 1.700 | 40.64 | 1.600 | 71308-5436 | | 71308-5636 | | | | 71308-6436 | | 71308-6636 | | | 36 |
| 38 | 48.26 | 1.900 | 45.72 | 1.800 | 43.18 | 1.700 | 71308-5438 | | 71308-5638 | | | | 71308-6438 | | 71308-6638 | | | 38 |
| 40 | 50.80 | 2.000 | 48.26 | 1.900 | 45.72 | 1.800 | 71308-5440 | 71308-5540 | 71308-5640 | | | | 71308-6440 | | 71308-6640 | | | 40 |
| 42 | 53.34 | 2.100 | 50.80 | 2.000 | 48.26 | 1.900 | 71308-5442 | | 71308-5642 | | | | 71308-6442 | | 71308-6642 | | | 42 |
| 44 | 55.88 | 2.200 | 53.34 | 2.100 | 50.80 | 2.000 | 71308-5444 | | 71308-5644 | | | | 71308-6444 | | 71308-6644 | | | 44 |
| 46 | 58.42 | 2.300 | 55.88 | 2.200 | 53.34 | 2.100 | 71308-5446 | | 71308-5646 | | | | 71308-6446 | | 71308-6646 | | | 46 |
| 48 | 60.96 | 2.400 | 58.42 | 2.300 | 55.88 | 2.200 | 71308-5448 | | 71308-5648 | | | | 71308-6448 | | 71308-6648 | | | 48 |
| 50 | 63.50 | 2.500 | 60.96 | 2.400 | 58.42 | 2.300 | 71308-5450 | 71308-5550 | 71308-5650 | | | | 71308-6450 | 71308-6550 | 71308-6650 | | | 50 |
| 52 | 66.04 | 2.600 | 63.50 | 2.500 | 60.96 | 2.400 | 71308-5452 | | 71308-5652 | | | | 71308-6452 | | 71308-6652 | | | 52 |
| 54 | 68.58 | 2.700 | 66.04 | 2.600 | 63.50 | 2.500 | 71308-5454 | | 71308-5654 | | | | 71308-6454 | | 71308-6654 | | | 54 |
| 56 | 71.12 | 2.800 | 68.58 | 2.700 | 66.04 | 2.600 | 71308-5456 | | 71308-5656 | | | | 71308-6456 | | 71308-6656 | | | 56 |
| 58 | 73.66 | 2.900 | 71.12 | 2.800 | 68.58 | 2.700 | 71308-5458 | | 71308-5658 | | | | 71308-6458 | | 71308-6658 | | | 58 |
| 60 | 76.20 | 3.000 | 73.66 | 2.900 | 71.12 | 2.800 | 71308-5460 | | 71308-5660 | | | | 71308-6460 | | 71308-6660 | | | 60 |
| 62 | 78.74 | 3.100 | 76.20 | 3.000 | 73.66 | 2.900 | 71308-5462 | | 71308-5662 | | | | 71308-6462 | | 71308-6662 | | | 62 |
| 64 | 81.28 | 3.200 | 78.74 | 3.100 | 76.20 | 3.000 | 71308-5464 | | 71308-5664 | | | | 71308-6464 | | 71308-6664 | | | 64 |
| 66 | 83.82 | 3.300 | 81.28 | 3.200 | 78.74 | 3.100 | 71308-5466 | | 71308-5666 | | | | 71308-6466 | | 71308-6666 | | | 66 |
| 68 | 86.36 | 3.400 | 83.82 | 3.300 | 81.28 | 3.200 | 71308-5468 | | 71308-5668 | | | | 71308-6468 | | 71308-6668 | | | 68 |
| 70 | 88.90 | 3.500 | 86.36 | 3.400 | 83.82 | 3.300 | 71308-5470 | | 71308-5670 | | | | 71308-6470 | | 71308-6670 | | | 70 |
| 72 | 91.44 | 3.600 | 88.90 | 3.500 | 86.36 | 3.400 | 71308-5472 | | 71308-5672 | | | | 71308-6472 | | 71308-6672 | | | 72 |
| 74 | 93.98 | 3.700 | 91.44 | 3.600 | 88.90 | 3.500 | 71308-5474 | | 71308-5674 | | | | 71308-6474 | | 71308-6674 | | | 74 |
| 76 | 96.52 | 3.800 | 93.98 | 3.700 | 91.44 | 3.600 | 71308-5476 | | 71308-5676 | | | | 71308-6476 | | 71308-6676 | | | 76 |
| 78 | 99.06 | 3.900 | 96.52 | 3.800 | 93.98 | 3.700 | 71308-5478 | | 71308-5678 | | | | 71308-6478 | | 71308-6678 | | | 78 |
| 80 | 101.60 | 4.000 | 99.06 | 3.900 | 96.52 | 3.800 | 71308-5480 | | 71308-5680 | | | | 71308-6480 | | 71308-6680 | | | 80 |
| 82 | 104.14 | 4.100 | 101.60 | 4.000 | 99.06 | 3.900 | 71308-5482 | | 71308-5682 | | | | 71308-6482 | | 71308-6682 | | | 82 |
| 84 | 106.68 | 4.200 | 104.14 | 4.100 | 101.60 | 4.000 | 71308-5484 | | 71308-5684 | | | | 71308-6484 | | 71308-6684 | | | 84 |
| 86 | 109.22 | 4.300 | 106.68 | 4.200 | 104.14 | 4.100 | 71308-5486 | | 71308-5686 | | | | 71308-6486 | | 71308-6686 | | | 86 |
| 88 | 111.76 | 4.400 | 109.22 | 4.300 | 106.68 | 4.200 | 71308-5488 | | 71308-5688 | | | | 71308-6488 | | 71308-6688 | | | 88 |
| 90 | 114.30 | 4.500 | 111.76 | 4.400 | 109.22 | 4.300 | 71308-5490 | | 71308-5690 | | | | 71308-6490 | | 71308-6690 | | | 90 |
| 92 | 116.84 | 4.600 | 114.30 | 4.500 | 111.76 | 4.400 | 71308-5492 | | 71308-5692 | | | | 71308-6492 | | 71308-6692 | | | 92 |
| 94 | 119.38 | 4.700 | 116.84 | 4.600 | 114.30 | 4.500 | 71308-5494 | | 71308-5694 | | | | 71308-6494 | | 71308-6694 | | | 94 |
| 96 | 121.92 | 4.800 | 119.38 | 4.700 | 116.84 | 4.600 | 71308-5496 | | 71308-5696 | | | | 71308-6496 | | 71308-6696 | | | 96 |
| 98 | 124.46 | 4.900 | 121.92 | 4.800 | 119.38 | 4.700 | 71308-5498 | | 71308-5698 | | | | 71308-6498 | | 71308-6698 | | | 98 |
| 100 | 127.00 | 5.000 | 124.46 | 4.900 | 121.92 | 4.800 | 71308-5500 | | 71308-5700 | | | | 71308-6500 | | 71308-6700 | | | 100 |

| | | | | | | | | | | |
|--|--------------------------------------|---------------------------------------|--|-----------------------|------|---|--------------|------------------------|--|---|
| SEE SHEET 1 EC NO: UCP2014-0809 DRW:WKIPPER CHKD: BELL APPR:FSMITH 2013/08/20 2013/08/20 2013/09/03 | QUALITY SYMBOLS ▽=0 ▽=0 ▽=0 | GENERAL TOLERANCES (UNLESS SPECIFIED) | | DIMENSION STYLE | | SCALE | DESIGN UNITS | THIRD ANGLE PROJECTION | | |
| | | mm | | INCH | | MM/IN | | INCH | | SALES ASSY INSULATOR DUAL ROW SMT GULLWING .100 .025SQ PIN GULLWING .100 molex DOCUMENT NO. SD-71308-001 SHEET NO. 6 OF 6 |
| | | 4 PLACES ± --- ± --- | | 3 PLACES ± --- ± .005 | | DRAWN BY | DATE | TITILE | | |
| | | 2 PLACES ± 0.13 ± .010 | | 1 PLACE ± 0.25 ± --- | | CHECKED BY | DATE | | | |
| 0 PLACE ± --- ± --- | | | | APPROVED BY | DATE | | | | | |
| ANGULAR ±1/2° | | MATERIAL NO. | | SEE TABLE | | DOCUMENT NO. | | | | |
| DRAFT WHERE APPLICABLE MUST REMAIN WITHIN DIMENSIONS | | SIZE | | C | | THIS DRAWING CONTAINS INFORMATION THAT IS PROPRIETARY TO MOLEX INCORPORATED AND SHOULD NOT BE USED WITHOUT WRITTEN PERMISSION | | | | |