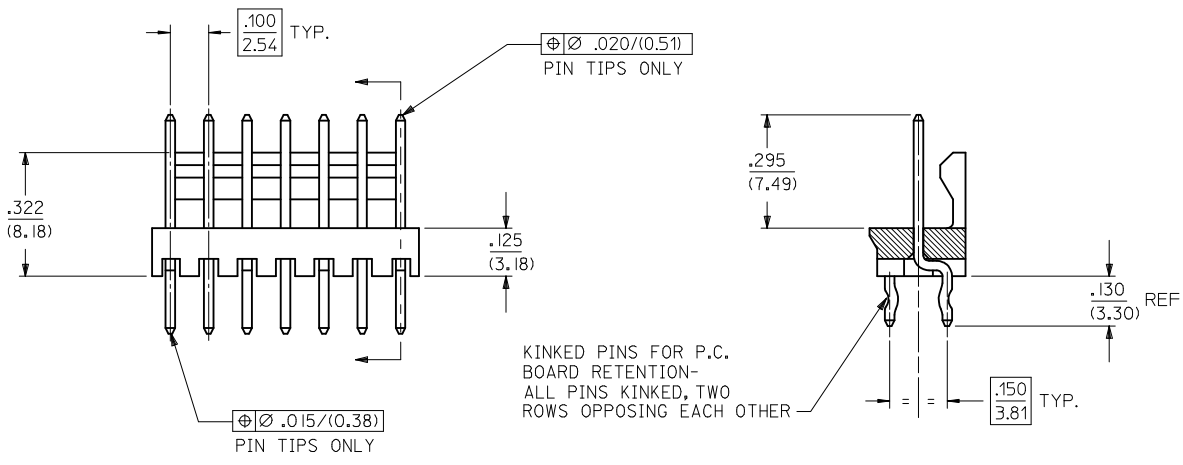
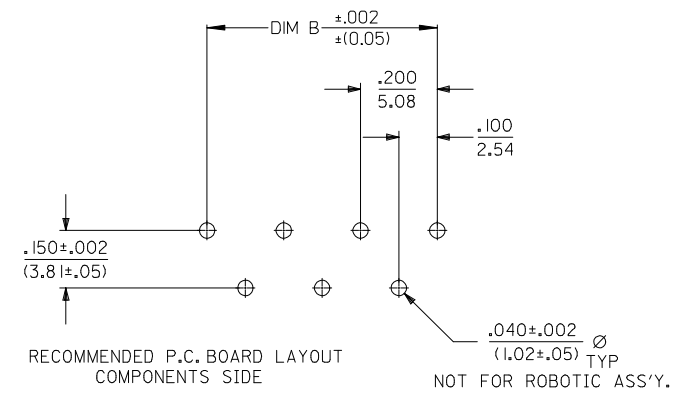
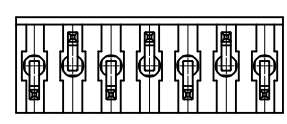


- NOTES
- MATERIAL: WAFER - GLASS FILLED POLYESTER, UL94 V-0, COLOR: NATURAL (WHITE)  
PIN - BRASS
  - FINISH: OVERALL REFLOWED MATTE TIN: .000060/0.00152 MIN. OVER .000050/0.00127 MIN. NICKEL
  - PRODUCT SPECIFICATION: PS-10-07
  - BULK PACK PER PK-43009-001
  - THIS PART CONFORMS TO CLASS B REQUIREMENTS OF COSMETIC SPECIFICATION PS-45499-002.

ENG. NO. DESIGNATION:  
A-42009- N - \*\*  
CKT. SIZE VOID PIN DESIGNATION  
A= #1 PIN  
B= #2 PIN  
C= #3 PIN  
ECT.



10	.995/(25.27)	.900/(22.86)
9	.895/(22.73)	.800/(20.32)
8	.795/(20.19)	.700/(17.78)
7	.695/(17.65)	.600/(15.24)
6	.595/(15.11)	.500/(12.70)
5	.495/(12.57)	.400/(10.16)
4	.395/(10.03)	.300/(7.62)
3	.295/(7.49)	.200/(5.08)
2	.195/(4.95)	.100/(2.54)
CKT SIZE	DIM A	DIM B



2	L
1	P
SHT. REV.	

ADD BASIC DIMS. EC NO: UCP2013-3133 DRWN:KIPPER 2013/01/29 CHKD:JBELL 2013/01/29 APPR:FSMITH 2013/03/13	QUALITY SYMBOLS	GENERAL TOLERANCES (UNLESS SPECIFIED)	DIMENSION STYLE	SCALE	DESIGN UNITS	THIRD ANGLE PROJECTION
	$\nabla = 0$	$\pm$ mm $\pm$ INCH	IN/MM	4:1	INCH	
	$\nabla = 0$	4 PLACES $\pm$ --- $\pm$ ---	DRAWN BY DATE	TITLE		
	$\nabla = 0$	3 PLACES $\pm$ --- $\pm$ .010	CHECKED BY DATE	WAFER, FRICTION LOCK ASSEMBLY		
	2 PLACES $\pm$ 0.25 $\pm$ .014	EDGLEY 1986/11/29				
	1 PLACE $\pm$ 0.36 $\pm$ ---	EDGLEY 1986/11/29				
	0 PLACE $\pm$ $\pm$	APPROVED BY DATE	MATERIAL NO.	DOCUMENT NO.	SHEET NO.	
		EDGLEY 1986/11/29	SEE CHART	SDA-42009-*	1 OF 2	
			DRAFT WHERE APPLICABLE MUST REMAIN WITHIN DIMENSIONS			
			THIS DRAWING CONTAINS INFORMATION THAT IS PROPRIETARY TO MOLEX INCORPORATED AND SHOULD NOT BE USED WITHOUT WRITTEN PERMISSION			

A-42009-N

PART NO.	ENG. NO	VOID CKT.
22-23-3024	A-42009-2	NONE
22-23-3034	A-42009-3	NONE
22-23-3044	A-42009-4	NONE
22-23-3054	A-42009-5	NONE
22-23-3064	A-42009-6	NONE
22-23-3074	A-42009-7	NONE
22-23-3084	A-42009-8	NONE
22-23-3094	A-42009-9	NONE
22-23-3104	A-42009-10	NONE
22-46-4041	A-42009-4-B	2
22-46-4042	A-42009-4-C	3
22-46-4052	A-42009-5-B	2
22-46-4053	A-42009-5-C	3
22-46-4050	A-42009-5-D	4
22-46-4051	A-42009-5-E	5
22-46-4064	A-42009-6-B	2
	A-42009-6-BC	2,3
22-46-4068	A-42009-6-D	4
22-46-4065	A-42009-6-E	5
22-46-4069	A-42009-6-F	6
22-46-4072	A-42009-7-E	5
22-46-4080	A-42009-8-D	4
22-46-4081	A-42009-8-E	5
22-46-4031	A-42009-3-C	3
22-46-4063	A-42009-6-DE	4,5
22-46-4062	A-42009-6-CF	3,6
22-46-4061	A-42009-6-BD	2,4
22-46-4030	A-42009-3-B	2
22-46-4066	A-42009-6-C	3
22-46-4071	A-42009-7-D	4
22-46-4067	A-42009-6-CE	3,5
22-46-4074	A-42009-7-C	3
22-46-4075	A-42009-7-F	6
22-46-4073	A-42009-7-B	2
22-46-4082	A-42009-8-H	8
22-46-4083	A-42009-8-F	6
22-46-4101	A-42009-10-I	9
22-46-4100	A-42009-10-B	2
22-46-4043	A-42009-4-D	4
22-46-4060	A-42009-6-BE	2,5

COLUMN NO.	CON'T. IN COLUMN NO.	SHEET NO.
------------	----------------------	-----------

ENG. NO. DESIGNATION: A-42009-N - \*\*  
 CKT. SIZE      VOID PIN DESIGNATION  
 A = #1 PIN  
 B = #2 PIN  
 C = #3 PIN  
 ECT.

SEE SHEET 1 EC NO: UCP2012-0908 DRWN: MSTROH 2011/10/18 CHKD: HKIPPER 2011/10/18 APPR: FSMITH 2012/01/10	QUALITY SYMBOLS	GENERAL TOLERANCES (UNLESS SPECIFIED)	DIMENSION STYLE <b>IN/MM</b>	SCALE <b>1:1</b>	DESIGN UNITS <b>INCH</b>	THIRD ANGLE PROJECTION
	▽=0	4 PLACES ± --- ± ---	DRAWN BY DATE PEARSON 1997/07/03	TITLE <b>WAFER, FRICTION LOCK ASSEMBLY K-K .100/(2.54)</b>		
	▽=0	3 PLACES ± --- ± ---	CHECKED BY DATE EDGLEY 1997/07/03			
▽=0	2 PLACES ± --- ± ---	APPROVED BY DATE		<b>MOLEX INCORPORATED</b>		
▽=0	1 PLACE ± --- ± ---	ANGULAR ±1/2°				
		DRAFT WHERE APPLICABLE MUST REMAIN WITHIN DIMENSIONS	<b>SEE CHART</b>		<b>SDA-42009-*</b>	<b>2 OF 2</b>
			SIZE	THIS DRAWING CONTAINS INFORMATION THAT IS PROPRIETARY TO MOLEX INCORPORATED AND SHOULD NOT BE USED WITHOUT WRITTEN PERMISSION		