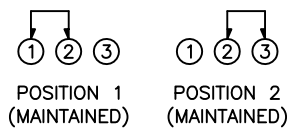


SCHEMATIC



COLORS

BODY:
Metallic
ACTUATOR:
Black

SPECIFICATIONS

FUNCTION:
1P2T ON-ON
Non-Shorting

RATINGS:
11A 125VAC
5.5A 250VAC

CONTACT RESISTANCE:
Initial: 30mΩ Max. at 50VDC

INSULATION RESISTANCE:
500MΩ Min. at 500VDC

DIELECTRIC STRENGTH:
1,000VAC For 1 Minute

MECHANICAL LIFE:
100,000 Cycles

ELECTRICAL LIFE:
10,000 Cycles

TEMPERATURE:
-30° to 105°C

APPROVALS:



MATERIALS

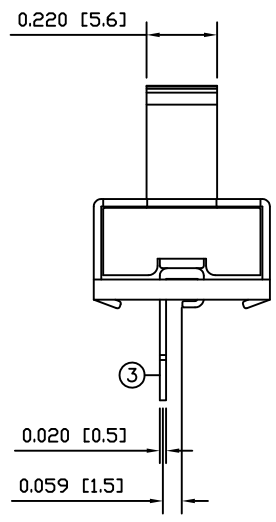
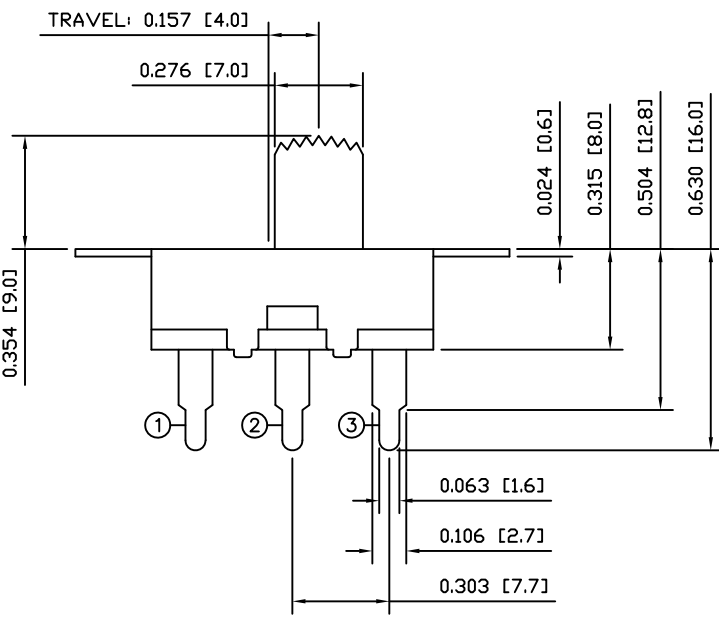
UPPER BODY:
Steel

BASE:
Penolic Board, UL94 V-0

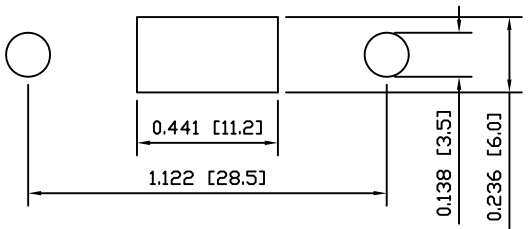
ACTUATOR:
Polyphenylene Oxide

CONTACTS
Silver

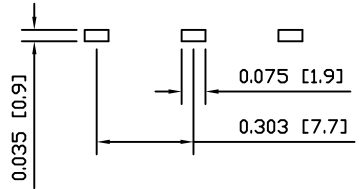
TERMINALS:
Silver Plated Copper



SUGGESTED PANEL CUTOUT



SUGGESTED PCB LAYOUT



UNLESS OTHERWISE SPECIFIED,
DIMENSIONS ARE IN INCHES [MILLIMETERS]
TOLERANCES ARE:

DEC .X±0.2	ANG ± 1°
.XXX±0.008	DRAWING NOT TO SCALE
DRAWN BY: STACEY CHRISTIANSON	

	P.O. Box 25110 Portland, OR 97298	LAST REVISION: OCT. 1, 2008
	DRAWING NUMBER: 03-LSU11-120001A9.dwg	
LSU11-120001A9		