

COLORS

BODY:
Metallic

ACTUATOR:
Black

SPECIFICATIONS

FUNCTION:
2P2T ON-ON
Non-Shorting

RATINGS:
11A 125VAC
5.5A 250VAC

CONTACT RESISTANCE:
Initial: 30mΩ Max. at 50VDC

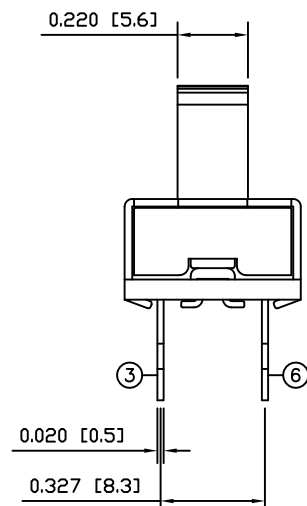
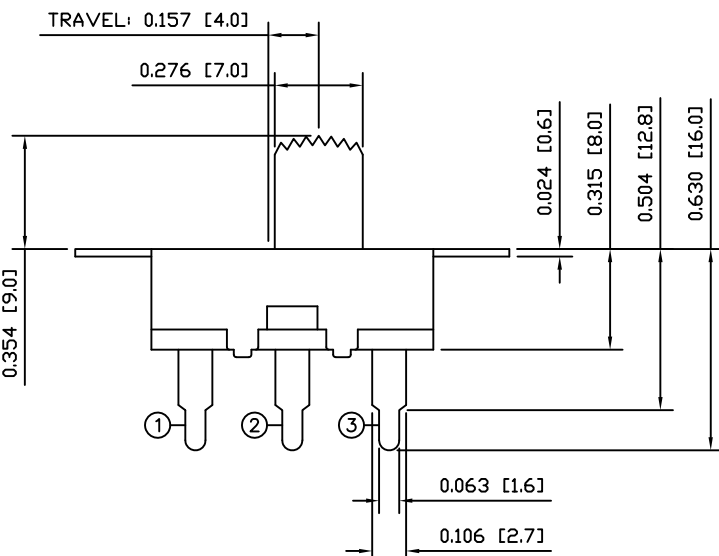
INSULATION RESISTANCE:
500MΩ Min. at 500VDC

DIELECTRIC STRENGTH:
1,000VAC For 1 Minute

MECHANICAL LIFE:
100,000 Cycles

ELECTRICAL LIFE:
10,000 Cycles

TEMPERATURE:
-30° to 105°C



MATERIALS

UPPER BODY:
Steel

BASE:
Penolic Board, UL94 V-0

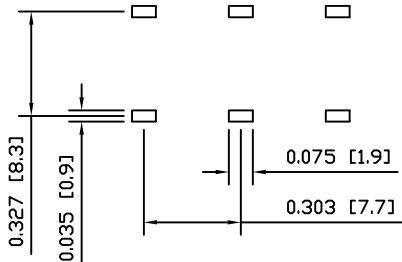
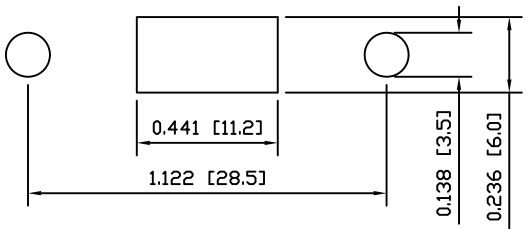
ACTUATOR:
Polyphenylene Oxide

CONTACTS
Silver

TERMINALS:
Silver Plated Copper

SUGGESTED PANEL CUTOUT

SUGGESTED PCB LAYOUT



UNLESS OTHERWISE SPECIFIED, DIMENSIONS ARE IN INCHES [MILLIMETERS] TOLERANCES ARE:		P.O. Box 25110 Portland, OR 97298	LAST REVISION: OCT. 1, 2008
DEC .X±0.2	ANG ± 1°		DRAWING NUMBER: 03-LSU11-220001A9.dwg
.XXX±0.008	DRAWING NOT TO SCALE	LSU11-220001A9	
DRAWN BY: STACEY CHRISTIANSON			