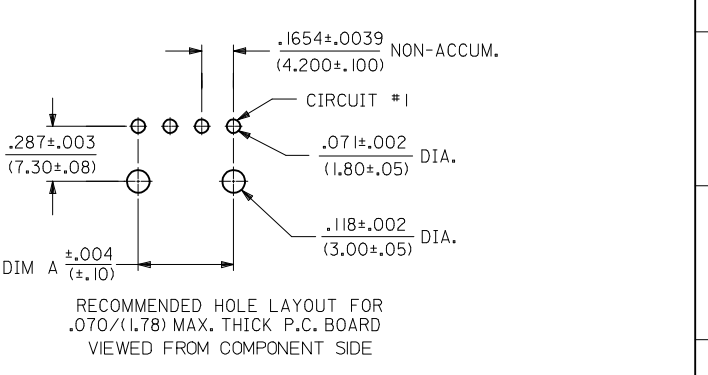
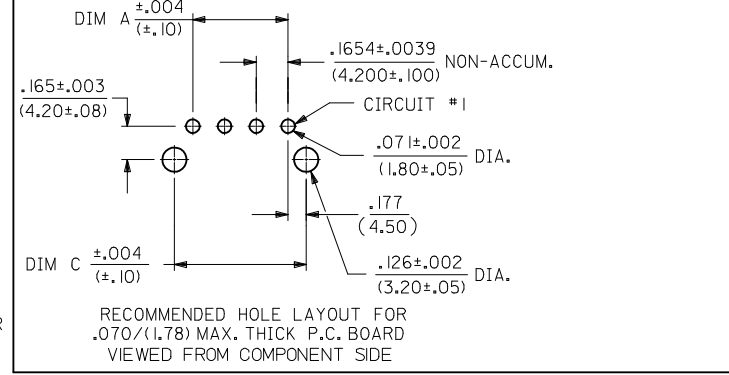
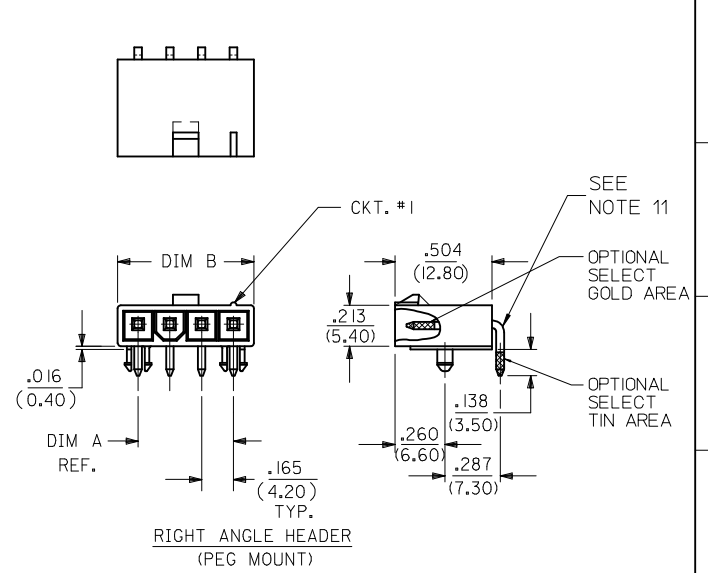
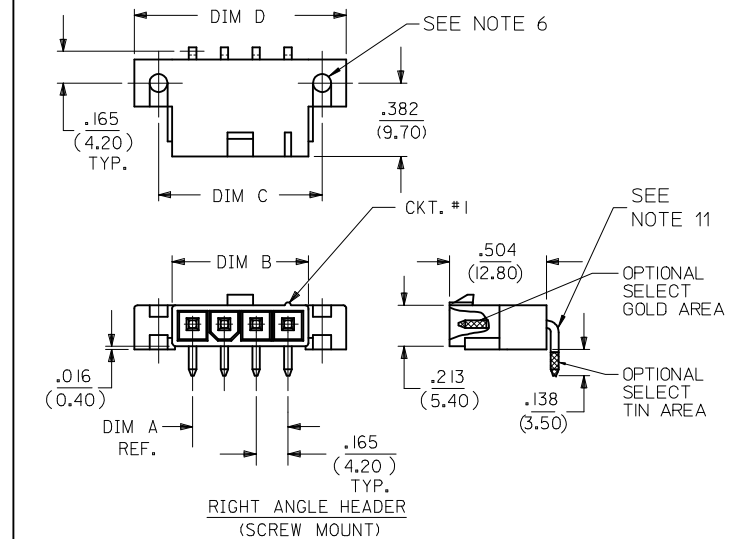


CKT SIZE	DIM A	DIM B	DIM C	DIM D
4	.496 (12.60)	.709 (18.00)	.850 (21.60)	1.102 (28.00)
5	.661 (16.80)	.874 (22.20)	1.016 (25.80)	1.268 (32.20)
6	.827 (21.00)	1.039 (26.40)	1.181 (30.00)	1.433 (36.40)
7	.992 (25.20)	1.205 (30.60)	1.346 (34.20)	1.598 (40.60)
8	1.157 (29.40)	1.370 (34.80)	1.512 (38.40)	1.764 (44.80)
9	1.323 (33.60)	1.535 (39.00)	1.677 (42.60)	1.929 (49.00)
10	1.488 (37.80)	1.701 (43.20)	1.843 (46.80)	2.094 (53.20)
11	1.654 (42.00)	1.866 (47.40)	2.008 (51.00)	2.260 (57.40)
12	1.819 (46.20)	2.031 (51.60)	2.173 (55.20)	2.425 (61.60)



- NOTES:**
- HOUSING MATERIAL:  
 "BLANK" = NYLON 6/6, U.L. 94V-2, COLOR: NATURAL.  
 210 = NYLON 6/6, U.L. 94V-0, COLOR: NATURAL.  
 BL = NYLON 6/6, U.L. 94V-2, COLOR: BLACK.  
 400 = NYLON 6/6, U.L. 94V-0, COLOR: BLACK.  
 TERMINAL MATERIAL: BRASS, ALLOY.
  - TERMINAL PLATING:  
 G, GS - .000030/(.00076) MIN. SELECT GOLD AND .000100/(.00127) MIN. SELECT MATTE TIN OVER .000050/(.00127) MIN. NICKEL OVERALL.  
 G2, GS2 - .00015/(.00038) MIN. SELECT GOLD AND .000100/(.00254) MIN. SELECT MATTE TIN OVER .000050/(.00127) MIN. NICKEL OVERALL.  
 RM - .000060/(.00152) MIN. REFLOWED MATTE TIN OVER .000050/(.00127) MIN. NICKEL OVERALL.
  - BLANK, S, MS - .000100/(.00254) MIN. MATTE TIN OVER .000050/(.00127) MIN. NICKEL OVERALL.
  - PRODUCT SPECIFICATION: PS-5556-001
  - PACKAGING SPECIFICATION : BULK PACK PER PK-5569-002
  - PART MATES WITH MOLEX RECEPTACLE #5557.
  - PART IS DESIGNED FOR USE WITH #4 OR M3 SELF TAPPING SCREWS.
  - DISCOLORATION IN THE BANDOLIER CARRIER AREA OF THE PIN IS INHERENT TO THE PLATING PROCESS AND IS DUE TO THE MASKING EFFECT OF THE CARRIER. THIS DISCOLORATION IS IN A NON-FUNCTIONAL AREA OF THE PIN AND WILL NOT AFFECT THE PERFORMANCE OF THE HEADER ASSEMBLY.
  - CONNECTORS ARE NOT TO BE MATED OR UNMATED WHILE CIRCUIT ARE LIVE.
  - PARTS NOT DESIGNED FOR CURRENT SHARING.
  - PART CONFORMS TO CLASS "B" REQUIREMENTS OF COSMETIC SPECIFICATION PS-45499-002.
  - FORMING MARKS ON PINS ARE ACCEPTABLE

**LEGEND:**

5569 - \*\* A \* \* - \*

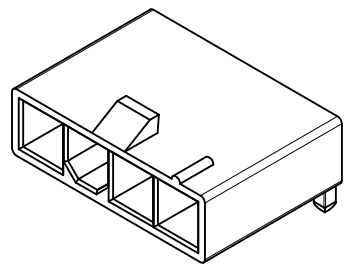
CKT. SIZE (04-12)

ASSEMBLY

MOUNTING & LOCK OPTION:  
 3 = SCREW MOUNT, POSITIVE LOCK  
 4 = PEG MOUNT, POSITIVE LOCK  
 5 = PEG MOUNT, PASSIVE LOCK

PLATING OPTION:  
 (SEE NOTE 2)

MATERIAL OPTION:  
 (SEE NOTE 1)



<b>FIX 50304469</b> ENG NO EC NO: UCP2014-0298 DRWINGUYEN 2013/07/23 CHKD:JBELL 2013/07/23 APPR:FSM/TH 2013/08/16	QUALITY SYMBOLS ▽=0 ▽=0 ▽=0	GENERAL TOLERANCES (UNLESS SPECIFIED)		DIMENSION STYLE <b>IN/MM</b>		SCALE <b>2:1</b>	DESIGN UNITS <b>METRIC</b>	THIRD ANGLE PROJECTION	
		4 PLACES ± --- ± --- 3 PLACES ± --- ± .015 2 PLACES ± .38 ± --- 1 PLACE ± --- ± --- 0 PLACE ± ±		DRAWN BY KSS	DATE 2/14/89	<b>RIGHT ANGLE HEADER ASSY (SINGLE ROW) (MINI-FIT JR. SERIES)</b>			
		ANGULAR ± 3 °		CHECKED BY RJF	DATE 2/14/89	<b>molex</b>			
		DRAFT WHERE APPLICABLE MUST REMAIN WITHIN DIMENSIONS		APPROVED BY RAS	DATE 2/14/89				

UL94V-2						
E.D.P. NO.	ENG. NO.	CKT. SIZE	MOUNTING OPTION	LOCK OPTION	PLATING (SEE NOTE 2)	MAT'L. (SEE NOTE 1)
SCREW MOUNT POSITIVE LOCK						
39-30-3041	5569-04A3MS	4	SCREWS	POSITIVE	TIN/NICKEL	94V-2
39-30-3051	5569-05A3MS	5	SCREWS	POSITIVE	TIN/NICKEL	94V-2
39-30-3043	5569-04A3GS	4	SCREWS	POSITIVE	30 GOLD	94V-2
39-30-3053	5569-05A3GS	5	SCREWS	POSITIVE	30 GOLD	94V-2
PEG MOUNT POSITIVE LOCK						
39-30-3045	5569-04A4	4	PEGS	POSITIVE	TIN/NICKEL	94V-2
39-30-3055	5569-05A4	5	PEGS	POSITIVE	TIN/NICKEL	94V-2
39-30-3047	5569-04A4G	4	PEGS	POSITIVE	30 GOLD	94V-2
39-30-3057	5569-05A4G	5	PEGS	POSITIVE	30 GOLD	94V-2
PEG MOUNT, PASSIVE LOCK						
NO E.D.P.	5569-04A5MS	4	PEGS	PASSIVE	TIN/NICKEL	94V-2
15-24-1501	5569-05A5MS	5	PEGS	PASSIVE	TIN/NICKEL	94V-2
NO E.D.P.	5569-04A5GS2	4	PEGS	PASSIVE	15 GOLD	94V-2
15-27-1501	5569-05A5GS2	5	PEGS	PASSIVE	15 GOLD	94V-2

UL94V-0						
E.D.P. NO.	ENG. NO.	CKT. SIZE	MOUNTING OPTION	LOCK OPTION	PLATING (SEE NOTE 2)	MAT'L. (SEE NOTE 1)
SCREW MOUNT POSITIVE LOCK						
50-30-4469	5569-04A3MS-210	4	SCREW	POSITIVE	TIN/NICKEL	94V-0
NO E.D.P.	5569-05A3MS-210	5	SCREW	POSITIVE	TIN/NICKEL	94V-0
NO E.D.P.	5569-04A3GS-210	4	SCREW	POSITIVE	30 GOLD	94V-0
NO E.D.P.	5569-05A3GS-210	5	SCREW	POSITIVE	30 GOLD	94V-0
PEG MOUNT POSITIVE LOCK						
39-30-3046	5569-04A4MS-210	4	PEGS	POSITIVE	TIN/NICKEL	94V-0
39-30-3056	5569-05A4MS-210	5	PEGS	POSITIVE	TIN/NICKEL	94V-0
39-30-3048	5569-04A4G-210	4	PEGS	POSITIVE	30 GOLD	94V-0
39-30-3058	5569-05A4G-210	5	PEGS	POSITIVE	30 GOLD	94V-0
46999-0432	5569-04A4GS-400	4	PEGS	POSITIVE	30 GOLD	94V-0
50-30-4436	5569-05A4GS-400	5	PEGS	POSITIVE	30 GOLD	94V-0
46999-0288	5569-04A4MS-400	4	PEGS	POSITIVE	TIN/NICKEL	94V-0
46999-0289	5569-05A4MS-400	5	PEGS	POSITIVE	TIN/NICKEL	94V-0

<b>SEE SHEET 1</b> EC NO: UCP2014-0298 DRWINHNGUYEN 2013/07/23 CHKD:JBELL 2013/07/23 APPR:FSM/TH 2013/08/16	QUALITY SYMBOLS 	GENERAL TOLERANCES (UNLESS SPECIFIED)		DIMENSION STYLE <b>IN/MM</b>		SCALE	DESIGN UNITS <b>METRIC</b>	THIRD ANGLE PROJECTION		
		4 PLACES ± .15	± .15	DRAWN BY KSS	DATE 2/14/89	TITLE <b>RIGHT ANGLE HEADER ASSY (SINGLE ROW) (MINI-FIT JR. SERIES)</b>				
		3 PLACES ± .15	± .15	CHECKED BY RJF	DATE 2/14/89					
		2 PLACES ± .38	± .38	APPROVED BY RAS	DATE 2/14/89					
1 PLACE ± .38	± .38	ANGULAR ± 3°		MATERIAL NO.		DOCUMENT NO.		SHEET NO.		
0 PLACE ± .38	± .38	DRAFT WHERE APPLICABLE MUST REMAIN WITHIN DIMENSIONS		SEE CHART		SDA-5569-NL*		2 OF 2		
THIS DRAWING CONTAINS INFORMATION THAT IS PROPRIETARY TO MOLEX INCORPORATED AND SHOULD NOT BE USED WITHOUT WRITTEN PERMISSION										