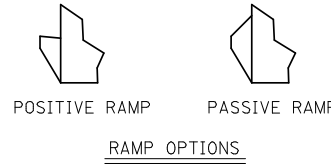
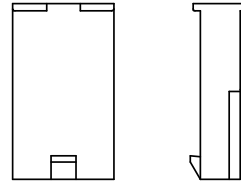
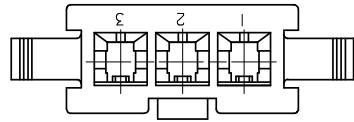
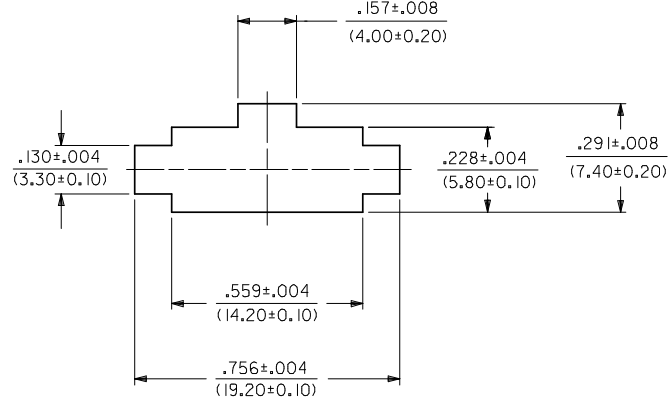
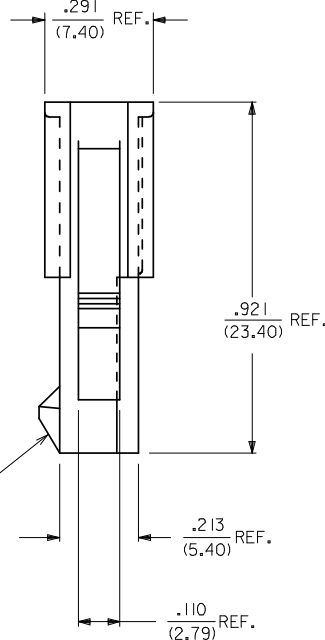
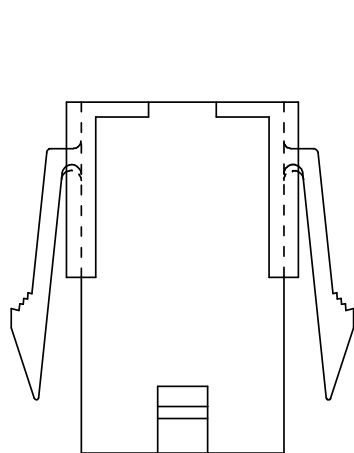


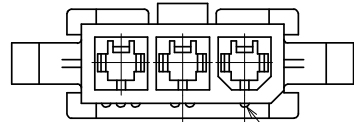
PART NO.	ENG. NO.	CKT. NO.	MOUNT OPTION	MAT'L.	RAMP OPTION
50-29-1663	5559-03P3-225	3	3	225	POSITIVE
50-36-1893	5559-03P2-225	3	2	225	POSITIVE



5559-03P3-***
WITHOUT MOUNTING EARS

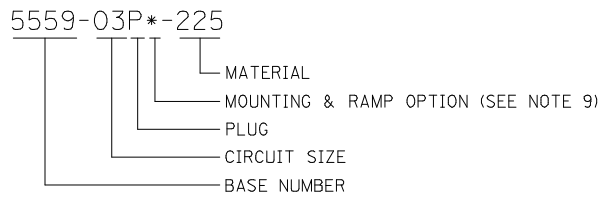


RECOMMENDED PANEL CUT-OUT
(SEE NOTES 7 & 8)



.165 (4.20) TYP. RIB INDICATES CIRCUIT #1

LEGEND



- NOTES:
- MATERIAL:
225 = NYLON 6, UL94V-0, IEC 60335-1, 4TH EDITION GLOW WIRE CAPABLE, COLOR: BLACK.
 - FINISH: NOT APPLICABLE
 - PRODUCT SPECIFICATION: PS-5556-001
 - PACKAGING: BULK
 - THIS PART MATES WITH MOLEX RECEPTACLE #5557-03R2-225.
 - THIS PART IS FOR USE WITH MOLEX MALE TERMINAL NO. 5558-*
 - PANEL MOUNT VERSION IS FOR USE WITH .031/.079 (0.80/2.00) THICK PANELS.
 - PANEL SHOULD BE PUNCHED IN THE DIRECTION OF CONNECTOR INSERTION.
 - MOUNTING & RAMP OPTION: 2 = WITH EARS, WITH POSITIVE RAMP
3 = WITHOUT EARS, WITH POSITIVE RAMP
4 = WITH EARS, WITH PASSIVE RAMP
5 = WITHOUT EARS, WITH PASSIVE RAMP
 - PART IS DESIGNED IN METRIC.
 - CONNECTORS ARE NOT TO BE MATED OR UNMATED WHILE CIRCUITS ARE LIVE.
 - WIRES ARE TO BE DRESSED IN SUCH A MANNER TO ALLOW THE TERMINALS TO FLOAT FREELY IN THE POCKET.
 - PART CONFORMS TO CLASS 'B' REQUIREMENTS OF COSMETIC SPECIFICATION PS-45499-002 WITH THE EXCEPTION OF DISCOLORATION. FLASH AND SINK MEET CLASS 'C' REQUIREMENTS.

INITIAL RELEASE EC NO: UCP2008-2968 DRWN:SSOUSEK 2008/07/24 CHKD:SSOUSEK 2008/07/24 APPR:FSM1TH 2008/07/24	QUALITY SYMBOLS ▽=0 ▽=0	GENERAL TOLERANCES (UNLESS SPECIFIED)		DIMENSION STYLE IN/MM		SCALE 4:1	DESIGN UNITS METRIC	THIRD ANGLE PROJECTION	
		mm	INCH	DRAWN BY GAVERILL	DATE 2008/07/23	TITLE MINI-FIT JR. SERIES, 3 CKT. PLUG			
A	REV	4 PLACES	±---	±---	CHECKED BY SSOUSEK	DATE 2008/07/23	MATERIAL NO. SD-5559-225		
		3 PLACES	±---	±.010	APPROVED BY FSM1TH	DATE 2008/07/23			
		2 PLACES	±0.25	±.015	SHEET NO. 1 OF 1				
		1 PLACE	±0.38	±---	THIS DRAWING CONTAINS INFORMATION THAT IS PROPRIETARY TO MOLEX INCORPORATED AND SHOULD NOT BE USED WITHOUT WRITTEN PERMISSION				
		ANGULAR ±1/2°		DRAFT WHERE APPLICABLE MUST REMAIN WITHIN DIMENSIONS					