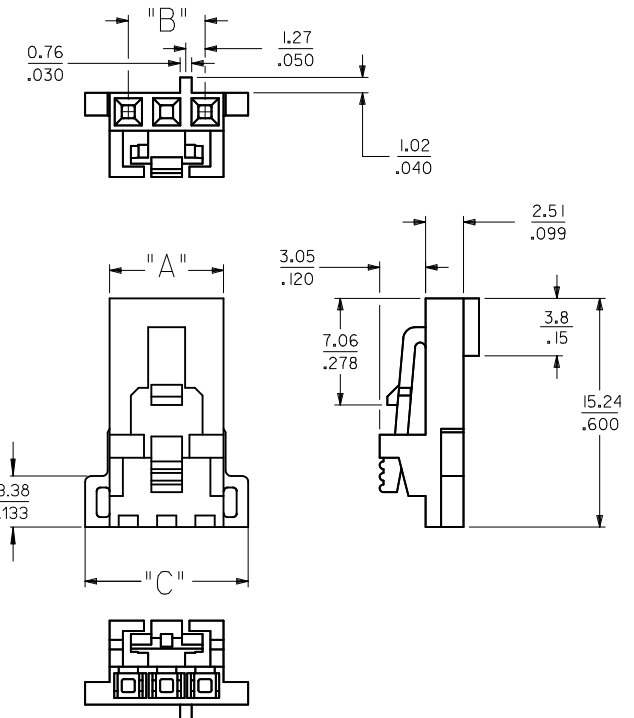
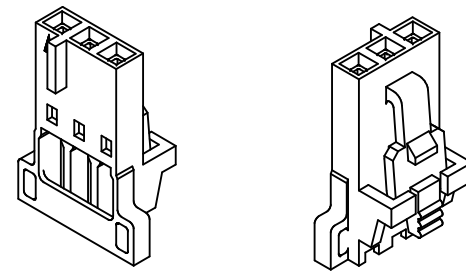


CKT SIZE	EDP. NUMBER	ENG. NUMBER	DIM. "A"	DIM. "B"	DIM. "C"
2	050-57-9702	70066-0386	(5.00) / .197	(2.54) / .100	(8.26) / .325
3	050-57-9703	70066-0387	(7.54) / .297	(5.08) / .200	(10.80) / .425
4	050-57-9704	70066-0388	(10.08) / .397	(7.62) / .300	(13.34) / .525
5	050-57-9705	70066-0389	(12.62) / .497	(10.16) / .400	(15.88) / .625
6	050-57-9706	70066-0390	(15.16) / .597	(12.70) / .500	(18.42) / .725
7	050-57-9707	70066-0391	(17.70) / .697	(15.24) / .600	(20.96) / .825
8	050-57-9708	70066-0392	(20.24) / .797	(17.78) / .700	(23.50) / .925

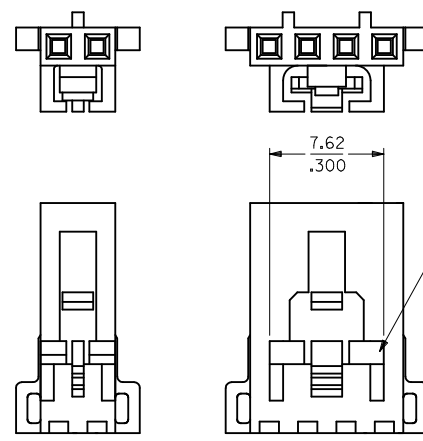
TERMINAL POSITION ASSURANCE (TPA) OPTION "N"



SEE TABLE

CIRCUIT #1 INDICATOR

2 CKT CONFIGURATION 4 THRU 8 CKT CONFIGURATION



- NOTES:
1. MATERIAL GLASS FILLED POLYESTER, UL94V-0, COLOR: BLACK.
 2. HOUSING MAY BE USED WITH TERMINAL NUMBERS 70058 AND 71851 AND RETENTION SUPPORT 73838.
 3. REFER TO CHART FOR AVAILABLE CIRCUIT SIZES.
 4. REFER TO MOLEX PRODUCT SPECIFICATION(S): PS-70400, PS-70058, PS-71851, PS-70021, AND MOLEX APPLICATION SPECIFICATION SDES-70400.
 5. PACKAGE PER PK-70066-100.

ADD PS-70400 EC NO: UCP2012-1540 DRW:DMORGAN 2011/11/14 CHK:DMIBARRA 2011/11/14 APPR:SMILLER 2012/02/13	QUALITY SYMBOLS	GENERAL TOLERANCES (UNLESS SPECIFIED)	DIMENSION STYLE	SCALE	DESIGN UNITS	THIRD ANGLE PROJECTION															
	$\nabla=0$ $\nabla=0$ $\nabla=0$	<table border="1"> <thead> <tr> <th></th> <th>mm</th> <th>INCH</th> </tr> </thead> <tbody> <tr> <td>4 PLACES</td> <td>± .010</td> <td>± .004</td> </tr> <tr> <td>3 PLACES</td> <td>± .010</td> <td>± .004</td> </tr> <tr> <td>2 PLACES</td> <td>± 0.25</td> <td>± .010</td> </tr> <tr> <td>1 PLACE</td> <td>± 0.38</td> <td>± .015</td> </tr> </tbody> </table>		mm	INCH	4 PLACES	± .010	± .004	3 PLACES	± .010	± .004	2 PLACES	± 0.25	± .010	1 PLACE	± 0.38	± .015	MM/IN	4:1	METRIC	
		mm	INCH																		
	4 PLACES	± .010	± .004																		
3 PLACES	± .010	± .004																			
2 PLACES	± 0.25	± .010																			
1 PLACE	± 0.38	± .015																			
DESCRIPTION	DRAFT WHERE APPLICABLE MUST REMAIN WITHIN DIMENSIONS	DRAWN BY: RE ISDORF CHECKED BY: RE ISDORF APPROVED BY: SMILLER DATE: 12/23/1998 DATE: 12/23/1998 DATE: 2012/02/13	TITLE	HOUSING, SL CRIMP FOR TERMINAL POSITION ASSURANCE, SALES DRAWING																	
REV		SIZE	SEE TABLE	DOCUMENT NO.	MOLEX INCORPORATED SD-70066-386																