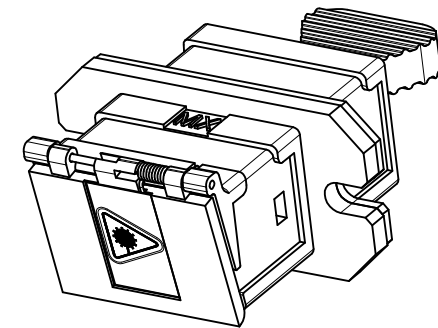
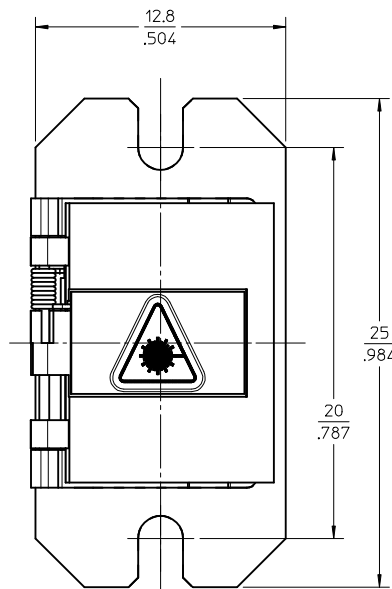
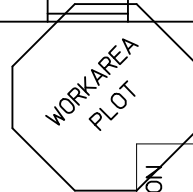
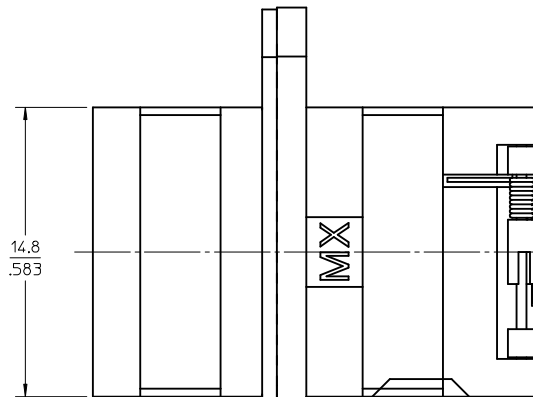
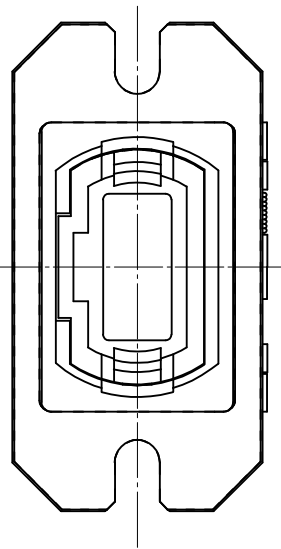
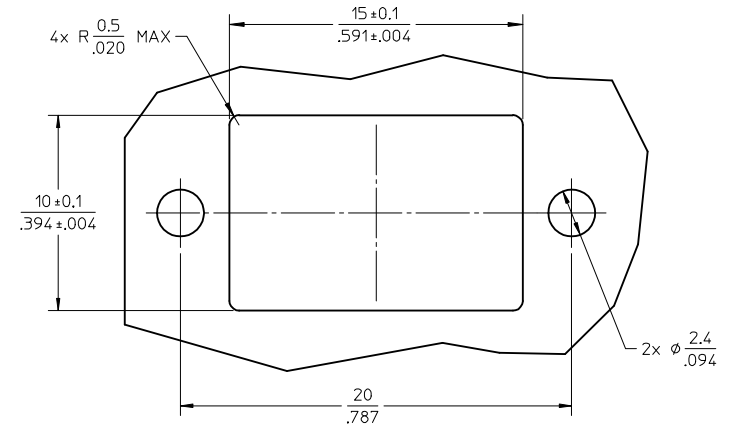
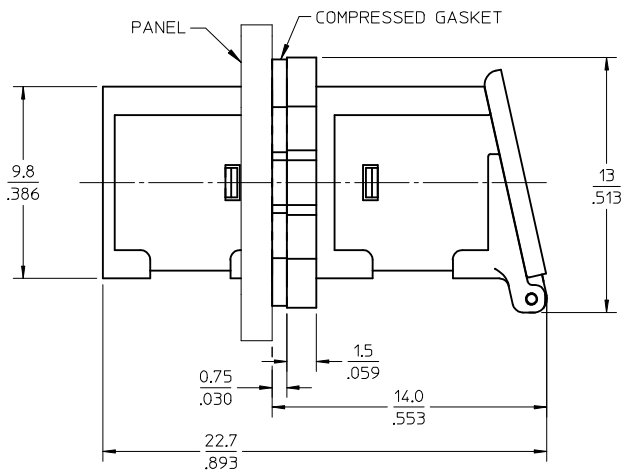


PART NUMBER	ADAPTER DOOR COLOR
1061141100	NONE
1061141210	RED
1061141220	BLUE



NOTES:

1. SILICONE GASKET WITH Ag/AI FILLER (SHOWN COMPRESSED) IS SUPPLIED WITH THE PART.
2. OUTER SHELL OF PART IS DIECAST.
3. DUST CAP SHOWN ONLY IN ISOMETRIC VIEW.
4. ADAPTERS TO BE PACKAGED IN TRAY.

ENTER DESCRIPTION
EC NO: MF2014-0036
DRAWN: YBEDNYAK 2013/07/31
CHKD:
APPR: IGUMIN 2013/08/06

QUALITY SYMBOLS
▽=0
▽=0

GENERAL TOLERANCES (UNLESS SPECIFIED)

	mm	INCH
4 PLACES	± ---	± ---
3 PLACES	± ---	± ---
2 PLACES	± 0.10	± ---
1 PLACE	± 0.10	± ---
ANGULAR ± 1/2°		

DRAFT WHERE APPLICABLE
MUST REMAIN
WITHIN DIMENSIONS

DIMENSION STYLE

IN/MM	DRAWN BY	DATE
IN/MM	PGIBLIN	2005/11/17
	CHECKED BY	DATE
	APPROVED BY	DATE
	MATERIAL NO.	1061141100
	SIZE	B

SCALE

4:1

DESIGN UNITS

INCH

THIRD ANGLE PROJECTION

TITLE
MPO EMI ADAPTER, FLANGE
FLANGE

MOLEX MOLEX INCORPORATED

DOCUMENT NO.
SD-106114-1100

SHEET NO.
1 OF 1

THIS DRAWING CONTAINS INFORMATION THAT IS PROPRIETARY TO MOLEX INCORPORATED AND SHOULD NOT BE USED WITHOUT WRITTEN PERMISSION