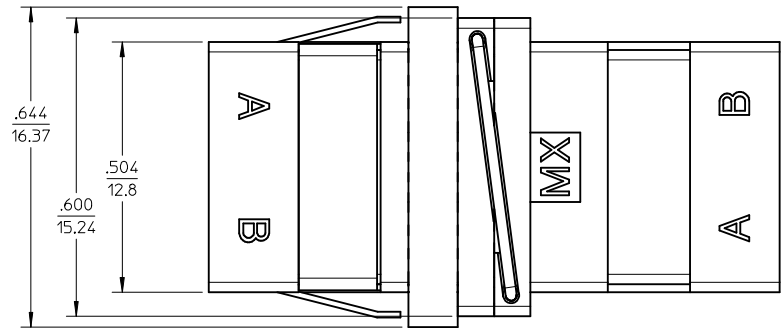
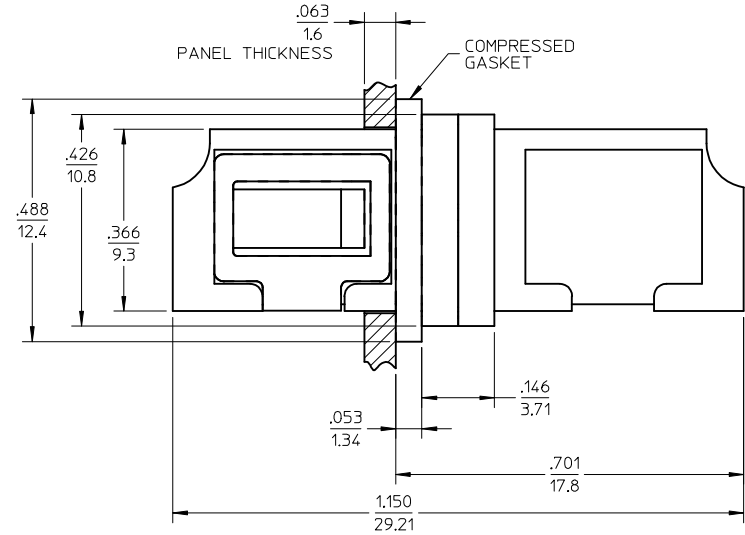
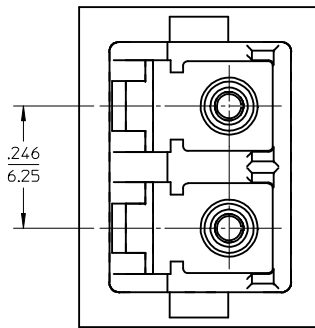
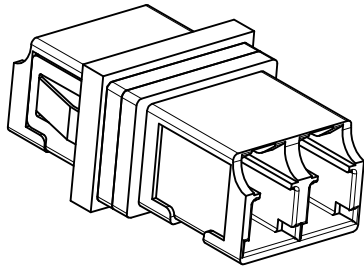
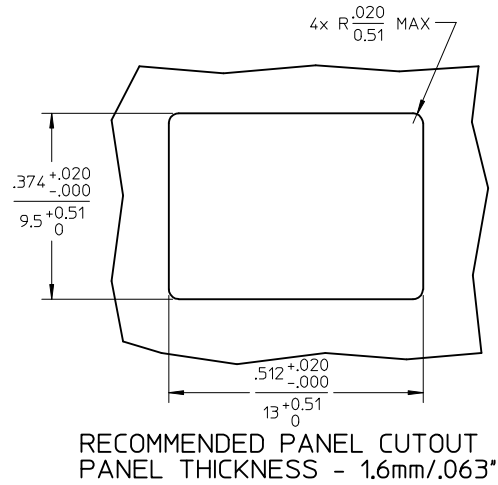


ADAPTER P/N	SPLIT SLEEVE MATERIAL
106115-2100	Zr
106115-2106	Ph. Bronze



NOTES:

- ALL DIMENSIONS ARE FOR REFERENCE ONLY.
- CONDUCTIVE FABRIC OVER FOAM GASKET IS SUPPLIED WITH PART.
- PART IS DIECAST.
- DUST CAPS NOT SHOWN.
- ADAPTERS TO BE PACKAGED IN TRAY.

ENTER DESCRIPTION EC NO: MF2013-0282 DRAWN: SMIGO 2012/11/13 CHKD: VCHEN 2012/11/13 APPR: WCHEN 2012/11/13	DESCRIPTION	QUALITY SYMBOLS <div>▽=0</div> <div>▽=0</div>	GENERAL TOLERANCES (UNLESS SPECIFIED)		DIMENSION STYLE IN/MM		SCALE 4:1	DESIGN UNITS INCH	THIRD ANGLE PROJECTION <div>⊙ □</div>						
				mm	INCH	DRAWN BY PGIBLIN	DATE 2005/12/08	TITLE LC-D EMI ADAPTER, (SNAP MOUNT)							
			4 PLACES	± ---	± ---	CHECKED BY	DATE								
			3 PLACES	± ---	± ---	APPROVED BY					DATE				
			2 PLACES	± ---	± ---										
			1 PLACE	± ---	± ---										
						ANGULAR ±1/2°		MOLEX		MOLEX INCORPORATED					
						DRAFT WHERE APPLICABLE MUST REMAIN WITHIN DIMENSIONS		MATERIAL NO. SEE TABLE		DOCUMENT NO. SD-106115-210X		SHEET NO. 1 OF 1			
								SIZE B		THIS DRAWING CONTAINS INFORMATION THAT IS PROPRIETARY TO MOLEX INCORPORATED AND SHOULD NOT BE USED WITHOUT WRITTEN PERMISSION					