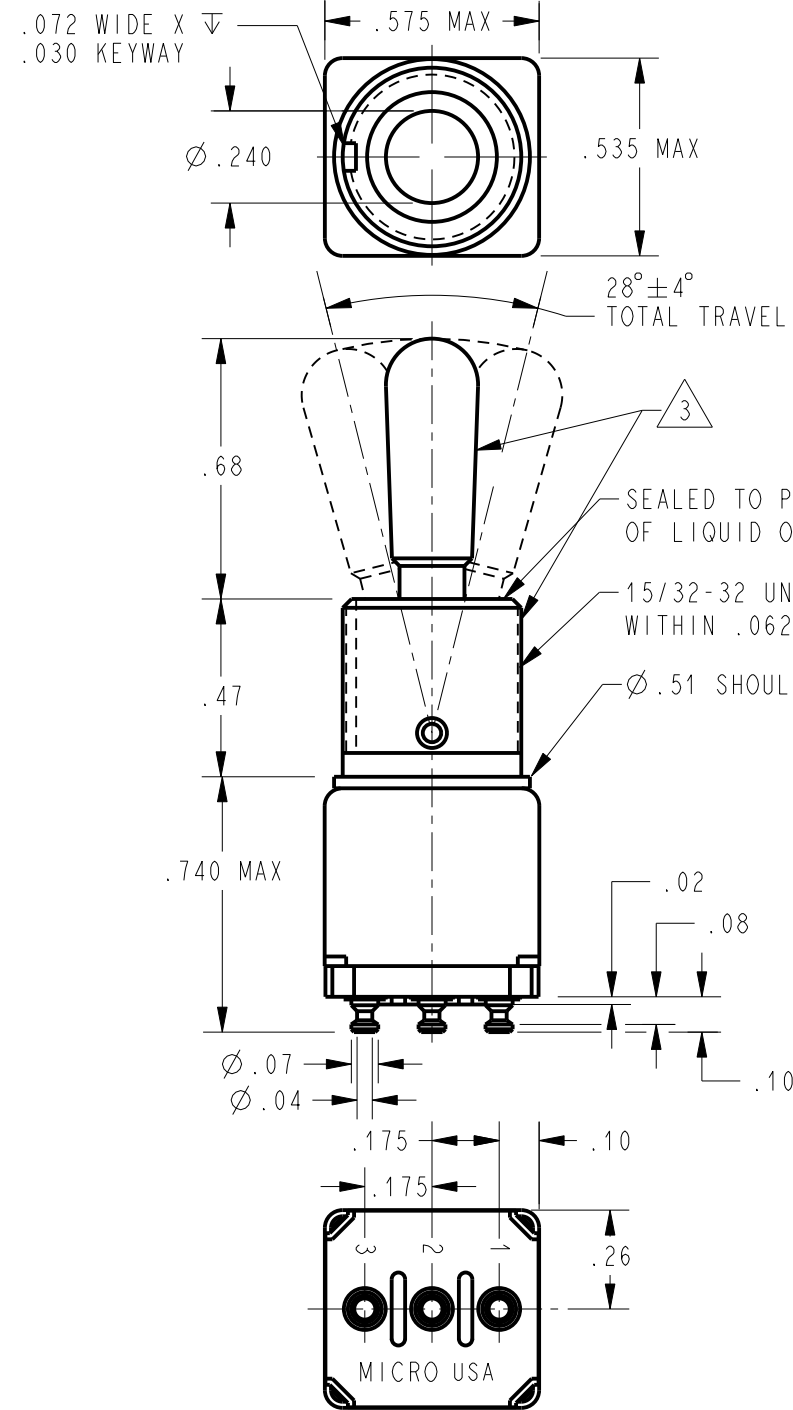


MICRO SWITCH
a Honeywell Division
FED. MFG. CODE 91929

SWITCH - TOGGLE

CATALOG LISTING
11TW108 SERIES CHART 1



THIS DRAWING COVERS A PROPRIETARY ITEM AND IS THE PROPERTY OF MICRO SWITCH, A DIVISION OF HONEYWELL. THIS DRAWING IS NOT TO BE COPIED OR USED WITHOUT THE APPROVAL OF MICRO SWITCH

CHARACTERISTICS

OPERATING FORCE
DIFFERENTIAL FORCE
RELEASE FORCE
PRETRAVEL
DIFFERENTIAL TRAVEL
OVERTRAVEL
FREE POSITION

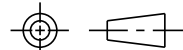
ELECTRICAL DATA

CONTACT ARRANGEMENT

5A-125 VAC
-L117-



THIRD ANGLE PROJECTION



SCALE 2:1

DO NOT SCALE PRINT

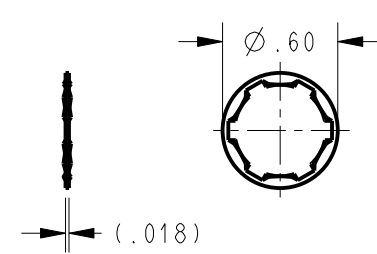
UNLESS OTHERWISE SPECIFIED
TOLERANCES ARE
ONE PLACE (.0) ±.030
TWO PLACE (.00) ±.015
THREE PLACE (.000) ±.005
ANGLES ±

WEIGHT .040 LB MAX

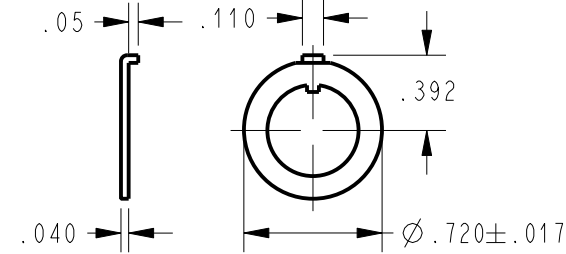
CATALOG LISTING

CIRCUIT MADE WITH
TOGGLE LEVER IN

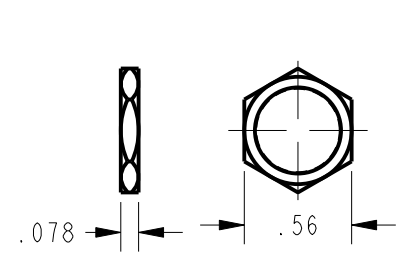
	KEYWAY SIDE (1-2)	CENTER (1-2)	OPPOSITE KEYWAY (2-3)
11TW108-1	ON	OFF	ON
11TW108-2	OFF	NONE	ON
11TW108-3	ON	NONE	ON
11TW108-21	NONE	OFF	ON
11TW108-31	NONE	ON	ON
11TW108-4	MOM OFF	NONE	ON
11TW108-5	MOM ON	OFF	ON
11TW108-6	MOM ON	NONE	OFF
11TW108-7	MOM ON	OFF	MOM ON
11TW108-8	MOM ON	NONE	ON
11TW108-41	NONE	MOM OFF	ON
11TW108-51	NONE	ON	MOM ON
11T108-61	MOM ON	OFF	NONE



LOCKWASHER



LOCKING RING



HEX NUT



NOTES

- 1 - FURNISHED UNASSEMBLED
- 2 - TERMINALS ARE PLATED FOR SOLDERING
- 3 - STAINLESS STEEL BUSHING AND LEVER

ANSI Y14.5M-1982 APPLIES