

CATALOG LISTING  
12TW401 SERIES  
CHART 1  
PAGE 1 OF 1  
RELEASE NO. PR-1190  
REPLACES  
DRAWING NUMBER  
14  
ISSUE  
14  
CHECK  
REVISIONS  
A PR 7080-T  
T M M 26 APR 78  
B C050565  
C JH DEC 81  
C C056281  
T SK 24 APR 85  
D C061252  
J AP 13 MAR 87  
E C062939  
T SK 24 FEB 88  
F C077368  
T SM 4 APRIL 94  
G C0-95308  
C S L 9 NOV 99  
FORMTEK  
DRAWN  
T M M 26 APR 78  
CHECK  
C E D 1 MAY 78  
CHECK

**MICRO SWITCH**  
FREEPORT, ILLINOIS, U.S.A.  
A DIVISION OF HONEYWELL  
FED. MFG. CODE 91929

**SWITCH - TOGGLE**

CATALOG LISTING  
**12TW401 SERIES**  
**CHART 1**

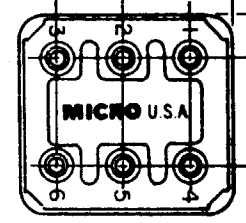
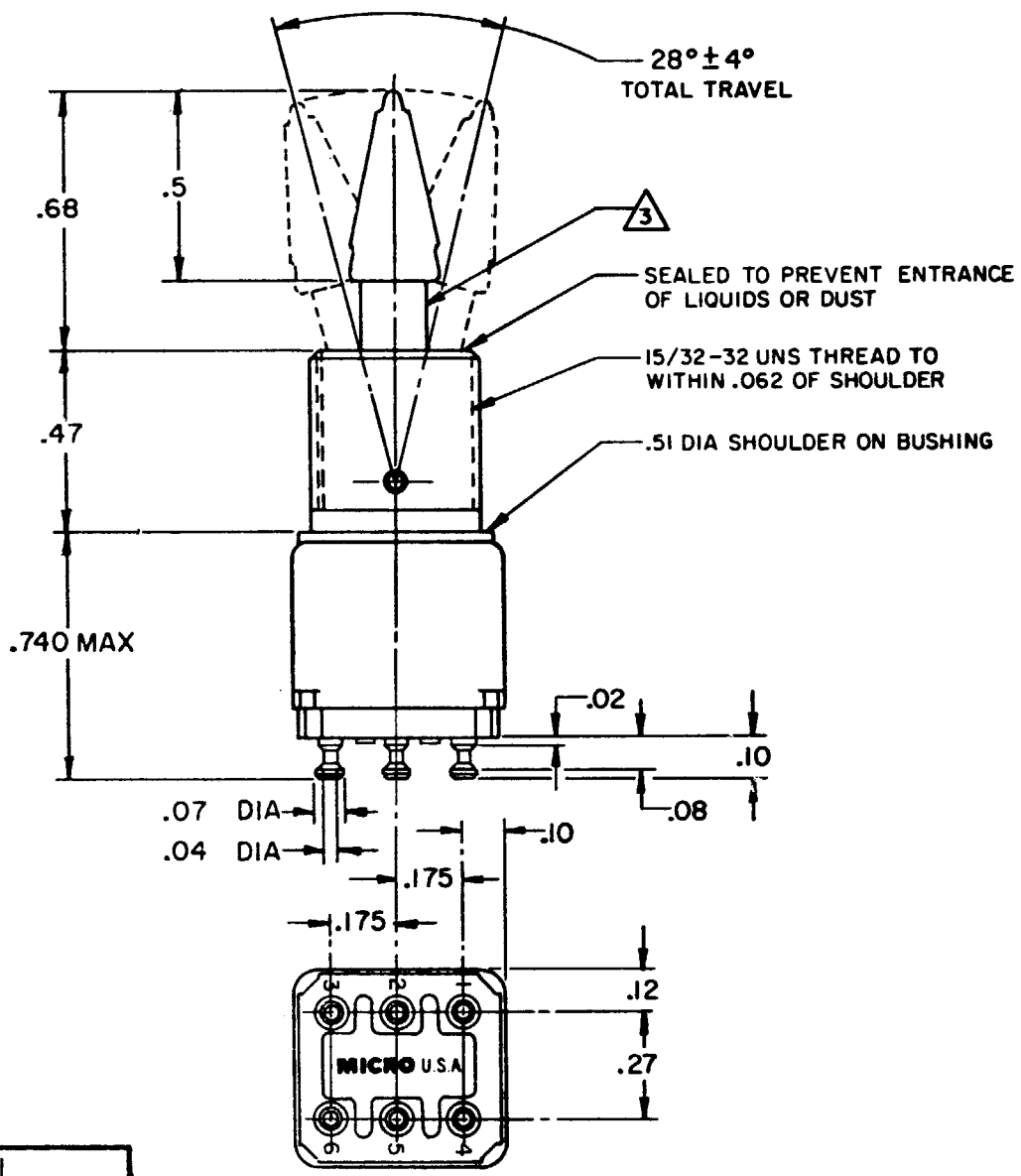
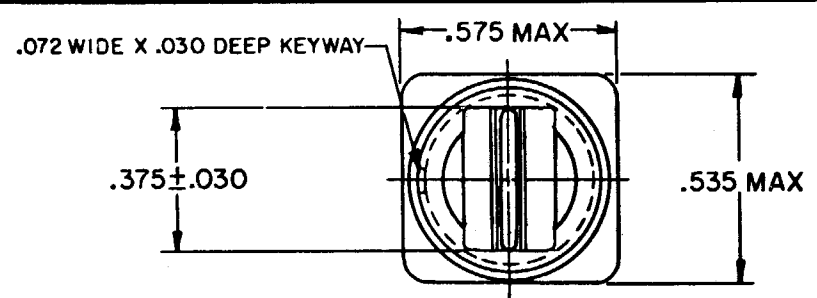
CATALOG LISTING

	CATALOG LISTING	CIRCUIT MADE WITH TOGGLE LEVER IN		
		KEYWAY SIDE (1-2,4-5)	CENTER (1-2,4-5)	OPPOSITE KEYWAY (2-3,5-6)
	12TW401-1	ON	OFF	ON
	12TW401-2	OFF	NONE	ON
	12TW401-3	ON	NONE	ON
	12TW401-21	NONE	OFF	ON
	(G)	NONE	ON	ON
	12TW401-4	MOM OFF	NONE	ON
	12TW401-5	MOM ON	OFF	ON
	12TW401-6	MOM ON	NONE	OFF
	12TW401-7	MOM ON	OFF	MOM ON
	12TW401-8	MOM ON	NONE	ON
	12TW401-41	NONE	MOM OFF	ON
	(G)	NONE	ON	MOM ON
	12TW401-61	MOM ON	OFF	NONE

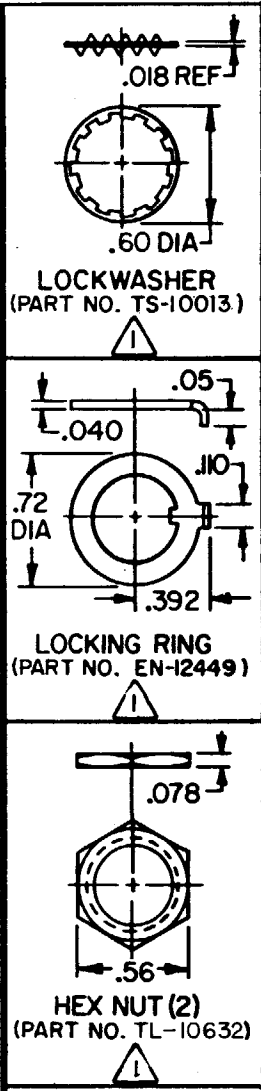
ELECTRICAL RATING

CODE L117 5A-125 VAC

THIS DRAWING COVERS A PROPRIETARY ITEM AND IS THE PROPERTY OF MICRO SWITCH, A DIVISION OF HONEYWELL. THIS DRAWING IS NOT TO BE COPIED OR USED WITHOUT THE APPROVAL OF MICRO SWITCH.



- NOTES
- 1 FURNISHED UNASSEMBLED
  - 2 - TERMINALS ARE PLATED FOR SOLDERING
  - 3 MATTE FINISH



SCALE 2:1  
DO NOT SCALE PRINT  
UNLESS OTHERWISE NOTED  
DIMENSIONS ARE IN INCHES  
TOLERANCES ARE:  
ONE PLACE (.0) ±.030  
TWO PLACE (.00) ±.018  
THREE PLACE (.000) ±.008  
ANGLES ±  
WEIGHT .025 LB MAX