

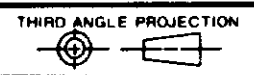
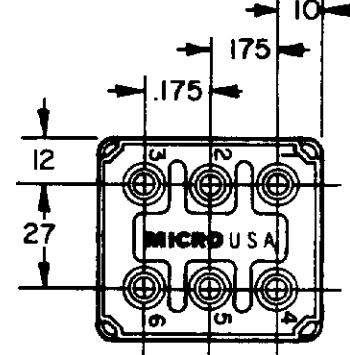
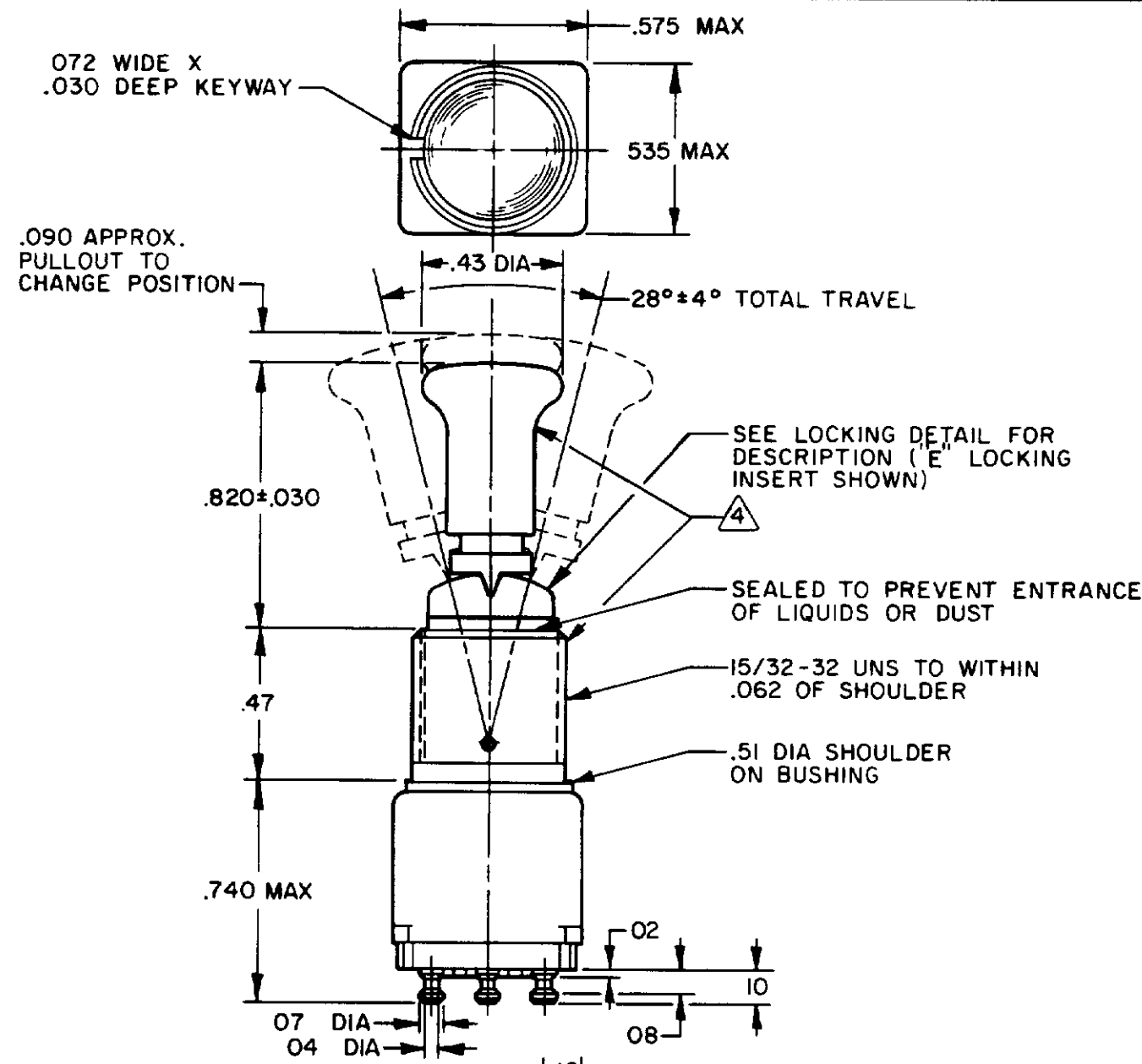
CATALOG LISTING 12TW59-50
PAGE 1 OF 1 SERIES CHART 1
ISSUE 1
RELEASE NO CO-78465
CHECK
REVISIONS
CHECK
KAG 23 JUN 94
LJF 10 JUN 94
DRAWN

MICRO SWITCH
FREEPORT ILLINOIS U S A
A DIVISION OF HONEYWELL
FED. MFG. CODE 91929

SWITCH-TOGGLE

CATALOG LISTING
12TW59-50
SERIES CHART 1

THIS DRAWING COVERS A PROPRIETARY ITEM AND IS THE PROPERTY OF MICRO SWITCH, A DIVISION OF HONEYWELL. THIS DRAWING IS NOT TO BE COPIED OR USED WITHOUT THE APPROVAL OF MICRO SWITCH.



SCALE 2:1

DO NOT SCALE PRINT

TOLERANCES
APPLY TO DESIGN UNITS. CONVERSIONS ARE ONLY FOR REFERENCE. UNLESS NOTED TOLERANCES ARE:

	DIM	TOL	DIM	TOL
	mm	mm/in	in	mm/in
NO PLACES	X	1/64		
ONE PLACE	X X	0.0015	X X	0.0015
TWO PLACES	X X X	0.0005	X X X	0.0005
THREE PLACES	X X X X	0.0002	X X X X	0.0002
ANGLES				

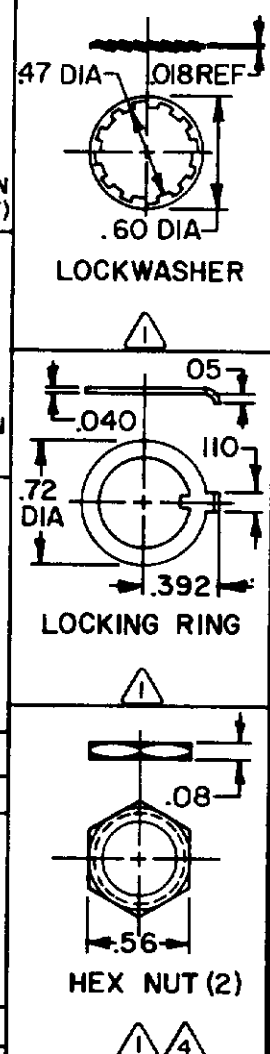
SI METRIC ☐ US CUSTOMARY ☒

DESIGN UNITS

RAW MATERIAL—COMMERCIAL STANDARD
MICRO SWITCH STANDARDS APPLY
DIMENSIONS ARE TO BE MET BEFORE
PROTECTIVE COATINGS ARE APPLIED

WEIGHT

CATALOG LISTING 2		2 AVAILABLE LOCKING COMBINATIONS FOR CONFIGURATION SEE LETTERED DETAILS	ELECTRICAL DATA			
12TW59-50		E, F, H, K, L, M, N	CODE L 117 5A-125 VAC SF RJ			
"A" 2 LOCKED IN THREE POSITIONS	"B" 2 LOCKED IN CENTER AND EXTREME POSITION (KEYWAY SIDE)	"D" 2 LOCKED OUT OF CENTER POSITION	"E" 2 LOCKED IN CENTER POSITION	"F" 2 LOCKED IN EXTREME POSITION (OPPOSITE KEYWAY)	 LOCKWASHER	
"G" 2 LOCKED IN EXTREME POSITION (KEYWAY SIDE)	"H" 2 LOCKED OUT OF CENTER AND EXTREME POSITION (KEYWAY SIDE)	"J" 2 LOCKED OUT OF CENTER AND EXTREME POSITION (OPPOSITE KEYWAY)	"K" 2 LOCKED IN CENTER AND EXTREME POSITION (OPPOSITE KEYWAY)	"L" 2 LOCKED OUT OF EXTREME POSITION (KEYWAY SIDE)		 LOCKING RING
"M" 2 LOCKED OUT OF AND INTO EXTREME POSITION (OPPOSITE KEYWAY)	"N" 2 LOCKED OUT OF EXTREME POSITION (OPPOSITE KEYWAY)	"P" 2 LOCKED OUT OF AND INTO EXTREME POSITION (KEYWAY SIDE)				
CIRCUIT MADE WITH TOGGLE LEVER IN						
KEYWAY SIDE 	CENTER 	OPPOSITE KEYWAY 				
MOMENTARY POSITION	MAINTAINED POSITION	MAINTAINED POSITION				



- NOTES
- 1 FURNISHED UNASSEMBLED
 - 2 SUFFIX MUST BE ADDED FOR DESIRED TYPE TOGGLE LOCKING. SEE CHART FOR AVAILABLE LOCKING COMBINATIONS
 - 3 - TERMINALS ARE PLATED FOR SOLDERING
 - 4 MATTE FINISH