

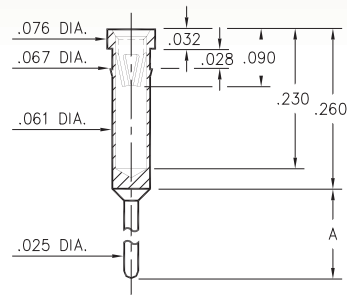
# PIN RECEPTACLES

FOR .025" - .037" DIAMETER PINS AND .025" SQUARE PINS

## 0401/6401

X401-0-15-XX-47-XX-04-0

Press-fit in .064 mounting hole

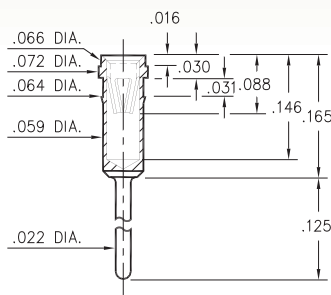


Basic Part Number	Length A
0401-0	.340
6401-0	.540

## 1303

1303-0-15-XX-47-XX-04-0

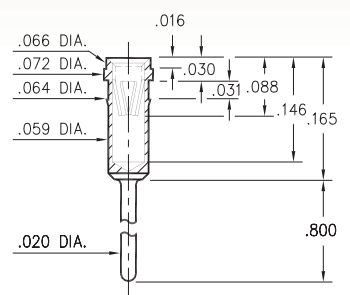
Press-fit in .061 mounting hole



## 8303

8303-0-15-XX-47-XX-04-0

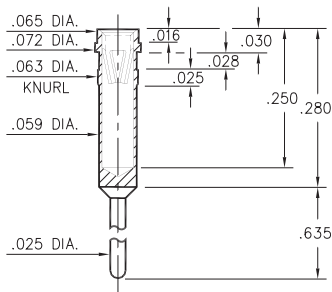
Press-fit in .061 mounting hole



## 4095

4095-0-15-XX-47-XX-04-0

Press-fit in .061 mounting hole



## 8806

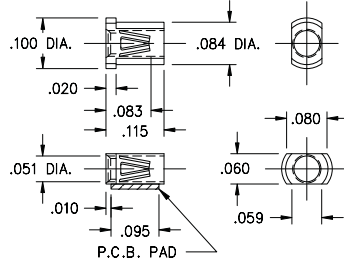
8806-0-18-XX-47-XX-40-0

Surface mount

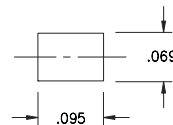
Also available on 12mm wide carrier tape:

4,000 parts per 13" reel

Order as: 8806-0-58-XX-47-XX-10-0



P.C.B. Layout



### SPECIFICATIONS:

**Shell Material:** Brass Alloy 360, 1/2 Hard

**Contact Material:** Beryllium Copper Alloy 172, HT

**Dimensions:** Inches

**Tolerances On:** Lengths: ±.005

Diameters: ±.002

Angles: ± 2°



**ORDER CODE:** XXXX - X - 1X - XX - 47 - XX - XX - 0

**BASIC PART #**

**SPECIFY SHELL FINISH:**

- 01 200 μ" TIN/LEAD OVER NICKEL
- ◆ 80 200 μ" TIN OVER NICKEL (RoHS)
- ◆ 15 10 μ" GOLD OVER NICKEL (RoHS)

**SPECIFY CONTACT FINISH:**

- 01 200 μ" TIN/LEAD OVER NICKEL
- ◆ 80 200 μ" TIN OVER NICKEL (RoHS)
- ◆ 27 30 μ" GOLD OVER NICKEL (RoHS)

**SELECT CONTACT:**

#47 CONTACT (DATA ON PAGE 256)

(For alternate contact choices, see group D on page 248)

