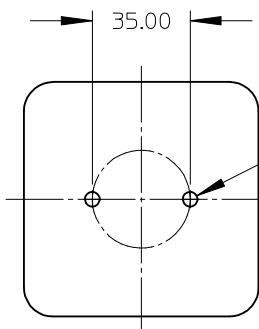



SECTION Z-Z

- 1) MATERIALS:
 - a. CAPS: NATURAL COLOR PA66 NYLON 25% GF UL94V-0
 - b. HOUSING: NATURAL COLOR PA66 NYLON 25% GF UL94V-0
- 2) WIRE TRAP TERMINALS: COPPER ALLOY
 - a. FINISH: GOLD OVER NICKEL
- 3) THIS PRODUCT IS ELV AND ROHS COMPLIANT
- 4) APPLICABLE WIRE GAUGE - 18 OR 20 AWG
 - a. SOLID WIRE IS RECOMMENDED
 - b. IF STRANDED WIRE IS USED, PRE-TINNED IS RECOMMENDED
 - c. 1 cm +2/-0 mm STRIP LENGTH IS RECOMMENDED
- 5) MOUNT HOLDER USING M3 OR 4-40 SCREWS (2), 0.8 NEWTON METERS MAX TORQUE
- 6) UL RECOGNITION TO UL496 - PENDING
 c-UL RECOGNITION TO CSA-C22.2 NO. 43 (2008) - PENDING
 RATED 600V
 UL FILE NUMBER: PENDING



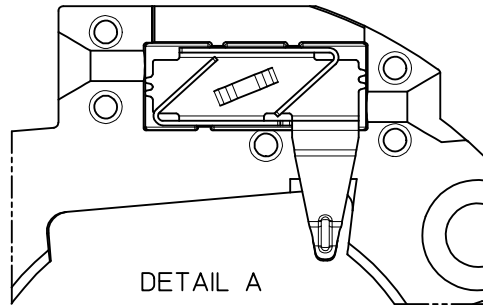
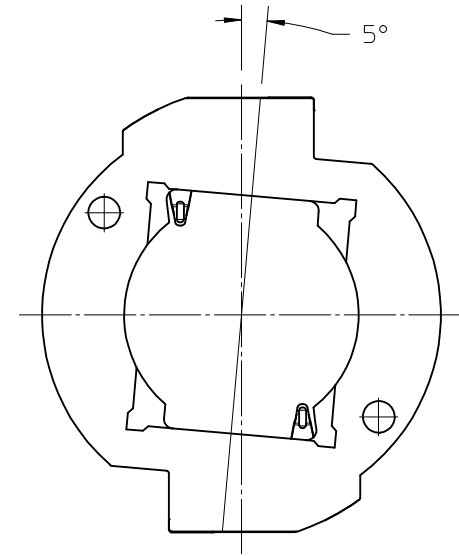
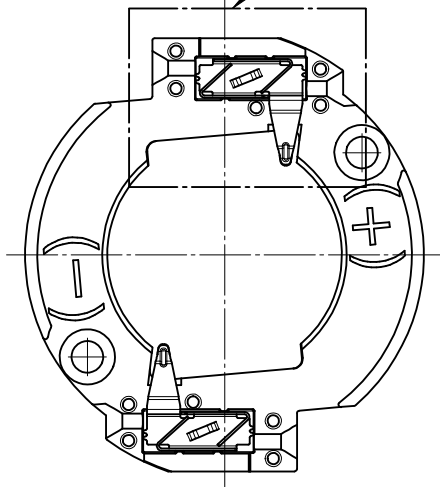
RECOMMENDED MOUNTING DIMENSIONS (NTS)

M3 OR 4-40 TAPPED HOLES (2)
 TORQUE SCREWS 0.8 NEWTON METERS MAX

ENTER DESCRIPTION EC NO: SSL2013-0097 DRAWN: CARRANZA 2013/03/04 CHKD: APPR: DMCGOWAN 2013/03/06		DESCRIPTION	QUALITY SYMBOLS F=0 F=0 F=0	GENERAL TOLERANCES (UNLESS SPECIFIED)		DIMENSION STYLE MM ONLY		SCALE 2:1	DESIGN UNITS METRIC	THIRD ANGLE PROJECTION 						
					mm	INCH	DRAWN BY MDEVITO	DATE 2012/02/03	TITLE SHARP MEGA ZENIGATA							
				4 PLACES	± ---	± ---	CHECKED BY	DATE								
				3 PLACES	± ---	± ---	APPROVED BY DMCGOWAN					DATE 2012/02/07				
				2 PLACES	± 0.13	± ---										
1 PLACE	± 0.25	± ---	MATERIAL NO. 1803300002					DOCUMENT NO. SD-180330-002								
ANGULAR ±1/2°																
DRAFT WHERE APPLICABLE MUST REMAIN WITHIN DIMENSIONS		SIZE B		THIS DRAWING CONTAINS INFORMATION THAT IS PROPRIETARY TO MOLEX INCORPORATED AND SHOULD NOT BE USED WITHOUT WRITTEN PERMISSION												
				SHEET NO. 1 OF 2												

WIRE TRAP CAPS ARE REMOVED FROM FRONT VIEW FOR CLARITY

SEE DETAIL A



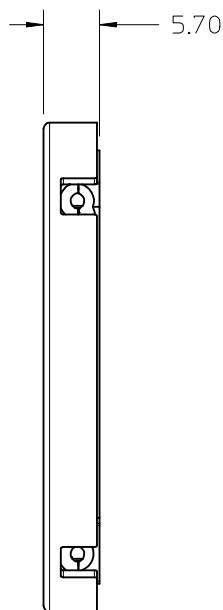
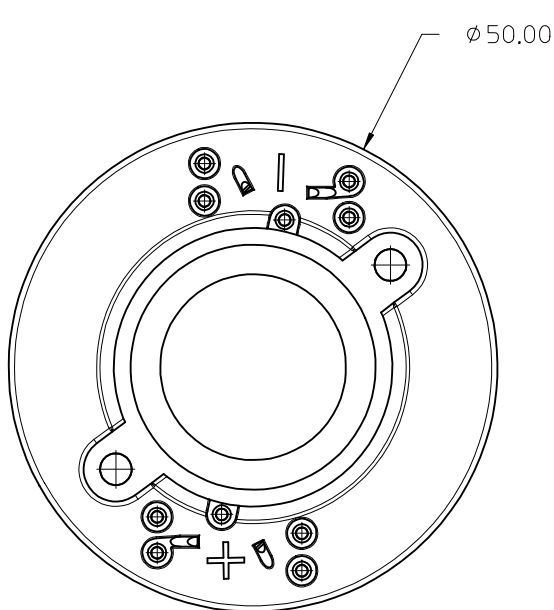
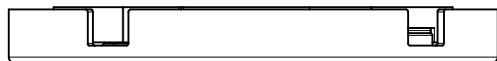
DETAIL A
Scale 4:1

VIEW OF TWO-WAY WIRE TRAP

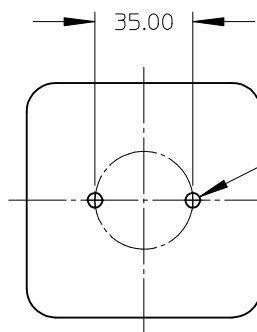
WIRE TRAPS WILL ACCOMODATE
EITHER 18 OR 20 GAUGE WIRE

ENTER DESCRIPTION EC NO: SSL2013-0097 DRWNG: CARRANZA 2013/03/04 CHKD: APPR: DMCGOWAN 2013/03/06	DESCRIPTION	QUALITY SYMBOLS <div><div><div>FA=0</div></div><div><div>FB=0</div></div><div><div>FC=0</div></div></div>	GENERAL TOLERANCES (UNLESS SPECIFIED)		DIMENSION STYLE MM ONLY		SCALE 2:1	DESIGN UNITS METRIC	THIRD ANGLE PROJECTION						
				mm	INCH	DRAWN BY MDEVITO	DATE 2012/02/03	TITLE SHARP MEGA ZENIGATA							
			4 PLACES	± ---	± ---	CHECKED BY	DATE								
			3 PLACES	± ---	± ---	APPROVED BY DMCGOWAN 2012/02/07									
			2 PLACES	± 0.13	± ---						MOLEX MOLEX INCORPORATED				
			1 PLACE	± 0.25	± ---										
ANGULAR ±1/2°			DOCUMENT NO. SD-180330-002												
DRAFT WHERE APPLICABLE MUST REMAIN WITHIN DIMENSIONS								SHEET NO. 2 OF 2							
			THIS DRAWING CONTAINS INFORMATION THAT IS PROPRIETARY TO MOLEX INCORPORATED AND SHOULD NOT BE USED WITHOUT WRITTEN PERMISSION												

10 9 8 7 6 5 4 3 2 1



- 1) MATERIALS:
 - a. COVER: NATURAL COLOR PBT 30% GF UL94V-0
 - b. HOUSING: NATURAL COLOR PA66 NYLON 25% GF UL94V-0
 - 2) WIRE TRAP TERMINALS: COPPER ALLOY
 - a. FINISH: GOLD OVER NICKEL
 - 3) THIS PRODUCT IS ELV AND ROHS COMPLIANT
 - 4) APPLICABLE WIRE GAUGE - 18 OR 20 AWG
 - a. SOLID WIRE IS RECOMMENDED
 - b. IF STRANDED WIRE IS USED, PRE-TINNED IS RECOMMENDED
 - c. 1 cm STRIP LENGTH IS RECOMMENDED
 - 5) MOUNT HOLDER USING M3 SCREWS (2), 0.8 NEWTON METERS MAX TORQUE
 - 6) UL RECOGNITION TO UL496 - PENDING
 - c-UL RECOGNITION TO CSA-C22.2 NO. 43 (2008) - PENDING
- RATED 600V
UL FILE NUMBER: PENDING



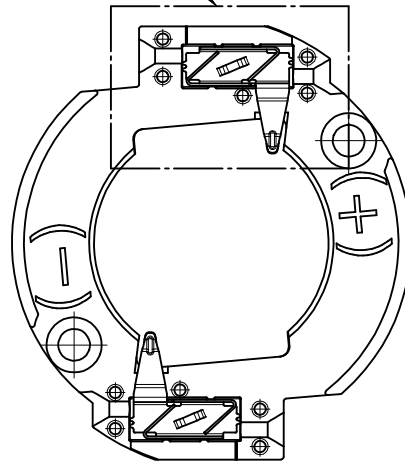
M3 OR 4-40 TAPPED HOLES (2)
TORQUE SCREWS 0.8 NEWTON METERS MAX

RECOMMENDED MOUNTING DIMENSIONS (NTS)

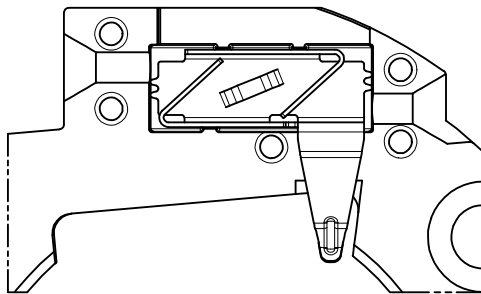
ENTER DESCRIPTION EC NO: SSL2013-0018 DRAWN: CARRANZA 2012/08/22 CHKD: APPR: DMC GOWAN 2012/08/23		QUALITY SYMBOLS		GENERAL TOLERANCES (UNLESS SPECIFIED)		DIMENSION STYLE MM ONLY		SCALE 2:1	DESIGN UNITS METRIC	THIRD ANGLE PROJECTION	
		F _A =0		mm INCH		DRAWN BY DATE		TITLE MEGA ZENIGATA ZHAGA LED HOLDER			
		F _C =0		4 PLACES ± --- ± ---		MDEVITO 2012/02/10					
		F _P =0		3 PLACES ± --- ± ---		CHECKED BY DATE		MOLEX INCORPORATED			
				2 PLACES ± 0.13 ± ---		APPROVED BY DATE					
				1 PLACE ± 0.25 ± ---		DMCGOWAN 2012/04/26		DOCUMENT NO. SD-180330-003			
				ANGULAR ±1/2°		MATERIAL NO. 1803300003					
				DRAFT WHERE APPLICABLE MUST REMAIN WITHIN DIMENSIONS		SIZE B		THIS DRAWING CONTAINS INFORMATION THAT IS PROPRIETARY TO MOLEX INCORPORATED AND SHOULD NOT BE USED WITHOUT WRITTEN PERMISSION			

10 9 8 7 6 5 4 3 2 1

SEE DETAIL A





COVER REMOVED FROM FRONT VIEW FOR CLARITY



DETAIL A
Scale 4:1

VIEW OF TWO-WAY WIRE TRAP

WIRE TRAPS WILL ACCOMODATE
EITHER 18 OR 20 GAUGE WIRE

ENTER DESCRIPTION EC NO: SSL2013-0018 DRAWN: CARRANZA 2012/08/22 CHKD: APPR: DMCGOWAN 2012/08/23 REV	DESCRIPTION	QUALITY SYMBOLS F=0 F=0 F=0	GENERAL TOLERANCES (UNLESS SPECIFIED)		DIMENSION STYLE MM ONLY		SCALE 2:1	DESIGN UNITS METRIC	 THIRD ANGLE PROJECTION	
				mm	INCH	DRAWN BY MDEVITO	DATE 2012/02/10	TITLE MEGA ZENIGATA ZHAGA LED HOLDER		
			4 PLACES	± ---	± ---	CHECKED BY	DATE			
			3 PLACES	± ---	± ---	APPROVED BY DMCGOWAN		DATE 2012/04/26		 MOLEX INCORPORATED
			2 PLACES	± 0.13	± ---					
			1 PLACE	± 0.25	± ---	MATERIAL NO. 1803300003		DOCUMENT NO. SD-180330-003		SHEET NO. 2 OF 2
			ANGULAR ±1/2°							
DRAFT WHERE APPLICABLE MUST REMAIN WITHIN DIMENSIONS			SIZE B	THIS DRAWING CONTAINS INFORMATION THAT IS PROPRIETARY TO MOLEX INCORPORATED AND SHOULD NOT BE USED WITHOUT WRITTEN PERMISSION						