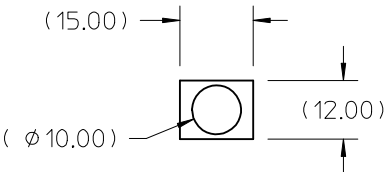
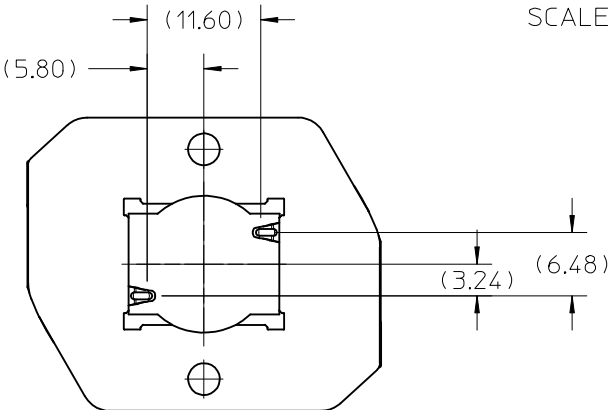
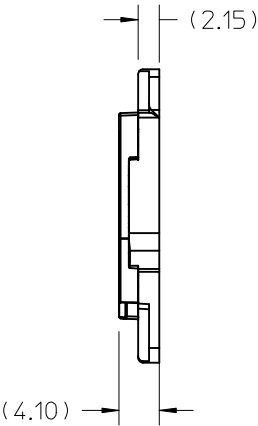
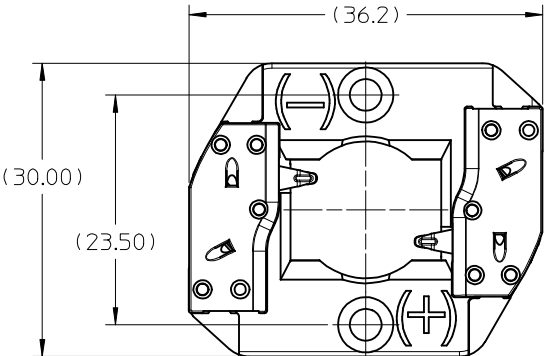


10	9	8	7	6	5	4	3	2	1
PART NUMBER	DESCRIPTION			MATERIAL		COLOR			
180390-0002	SHARP MINI ZENIGATA LED HOLDER ASSEMBLY - NYLON			POLYAMIDE, GLASS FILLED		NATURAL			
180390-0102	SHARP MINI ZENIGATA LED HOLDER ASSEMBLY - PBT			POLYESTER, GLASS FILLED		WHITE			



ISO TOP VIEW
SCALE 1:1



TYP COB LED
SCALE 1:1

- NOTES:
- 1) MATERIALS: HOUSING AND CAP: SEE CHART
TERMINAL: COPPER ALLOY; FINISH: LED CONTACT: GOLD OVER NICKEL, WIRE TRAP: TIN OVER NICKEL
 - 2) THIS PRODUCT IS ELV AND ROHS COMPLIANT
 - 3) APPLICABLE WIRE GAUGE - 18, 20, AND 22 AWG
 - a. SOLID WIRE IS PREFERRED
 - b. FOR STRANDED WIRE, PRE-TINNED IS RECOMMENDED
 - c. 1 cm +2/-0 mm STRIP LENGTH IS RECOMMENDED
 - 4) MOUNT HOLDER USING M3 OR 4-40 SCREWS (2), 0.4 MIN 0.8 MAX NEWTON METERS TORQUE
 - 5) UL RECOGNITION TO UL496; c-UL RECOGNITION TO CSA-C22.2 NO. 43 (2008); RATED 600V; UL FILE NUMBER: E345583
 - 6) ALL DIMENSIONS IN PARENTHESES (XX.XX) ARE FOR REFERENCE ONLY

ENTER DESCRIPTION EC NO: SSL2014-0048 2013/10/22 DRAWN:MCOLE CHKD: APPR:DMCGOWAN 2013/10/30		DESCRIPTION REV	QUALITY SYMBOLS <div>F_A=0</div> <div>F_G=0</div> <div>F_P=0</div>	GENERAL TOLERANCES (UNLESS SPECIFIED)		DIMENSION STYLE MM ONLY		SCALE 2:1	DESIGN UNITS METRIC	THIRD ANGLE PROJECTION		
					mm	INCH	DRAWN BY MDEVITO		DATE 2012/02/03	TITLE SHARP MINI ZENIGATA COB LED HOLDER ASSEMBLY		
				4 PLACES	± ---	± ---	CHECKED BY		DATE			
				3 PLACES	± ---	± ---	APPROVED BY DMCGOWAN		DATE 2012/02/07	MOLEX MOLEX INCORPORATED		
				2 PLACES	± 0.13	± ---						
				1 PLACE	± 0.25	± ---						
				ANGULAR ±1/2°		MATERIAL NO.		DOCUMENT NO.		SHEET NO.		
				DRAFT WHERE APPLICABLE MUST REMAIN WITHIN DIMENSIONS		SEE CHART		SD-180390-002		1 OF 2		
						SIZE B		THIS DRAWING CONTAINS INFORMATION THAT IS PROPRIETARY TO MOLEX INCORPORATED AND SHOULD NOT BE USED WITHOUT WRITTEN PERMISSION				

