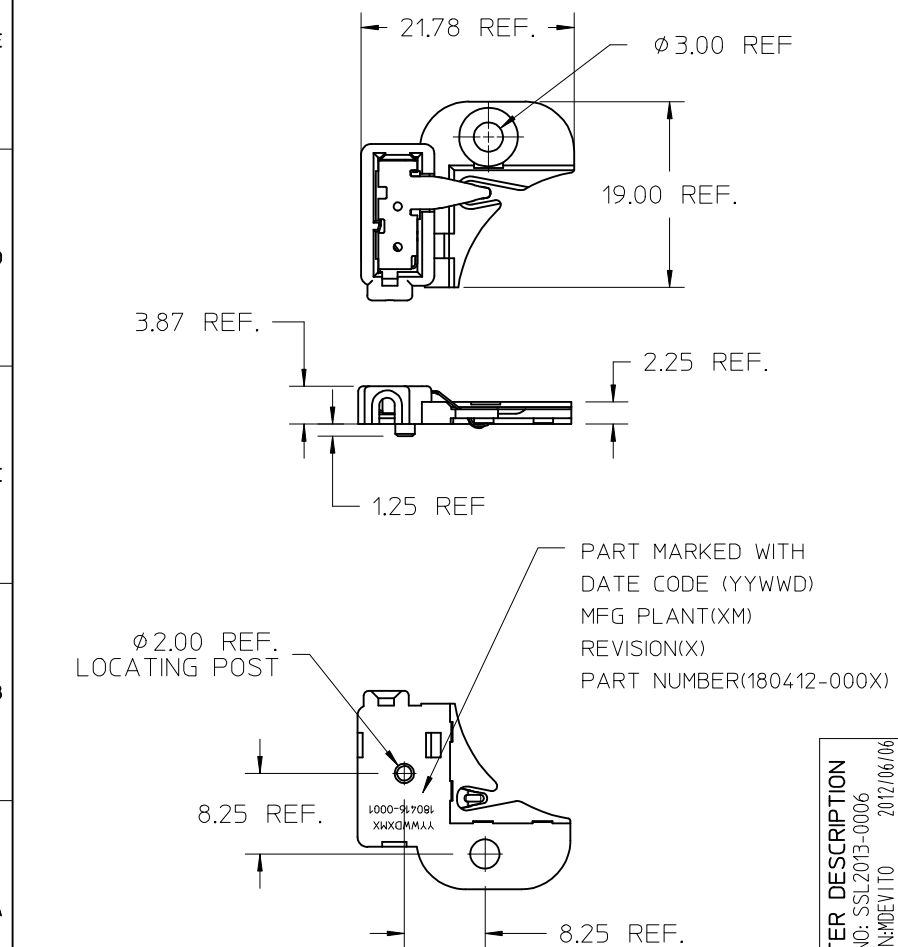
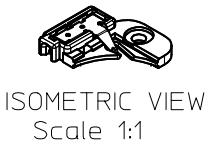


| 10 | 9 | 8 | 7 | 6 |
|-------------|---|---|---|---|
| PART NUMBER | DESCRIPTION | | | |
| 180416-0001 | CLL040-CLL050 HOLDER ASSEMBLY - NO CAP | | | |
| 180416-0002 | CLL040-CLL050 HOLDER ASSEMBLY - CAP WITH TAB | | | |
| 180416-0003 | CLL040-CLL050 HOLDER ASSEMBLY - CAP WITHOUT TAB | | | |

HOLDER ASSEMBLY - NO CAP



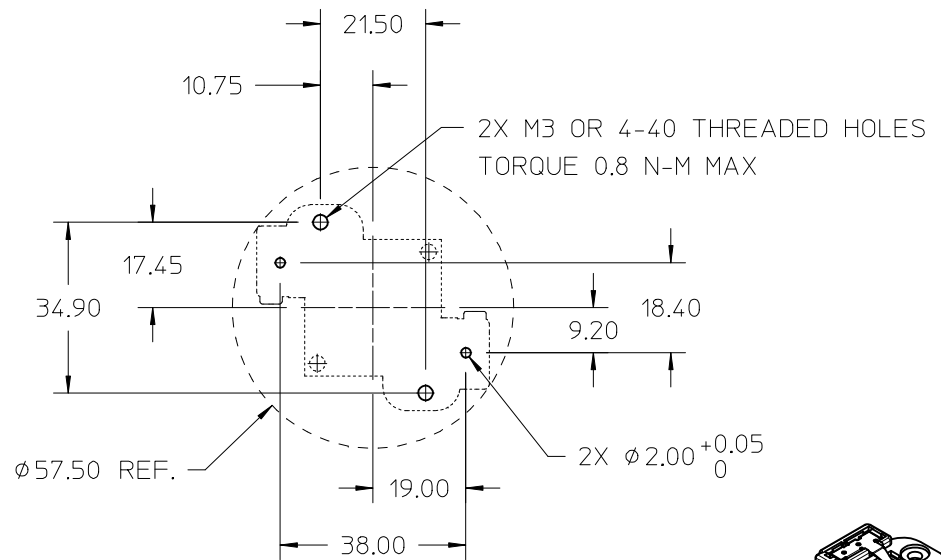
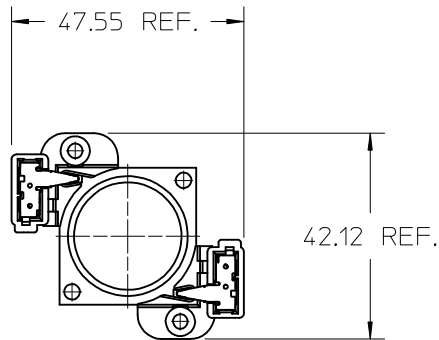
- NOTES:
1. MATERIALS: HOUSING: POLYAMIDE (PA66), GLASS FILLED, UL94V-0, 5VA (89992-0289); CAP: POLYAMIDE (PA66) UNFILLED, UL94V-0 (89992-0922); TERMINAL: COPPER ALLOY
 2. FINISHES: TERMINAL: NICKEL (Ni) UNDERPLATE 1.27 μ m, SELECT TIN (Sn) 2.54 μ m, SELECT GOLD (Au) 0.76 μ m
 3. PRODUCT SPECIFICATION: PS-180412-001
 4. PACKAGING SPECIFICATION: PK-180416-001
 5. APPLICATION SPECIFICATION: AS-180412-001
 6. FOR USE WITH: CITIZEN COB SERIES CLL040 OR CLL050 LEDS
 7. HOLDER ASSEMBLY AVAILABLE WITH OPTIONAL CAP SEE CHART FOR PART NUMBERS
 8. TWO HOLDER ASSEMBLIES ARE REQUIRED FOR EACH LED.
 9. WIRE GAUGE: 18 OR 20 AWG, SOLID OR STRANDED WITH TIN OVERCOAT. STRIP LENGTH 1CM.
 10. UL:OLFB2 UL496 FILE: E345583 (PENDING)



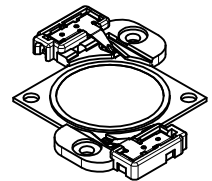
SHEET 1 SCALE 2:1

| | | | | | | | | | | | |
|--|--|-------------------------------------|---|---|-------------------------------------|---|-----------|--------------|------------------------|---|--|
| ENTER DESCRIPTION EC NO: SSL2013-0006 DRAWN BY: DRWINDEVITO CHKD BY: MCOLE APPR: DMCGOWAN B | | DESCRIPTION REV | QUALITY SYMBOLS <div>F=0</div> <div>F=0</div> <div>F=0</div> | GENERAL TOLERANCES (UNLESS SPECIFIED) | | DIMENSION STYLE MM ONLY | | SCALE 2:1 | DESIGN UNITS METRIC | THIRD ANGLE PROJECTION <div><div></div><div></div></div> | |
| | | | | <div>mm</div> <div>INCH</div> | <div>DRAWN BY</div> <div>DATE</div> | TITLE CITIZEN COB SERIES CLL040-CLL050 HOLDER ASSEMBLY | | | | | |
| 4 PLACES ± --- ± --- | <div>CHECKED BY</div> <div>DATE</div> | | | | | | | | | | |
| 3 PLACES ± --- ± --- | <div>MCOLE</div> <div>2012/05/15</div> | <div>molex</div> MOLEX INCORPORATED | | | | | | | | | |
| 2 PLACES ± 0.13 ± --- | <div>APPROVED BY</div> <div>DATE</div> | | | | | | | | | | |
| 1 PLACE ± 0.25 ± --- | ANGULAR ±1/2° | | MATERIAL NO. | | DOCUMENT NO. | | SHEET NO. | | | | |
| DRAFT WHERE APPLICABLE MUST REMAIN WITHIN DIMENSIONS | | SEE CHART | | SD-180416-001 | | | | 1 OF 4 | | | |
| | | SIZE B | | THIS DRAWING CONTAINS INFORMATION THAT IS PROPRIETARY TO MOLEX INCORPORATED AND SHOULD NOT BE USED WITHOUT WRITTEN PERMISSION | | | | | | | |

ILLUSTRATION OF CLL040 LED WITH TWO HOLDER ASSEMBLIES - NO CAP



RECOMMENDED MOUNTING DIMENSIONS



ISOMETRIC VIEW
Scale 1:1

SHEET 2 SCALE 1:1



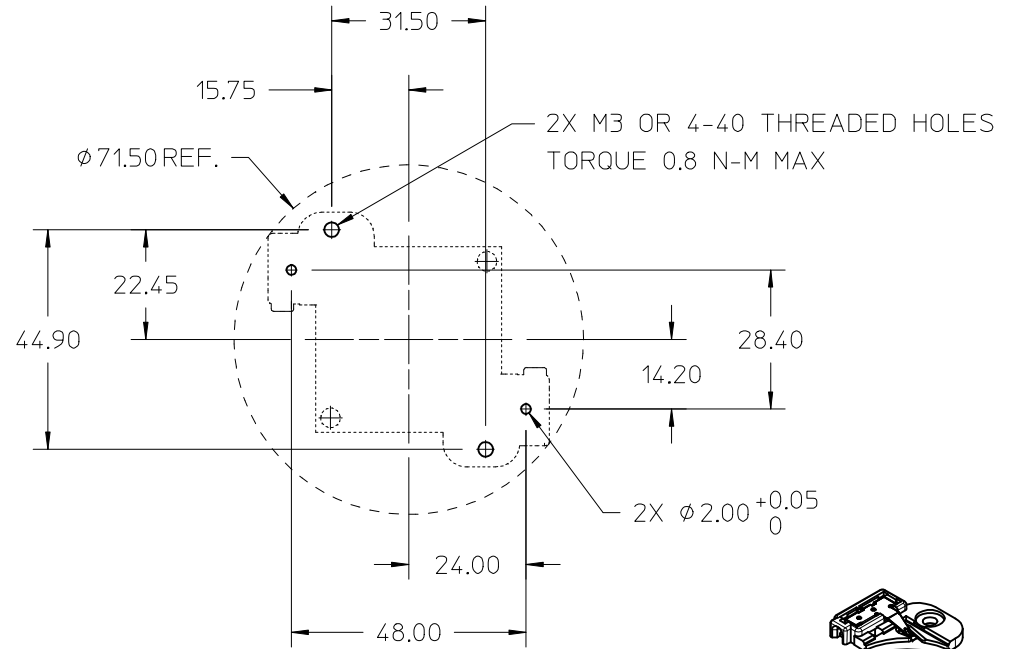
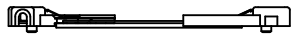
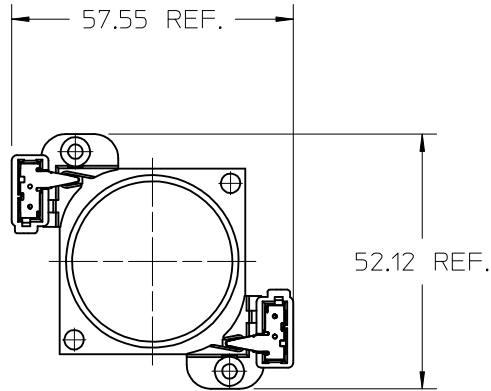
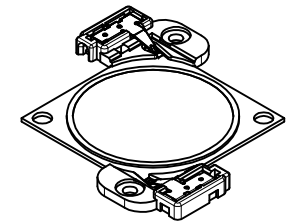
| | | | | | | | | | | | | | | |
|--|--|---------------|-------------|---|--|--------|----------------------------|-------------------|--|--|--|--|--------------|---------------------|
| ENTER DESCRIPTION EC NO: SSL2013-0006 DRAWN: MDEVITO 2012/06/06 CHKD: MCOLE 2012/06/06 APPR: DMCOWAN 2012/08/06 B | | | DESCRIPTION | QUALITY SYMBOLS <div>▽=0</div> <div>▽=0</div> <div>▽=0</div> | GENERAL TOLERANCES (UNLESS SPECIFIED) | | DIMENSION STYLE MM ONLY | | SCALE 1:1 | DESIGN UNITS METRIC |  THIRD ANGLE PROJECTION | | | |
| | | | | | | mm | INCH | DRAWN BY MCOLE | DATE 2012/01/30 | TITLE CITIZEN COB SERIES CLL040-CLL050 HOLDER ASSEMBLY <div> MOLEX INCORPORATED</div> | | | | |
| | | | | | 4 PLACES | ± --- | ± --- | CHECKED BY | DATE 2012/05/15 | | | | | |
| | | | | | 3 PLACES | ± --- | ± --- | APPROVED BY | | | | | DATE | |
| | | | | | 2 PLACES | ± 0.13 | ± --- | MATERIAL NO. | | | | | DOCUMENT NO. | SHEET NO. 2 OF 4 |
| | | 1 PLACE | ± 0.25 | ± --- | SEE CHART | | SD-180416-001 | | | | | | | |
| | | ANGULAR ±1/2° | | | DRAFT WHERE APPLICABLE MUST REMAIN WITHIN DIMENSIONS | | SIZE B | | THIS DRAWING CONTAINS INFORMATION THAT IS PROPRIETARY TO MOLEX INCORPORATED AND SHOULD NOT BE USED WITHOUT WRITTEN PERMISSION | | | | | |

ILLUSTRATION OF CLL050 LED WITH TWO ASSEMBLIES - NO CAP



RECOMMENDED MOUNTING DIMENSIONS



ISOMETRIC VIEW
Scale 1:1

SHEET 3 SCALE 1:1

| | | | | | | | | | | | | |
|---|-------------|---|--|--------|----------------------------|-------------------|--------------------|---|------------------------|---------------------|--|--|
| ENTER DESCRIPTION EC NO: SSL2013-0006 DRAWN: MDEVITO 2012/06/06 CHKD: MCOLE 2012/06/06 APPR: DMCCOWAN 2012/08/06 REV | DESCRIPTION | QUALITY SYMBOLS $\nabla_F=0$ $\nabla_F=0$ $\nabla_F=0$ | GENERAL TOLERANCES (UNLESS SPECIFIED) | | DIMENSION STYLE MM ONLY | | SCALE 1:1 | DESIGN UNITS METRIC | THIRD ANGLE PROJECTION | | | |
| | | | | mm | INCH | DRAWN BY MCOLE | DATE 2012/01/30 | TITLE CITIZEN COB SERIES CLL040-CLL050 HOLDER ASSEMBLY | | | | |
| | | | 4 PLACES | ± --- | ± --- | CHECKED BY | DATE | | | | | |
| | | | 3 PLACES | ± --- | ± --- | MCOLE | 2012/05/15 | MOLEX INCORPORATED | | | | |
| | | | 2 PLACES | ± 0.13 | ± --- | APPROVED BY | DATE | | | | | |
| | | | 1 PLACE | ± 0.25 | ± --- | MATERIAL NO. | | DOCUMENT NO. | | SHEET NO. 3 OF 4 | | |
| | | | ANGULAR ±1/2° | | | | | | | | | |
| | | | DRAFT WHERE APPLICABLE MUST REMAIN WITHIN DIMENSIONS | | | SEE CHART | | SD-180416-001 | | | | |
| | | | | | | SIZE B | | THIS DRAWING CONTAINS INFORMATION THAT IS PROPRIETARY TO MOLEX INCORPORATED AND SHOULD NOT BE USED WITHOUT WRITTEN PERMISSION | | | | |

10

9

8

7

6

5

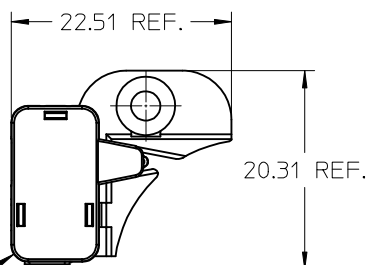
4

3

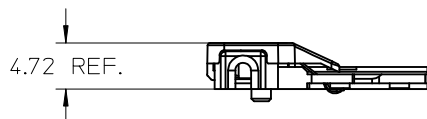
2

1

HOLDER ASSEMBLY - CAP WITH TAB

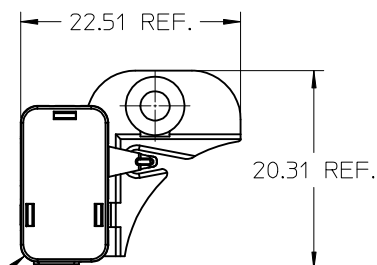


CAP WITH TAB
P/N 180417-0001
(SEE NOTE 7)

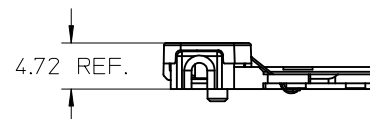


ISOMETRIC VIEW
Scale 1:1

HOLDER ASSEMBLY - CAP WITHOUT TAB



CAP WITHOUT TAB
P/N 180417-0002
(SEE NOTE 7)



ISOMETRIC VIEW
Scale 1:1

| | | | | | | | | | | | | | | | | |
|---|--|--|--------------------|--|--|--|---------------------|----------------------------|--------------------|--------------|---|---------------------------|--|--|-----------|--|
| ENTER DESCRIPTION EC NO: SSL2013-0006 DRAWN:DEVITO 2012/06/06 CHKD:MCOLE 2012/06/06 APPR:DMCGOWAN 2012/08/06 B | | | DESCRIPTION REV | QUALITY SYMBOLS F=0 F=0 F=0 | GENERAL TOLERANCES (UNLESS SPECIFIED) | | | DIMENSION STYLE MM ONLY | | SCALE 2:1 | DESIGN UNITS METRIC | THIRD ANGLE PROJECTION | | | | |
| | | | | | | | DRAWN BY MCOLE | | DATE 2012/01/30 | | TITLE CITIZEN COB SERIES CLL040-CLL050 HOLDER ASSEMBLY | | | | | |
| | | | | | | | CHECKED BY MCOLE | | DATE 2012/05/15 | | | | | | | |
| | | | | | | | APPROVED BY | | DATE | | molex | | | | | |
| | | | | | | | MATERIAL NO. | | DOCUMENT NO. | | | | | | SHEET NO. | |
| | | | | | | | SEE CHART | | SD-180416-001 | | | | | | 4 OF 4 | |
| DRAFT WHERE APPLICABLE MUST REMAIN WITHIN DIMENSIONS | | | | | THIS DRAWING CONTAINS INFORMATION THAT IS PROPRIETARY TO MOLEX INCORPORATED AND SHOULD NOT BE USED WITHOUT WRITTEN PERMISSION | | | | | | | | | | | |

9

8

7

6

5

4

3

2

1