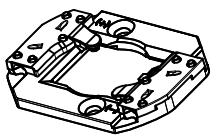
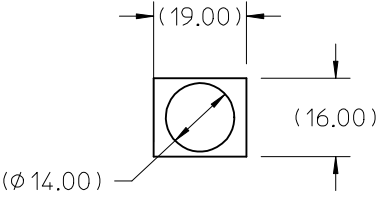
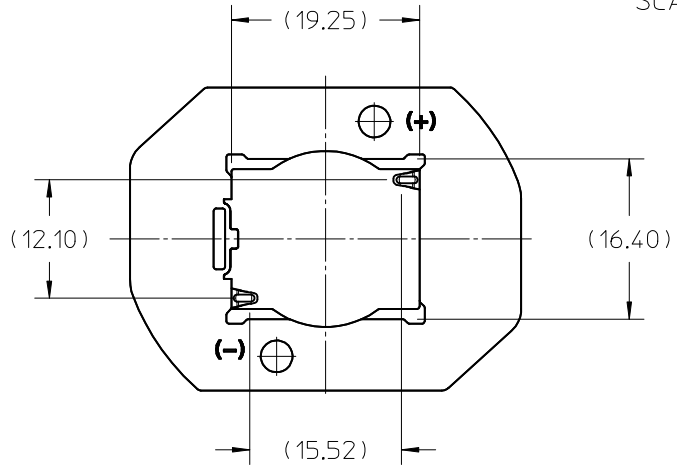
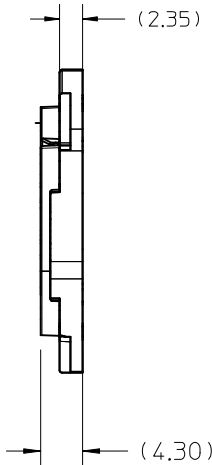
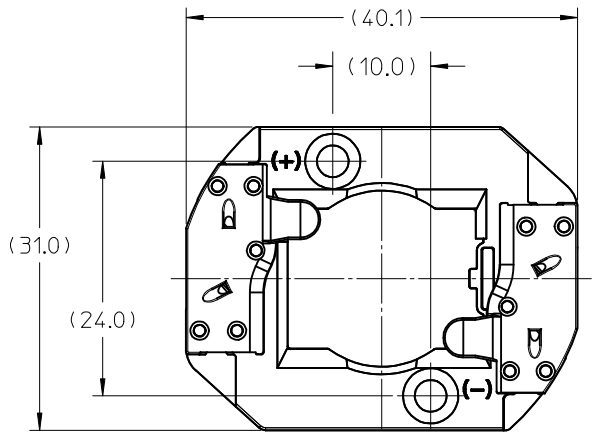


10	9	8	7	6	5	4
PART NUMBER	DESCRIPTION			MATERIAL		COLOR
180580-0001	NICHIA L COB LED HOLDER ASSEMBLY - NYLON			POLYAMIDE, GLASS FILLED		NATURAL
180580-0101	NICHIA L COB LED HOLDER ASSEMBLY - PBT			POLYESTER, GLASS FILLED		WHITE



ISO VIEW
SCALE 1:1

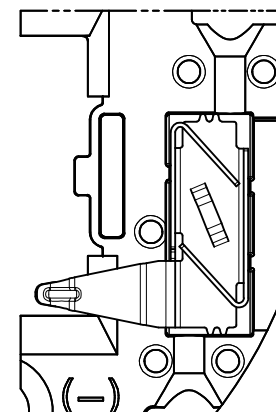
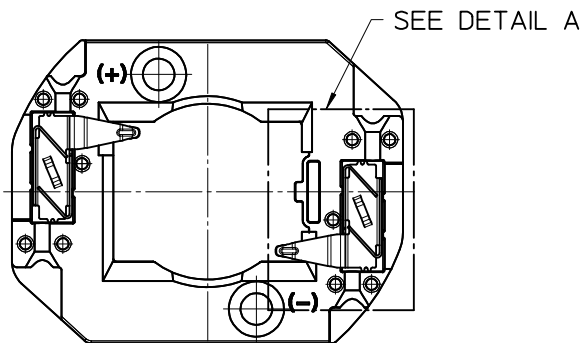


COB LED
SCALE 1:1

- 1) MATERIALS: HOUSIG AND CAPS: SEE CHART
- 2) WIRE TRAP TERMINALS: COPPER ALLOY
 - a. FINISH: LED CONTACT: GOLD OVER NICKEL, WIRE TRAP: TIN OVER NICKEL
- 3) THIS PRODUCT IS ELV AND ROHS COMPLIANT
- 4) APPLICABLE WIRE GAUGE - 18, 20, OR 22 AWG
 - a. SOLID WIRE IS PREFERRED
 - b. IF STRANDED WIRE IS USED, PRE-TINNED IS RECOMMENDED
 - c. 1 cm STRIP LENGTH IS RECOMMENDED
- 5) MOUNT HOLDER USING M3 OR 4-40 SCREWS (2), TORQUE: 0.4 MIN TO 0.8 MAX NEWTON METERS
- 6) UL RECOGNITION TO UL496; c-UL RECOGNITION TO CSA-C22.2 NO. 43 (2008) - RATED 600V UL FILE NUMBER: E345583
- 7) DIMENSIONS IN PARENTHESES (XX.XX) ARE FOR REFERENCE ONLY

RELEASED EC NO: SSL2014-0052 IDRWIN/MCOLE CHKD: APPR:DMCGOWAN REV	DESCRIPTION 2013/06/18 2013/11/21	QUALITY SYMBOLS F=0 F=0 F=0	GENERAL TOLERANCES (UNLESS SPECIFIED)		DIMENSION STYLE MM ONLY		SCALE 2:1	DESIGN UNITS METRIC	THIRD ANGLE PROJECTION		
				mm	INCH	DRAWN BY MDEVITO	DATE 2012/09/06	TITLE NICHIA L TYPE COB LED HOLDER ASSEMBLY			
			4 PLACES	± ---	± ---	CHECKED BY	DATE				
			3 PLACES	± ---	± ---	CCARRANZA	2012/09/06				
			2 PLACES	± 0.13	± ---	APPROVED BY	DATE	molex			
1 PLACE	± 0.25	± ---	DMCGOWAN	2012/09/13							
			ANGULAR ±1/2°		MATERIAL NO.		DOCUMENT NO.		SHEET NO.		
			DRAFT WHERE APPLICABLE MUST REMAIN WITHIN DIMENSIONS		SEE CHART		SD-180580-001		1 OF 3		
					SIZE B	THIS DRAWING CONTAINS INFORMATION THAT IS PROPRIETARY TO MOLEX INCORPORATED AND SHOULD NOT BE USED WITHOUT WRITTEN PERMISSION					

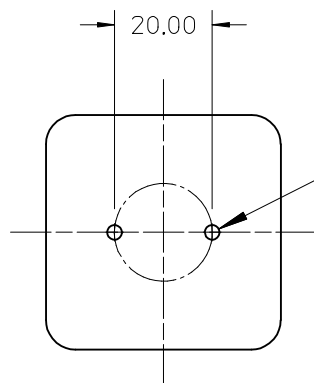
NOTE: WIRE TRAP CAPS ARE REMOVED FOR CLARITY



DETAIL A
Scale 4:1

VIEW OF TWO-WAY WIRE TRAP

WIRE TRAPS CAN ACCOMMODATE
18, 20, OR 22 GAUGE WIRE

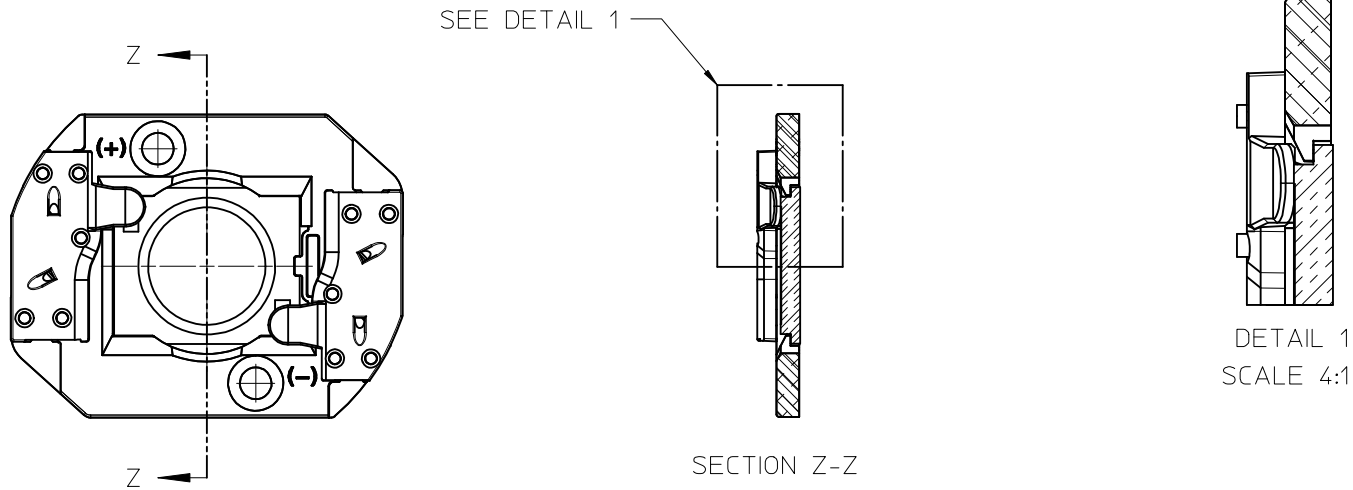


M3 OR 4-40 TAPPED HOLES (2)
TORQUE SCREWS 0.4 MIN TO
0.8 MAX NEWTON METERS

RECOMMENDED MOUNTING DIMENSIONS (NTS)

RELEASED EC NO: SSL2014-0052 DRAWN/MCOLE CHKD: 2013/06/18 APPR:DMCGOWAN 2013/11/21	DESCRIPTION REV	QUALITY SYMBOLS	GENERAL TOLERANCES (UNLESS SPECIFIED)		DIMENSION STYLE MM ONLY		SCALE 2:1	DESIGN UNITS METRIC	THIRD ANGLE PROJECTION		
		$\nabla=0$ $\nabla=0$ $\nabla=0$		mm	INCH	DRAWN BY MDEVITO	DATE 2012/09/06	TITLE NICHIA L TYPE COB LED HOLDER ASSEMBLY			
			4 PLACES	\pm ---	\pm ---	CHECKED BY CCARRANZA	DATE 2012/09/06				
			3 PLACES	\pm ---	\pm ---						
			2 PLACES	\pm 0.13	\pm ---	APPROVED BY DMCGOWAN	DATE 2012/09/13	molex			
			1 PLACE	\pm 0.25	\pm ---						
			0 PLACE	\pm ---	\pm ---						
ANGULAR $\pm 1/2^\circ$			MATERIAL NO.		DOCUMENT NO.		SHEET NO.				
DRAFT WHERE APPLICABLE MUST REMAIN WITHIN DIMENSIONS			SEE CHART		SD-180580-001		2 OF 3				
			SIZE B	THIS DRAWING CONTAINS INFORMATION THAT IS PROPRIETARY TO MOLEX INCORPORATED AND SHOULD NOT BE USED WITHOUT WRITTEN PERMISSION							

ILLUSTRATION OF HOLDER MATED WITH LED



ENTER DESCRIPTION EC NO: SSL2014-0052 DRAWN:MCOLE 2013/06/18 CHKD: APPR:DMCGOWAN 2013/11/21	QUALITY SYMBOLS <div><div>F_A=0</div><div>F_B=0</div><div>F_C=0</div></div>	GENERAL TOLERANCES (UNLESS SPECIFIED)		DIMENSION STYLE MM ONLY		SCALE 2:1	DESIGN UNITS METRIC	THIRD ANGLE PROJECTION		
			mm	INCH	DRAWN BY MDEVITO	DATE 2012/09/06	TITLE NICHIA L TYPE COB LED HOLDER ASSEMBLY			
		4 PLACES	± ---	± ---	CHECKED BY	DATE				
		3 PLACES	± ---	± ---	CCARRANZA	2012/09/06	molex			
		2 PLACES	± 0.13	± ---	APPROVED BY	DATE				
		1 PLACE	± 0.25	± ---	DMCGOWAN	2012/09/13				
		0 PLACE	± ---	± ---	MATERIAL NO.		DOCUMENT NO.		SHEET NO.	
DRAFT WHERE APPLICABLE MUST REMAIN WITHIN DIMENSIONS			SEE CHART		SD-180580-001				3 OF 3	
REV				SIZE B	THIS DRAWING CONTAINS INFORMATION THAT IS PROPRIETARY TO MOLEX INCORPORATED AND SHOULD NOT BE USED WITHOUT WRITTEN PERMISSION					