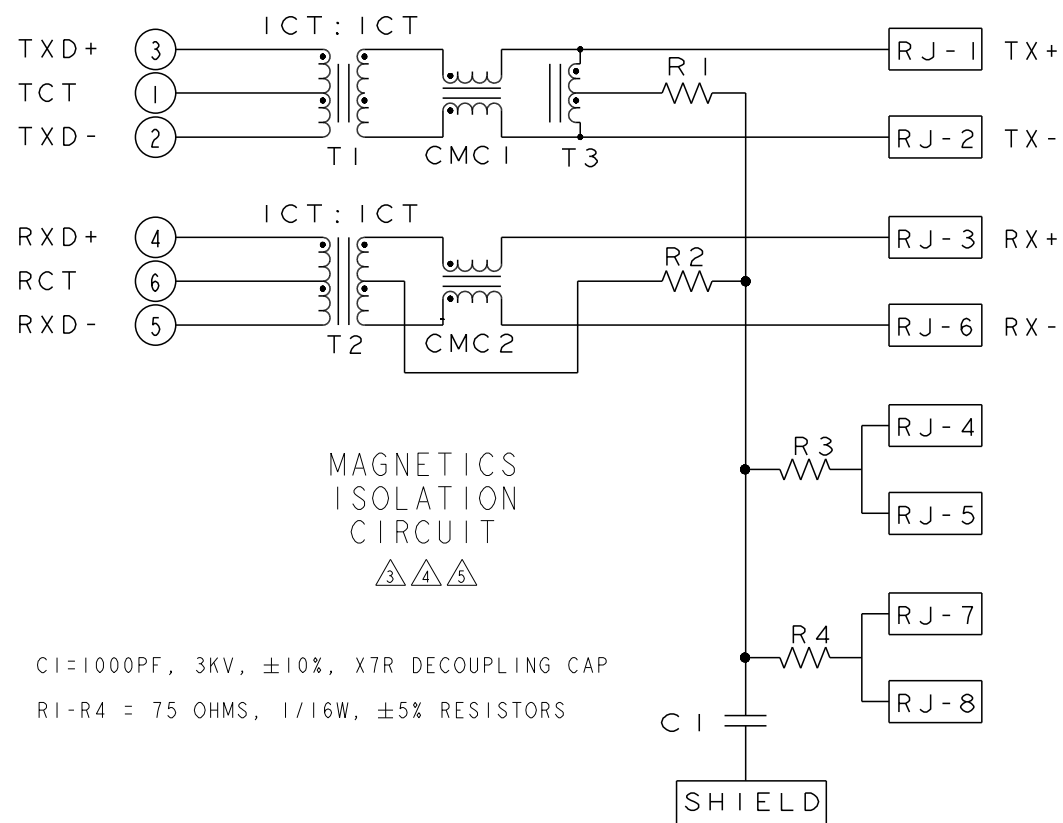
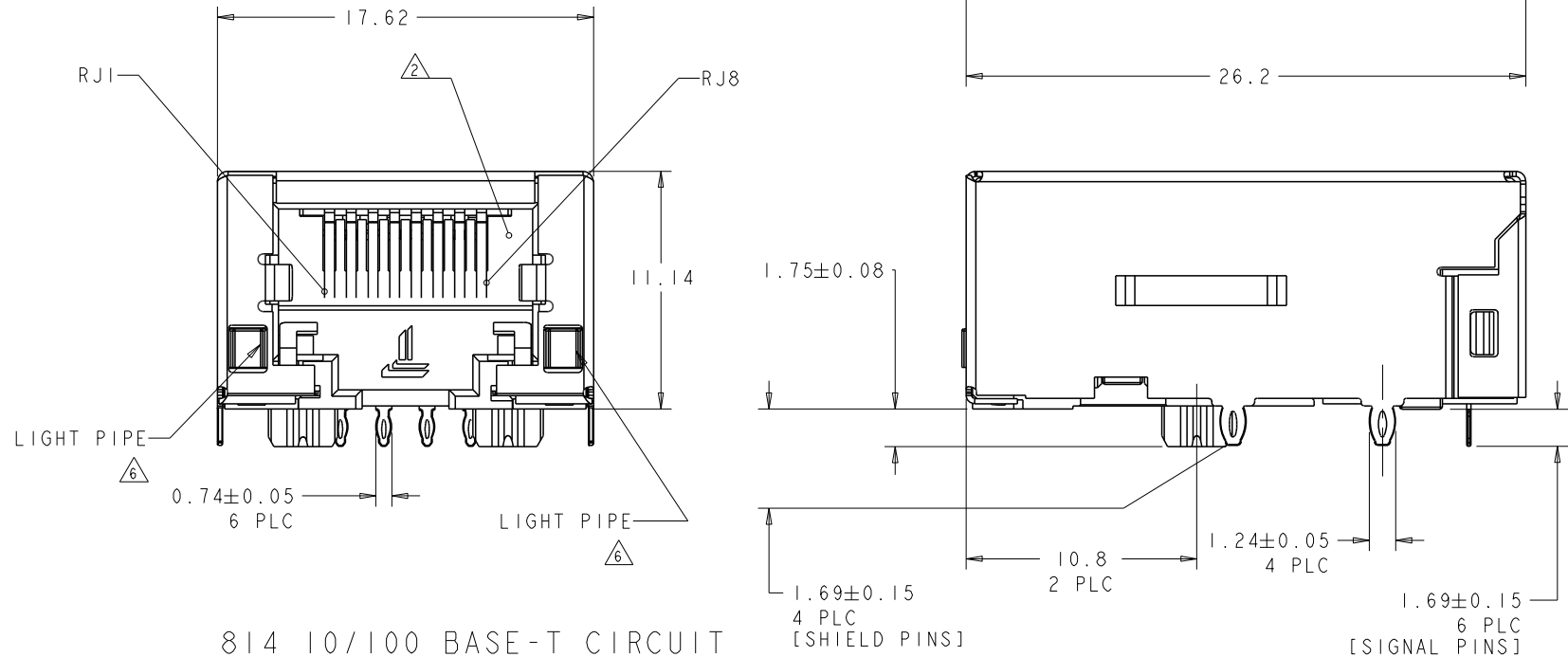
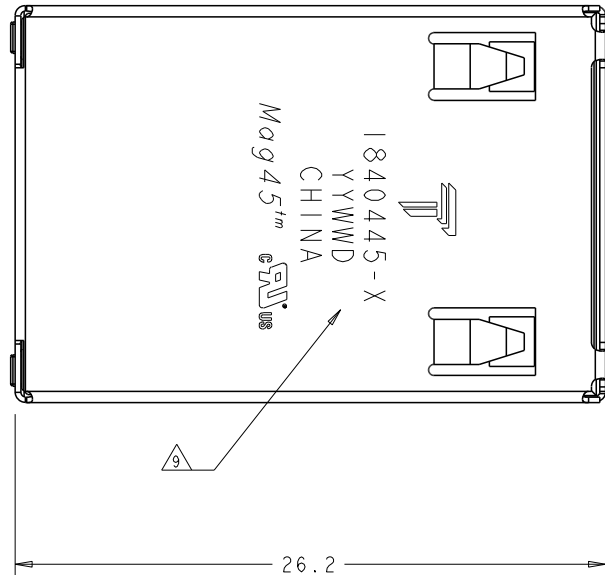
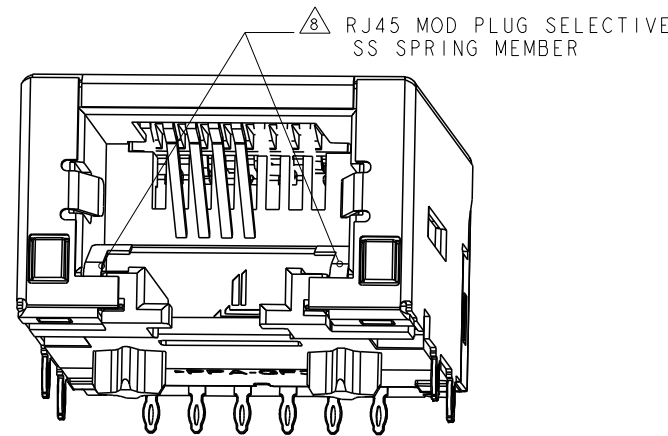


REVISIONS					
P	LTR	DESCRIPTION	DATE	OWN	APVD
	D	LOGO CHANGE	25APR2013	TY	KZ



△ MATERIALS:  
 -HOUSING: HIGH TEMPERATURE NYLON, BLACK, UL 94V-0  
 -SHIELD: 0.25mm THICK, BRASS PREPLATED WITH 0.76  $\mu$ m MIN SEMI-BRIGHT NICKEL; POST-DIPPED  
 WITH 2  $\mu$ m MIN SAC 305 ALLOY LEAD FREE SOLDER (TIN PRIMARY, 3% SILVER, 0.5% COPPER)  
 -CONTACT TAILS: 0.20mm THICK, PHOSPHOR BRONZE, 1.27  $\mu$ m MIN OVERALL NICKEL UNDERPLATE,  
 3  $\mu$ m MIN TIN PLATE  
 -MOD JACK CONTACTS: 0.25mm THICK, PHOSPHOR BRONZE, 1.27  $\mu$ m MIN OVERALL NICKEL  
 UNDERPLATE, WITH 0.76  $\mu$ m MIN LOCALIZED GOLD PLATE AT PLUG INTERFACE  
 -LIGHT PIPE: POLYETHER SULFONE

2 RJ45 JACK CAVITY CONFORMS TO FCC RULES AND REGULATIONS PART 68, SUB-PART F.

③ MAGNETICS:  
-APPLICATION: 10/100 BASE-T  
-IMPEDANCE: 100Ω  
-TURNS RATIO (CHIP:CABLE): TX 1:1, RX: 1:1  
-OPEN CIRCUIT INDUCTANCE (OCL): 350μH (MIN) @100KHz, 0.1 VRMS  
8 mA DC BIAS FROM 0°C TO 70°C, TX AND RX  
-PERFORMANCE @25°C:

FREQUENCY	RETURN LOSS (dB MIN) CIRCUIT IMPEDANCE = 100 OHMS $\pm 15\%$
0.5 MHz-30 MHz	18
30.1 MHz-60 MHz	$18-20 \log(f/30)$ f IS FREQUENCY IN MHZ
60.1 MHz-80 MHz	12

FREQUENCY	INSERTION LOSS (dB MAX)	COMMON MODE REJECTION RATIO (dB MIN)	CROSSTALK ATTENUATION (dB MIN)
0.5 MHz - 40 MHz	1.1	30	35
40.1 MHz - 100 MHz			$33 - 20 \log(f/50)$ (f IS FREQUENCY IN MHz)

- ISOLATION VOLTAGE: COMPLIES WITH IEEE802.3.2002, PARA 23.5.1.1, ITEM a AND b.

4 THE MAGNETICS ARE ASYMMETRICAL, AND DO NOT SUPPORT AUTO-MDIX.

△5 OPERATING TEMPERATURE: FROM 0°C TO +70°C

△ LIGHT PIPES ARE USED TO TRANSMIT LIGHT OF SMD LED'S MOUNTED ON CUSTOMER BOARD.

7 ALL DIMENSIONS ARE NOMINAL UNLESS OTHERWISE NOTED.



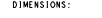


8 RJ45 MOD PLUG SELECTIVE - THIS CONNECTOR UTILIZES STEEL SPRING MEMBER WHICH PREVENTS THE INSERTION OF A RJ11 (6 POSITION) PLUG INTO THE JACK PORT, WHILE ALLOWING A RJ45 ( 8 POSITION) PLUG TO MATE FREELY.

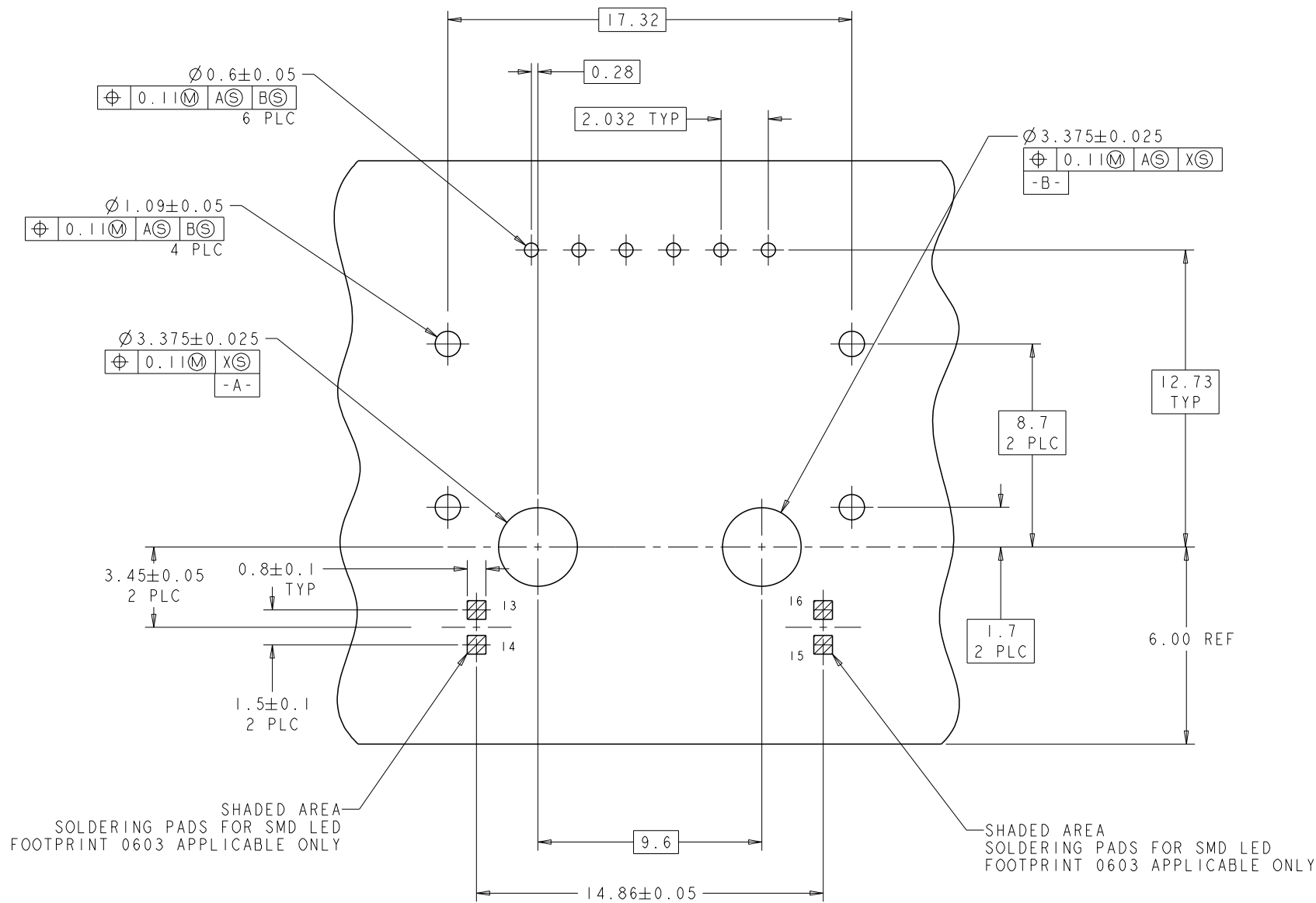
WARNING: THIS FEATURE WAS DEVELOPED FOR TYPICAL PLUG INSERTION FORCES.  
EXCESSIVE INSERTION FORCE MAY OVERCOME THE SELECTIVE FEATURES AND DAMAGE THE CONNECTOR.

9 TRP CONNECTOR LOGO, TRADEMARK, PART NUMBER, DATE CODE, COUNTRY OF ORIGIN, AND AGENCY APPROVAL MARKING IN APPROXIMATE LOCATION SHOWN

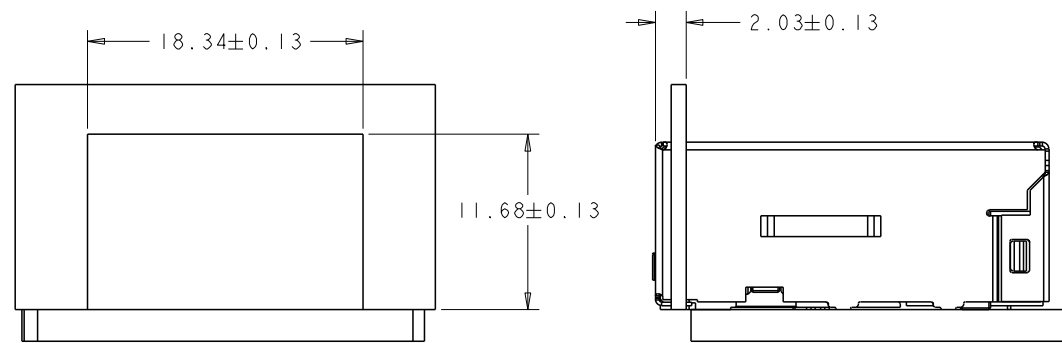
10 1840445-1 SHOWN UNLESS OTHERWISE NOTED.

TOP AND SIDES	1840445-2
NONE	1840445-1
TABS	PART NO.

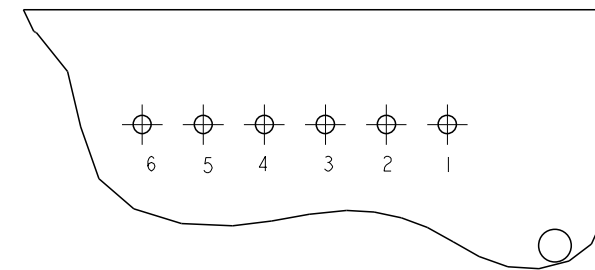
THIS DRAWING IS A CONTROLLED DOCUMENT.		DWN TOWER YU 10SEP2007 CHK KEITH ZHU 10SEP2007 APPD TENDY XIONG 10SEP2007		 TRP connector Dongguan China	
DIMENSIONS: mm		TOLERANCES UNLESS OTHERWISE SPECIFIED: D PLC $\pm .1$ P PLC $\pm .05$  S PLC $\pm .1$ T PLC $\pm .1$ ANGLES $\pm .1$		PRODUCT SPEC 108-104009 APPLICATION SPEC	
		WEIGHT -		NAME IXI M4G45(TM), MODULAR JACK, PRESS FIT, 814 SERIES 10/100 CIRCUIT	
MATERIAL : 		FINISH : 		SITE CAGE CODE DRAWING NO A1 C=1840445	
		CUSTOMER DRAWING		SCALE NTS SHEET 1 OF 2 REV D	



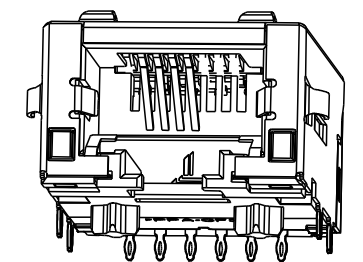
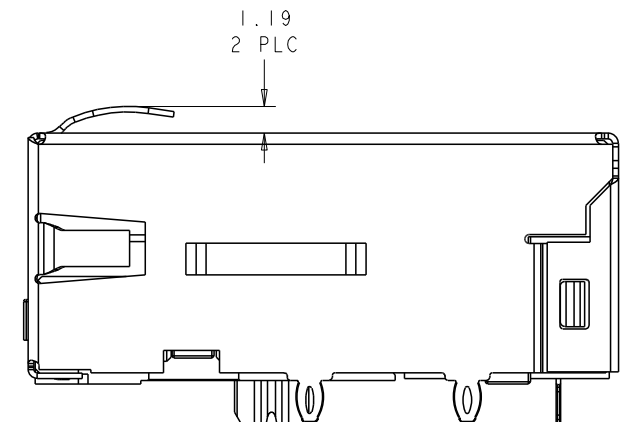
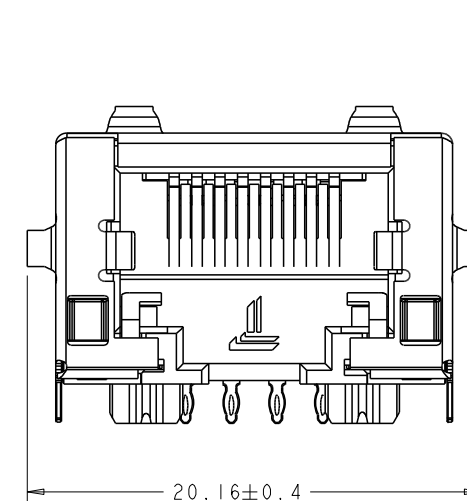
SUGGESTED PCB LAYOUT  
(COMPONENT SIDE)




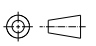
SUGGESTED PANEL OPENING



PIN DESIGNATIONS



SCALE 4:1

THIS DRAWING IS A CONTROLLED DOCUMENT.		OWN TOWER YU 10SEP2007	 TRP connector Dongguan China	
DIMENSIONS: mm		CHK KEITH ZHU 10SEP2007		
	TOLERANCES UNLESS OTHERWISE SPECIFIED:	APVD TEDDY XLONG 10SEP2007	PRODUCT SPEC 108-104009	NAME IXI MAG45(TM), MODULAR JACK, PRESS FIT, 814 SERIES 10/100 CIRCUIT
			APPLICATION SPEC	SIZE A1
MATERIAL :	FINISH :	WEIGHT -	CAGE CODE C=1840445	RESTRICTED TO -
CUSTOMER DRAWING			SCALE NTS	SHEET 2 OF 2
			REV D	