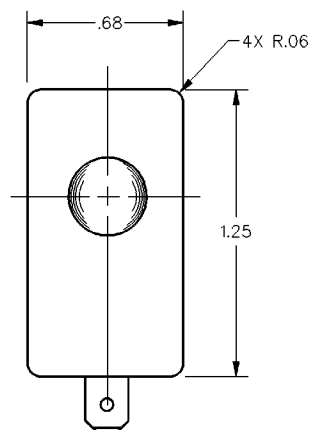
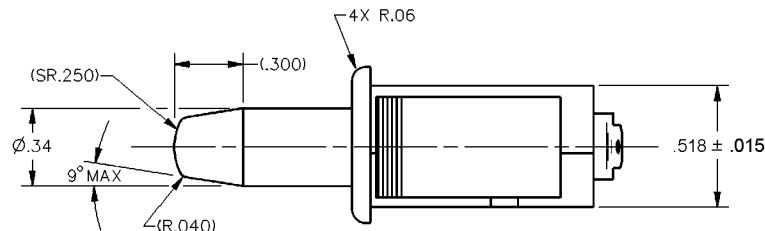


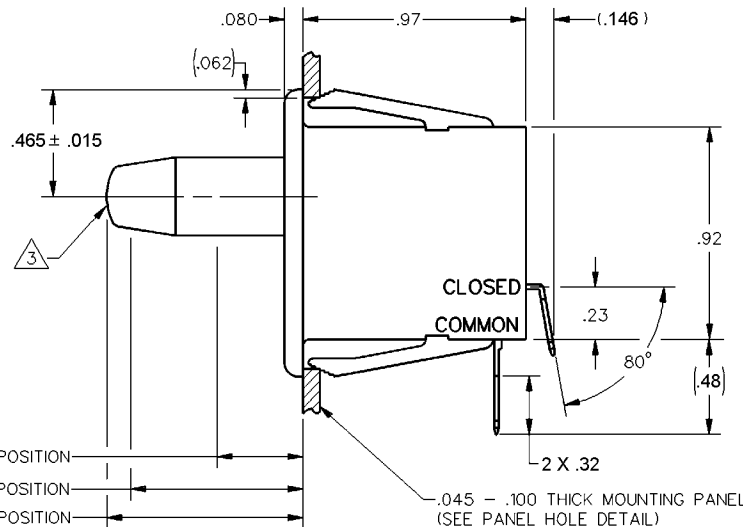
HONEYWELL  
PART NUMBER

1DM5

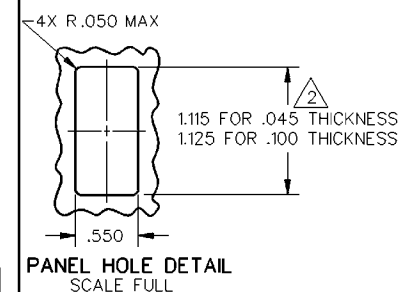
REV	DOCUMENT	CHANGED BY	CHECK
A	0015967	LKM 27 SEP 05	VA



.375 MAX FULL OVERTRAVEL POSITION  
.750 ± .060 OPERATING POSITION  
.880 ± .050 FREE POSITION

2X .250 X .032 QUICK  
CONNECT TERMINAL

STOP CONTACT

NORMALLY CLOSED  
TERMINALCOMMON  
TERMINAL

## CHARACTERISTICS

OPERATING FORCE - - - - - 15 OZ MAX  
RELEASE FORCE - - - - - 3 OZ MIN  
DIFFERENTIAL TRAVEL - - .045 APPROX  
OVERTRAVEL - - - - - .375 MIN  
PLUNGER FORCE AT .375 OVERTRAVEL  
21 OZ MAX

## ELECTRICAL DATA

CONTACT ARRANGEMENT  
S P N C

L181

10A 1/2HP 125, 250 OR 277 VAC



## NOTES

1 - GREY PLASTIC CASE AND PLUNGER WITH BLACK COVER.

2 - NOMINAL CUTOUT DIMENSION FOR PANELS BETWEEN .045 AND .100 SHOULD BE  
INTERPOLATED BETWEEN 1.115 AND 1.125

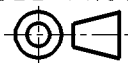
3 - PUSH TO OPERATE - MOMENTARY

DESIGN UNITS: INCH

TOLERANCES UNLESS NOTED:

ONE PLACE .X ± 0.030  
TWO PLACE .XX ± 0.015  
THREE PLACE .XXX ± 0.005  
ANGLES ± 5

THIRD ANGLE PROJECTION



DRAWN

LKM

27SEP05

CHECK

VA

27SEP05

THIS DRAWING COVERS A PROPRIETARY ITEM  
AND IS THE PROPERTY OF HONEYWELL.  
THIS DRAWING IS NOT TO BE COPIED OR USED  
WITHOUT THE PERMISSION OF HONEYWELL.

INTERPRET PER ANSI Y14.5M-1982  
OTHER HONEYWELL ENGINEERING  
STANDARDS MAY APPLY

RASTER

Honeywell

TITLE

SWITCH - BASIC

SIZE

A

TYPE

I

DRAWING NAME

1DM5

REV

A

SCALE 2:1

SHEET 1 OF 1