

# MICRO SWITCH

FREEPORT ILLINOIS, U.S.A  
A DIVISION OF HONEYWELL  
FED. MFG. CODE 91929

## ASSEMBLY- PUSHBUTTON SWITCH

CATALOG LISTING  
1PB551-T

1PB551-T

M

DRAWING  
NUMBER

36

ISSUE

REPLACES

RELEASE NO. PR-9474

CHECK

### REVISIONS

A WAS ETS  
PR-9474  
G J W  
17 NOV. 80

B C065556

J A P  
22 MAR 89

CHECK

18 NOV 80

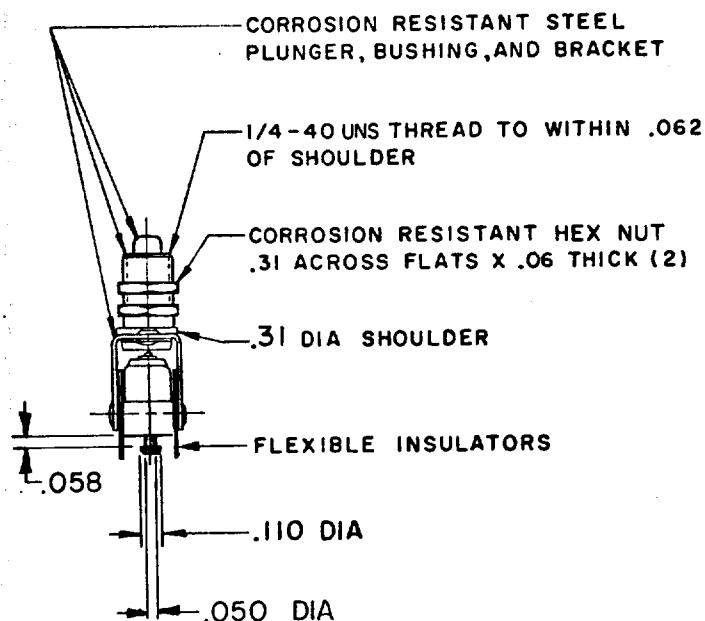
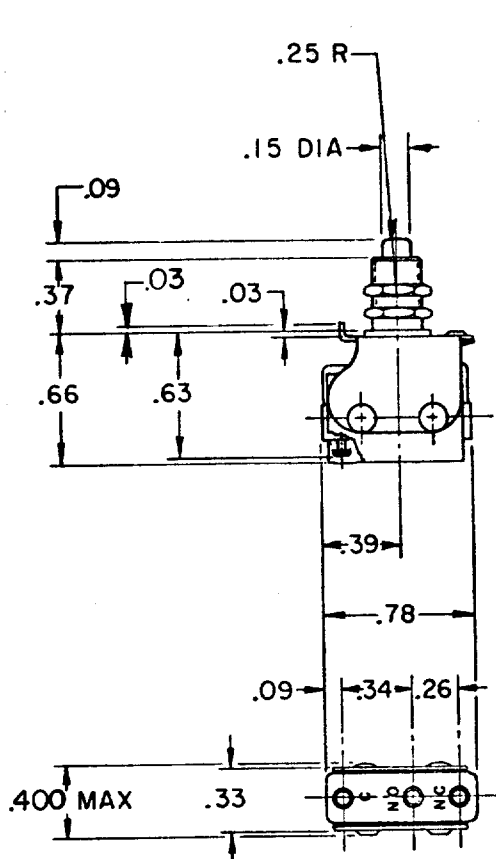
C E B

CHECK

17 NOV 80

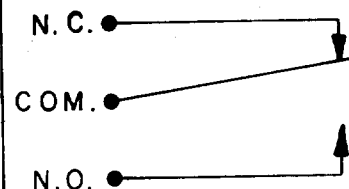
G J W

FO-52848-A



### NOTES

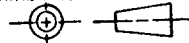
- 1 UNIT INCLUDES CAT. LIST. "SM" TYPE BASIC SWITCH
- 2 TERMINALS ARE PLATED FOR SOLDERING
- 3 RECOMMENDED FOR MANUAL OPERATION ONLY
- 4 BASIC SWITCH HAS 24K SOLID GOLD CONTACTS



CIRCUIT DIAGRAM

THIS DRAWING COVERS A PROPRIETARY ITEM AND IS THE PROPERTY OF MICRO SWITCH, A DIVISION OF HONEYWELL. THIS DRAWING IS NOT TO BE COPIED OR USED WITHOUT THE APPROVAL OF MICRO SWITCH.

THIRD ANGLE PROJECTION



CHARACTERISTICS		ELECTRICAL DATA		SCALE FULL																									
OPERATING FORCE-----32 OZ MAX		CONTACT ARRANGEMENT S P D T		DO NOT SCALE PRINT																									
TOTAL TRAVEL-----.080 MAX		28 VOLTS DC RATING		TOLERANCES APPLY TO DESIGN UNITS. CONVERSIONS ARE ONLY FOR REFERENCE. UNLESS NOTED, TOLERANCES ARE ±																									
		INDUCTIVE-----SEA LEVEL--1/4 AMP 50,000 FT---1/4 AMP		<table><tr><td>DIM. mm</td><td>TOL. mm/in</td><td>DIM. in</td><td>TOL. mm/in</td></tr><tr><td>NO PLACES</td><td>X</td><td>1/.04</td><td></td></tr><tr><td>ONE PLACE</td><td>X,X</td><td>0.4/.016</td><td>X,X 0.8/.03</td></tr><tr><td>TWO PLACES</td><td>X,XX</td><td>0.15/.006</td><td>X,XX 0.38/.015</td></tr><tr><td>THREE PLACES</td><td>X,XXX</td><td></td><td>X,XXX 0.13/.005</td></tr><tr><td>ANGLES</td><td></td><td></td><td></td></tr></table>		DIM. mm	TOL. mm/in	DIM. in	TOL. mm/in	NO PLACES	X	1/.04		ONE PLACE	X,X	0.4/.016	X,X 0.8/.03	TWO PLACES	X,XX	0.15/.006	X,XX 0.38/.015	THREE PLACES	X,XXX		X,XXX 0.13/.005	ANGLES			
DIM. mm	TOL. mm/in	DIM. in	TOL. mm/in																										
NO PLACES	X	1/.04																											
ONE PLACE	X,X	0.4/.016	X,X 0.8/.03																										
TWO PLACES	X,XX	0.15/.006	X,XX 0.38/.015																										
THREE PLACES	X,XXX		X,XXX 0.13/.005																										
ANGLES																													
		RESISTIVE-----SEA LEVEL--1 AMP 50,000 FT---1 AMP		<table><tr><td>SI METRIC</td><td>US CUSTOMARY</td></tr><tr><td>DESIGN UNITS <input type="checkbox"/></td><td><input checked="" type="checkbox"/></td></tr></table>		SI METRIC	US CUSTOMARY	DESIGN UNITS <input type="checkbox"/>	<input checked="" type="checkbox"/>																				
SI METRIC	US CUSTOMARY																												
DESIGN UNITS <input type="checkbox"/>	<input checked="" type="checkbox"/>																												
				WEIGHT .040 LB MAX.																									