

1XE301

M

DRAWING  
NUMBER

ISSUE

3

REPLACES

PR-11966

CHECK

CHECK

9 NOV '89

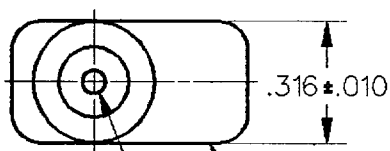
DAW

CHECK

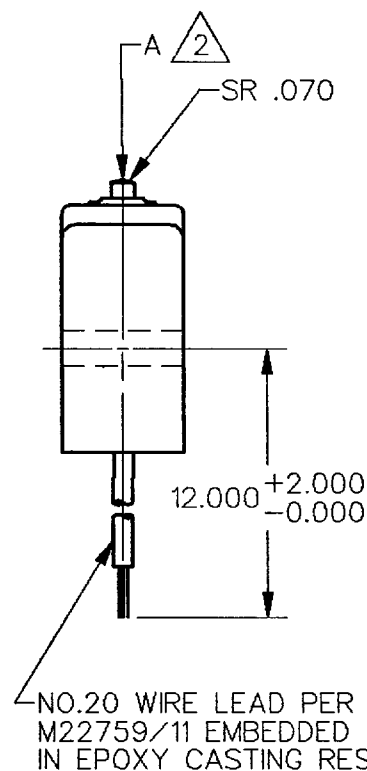
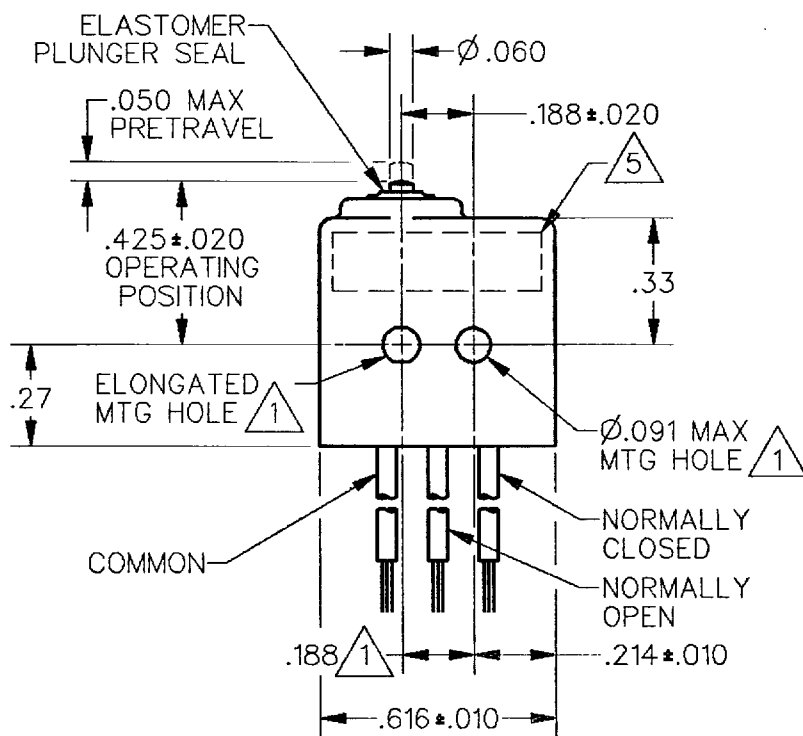
2 NOV 89

DRAWN

DDM/CAD



CORROSION RESISTANT TREATED METAL ENCLOSURE  
CORROSION RESISTANT STEEL PLUNGER

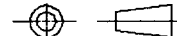


**NOTES**

- 1 MOUNTING HOLES WILL ACCEPT .087 MAX DIA PINS OR SCREWS ON .188 ± .002 CENTERS
- 2 ACTUATION IN LINE WITH ARROW "A" IS RECOMMENDED
- 3 WEIGHT OF SWITCH ONLY IS .16 OZ MAX. WEIGHT OF SWITCH WITH WIRE LEADS IS .55 OZ MAX
- 4 CONTACT MATERIAL: 24K SOLID GOLD
- 5 YELLOW MARKING IS ON BOTH SIDES OF HOUSING TO IDENTIFY THAT THIS UNIT HAS GOLD CONTACTS

THIS DRAWING COVERS A PROPRIETARY ITEM AND IS THE PROPERTY OF MICRO SWITCH, A DIVISION OF HONEYWELL. THIS DRAWING IS NOT TO BE COPIED OR USED WITHOUT THE APPROVAL OF MICRO SWITCH.

THIRD ANGLE PROJECTION



CHARACTERISTICS	ELECTRICAL DATA	SCALE 2 : 1	DO NOT SCALE PRINT
OPERATING FORCE — — — — — 5-17 OZ	CONTACT ARRANGEMENT S P D T	UNLESS OTHERWISE SPECIFIED TOLERANCES ARE ONE PLACE (.0) ±.030 TWO PLACE (.00) ±.015 THREE PLACE (.000) ±.005 ANGLES ±	
RELEASE FORCE — — — — — 4 OZ MIN	28 VOLTS DC RATING INDUCTIVE — — — — — SEA LEVEL — 1/2 AMP 50,000 FT — 1/2 AMP RESISTIVE — — — — — SEA LEVEL — 1 AMP 50,000 FT — 1 AMP		
RELEASE TRAVEL — — — — — .004 MIN			
DIFFERENTIAL TRAVEL — — — — — .005 MAX			
OVERTRAVEL — — — — — .004 MIN			
		WEIGHT	3