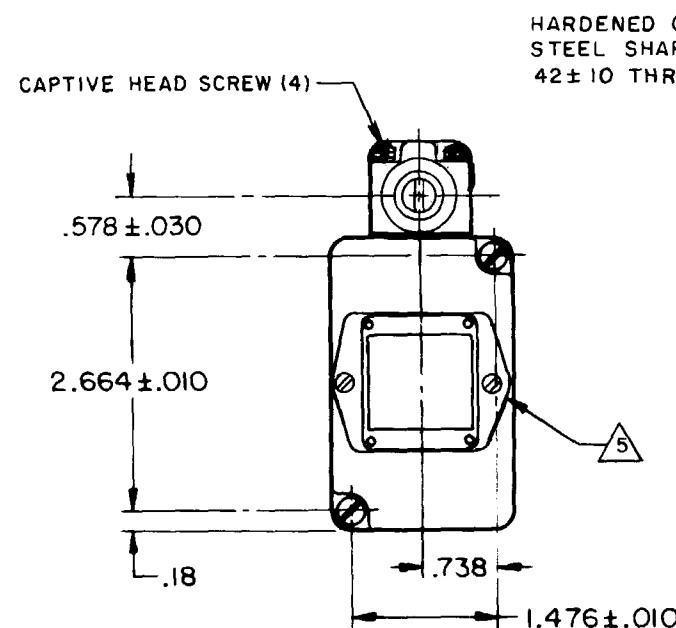
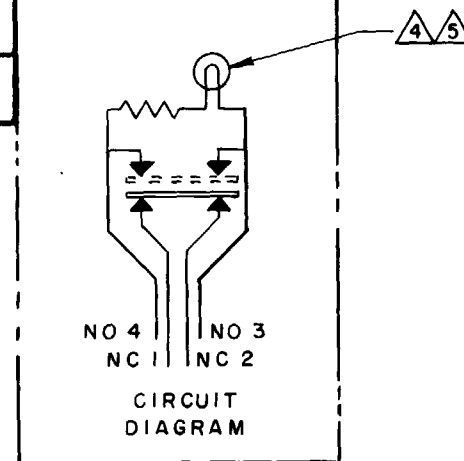
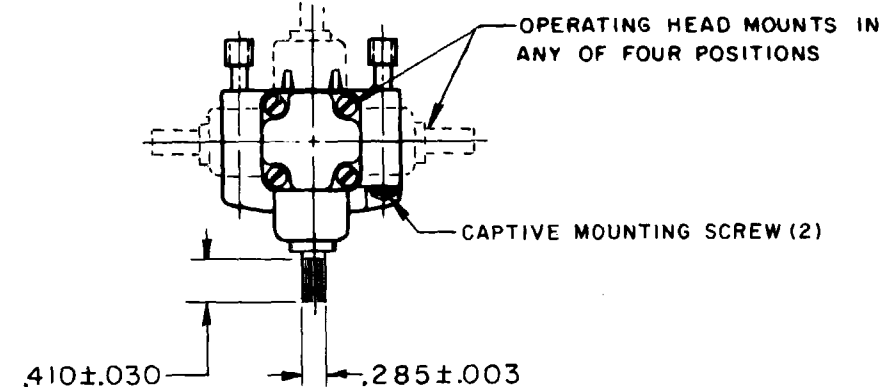
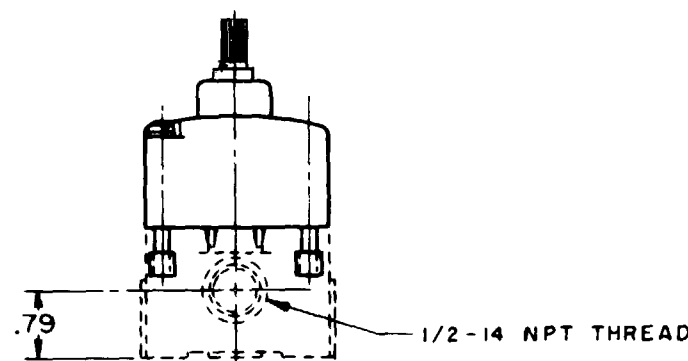
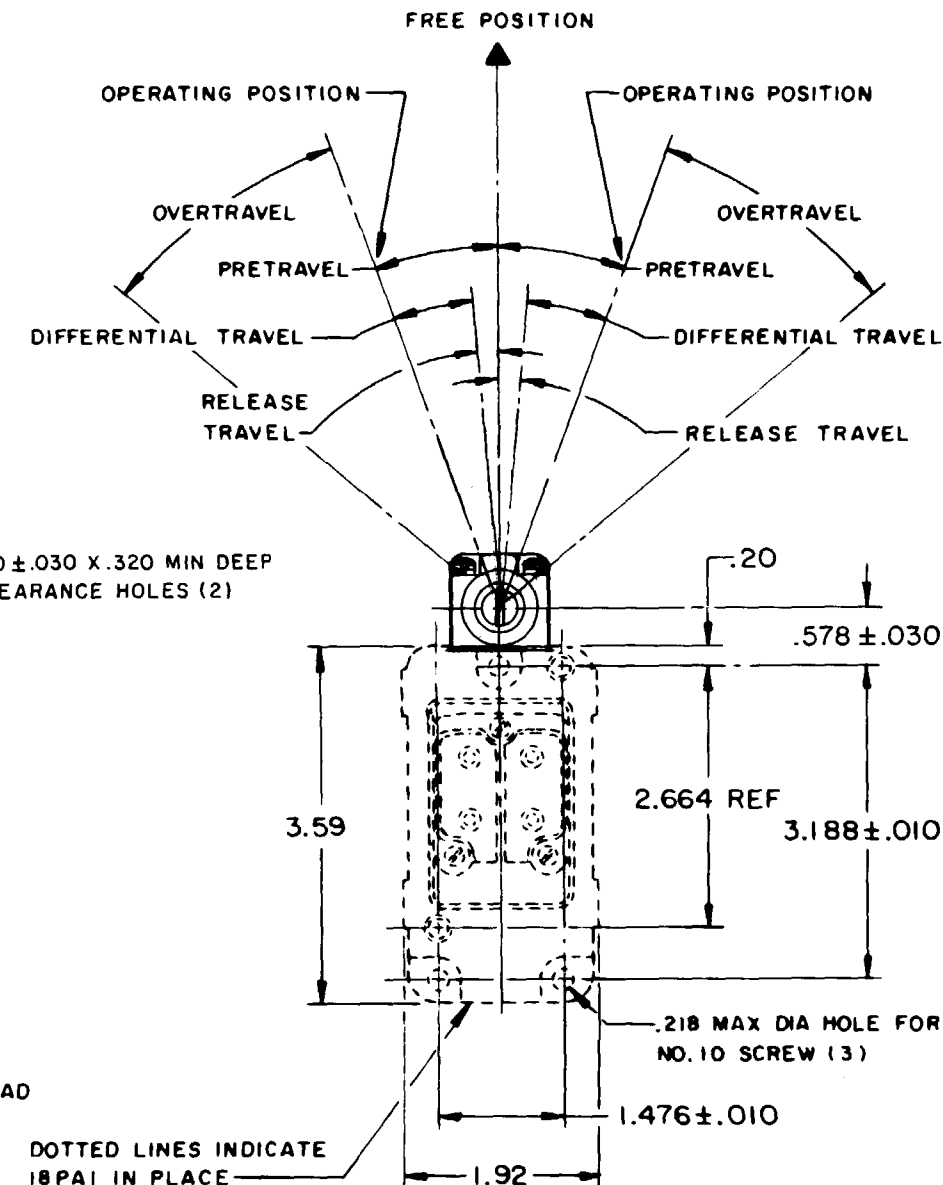
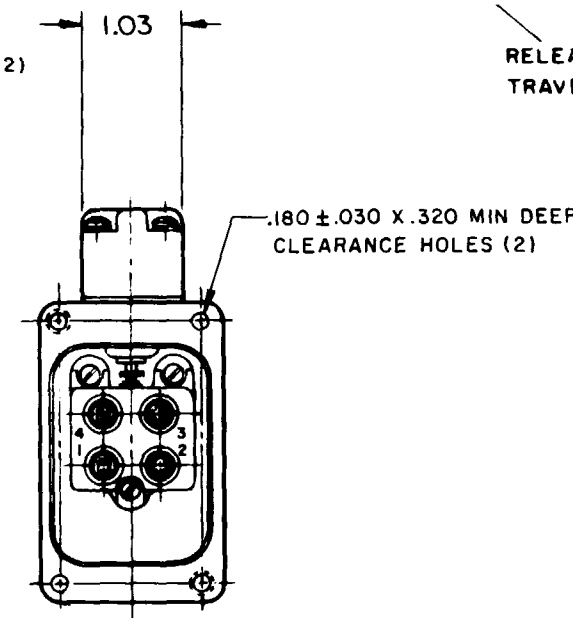
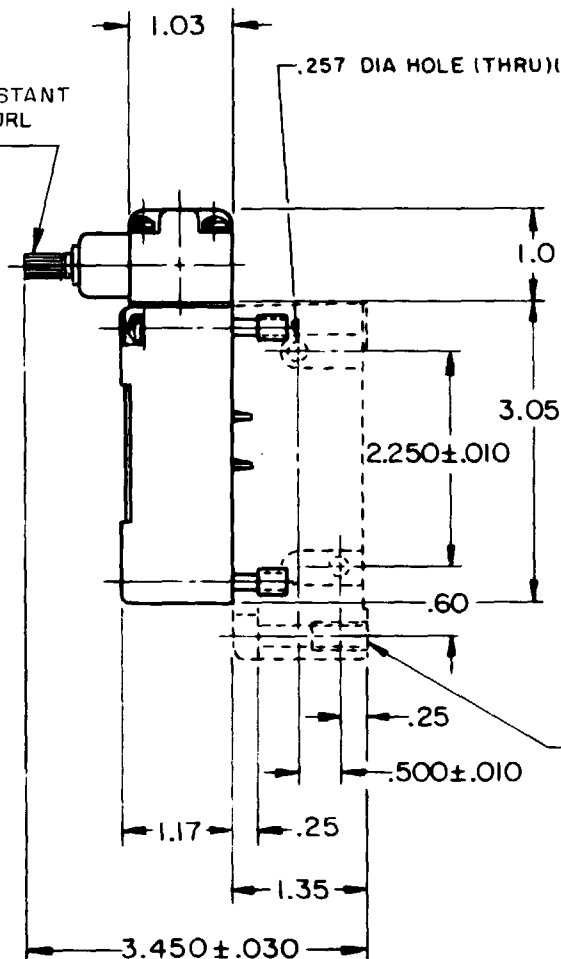


SWITCH - ENCLOSED

CATALOG LISTING
201LS502



HARDENED CORROSION RESISTANT
STEEL SHAFT STRAIGHT KNURL
 42 ± 10 THREADS PER INCH



THIS DRAWING COVERS A PROPRIETARY ITEM AND IS THE PROPERTY OF MICRO SWITCH, A DIVISION OF MINNEAPOLIS-HONEYWELL REGULATOR CO. THIS DRAWING IS NOT TO BE COPIED OR USED WITHOUT THE APPROVAL OF MICRO SWITCH.

CHARACTERISTICS	ELECTRICAL DATA	SCALE 1/2 TO 1
OPERATING FORCE - 4 1/2 LB IN MAX	CONTACT ARRANGEMENT (SEE CIRCUIT DIAGRAM)	DO NOT SCALE PRINT
FULL OVERTRAVEL FORCE - 6 LB IN MAX		UNLESS OTHERWISE NOTED
RELEASE FORCE - 3/4 LB IN MIN		DIMENSIONS ARE IN INCHES
PRETRAVEL - 20° MAX	10A - 120 VAC; 1/3 HP - 120 VAC	TOLERANCES ARE:
DIFFERENTIAL TRAVEL - 12° MAX		ONE PLACE (.0) $\pm .030$
OVERTRAVEL - 30° MIN		TWO PLACE (.00) $\pm .015$
RELEASE TRAVEL - 5° MIN		THREE PLACE (.000) $\pm .005$
SWITCH-BASIC REPLACEMENT - 2MN14		ANGLES \pm
		WEIGHT

NOTE-

- 1 - SWITCH IS ASSEMBLED FOR ACTUATION IN BOTH DIRECTIONS BUT MAY BE ADJUSTED TO ACTUATE IN EITHER THE CLOCKWISE DIRECTION ONLY OR THE COUNTERCLOCKWISE DIRECTION ONLY
- 2 - TO CONVERT SWITCH FOR ACTUATION IN EITHER THE CLOCKWISE OR COUNTERCLOCKWISE DIRECTION ONLY, REMOVE ACTUATOR HEAD AND ROTATE THE NOTCHED PLUNGER 90° TO THE RIGHT FOR CLOCKWISE ACTUATION OR 90° TO THE LEFT FOR COUNTERCLOCKWISE ACTUATION
- 3 - ALUMINUM HOUSING FINISHED WITH BLUE PAINT
- 4 - UNIT CONTAINS ENCLOSED PILOT LIGHT FOR 120 VAC OPERATION
- 5 - PLASTIC INSERT MAY BE REVERSED SO THAT LAMP WILL LIGHT WHEN EITHER THE NO OR THE NC CIRCUIT IS OPEN. PRIOR TO INSTALLING SWITCH REMOVE PLASTIC INSERT, REMOVE TAPE WHICH COVERS HOLES IN BASIC SWITCH COVER THAT CORRESPOND TO CIRCUIT TO BE USED FOR INDICATING LAMP, INSTALL INSERT WITH CONTACT SPRING EXTENDING THROUGH HOLES IN BASIC SWITCH COVER

201LS502

M

DRAWING
NUMBER

ISSUE

4

REVISIONS

A C080837
JAK
10 MAY 95

REPLACES

SR 11477

CHECK

CHECK

CHECK

CHECK

CHECK

CHECK

CHECK

CHECK

CHECK

CHECK

FORMTEK

DRAWN

MB F

12 MAR 64