

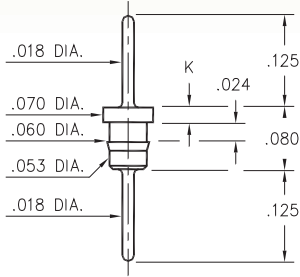
# MALE PCB PINS

## PRINTED CIRCUIT PINS

### 1752/6458

XXXX-0-00-XX-00-00-03-0

Press-fit in .057 mounting hole

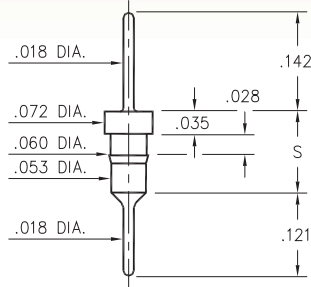


Basic Part Number	Length K
1752-0	.020
6458-0	.035

### 3413/8404

X4XX-0-00-XX-00-00-03-0

Press-fit in .057 mounting hole

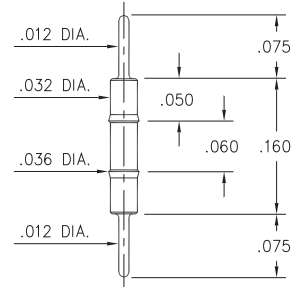


Basic Part Number	Length S
3413-0	.118
8404-0	.131

### 9075

9075-0-00-XX-00-00-03-0

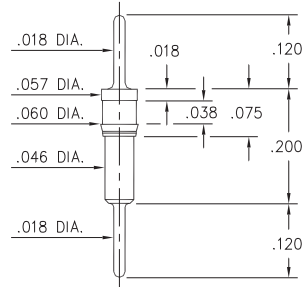
Press-fit in .034 mounting hole



### 9218

9218-0-00-XX-00-00-03-0

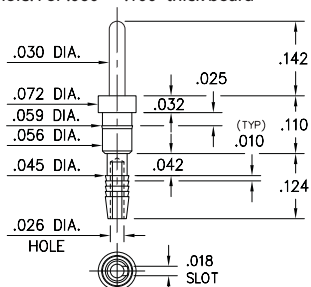
Press-fit in .057 mounting hole



### 5607

5607-0-01-XX-00-00-03-0

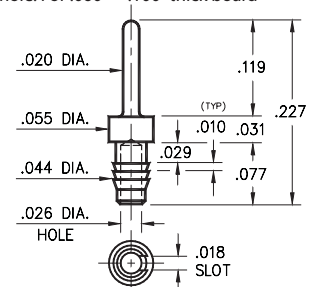
Compliant press-fit in .040 ± .003 plated hole. For .060" → .100" thick board



### 2617

2617-0-01-XX-00-00-03-0

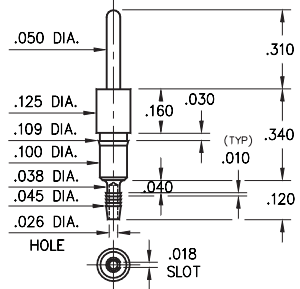
Compliant press-fit in .040 ± .003 plated hole. For .060" → .100" thick board



### 8995

8995-0-01-XX-00-00-03-0

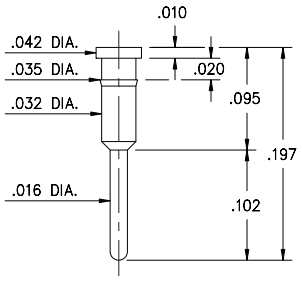
Compliant press-fit in .040 ± .003 plated hole. For .060" → .100" thick board



### 1933

1933-0-00-XX-00-00-03-0

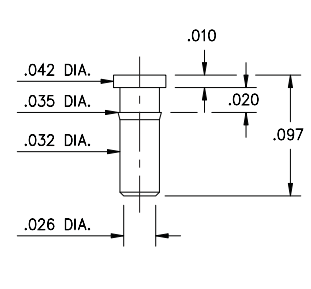
Press-fit in .034 mounting hole



### 1935

1935-0-00-XX-00-00-03-0

Press-fit in .034 mounting hole



#### SPECIFICATIONS:

**Pin Material:** Brass Alloy 360, 1/2 Hard  
(Except where noted)

**Dimensions:** Inches

**Tolerances On:** Lengths: ± .005  
Diameters: ± .002  
Angles: ± 2°



ORDER CODE: XXXX - X - 0X - XX - 00 - 00 - 03 - 0

BASIC PART #

SPECIFY PIN FINISH:

- 01 200 μ" TIN/LEAD OVER NICKEL
- ◆ 80 200 μ" TIN OVER NICKEL (RoHS)
- ◆ 15 10 μ" GOLD OVER NICKEL (RoHS)
- ◆ 21 20 μ" GOLD OVER NICKEL (RoHS)
- ◆ 34 50 μ" GOLD OVER NICKEL (RoHS)

