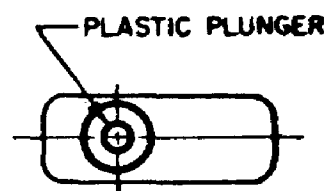
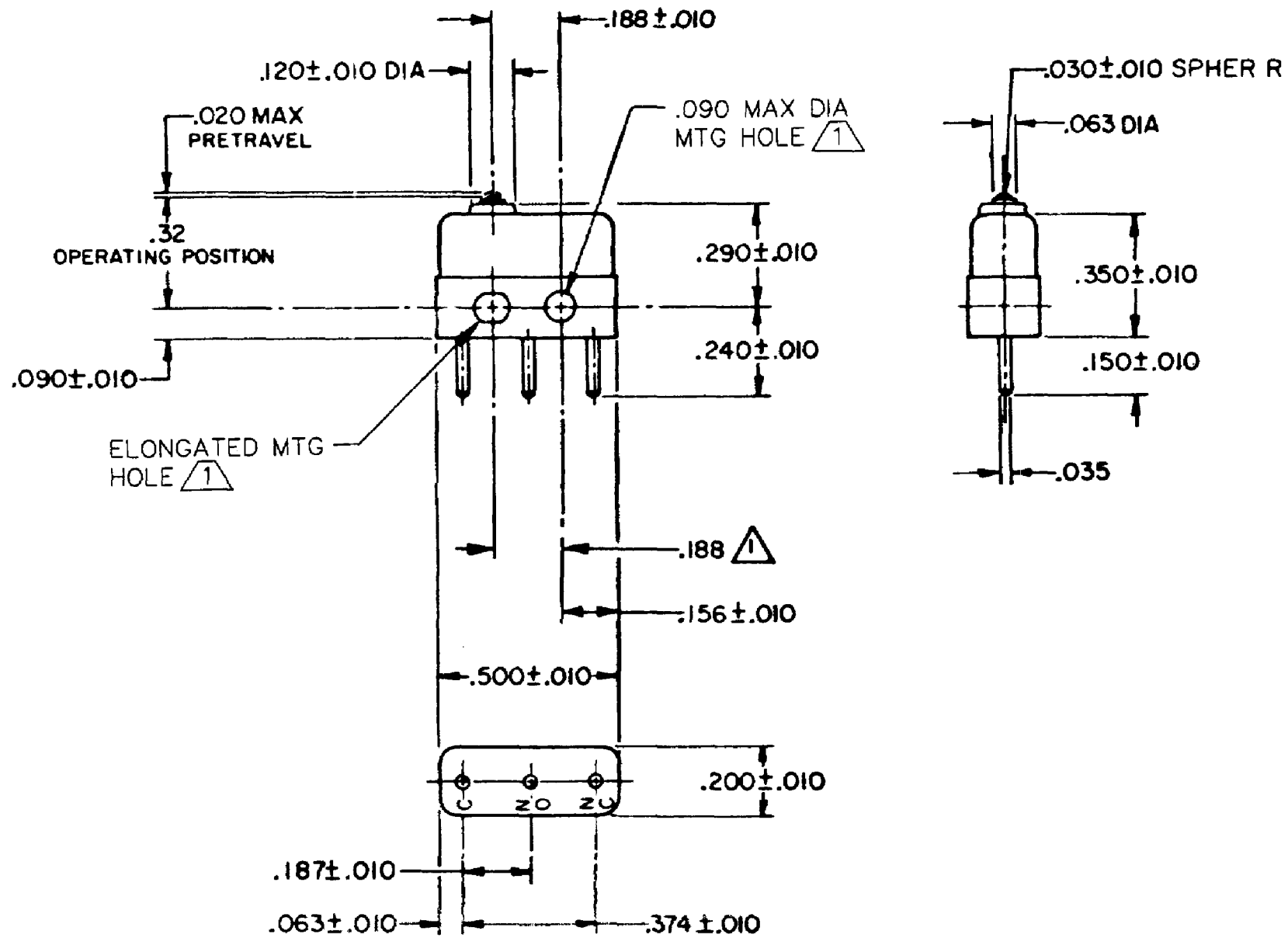


HONEYWELL PART NUMBER
23SX26
PRODUCT CODE VDP0500
JG-NUMBER JG-83642

REV	DOCUMENT	CHANGED BY	CHECK
11	0087806	SBH 21MAR12	CMH



PLASTIC PLUNGER



- NOTES
- 1 MOUNTING HOLES WILL ACCEPT PINS OR SCREWS OF .087 MAX DIA ON .188±.002 CENTERS
  - 2 - TERMINALS ARE PLATED FOR SOLDERING
  - 3 - MOVABLE CONTACT MATERIAL - GOLD PLATED, GOLD ALLOY
  - 4 - STATIONARY CONTACT MATERIAL - GOLD ALLOY
  - 5 - SWITCH WILL WITHSTAND TEMPERATURE OF 185°F

RELEASE NO.	PR-10247
REPLACES	

CHARACTERISTICS	
OPERATING FORCE - - -	5 OZ MAX
RELEASE FORCE - - - -	1 OZ MIN
DIFFERENTIAL TRAVEL - - -	.005 MAX
OVERTRAVEL - - - - -	.004 MIN

ELECTRICAL DATA		
CONTACT ARRANGEMENT SPDT		
30 VOLTS DC RATING		
	SEA LEVEL	50,000 FT
INDUCTIVE	0.5 AMP	0.5 AMP
RESISTIVE	1 AMP	1 AMP
MAXIMUM INRUSH 2 AMP		
APPROVALS	KEMA, CE	1A 250 V - T125 25E3
	UL, CSA	1A 125 VAC    BRAND L22J

DESIGN UNITS: INCH
TOLERANCES UNLESS NOTED:
NO PLACE X ±
ONE PLACE .X ±
TWO PLACE .XX ±
THREE PLACE .XXX ±
FOUR PLACE .XXXX ±
ANGLES ±
THIRD ANGLE PROJECTION

DRAWN	SPK	21FEB08
CHECK	RJ	21FEB08
THIS DRAWING COVERS A PROPRIETARY ITEM AND IS THE PROPERTY OF HONEYWELL. THIS DRAWING IS NOT TO BE COPIED OR USED WITHOUT THE PERMISSION OF HONEYWELL.		
INTERPRET PER ANSI Y14.5M-1982 OTHER HONEYWELL ENGINEERING STANDARDS MAY APPLY		
RASTER		

<b>Honeywell</b>			
TITLE <b>SWITCH - BASIC</b>			
SIZE	TYPE	DRAWING NAME	REV
<b>B</b>	<b>I</b>	<b>23SX26</b>	<b>11</b>
SCALE	-	WEIGHT: .003 LB MAX	SHEET 1 OF 1