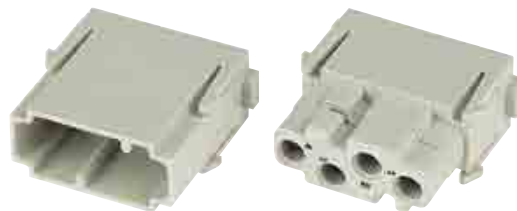


Number of contacts

# 4



Identification	Part number		Drawing	Dimensions in mm
	Male insert (M)	Female insert (F)		
Multi module acc. to DIN 41 626 Order contacts separately	<b>09 14 004 4501</b>	<b>09 14 004 4512</b>		

Han  
Modular

Identification	Impedance	Part number		Drawing	Dimensions in mm
Coaxial contacts acc. to DIN 41 626* Solder / crimp contact  	<b>50 Ω</b> <b>75 Ω</b>	<b>09 14 000 6211</b> <b>09 14 000 6221</b>	<b>09 14 000 6111</b> <b>09 14 000 6121</b>		For cable group 2 flexible wires
F.O. contacts acc. to DIN 41 626 for SI fibre (HCS®) 200/230 μm   for GI fibre 50/125 μm or 62.5/125 μm ceramic ferrule  for 1 mm plastic fibre		<b>20 10 230 4211</b>	<b>20 10 230 4221</b>		

\* Using of guiding pins is imperative (see chapter 95).

Stock items in bold type