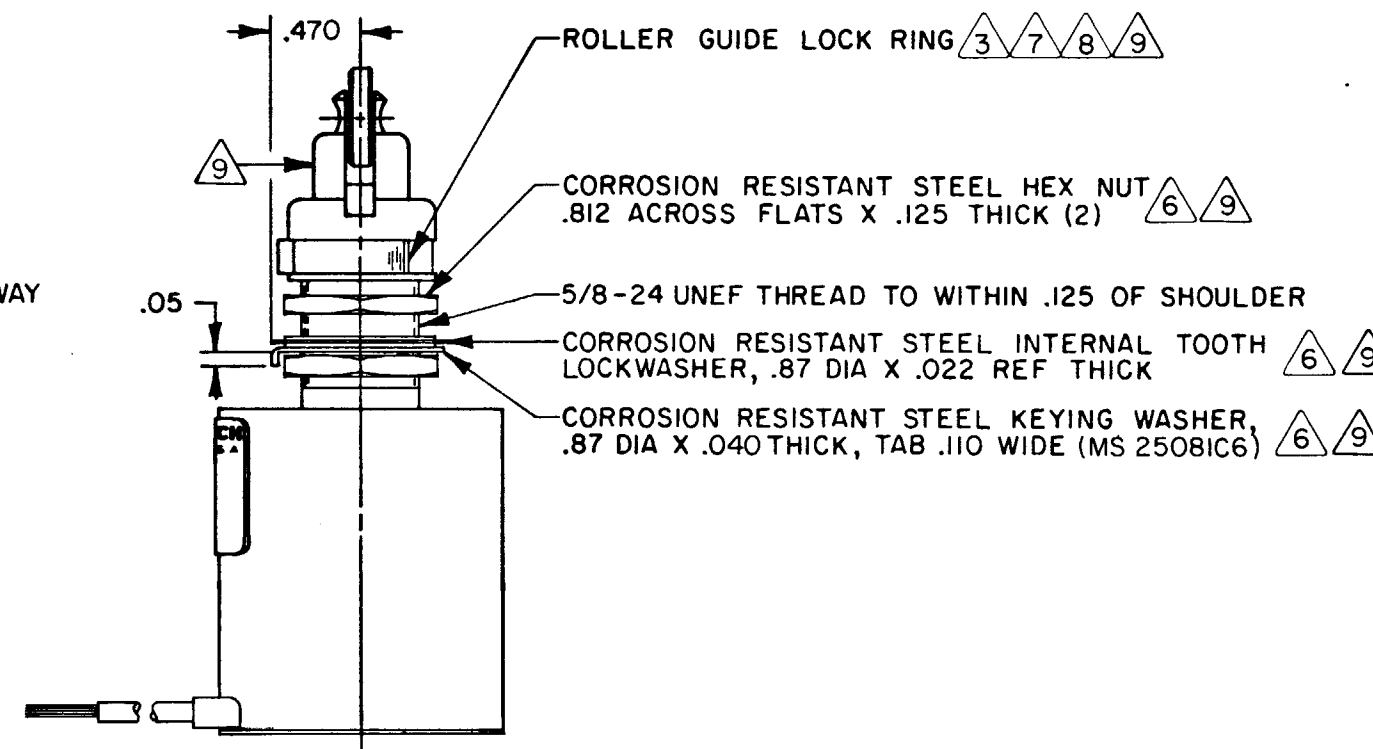
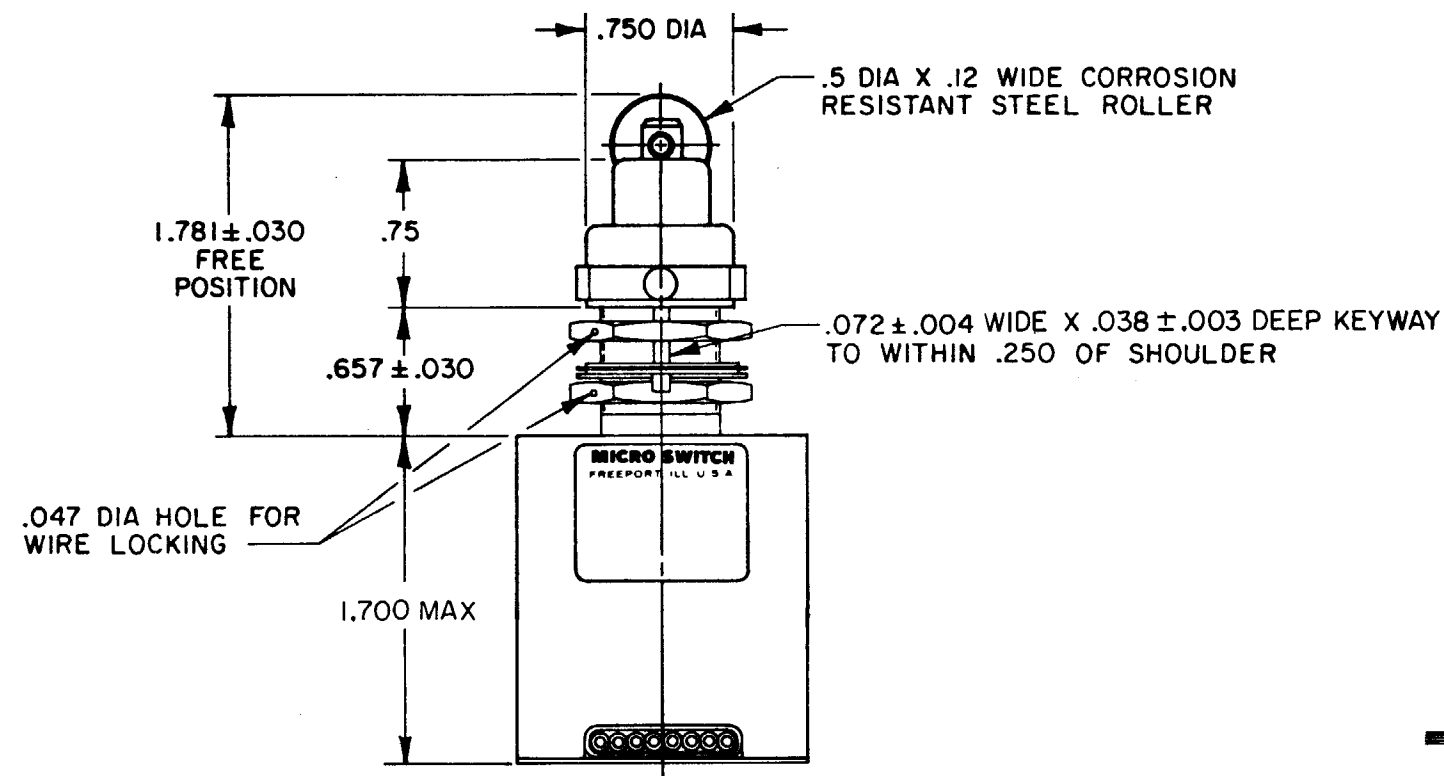
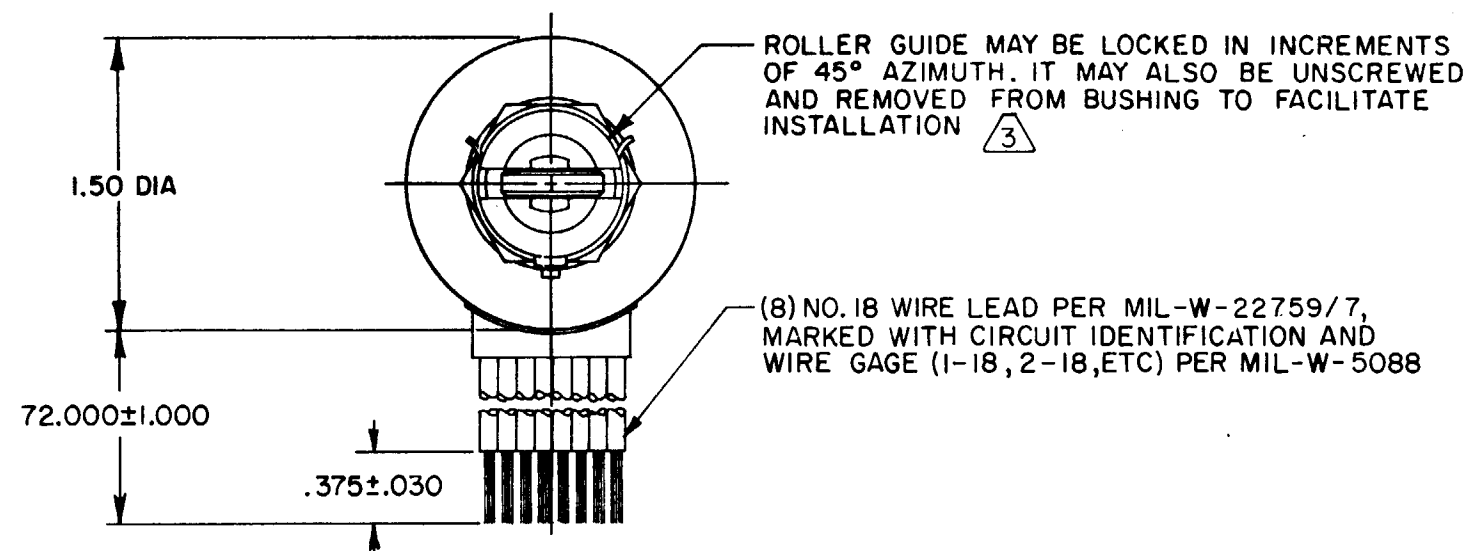
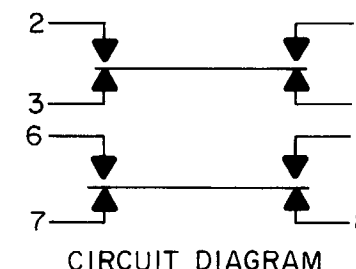


MICRO SWITCH
FREEPORT, ILLINOIS U.S.A.
A DIVISION OF HONEYWELL
FED. MFG. CODE 91929

SWITCH - ENCLOSED

CATALOG LISTING
24EN9-6



NOTES

- 1 - CORROSION RESISTANT STEEL ENCLOSURE
- 2 - SWITCH SEALED PER MIL-S-8805, SYMBOL 4
- $\triangle 3$ TO ADJUST ROLLER DIRECTION, REMOVE ROLLER GUIDE LOCK RING SCREW ROLLER GUIDE DOWN AS FAR AS POSSIBLE, THEN UNSCREW TO DESIRED DIRECTION. SECURE BY REPLACING ROLLER GUIDE LOCK RING
- 4 - COINCIDENCE OF OPERATING AND RELEASING POINTS: .010 OF PLUNGER TRAVEL
- 5 - CIRCUIT DIAGRAM AND CATALOG LISTING ARE SHOWN ON NAMEPLATE
- $\triangle 6$ REPLACEMENT MOUNTING HARDWARE PACKET: 19PA8
- $\triangle 7$ REPLACEMENT ROLLER GUIDE AND LOCK RING PACKET: 15PA104
- $\triangle 8$ REPLACEMENT LOCK RING PACKET: 15PA106
- $\triangle 9$ HARDWARE MAY BE PACKAGED UNASSEMBLED PER MIL-S-8805

THIS DRAWING COVERS A PROPRIETARY ITEM AND IS THE PROPERTY OF MICRO SWITCH, A DIVISION OF HONEYWELL. THIS DRAWING IS NOT TO BE COPIED OR USED WITHOUT THE APPROVAL OF MICRO SWITCH.

THIRD ANGLE PROJECTION

SCALE FULL

DO NOT SCALE PRINT

TOLERANCES
APPLY TO DESIGN UNITS. CONVERSIONS ARE ONLY FOR REFERENCE. UNLESS NOTED, TOLERANCES ARE \pm

DIM.	TOL.	DIM.	TOL.
mm	mm/in	in	mm/in
NO PLACES	X	1/100	X
ONE PLACE	X, X	0.001	X, X
TWO PLACES	X, XX	0.0001	X, XX
THREE PLACES	X, XXX	0.00001	X, XXX
ANGLES			

DESIGN UNITS
SI METRIC ☐ US CUSTOMARY ☒
RAW MATERIAL-COMMERCIAL STANDARD
MICRO SWITCH STANDARDS APPLY
DIMENSIONS ARE TO BE MET BEFORE PROTECTIVE COATINGS ARE APPLIED

WEIGHT 13.0 OZ MAX

CHARACTERISTICS	ELECTRICAL DATA
OPERATING FORCE — — — — — 6-12 LB	CONTACT ARRANGEMENT (SEE CIRCUIT DIAGRAM)
FULL OVERTRAVEL FORCE — — — — — 30 LB MAX	
RELEASE FORCE — — — — — 5 LB MIN	
PRETRAVEL — — — — — .070 MAX	
DIFFERENTIAL TRAVEL — — — — — .045 MAX	
OVERTRAVEL — — — — — .250 MIN	

LOAD	28 VDC
RES	15
IND	10
MOTOR	5

24EN9-6

M
DRAWING NUMBER

18
ISSUE

REVISIONS
A CO44351
D J W
9 NOV 79
B CO47573
PART 4
R J H
13 AUG 80
C CO
51830 F
S L B
19 JAN 83

REPLACES

RELEASE NO.

CHECK

CHECK

CHECK

CHECK

FO-32851-A

DRAWN

D J W

NOV 79

CEB

12 NOV 79