

MICRO SWITCHFREEPORT ILLINOIS U S A
A DIVISION OF HONEYWELL

FED. MFG. CODE 91929

**ASSEMBLY-
PUSHBUTTON SWITCH**

CATALOG LISTING

2PB11-H58**FAA-PMA**

2PB11-H58

CATALOG LISTING

PAGE 1 OF 1

REPLACES

RELEASE NO. PR-8818

22 OCT 98

CHECK

25 JUL 99

CHECK

25 JUL 99

CHECK

25 JUL 99

CHECK

25 JUL 99

M

ISSUE

8

JAF

CHECK

25 JUL 99

CHECK

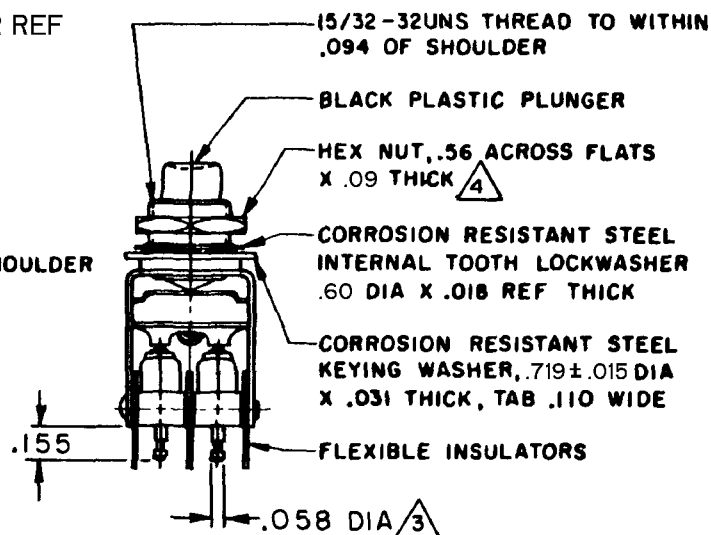
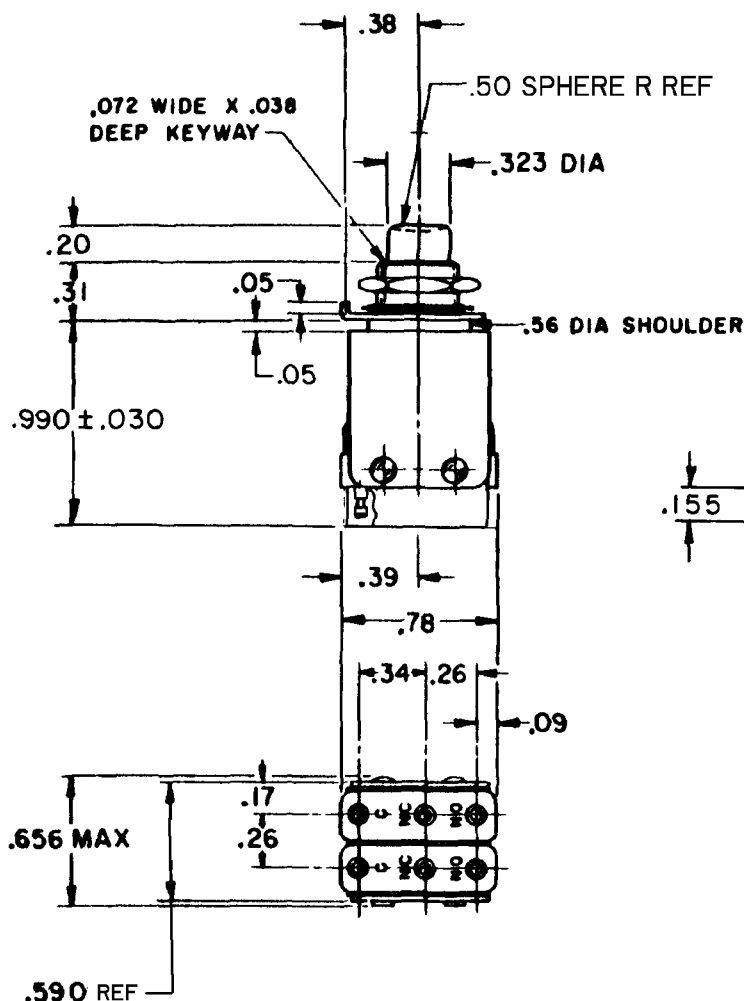
25 JUL 99

CHECK

25 JUL 99

CHECK

25 JUL 99

**NOTES**

- 1 - UNIT INCLUDES "ISM" TYPE BASIC SWITCH (2)
- 2 - SWITCHES DO NOT NECESSARILY OPERATE SIMULTANEOUSLY
- 3 PLATED TERMINALS WILL ACCEPT "AMP INC".058 DIA PIN RECEPTACLES
- 4 HARDWARE FURNISHED UNASSEMBLED

THIS DRAWING COVERS A PROPRIETARY ITEM AND IS THE PROPERTY OF MICRO SWITCH. A DIVISION OF HONEYWELL THIS DRAWING IS NOT TO BE COPIED OR USED WITHOUT THE APPROVAL OF MICRO SWITCH.

CHARACTERISTICS

OPERATING FORCE ---30 OZ APPROX

TOTAL TRAVEL -----,100 APPROX

ELECTRICAL DATACONTACT ARRANGEMENT
S P D T (2)250 VAC ----- 5 AMP
30 VOLTS DC RATING

INDUCTIVE -----SEA LEVEL--- 3 AMP

50,000 FT---2.5 AMP

RESISTIVE -----SEA LEVEL--- 8 AMP

50,000 FT--- 8 AMP

MAXIMUM INRUSH -----24 AMP

SCALE FULL

DO NOT SCALE PRINT

UNLESS OTHERWISE
NOTED

DIMENSIONS ARE IN INCHES

TOLERANCES ARE:ONE PLACE (.0) ±.030
TWO PLACE (.00) ±.015
THREE PLACE (.000) ±.005
ANGLES ±

WEIGHT

FORMTEK

DRAWN

MBS