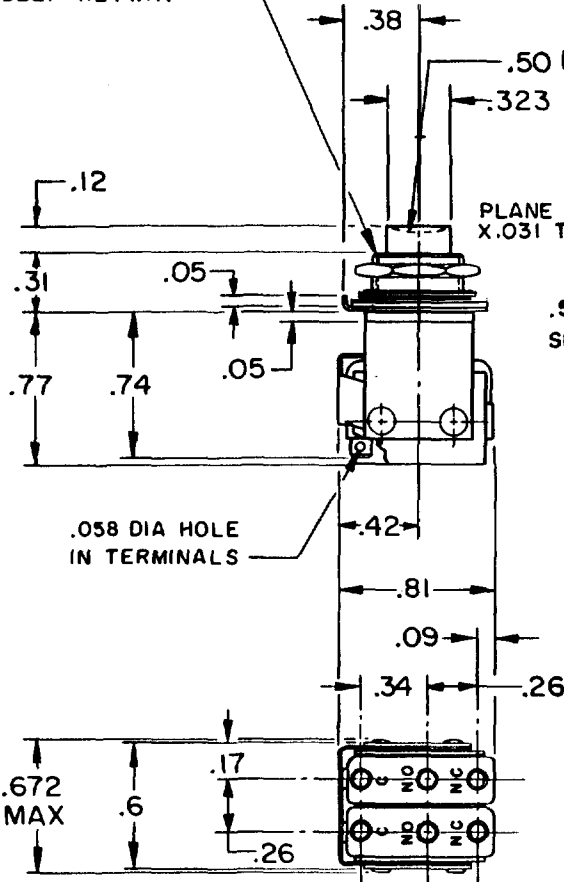


**MICRO SWITCH**FREEPORT, ILLINOIS, U.S.A.
A DIVISION OF HONEYWELL

FED. MFG. CODE 91929

**ASSEMBLY-
PUSHBUTTON SWITCH**

CATALOG LISTING

2PB2.072 WIDE X .038
DEEP KEYWAY15/32-32 NS THREAD TO WITHIN .094 OF
SHOULDER

BLACK PLASTIC PLUNGER

PLANE WASHER .72 DIA
X .031 THICK.56 DIA
SHOULDERHEX NUT .56 ACROSS FLATS X .09
THICK Δ INTERNAL TOOTH LOCKWASHER
.615 \pm .015 DIA X .022 REF THICK Δ CORROSION RESISTANT STEEL
KEYING WASHER, .719 \pm .015 DIA
X .031 THICK, TAB .110 WIDE Δ

FLEXIBLE INSULATORS

.110 DIA

NOTES

- 1-UNIT INCLUDES CAT. LIST. "ISM" TYPE BASIC SWITCH (2)
- 2-TERMINALS ARE PLATED FOR SOLDERING
- 3-BASIC SWITCHES OPERATE WITHIN .008 OF EACH OTHER
(PUSHBUTTON PLUNGER TRAVEL)
- Δ 4-MOUNTING HARDWARE FURNISHED UNASSEMBLED

THIS DRAWING COVERS A PROPRIETARY ITEM AND IS THE PROPERTY OF MICRO SWITCH, A DIVISION OF
HONEYWELL. THIS DRAWING IS NOT TO BE COPIED OR USED WITHOUT THE APPROVAL OF MICRO SWITCH.**CHARACTERISTICS**

OPERATING FORCE — — 1 1/2 LB APPROX

ELECTRICAL DATACONTACT ARRANGEMENT
S P D T (2)250 VAC — — — — — 5 AMP
30 VOLTS DC RATING

INDUCTIVE — — —	SEA LEVEL — — —	3 AMP
	50,000 FT — — —	2.5 AMP
RESISTIVE — — —	SEA LEVEL — — —	5 AMP
	50,000 FT — — —	5 AMP
MAXIMUM INRUSH — — —		24 AMP

SCALE FULL

DO NOT SCALE PRINT

UNLESS OTHERWISE
NOTED

DIMENSIONS ARE IN INCHES

TOLERANCES ARE:

ONE PLACE	(.0)	\pm .030
TWO PLACE	(.00)	\pm .015
THREE PLACE	(.000)	\pm .005
ANGLES		\pm

WEIGHT

A3

2PB2

PAGE 1 OF 1

M

DRAWING
NUMBER

9

ISSUE

REVISIONS

A	CO19743	22 OCT 98
M B F		
26 MAR 65		
B	CO31782	
D B W		
16 MAR 73		
C	CO-93593	
P P F		
22 OCT 98		

REPLACES

RELEASE NO.

CHECK

J A F

CHECK

B A P R G S

L S D

CHECK

26 MAR 65

DRAWN

M B F

FO-50376