

2PB421-T

PAGE 1 OF 1

RELEASE NO. PR-8667

M

DRAWING
NUMBER

ISSUE
2

REVISIONS

A C095143
DLT
15 JUL 99

CHECK

CHECK

80

14 APR 80

C E B

CHECK

80

10 APR 80

C E B

CHECK

80

FORMTEK

FO-52848-A

DRAWN

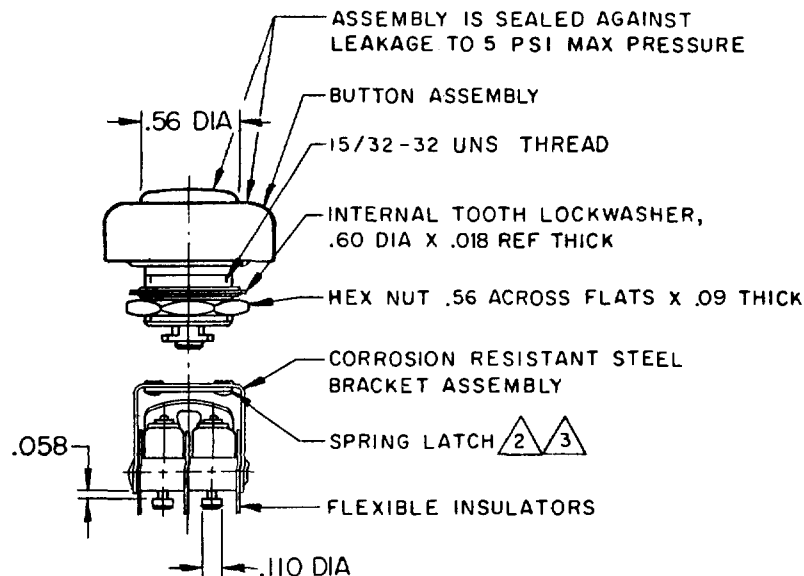
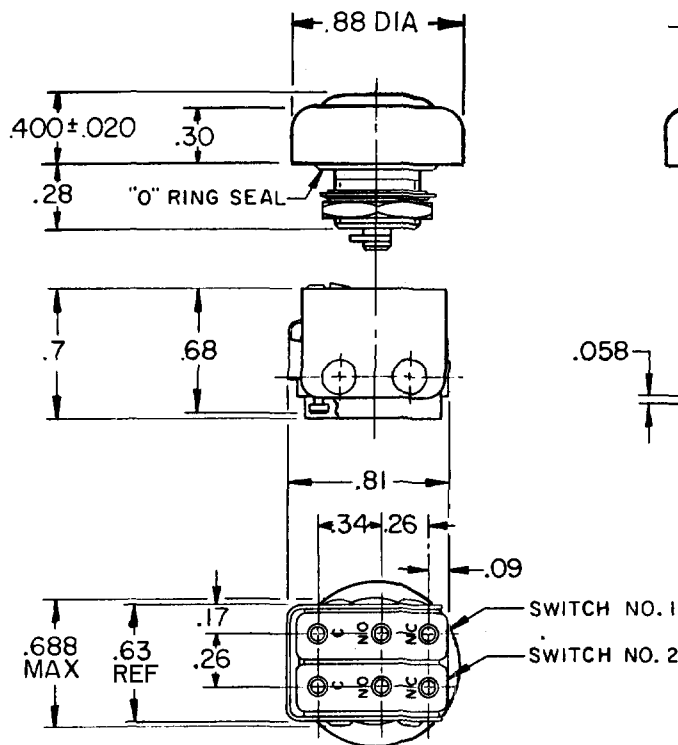
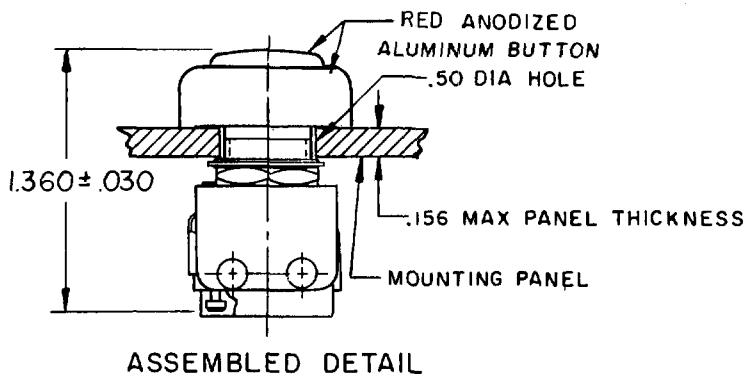
C E B

CHECK

80

10 APR 80

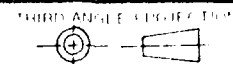
C E B



NOTES

- 1 - UNIT INCLUDES CATALOG LISTING "ISM" TYPE BASIC SWITCH
- 2 SPRING LATCH PERMITS ASSEMBLY AND DISASSEMBLY AS REQUIRED
- 3 "D" SHAPED HOLE IN SPRING LATCH PREVENTS ROTATION BETWEEN THE TWO PARTS
- 4 - ASSEMBLY IS COMPLETED AFTER INSTALLING BUTTON TO PANEL
- 5 - SWITCHES DO NOT NECESSARILY OPERATE SIMULTANEOUSLY
- 6 - TERMINALS ARE PLATED FOR SOLDERING
- 7 - BASIC SWITCHES HAVE 24K SOLID GOLD CONTACTS

THIS DRAWING COVERS A PROPRIETARY ITEM AND IS THE PROPERTY OF MICRO SWITCH, A DIVISION OF HONEYWELL. THIS DRAWING IS NOT TO BE COPIED OR USED WITHOUT THE APPROVAL OF MICRO SWITCH.



CHARACTERISTICS

OPERATING FORCE --- 2 1/2 LB APPROX
PLUNGER TRAVEL ----- .062 APPROX

ELECTRICAL DATA

CONTACT ARRANGEMENT
S P D T (2)

30 VOLTS DC RATING

INDUCTIVE ---- SEA LEVEL -- 1/2 AMP
50,000 FT -- 1/2 AMP
RESISTIVE ---- SEA LEVEL -- 1 AMP
50,000 FT -- 1 AMP
MAXIMUM INRUSH ----- 2 AMP

SCALE **FULL**

DO NOT SCALE PRINT

TOLERANCES

APPLY TO DESIGN UNITS. CONVERSIONS ARE ONLY FOR REFERENCE. UNLESS NOTED, TOLERANCES ARE:

DIM.	TOL.	DIM.	TOL.
in	mm	in	mm
NO PLACES	X	1/64	0.0156
ONE PLACE	X.X	0.0156	0.0156
TWO PLACES	X.XX	0.00156	0.00156
THREE PLACES	X.XXX	0.000156	0.000156
ANGLES			

SYMMETRIC

SEE CUSTOMER

DESIGN UNITS ☐

WEIGHT