

**MICRO SWITCH**FREEPORT, ILLINOIS, U.S.A.
A DIVISION OF HONEYWELL

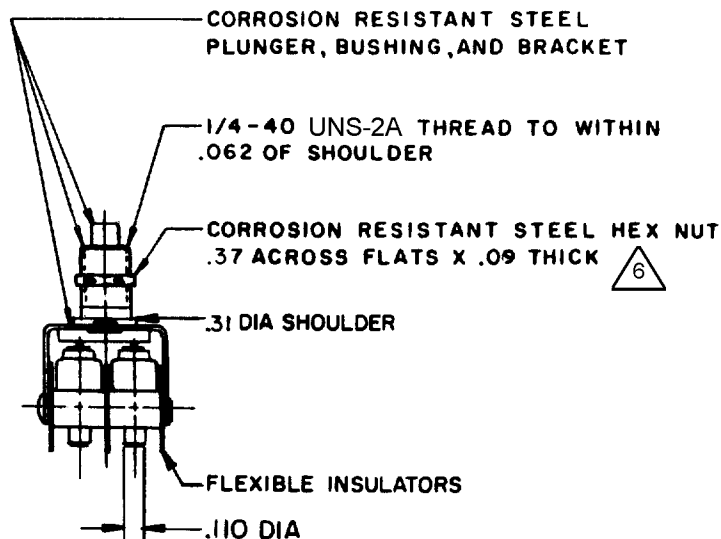
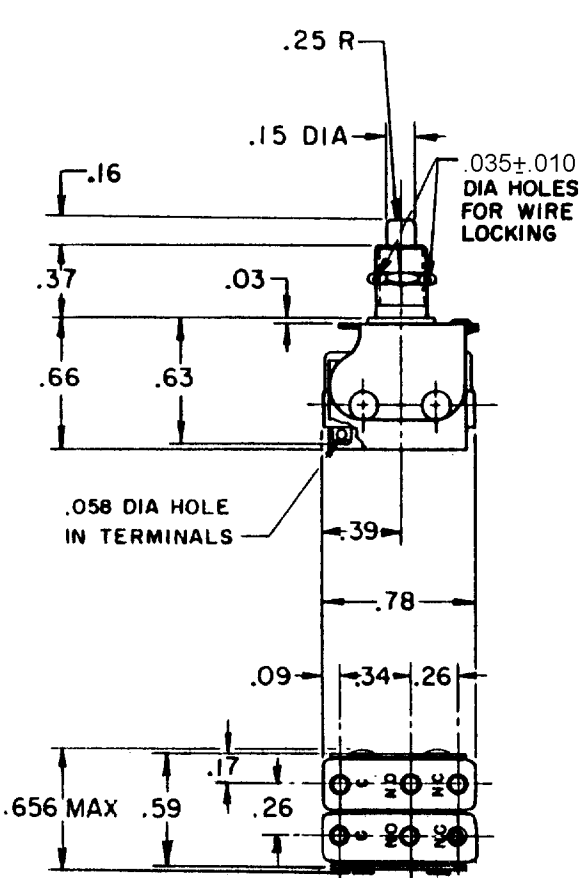
FED. MFG. CODE 91929

**ASSEMBLY-
PUSHBUTTON SWITCH**

CATALOG LISTING

2PB589

CATALOG LISTING		2PB589		PAGE 1 OF 1		REPLACES	
DRAWING NUMBER		M		RELEASE NO. PR-15932			
ISSUE		6					
REVISIONS							
A		C072758		20 FEB 06		CHECK	
L J F		24 JUL 92					
B		C073466		20 FEB 06		CHECK	
K A G		28 SEP 92					
C		201411					
C S L		2 OCT 00		RJ			
D		201523					
C S L		13 OCT 00		CHECK			
E		0018501					
T S G		20 FEB 06					
DRAWN		S. J. S.		14 OCT 87		CHECK	
FO-30378							

**NOTES**

- 1 - UNIT INCLUDES CATALOG LISTING 12SM83 BASIC SWITCH (2)
- 2 - TERMINALS ARE PLATED FOR SOLDERING
- 3 - RECOMMENDED FOR MANUAL OPERATION ONLY
- 4 - SWITCHES DO NOT NECESSARILY OPERATE SIMULTANEOUSLY
- 5 - FOR USE IN TEMPERATURE RANGE -65°F TO +400°F
- 6 MOUNTING HARDWARE FURNISHED UNASSEMBLED

THIS DRAWING COVERS A PROPRIETARY ITEM AND IS THE PROPERTY OF MICRO SWITCH, A DIVISION OF HONEYWELL. THIS DRAWING IS NOT TO BE COPIED OR USED WITHOUT THE APPROVAL OF MICRO SWITCH.

CHARACTERISTICS

OPERATING FORCE - - - - - 2 LB MAX

OVERTRAVEL - - - - - .075 MIN

ELECTRICAL DATACONTACT ARRANGEMENT
S P D T (2)**SCALE FULL**

DO NOT SCALE PRINT

UNLESS OTHERWISE
NOTED

DIMENSIONS ARE IN INCHES

TOLERANCES ARE:

ONE PLACE	(.0)	±.030
TWO PLACE	(.00)	±.015
THREE PLACE	(.000)	±.005
ANGLES		±

WEIGHT