

FED. MFG. CODE 91929

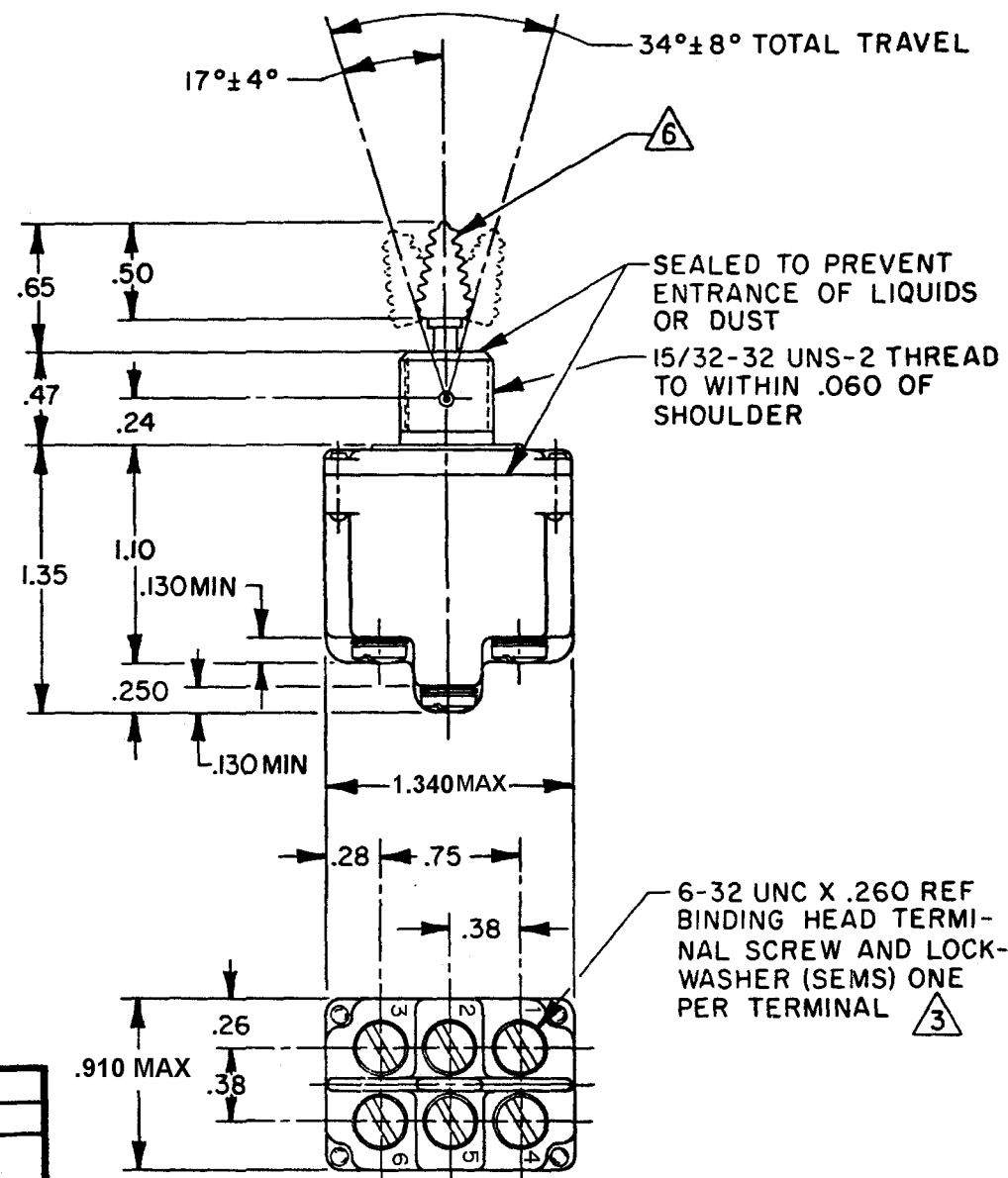
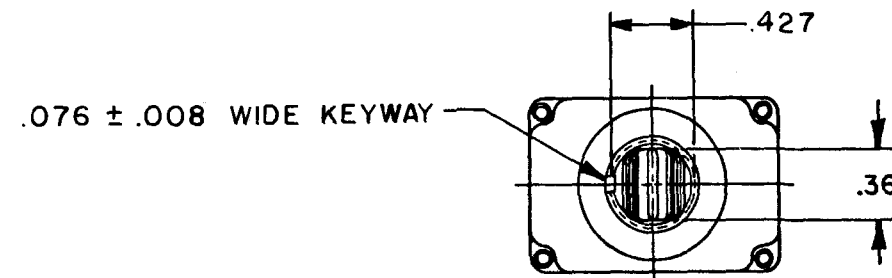
SWITCH-TOGGLE


CATALOG LISTING

2TL154 SERIES

CHART 1

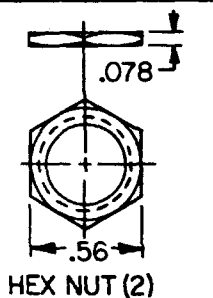
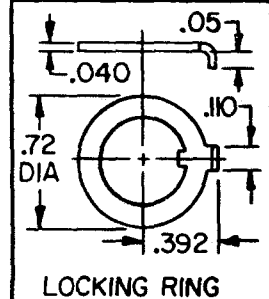
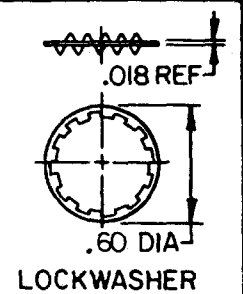
THIS DRAWING COVERS A PROPRIETARY ITEM AND IS THE PROPERTY OF MICRO SWITCH, A DIVISION OF HONEYWELL. THIS DRAWING IS NOT TO BE COPIED OR USED WITHOUT THE APPROVAL OF MICRO SWITCH.



- 6-32 UNC X .260 REF
BINDING HEAD TERMI-
NAL SCREW AND LOCK-
WASHER (SEMS) ONE
PER TERMINAL 

NOTES

- 1 - SWITCHES ARE CAPABLE OF WITHSTANDING A TEMPERATURE OF 160°F CONTINUOUSLY AT FULL RATED LOAD
- 2 - CIRCUIT DESIGNATION AND MICRO SWITCH CATALOG LISTING MARKED ON SIDE OF SWITCH
- 3 - FURNISHED UNASSEMBLED
- 4 - FOR TERMINAL COVER SEE MICRO SWITCH CATALOG LISTING 5PA8
- 5 - APPLIES ONLY TO "ON" AND "MOMENTARY ON" POSITIONS
- 6 - TOGGLE LEVER TAB FINISHED IN SATIN CHROME



SCALE FULL

DO NOT SCALE PRINT

**UNLESS OTHERWISE
NOTED**

TOLERANCES ARE:

ONE PLACE	(.0)	±.030
TWO PLACE	(.00)	±.015
THREE PLACE	(.000)	±.005
ANGLES		±

WEIGHT .12 LB APPROX

CODE L191 15A-125, 250, 277 VAC (C)
1/2 HP-125 VAC, 1 HP-250, 277 VAC
5A-125 VAC "L" (SP)

CODE L192 10A-125, 250, 277 VAC
1/4 HP-125 VAC, 1/2 HP-250, 277 VAC
3A-125 VAC "L" (SP) 21