

**MICRO SWITCH**

FREERPORT ILLINOIS U.S.A.  
A DIVISION OF HONEYWELL

FED. MFG. CODE 91929

**SWITCH-TOGGLE**

CATALOG LISTING  
**2TL183-10 SERIES**

**CHART 1**

CATALOG LISTING  
△ 6

AVAILABLE LOCKING COMBINATIONS FOR CONFIGURATION SEE LETTERING DETAILS

MILITARY RATING (AMPS)

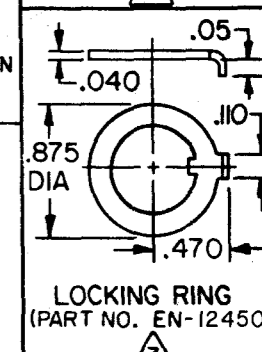
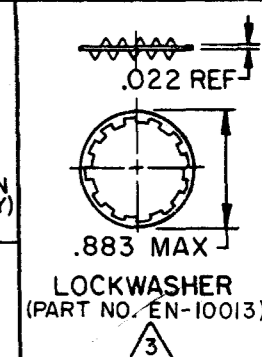
RESISTIVE LOAD DC VOLTS		LOAD AC VOLTS			LAMP LOAD	INDUCTIVE LOAD	
28	125	250	125	250	28 VDC	125 VAC	28 VDC 125 VAC
20	.75	.5	15	6	7	4	15 15

THIS DRAWING COVERS A PROPRIETARY ITEM AND IS THE PROPERTY OF MICRO SWITCH, A DIVISION OF HONEYWELL. THIS DRAWING IS NOT TO BE COPIED OR USED WITHOUT THE APPROVAL OF MICRO SWITCH.

2TL183-10

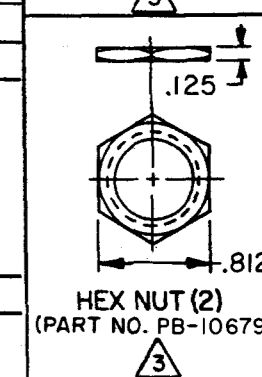
A,B,D,E,F,G,H,J,K,L,M,N,P

"A" △ 5 LOCKED IN THREE POSITIONS	"B" △ 5 LOCKED IN CENTER AND EXTREME POSITION (KEYWAY SIDE)	"D" △ 5 LOCKED OUT OF CENTER POSITION	"E" △ 5 LOCKED IN CENTER POSITION	"F" △ 5 LOCKED IN EXTREME POSITION (OPPOSITE KEYWAY)
"G" △ 5 LOCKED IN EXTREME POSITION (KEYWAY SIDE)	"H" △ 5 LOCKED OUT OF CENTER AND EXTREME POSITION (KEYWAY SIDE)	"J" △ 5 LOCKED OUT OF CENTER AND EXTREME POSITION (OPPOSITE KEYWAY)	"K" △ 5 LOCKED IN CENTER AND EXTREME POSITION (OPPOSITE KEYWAY)	"L" △ 5 LOCKED OUT OF EXTREME POSITION (KEYWAY SIDE)
"M" △ 5 LOCKED OUT OF AND INTO EXTREME POSITION (OPPOSITE KEYWAY)	"N" △ 5 LOCKED OUT OF EXTREME POSITION (OPPOSITE KEYWAY)	"P" △ 5 LOCKED OUT OF AND INTO EXTREME POSITION (KEYWAY SIDE)		

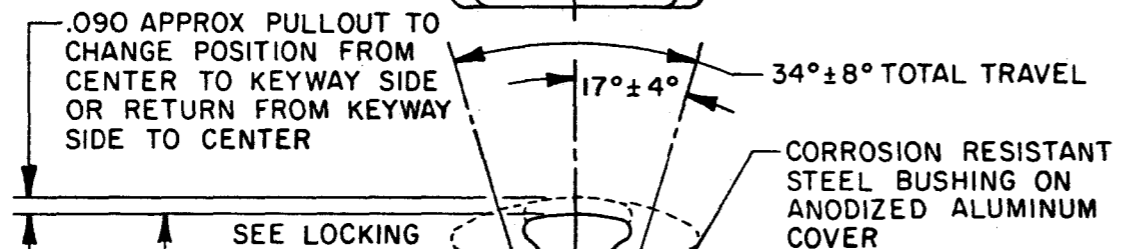
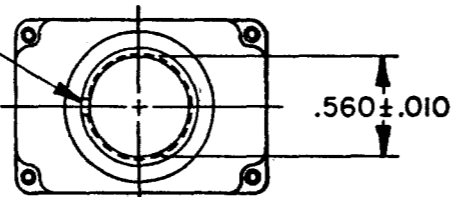


CIRCUIT MADE WITH TOGGLE LEVER IN

KEYWAY SIDE	CENTER	OPPOSITE KEYWAY
MAINTAINED POSITION	MAINTAINED POSITION	MAINTAINED POSITION



.076±.008 WIDE X  
.038±.007 DEEP KEYWAY

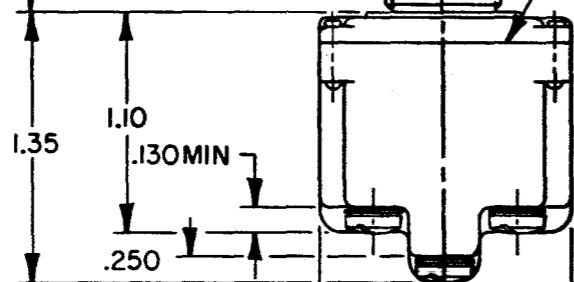


.090 APPROX PULLOUT TO CHANGE POSITION FROM CENTER TO KEYWAY SIDE OR RETURN FROM KEYWAY SIDE TO CENTER

SEE LOCKING DETAILS FOR DESCRIPTION ("P" LOCKING INSERT SHOWN)

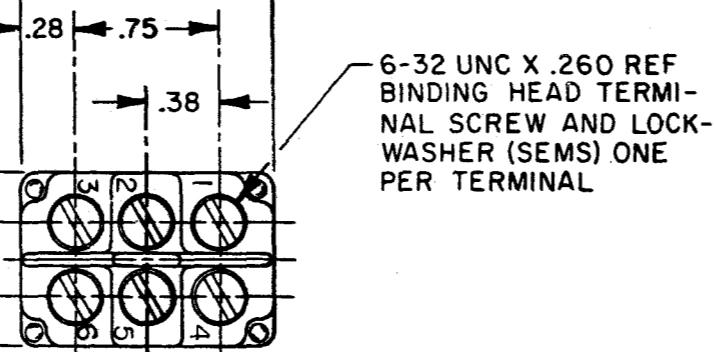
.985 MAX

.56  
.237±.015



.910 MAX

.26  
.38



6-32 UNC X .260 REF BINDING HEAD TERMINAL SCREW AND LOCKWASHER (SEMS) ONE PER TERMINAL

SCALE FULL

DO NOT SCALE PRINT

UNLESS OTHERWISE NOTED DIMENSIONS ARE IN INCHES

TOLERANCES ARE:

ONE PLACE	(.0)	±.030
TWO PLACE	(.00)	±.015
THREE PLACE	(.000)	±.005
ANGLES		±.005

WEIGHT .18 LB APPROX

15A-125, 250 OR 277VAC  
1/2HP-125VAC; 1HP-250, 277VAC  
5A-125VAC "L" CODE L191



CATALOG LISTING  
**M** 2TL183-10 SERIES CHART 1  
PAGE 1 OF 1  
ISSUE 4

REVISIONS

A	CO	78047	SAD	22 AUG 94
B	CO	94437	GJW	29 NOV 99
C	CO	003048	CMH	09 FEB 04

FORMTEK  
DRAWN TSM 9 JUN 94  
CHECK KAG 7 JUL 94  
CHECK MDM 09 FEB 04  
CHECK KAG 7 JUL 94  
CHECK MDM 09 FEB 04  
CHECK KAG 7 JUL 94  
CHECK MDM 09 FEB 04

2TL183-10 SERIES  
REPLACES CO-78497