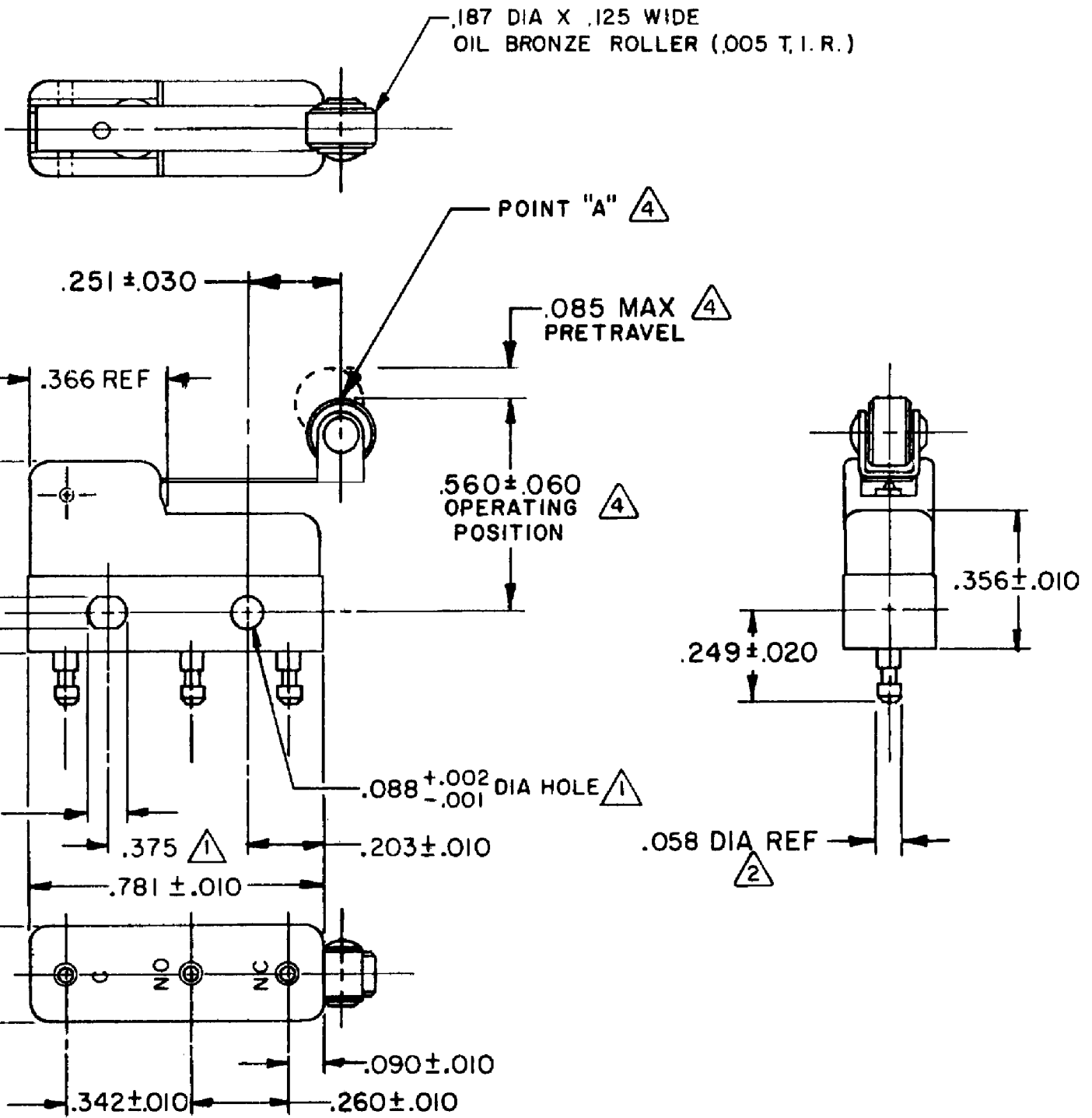


HONEYWELL  
PART NUMBER  
311SM706-H58  
PRODUCT CODE  
TZA2752

REV	DOCUMENT	CHANGED BY	CHECK
7	0038445	SSK 28APR08	BLR



- NOTES**
- ① MOUNTING HOLES WILL ACCEPT PINS OR SCREWS OF .087 MAX DIA ON .375 ± .002 CENTERS
  - ② PLATED TERMINALS WILL ACCEPT "AMP INC" .058 DIA PIN RECEPTACLES.
  - ③ - SWITCH WILL WITHSTAND TEMPERATURE OF 250° F
  - ④ CHARACTERISTICS TAKEN AT POINT "A"

RELEASE NO. PR-4399  
REPLACES -

**CHARACTERISTICS** ④

OPERATING FORCE -- 16 GRAM MAX

RELEASE FORCE -- 3 GRAM MIN

DIFFERENTIAL TRAVEL -- .013 MAX

OVERTRAVEL -- .018 MIN

**ELECTRICAL DATA**

CONTACT ARRANGEMENT SPDT

30 VOLTS DC RATING

	SEA LEVEL	50,000 FT
INDUCTIVE	3 AMP	2.5 AMP
RESISTIVE	5 AMP	5 AMP

MAXIMUM INRUSH 24 AMP

APPROVALS

UL, CSA	4A, 250 VAC			BRAND L119
---------	-------------	--	--	------------

DESIGN UNITS: INCH

TOLERANCES UNLESS NOTED:

NO PLACE	X	±	
ONE PLACE	.X	±	0.030
TWO PLACE	.XX	±	0.015
THREE PLACE	.XXX	±	0.005
FOUR PLACE	.XXXX	±	
ANGLES		±	

THIRD ANGLE PROJECTION

DRAWN	VK	21FEB 08
CHECK	RJ	21FEB 08
THIS DRAWING COVERS A PROPRIETARY ITEM AND IS THE PROPERTY OF HONEYWELL. THIS DRAWING IS NOT TO BE COPIED OR USED WITHOUT THE PERMISSION OF HONEYWELL.		
INTERPRET PER ANSI Y14.5M-1982 OTHER HONEYWELL ENGINEERING STANDARDS MAY APPLY		
RASTER		

<b>Honeywell</b>			
TITLE <b>SWITCH - BASIC</b>			
SIZE	TYPE	DRAWING NAME	REV
<b>B</b>	<b>I</b>	<b>311SM706-H58</b>	<b>7</b>
SCALE	-	WEIGHT .006 LB MAX	SHEET 1 OF 1