

CATALOG LISTING  
31NT1 SERIES CHART 1

PAGE 1 OF 1

REPLACES -

RELEASE NO. PR-20659

REVISIONS

PTC/CAD 2D

DRAWN

TSM 20NOV99

CHECK

SAV

29NOV99

CHECK

3

ISSUE

M

MICRO SWITCH  
a Honeywell Division  
FED. MFG. CODE 91929

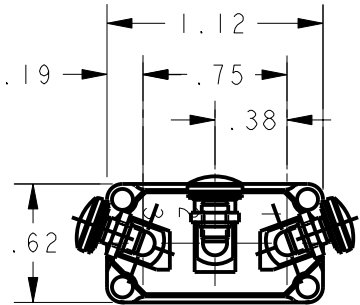
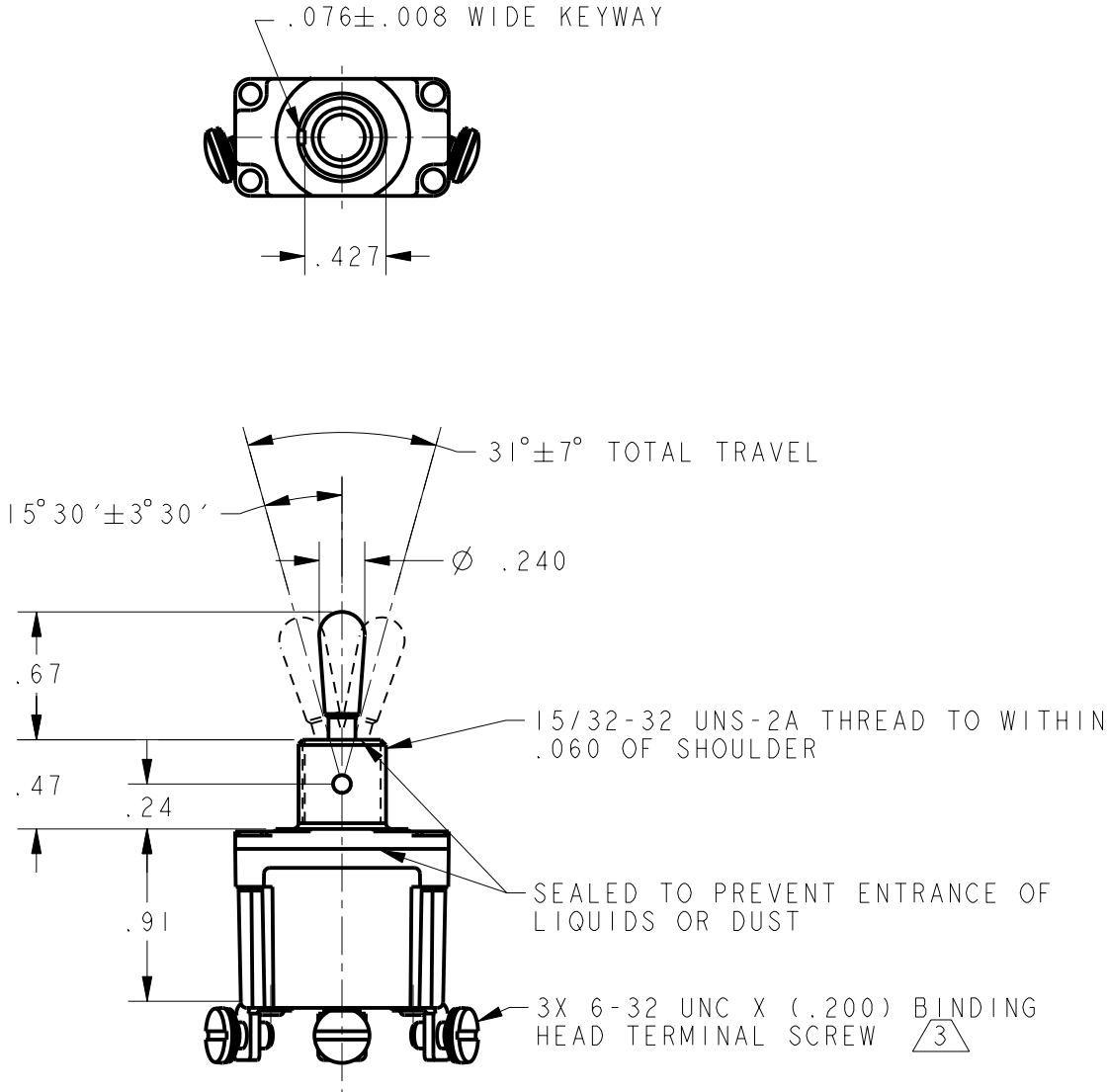
SWITCH - TOGGLE

31NT1 SERIES CHART 1

CATALOG LISTING

THIS DRAWING COVERS A PROPRIETARY ITEM AND IS THE PROPERTY OF MICRO SWITCH, A DIVISION OF HONEYWELL. THIS DRAWING IS NOT TO BE COPIED OR USED WITHOUT THE APPROVAL OF MICRO SWITCH

CATALOG LISTING	CIRCUIT MADE WITH TOGGLE LEVER IN <div>4</div>			ELECTRICAL DATA
	KEYWAY SIDE (1-2)	CENTER (1-2)	OPPOSITE KEYWAY (2-3)	
31NT1-1	ON	OFF	ON	L191 15A 125, <u>250</u> , 277 VAC 1/2HP 125 VAC 1HP <u>250</u> , 277 VAC 5A 125 VAC "L" <div>CE UL CS</div>
31NT1-2	OFF	NONE	ON	
31NT1-3	ON	NONE	ON	
31NT1-21	NONE	OFF	ON	
31NT1-31	NONE	ON	ON	
31NT1-4	MOM OFF	NONE	ON	L192 10A 125, <u>250</u> , 277 VAC 1/4HP 125 VAC, 1/2HP <u>250</u> , 277 VAC 3A 125 VAC "L" <div>CE UL CS</div>
31NT1-5	MOM ON	OFF	ON	
31NT1-6	MOM ON	NONE	OFF	
31NT1-7	MOM ON	OFF	MOM ON	
31NT1-8	MOM ON	NONE	ON	
31NT1-51	NONE	ON	MOM ON	
31NT1-61	MOM ON	OFF	NONE	



- NOTES
- 1 - SWITCH WILL WITHSTAND TEMPERATURE OF 160°F CONTINUOUSLY AT FULL RATED LOAD
  - 2 - MICRO SWITCH CAT. LIST. MARKED ON SIDE OF SWITCH
  - 3 - FURNISHED UNASSEMBLED
  - 4 - APPLIES ONLY TO "ON" AND "MOMENTARY ON" POSITIONS

THIRD ANGLE PROJECTION	
SCALE	FULL
DO NOT SCALE PRINT	
UNLESS OTHERWISE SPECIFIED TOLERANCES ARE	
ONE PLACE	(.0) ±.030
TWO PLACE	(.00) ±.015
THREE PLACE	(.000) ±.005
ANGLES	±
WEIGHT	.07 LB APPROX

ANSI Y14.5M-1982 APPLIES