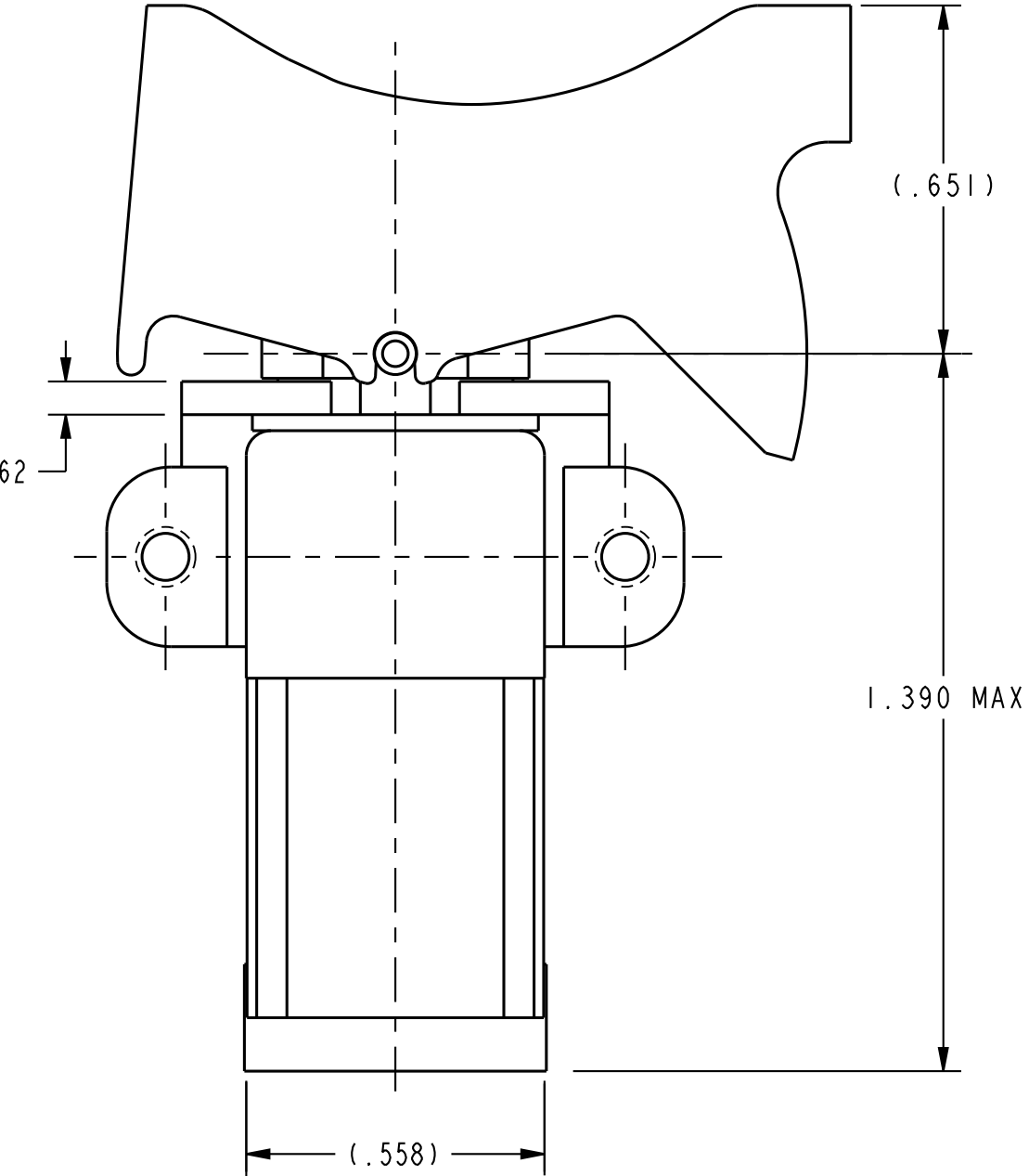
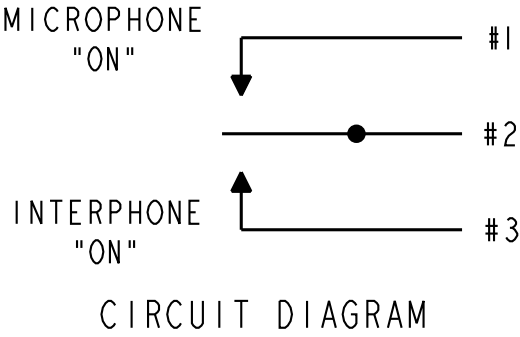


FO-55112-B

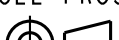
HONEYWELL
PART NUMBER
31TW2 SERIES CHART 1

REV	DOCUMENT	CHANGED BY	CHECK
12	0093066	PMH 17SEP12	CMH

FAA-PMA LISTING 7	CATALOG LISTING	CIRCUIT MADE WITH TOGGLE LEVER IN			ELECTRICAL DATA .1A 30VDC (RESISTIVE)
		MICROPHONE SIDE 1 - 2	CENTER	INTERPHONE SIDE 2 - 3	
FAA-PMA	31TW2-207	MOM ON	OFF	MOM ON	
	31TW2-205	MOM ON	OFF	ON	
FAA-PMA	31TW2-62 5	MOM ON	OFF	NONE	



- NOTES
- 1 - TERMINATION WILL ACCEPT CRIMP CONTACTS CONFORMING TO M39029/1-101
 - 2 - ACTUATION TORQUE FOR MOMENTARY ACTION: 1.2 IN-LBS MAX
ACTUATION TORQUE FOR MAINTAINED ACTION: 1.5 IN-LBS MAX
 - 3 - TORQUES APPLY OVER A TEMPERATURE RANGE OF +5°F TO +140°F
 - 4 - SWITCHES MEET THE REQUIREMENTS OF MIL-S-83731 EXCEPT AS MODIFIED BY THIS DRAWING
 - 5 - TERMINAL NO.3 HOLE IS PLUGGED
 - 6 - SILVER CONTACTS
 - 7 - FOR MANUFACTURING DETAIL SEE THE CORRESPONDING ASSEMBLY DRAWING FOR EACH LISTING FOR FAA-PMA.

DESIGN UNITS: INCH TOLERANCES UNLESS NOTED: NO PLACES X ± .030 ONE PLACE .X ± .015 TWO PLACE .XX ± .005 THREE PLACE .XXX ± FOUR PLACE .XXXX ± ANGLES X ± 3' THIRD ANGLE PROJECTION 		DRAWN	DLT	01JUL02	Honeywell				
		CHECK	SAV	01JUL02					
		THIS DRAWING COVERS A PROPRIETARY ITEM AND IS THE PROPERTY OF HONEYWELL. THIS DRAWING IS NOT TO BE COPIED OR USED WITHOUT THE PERMISSION OF HONEYWELL.			TITLE SWITCH,TOGGLE				
		INTERPRET PER ANSI Y14.5M-1982 OTHER HONEYWELL ENGINEERING STANDARDS MAY APPLY			SIZE C	TYPE I	DRAWING NAME 31TW2 SERIES CHART 1		
Pro/ENGINEER 2D			SCALE 3:1	WEIGHT .0625 LBS MAX		SHEET 1 OF 1			