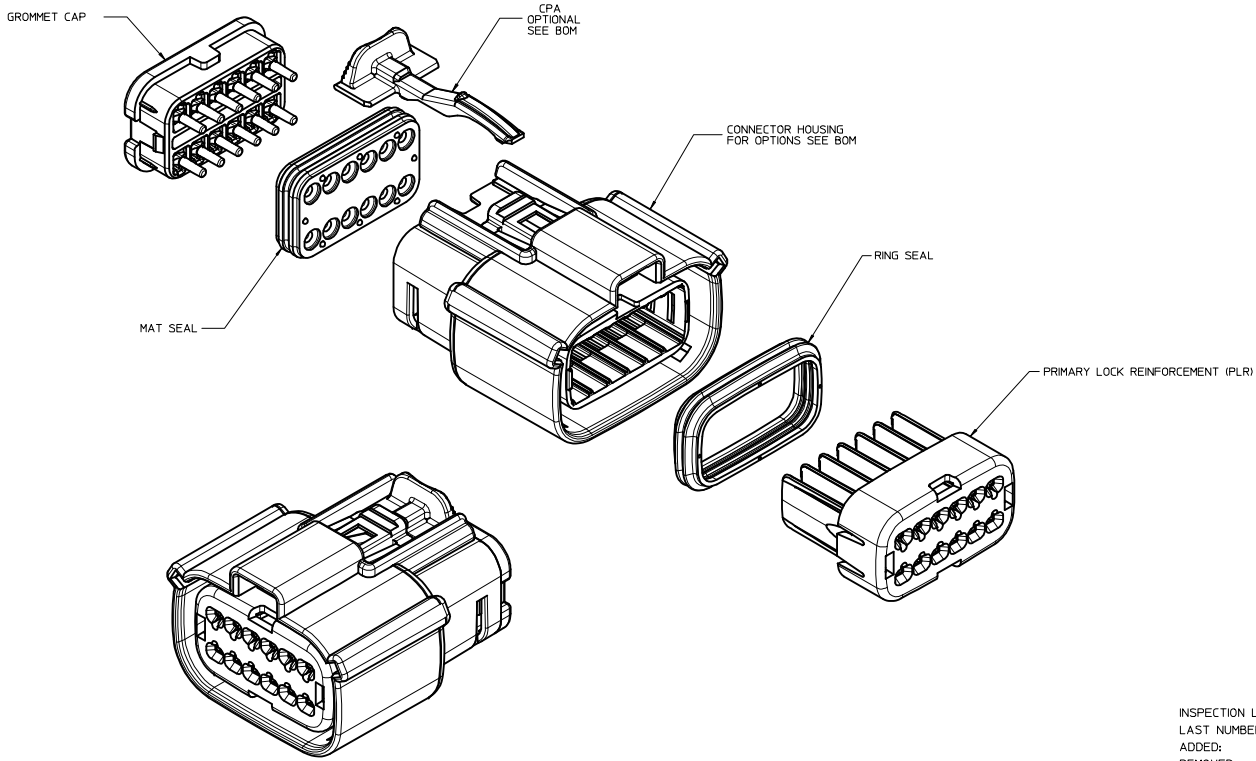


TABLE OF CONTENTS	
SHEET NO.	SHEET DESCRIPTION
1	NOTES
2	KEY CONFIGURATIONS
3	RECEPTACLE SEALED ASSEMBLY
4	BACKSHELL NOTES
5	BACKSHELL
6	BACKSHELL CONFIGURATIONS
7-9	BOM



NOTES: VALID UNLESS OTHERWISE SPECIFIED

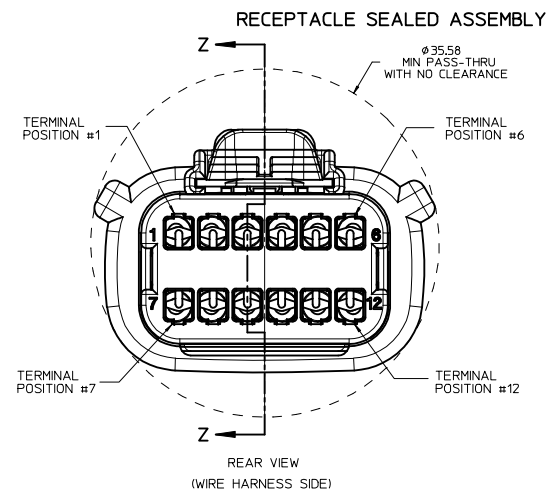
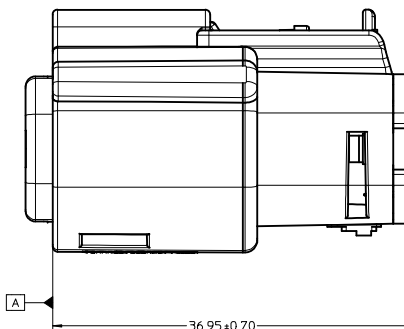
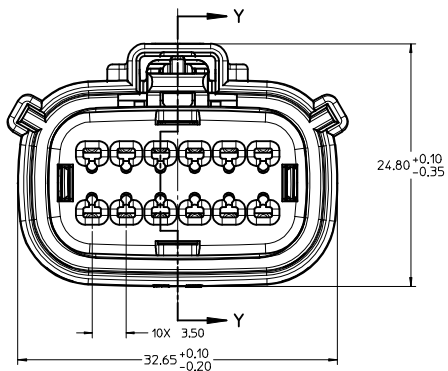
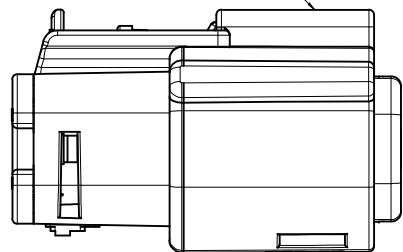
1. GENERAL:
 a. APPLICATION SPECIFICATION SEE: AS-33472-100
 -CONTAINS: PRODUCT INTRODUCTION, PRODUCT SUMMARY, CONNECTOR ASSEMBLY, PACKAGING INFORMATION, CONNECTOR MATING, SERVICE INSTRUCTIONS, ELECTRICAL CONTINUITY CHECKING, CRIMPING, AND TROUBLESHOOTING.
 -DESIGNED TO MATE WITH DEVICE CONNECTION AS SPECIFIED IN DRAWING EWCAP 150-S-012-2-201, AVAILABLE AT <http://ewcap.uscarteams.org/>.
 -DESIGNED TO MATE WITH BLADE SEALED ASSEMBLY AS SPECIFIED IN DRAWING SD-33482-121
 -FOR 1.5mm RECEPTACLE TERMINALS TO BE USED WITH THIS ASSEMBLY, SEE MOLEX DRAWING SD-33012-002.
 -SYSTEM TO BE USED WITH WIRE WITHIN DIAMETER RANGE OF 12 mm TO 2.69 mm.
 -ASSEMBLY SHIPPED WITH PLR AND CPA IN PRE-LOCK POSITION (SEE SECTION Z-Z PRE-LOCK).
 -IN THE EVENT THAT THE PLR IS FOUND IN THE SEATED (FINAL LOCK) POSITION, REFER TO MOLEX SPECIFICATION PS-34646-001, AVAILABLE AT www.molex.com <http://www.molex.com>
 -ASSEMBLY CONFORMS TO SAE/USCAR-2 REV.4 WITH THE FOLLOWING EXCEPTIONS: ENGAGEMENT FORCE TO MOVE CPA FROM PRE-LOCK TO FINAL LOCK POSITION WHEN UNMATED: 40N MIN. DISENGAGEMENT FORCE TO MOVE CPA FROM FINAL LOCK TO PRE-LOCK POSITION: 3N MIN, 40N MAX. TERMINAL INSERTION FORCE FOR WIRE DIAMETER ABOVE 2.5mm NOT EXCEEDING 2.69mm SHALL NOT EXCEED 40 NEWTONS.
 b. PRODUCT SPECIFICATION SEE: PS-33472-000
 CONTAINS: PRODUCT INTRODUCTION, PRODUCT SUMMARY, RATINGS (CURRENT, TEMPERATURE, SEALING, AND FLAMMABILITY), AND PRODUCT VALIDATION
 c. PACKAGING SPECIFICATION PER MOLEX DRAWING: PK-31300-903
 d. PARTS MUST BE IN COMPLIANCE TO MOLEX CHEMICAL SUBSTANCES FOR PRODUCTS AND PACKAGING SPECIFICATION ES-40000-5016
 e. DATA MUST BE SUBMITTED UNDER THE MOLEX PART NUMBER TO IMDS (COMPANY ID#13255)
 f. FOR INFORMATION ON 2X6 RECEPTACLE SEALED ASSEMBLY WITH CLIP/SLOT SEE SD-33472-131
2. DESIGN - MATERIALS:
 a. SEE BOM TABLE
3. DESIGN - GEOMETRY:
 a. THIS IS A 100% CAD GENERATED PART. THE CAD MATHEMATICAL DATA IS THE MASTER FOR THIS PART. FOR DIMENSIONAL OR ANY INFORMATION NOT SHOWN ON THIS DRAWING, ANALYZE THE CAD MODEL.
 b. GEOMETRIC DIMENSIONS AND TOLERANCES PER ASME Y14.5M - 1994
 c. EDGES AND UNDIMENSIONED DETAILS PER ISO13715
 d. CORNERS SHOWN AS SHARP TO BE R 0.2 MAX.
 e. LETTERING SHALL BE 0.5 MAX RAISED IN 0.25 MAX RECESS PAD. THIS INCLUDES RECYCLING CODE, CAVITY ID, VENDOR IDENTIFICATION, AND CUSTOMER MATERIAL NUMBER.
 f. VISUAL DEFECTS SHALL MEET COSMETIC STANDARD PS-45499-002 (Class B).
 g. LASER MARKING: TBD

INSPECTION LOG
 LAST NUMBER USED:
 ADDED:
 REMOVED:

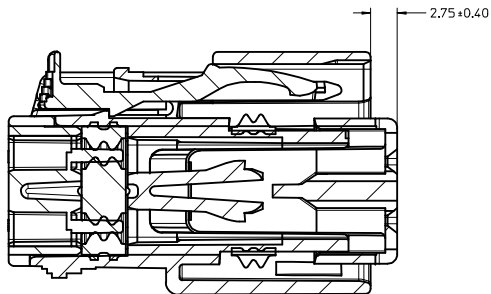
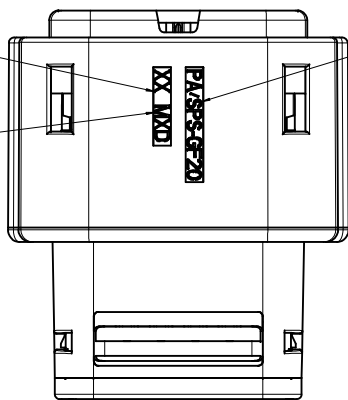
T10	ADD NEW P/N 33472-1288 33472-1289
T9	ADD NEW P/N 33472-1287
T8	ADD NEW P/N 33472-1286
T7	UPDATED BACKSHELL INFORMATION
T6	UPDATED VIEWSETS & NOTES
T5	RENAMED BACKSHELLS
T4	ADD NEW P/N 33472-1283 33472-1284 33472-1285
T3	ADDED CPA CALL OUT TO P/N 33472-1282
T2	ADD NEW P/N 33472-1282
T1	ADDED BACKSHELLS
T	ADD NEW P/N 33472-1281
S	ADD NEW P/N 33472-1279 33472-1280
R	ADD NEW P/N 33472-1278
O	REDRAWN
REV	DESCRIPTION

ENTER DESCRIPTION DEC NO: UAU2014-0615 DRAWN BY: 2013/10/15 CHKD: APPR: IKOSHY 2013/10/31 REV: T10	QUALITY SYMBOLS	GENERAL TOLERANCES (UNLESS SPECIFIED)	DIMENSION STYLE	SCALE	DESIGN UNITS	THIRD ANGLE PROJECTION	TITLE
	▽=0	4 PLACES ± --- ± ---	MM ONLY	3:1	METRIC	☉ □	MX150 2X6 RECEPTACLE SEALED ASSEMBLY MAT SEAL
	▽=0	3 PLACES ± --- ± ---					molex
	▽=0	2 PLACES ± 0.10 ± ---					DOCUMENT NO. SD-33472-121 SHEET NO. 1 OF 9
		1 PLACE ± 0.3 ± ---					
		0 PLACE ± ±					
		ANGULAR ± 3 °					
		DRAFT WHERE APPLICABLE MUST REMAIN WITHIN DIMENSIONS					
			MATERIAL NO. SEE BOM				
			SIZE D				

LASER MARKING ON THIS SURFACE
SEE NOTE 3g.

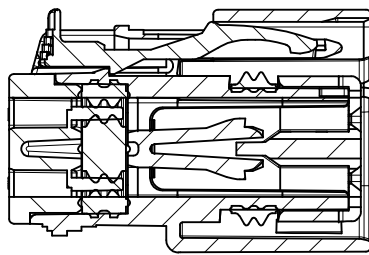


MOLD CAVITY CODE
LOCATION CODE
RECYCLE CODE



PRIMARY LOCK REINFORCEMENT (PLR) SHOWN
IN PRE-STAGE POSITION

SECTION Z-Z

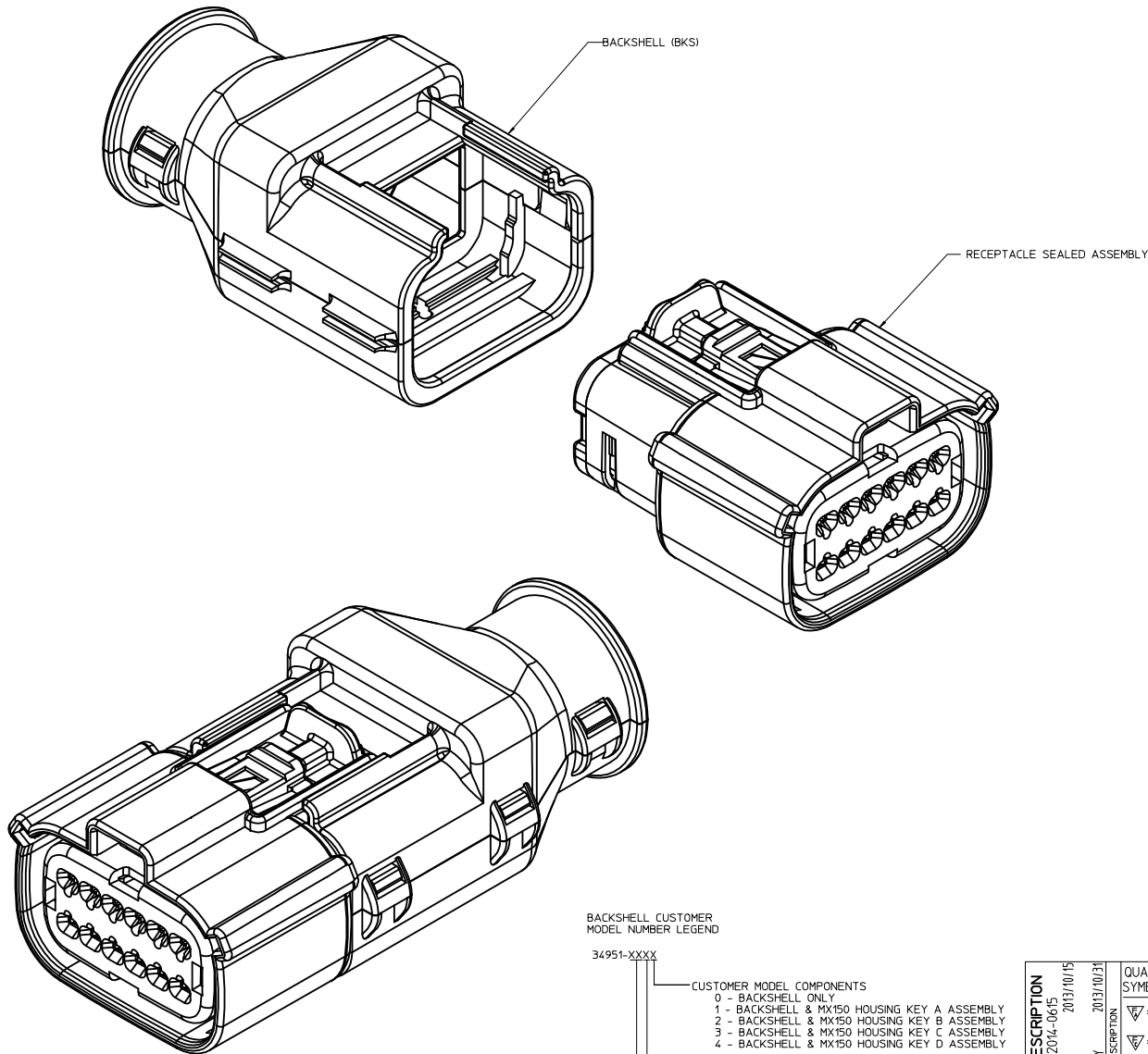


PRIMARY LOCK REINFORCEMENT (PLR) SHOWN
IN FINAL-LOCK POSITION

SECTION Y-Y

ENTER DESCRIPTION REC NO: UAU2014-0615 DRAWN BY CHKD: APPR: WOSHY T10 REV DESCRIPTION	QUALITY SYMBOLS ∇=0 ∇=0 ∇=0		GENERAL TOLERANCES (UNLESS SPECIFIED) mm INCH 4 PLACES ± --- ± --- 3 PLACES ± --- ± --- 2 PLACES ± 0.10 ± --- 1 PLACE ± 0.3 ± --- 0 PLACE ± ±		DIMENSION STYLE MM ONLY		SCALE 4:1		DESIGN UNITS METRIC		THIRD ANGLE PROJECTION	
	DRAWN BY D. MARCOUX		DATE 06-13-02		TITLE MX150 2X6 RECEPTACLE SEALED ASSEMBLY MAT SEAL		MATERIAL NO. SEE BOM		DOCUMENT NO. SD-33472-121		SHEET NO. 3 OF 9	
	CHECKED BY D. GRIFFITHS		DATE 06-13-02		APPROVED BY F. HOLUB		DATE 06-13-02		THIS DRAWING CONTAINS INFORMATION THAT IS PROPRIETARY TO MOLEX INCORPORATED AND SHOULD NOT BE USED WITHOUT WRITTEN PERMISSION			
	ANGULAR ± 3 ° DRAFT WHERE APPLICABLE MUST REMAIN WITHIN DIMENSIONS		SIZE D									

BACKSHELL NOTES



BACKSHELL NOTES: VALID UNLESS OTHERWISE SPECIFIED

1. GENERAL:

- a. APPLICATION SPECIFICATION SEE: AS-34951-001
 - DESIGNED TO MATE WITH RECEPTACLE SEALED ASSEMBLY SPECIFIED IN MOLEX DRAWING SD-33472-121.
 - SYSTEM TO BE USED WITH WIRE WITH DIAMETER RANGE OF 1.2mm TO 2.69mm.
 - COMPONENTS ARE OPTIONAL AND MUST BE PURCHASED SEPERATELY.
 - BACKSHELL DESIGN IS OWNED BY SCHLEMMER.
 - FOR ADDITIONAL INFORMATION SEE THE BACKSHELL COMPONENT DRAWING SD-34951-0001.

BACKSHELL CUSTOMER MODEL NUMBER LEGEND

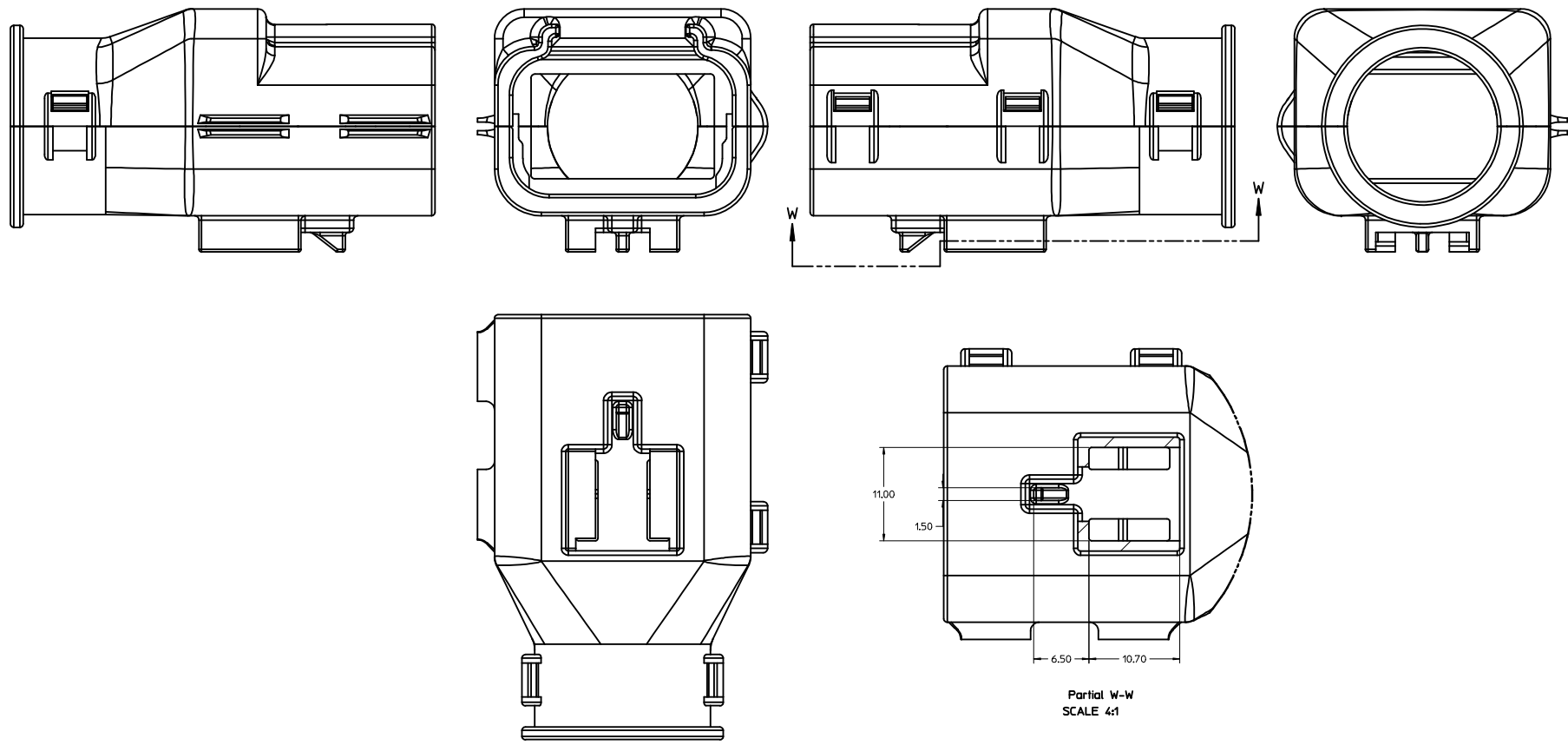
34951-XXXX

- CUSTOMER MODEL COMPONENTS
 - 0 - BACKSHELL ONLY
 - 1 - BACKSHELL & MX150 HOUSING KEY A ASSEMBLY
 - 2 - BACKSHELL & MX150 HOUSING KEY B ASSEMBLY
 - 3 - BACKSHELL & MX150 HOUSING KEY C ASSEMBLY
 - 4 - BACKSHELL & MX150 HOUSING KEY D ASSEMBLY
- BACKSHELL FEATURES
 - 1 - WITH RIBS
 - 2 - WITHOUT RIBS
- MX150 CIRCUIT SIZE 04, 06, 08, 12, 16, 20

ENTER DESCRIPTION DEC NO: UAU2014-0615 DRAWN BY: 2013/10/15 CHKD: APPR: WOSHY 2013/10/31 T10	QUALITY SYMBOLS	GENERAL TOLERANCES (UNLESS SPECIFIED)	DIMENSION STYLE	SCALE	DESIGN UNITS	THIRD ANGLE PROJECTION
	∇=0 ∇=0 ∇=0	mm INCH 4 PLACES ± --- ± --- 3 PLACES ± --- ± --- 2 PLACES ± 0.10 ± --- 1 PLACE ± 0.3 ± --- 0 PLACE ± ±	MM ONLY	4:1	METRIC	DRAWN BY: D. MARCOUX DATE: 06-13-02 CHECKED BY: DATE: D. GRIFFITHS DATE: 06-13-02 APPROVED BY: DATE: F. HOLUB DATE: 06-13-02
	ANGULAR ± 3 ° DRAFT WHERE APPLICABLE MUST REMAIN WITHIN DIMENSIONS	MATERIAL NO: SEE BOM	TITLE: MX150 2X6 RECEPTACLE SEALED ASSEMBLY MAT SEAL molex DOCUMENT NO: SD-33472-121	SHEET NO. 4 OF 9		
	THIS DRAWING CONTAINS INFORMATION THAT IS PROPRIETARY TO MOLEX INCORPORATED AND SHOULD NOT BE USED WITHOUT WRITTEN PERMISSION					

20 19 18 17 16 15 14 13 12 11 10 9 8 7 6 5 4 3 2 1

BACKSHELL
THE VIEWS ON THIS SHEET ARE
IN THE CLOSED UN-ASSEMBLED POSITION



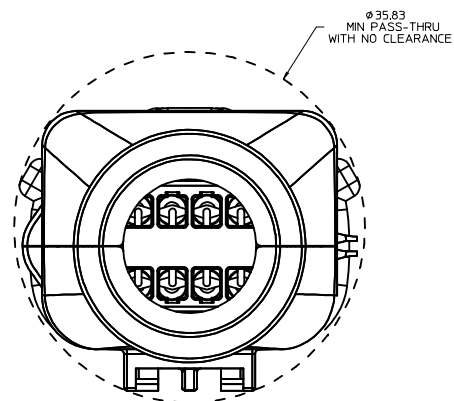
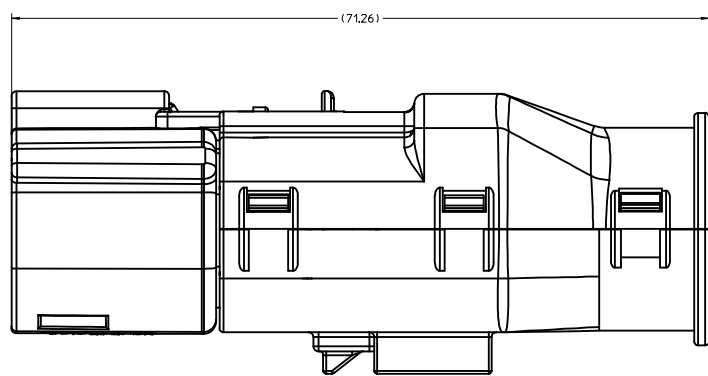
Partial W-W
SCALE 4:1

ENTER DESCRIPTION DEC NO: UAU2014-0615 DRAWN BY: CHYK APPR: WOSHY 2013/10/31 DESCRIPTION: T10	QUALITY SYMBOLS	GENERAL TOLERANCES (UNLESS SPECIFIED)	DIMENSION STYLE	SCALE	DESIGN UNITS	THIRD ANGLE PROJECTION	
	∇=0 ∇=0 ∇=0	mm INCH 4 PLACES ± --- ± --- 3 PLACES ± --- ± --- 2 PLACES ± 0.10 ± --- 1 PLACE ± 0.3 ± --- 0 PLACE ± ±	MM ONLY	4:1	METRIC	DRAWN BY: D. MARCOUX DATE: 06-13-02 CHECKED BY: DATE: D. GRIFFITHS 06-13-02 APPROVED BY: DATE: F. HOLUB 06-13-02	
	ANGULAR ± 3 ° DRAFT WHERE APPLICABLE MUST REMAIN WITHIN DIMENSIONS	MATERIAL NO.	SEE BOM	DOCUMENT NO.	SD-33472-121	SHEET NO.	5 OF 9
	THIS DRAWING CONTAINS INFORMATION THAT IS PROPRIETARY TO MOLEX INCORPORATED AND SHOULD NOT BE USED WITHOUT WRITTEN PERMISSION						

19 18 17 16 15 14 13 12 11 10 9 8 7 6 5 4 3 2 1

20 19 18 17 16 15 14 13 12 11 10 9 8 7 6 5 4 3 2 1

BACKSHELL CONFIGURATIONS



RECEPTACLE SEALED ASSEMBLY WITH RECEPTACLE BACKSHELL

ENTER DESCRIPTION REC NO: UAU2014-0615 DRAWN BY: CHYK CHKD: APPR: WKSHY 2013/10/15 2013/10/31 T10	QUALITY SYMBOLS ∇=0 ∇=0 ∇=0	GENERAL TOLERANCES (UNLESS SPECIFIED) <table border="1"> <thead> <tr> <th></th> <th>mm</th> <th>INCH</th> </tr> </thead> <tbody> <tr> <td>4 PLACES</td> <td>± .005</td> <td>± .0005</td> </tr> <tr> <td>3 PLACES</td> <td>± .005</td> <td>± .0005</td> </tr> <tr> <td>2 PLACES</td> <td>± 0.10</td> <td>± .004</td> </tr> <tr> <td>1 PLACE</td> <td>± 0.3</td> <td>± .012</td> </tr> <tr> <td>0 PLACE</td> <td>±</td> <td>±</td> </tr> </tbody> </table> ANGULAR ± 3 ° DRAFT WHERE APPLICABLE MUST REMAIN WITHIN DIMENSIONS		mm	INCH	4 PLACES	± .005	± .0005	3 PLACES	± .005	± .0005	2 PLACES	± 0.10	± .004	1 PLACE	± 0.3	± .012	0 PLACE	±	±	DIMENSION STYLE MM ONLY	SCALE 4:1	DESIGN UNITS METRIC	THIRD ANGLE PROJECTION
		mm	INCH																					
	4 PLACES	± .005	± .0005																					
	3 PLACES	± .005	± .0005																					
2 PLACES	± 0.10	± .004																						
1 PLACE	± 0.3	± .012																						
0 PLACE	±	±																						
DRAWN BY: D. MARCOUX CHECKED BY: D. GRIFFITHS APPROVED BY: F. HOLUB DATE: 06-13-02 DATE: 06-13-02 DATE: 06-13-02	TITLE MX150 2X6 RECEPTACLE SEALED ASSEMBLY MAT SEAL		MATERIAL NO. SEE BOM		DOCUMENT NO. SD-33472-121	SHEET NO. 6 OF 9																		
THIS DRAWING CONTAINS INFORMATION THAT IS PROPRIETARY TO MOLEX INCORPORATED AND SHOULD NOT BE USED WITHOUT WRITTEN PERMISSION																								
molex																								

19 18 17 16 15 14 13 12 11 10 9 8 7 6 5 4 3 2 1

ASSEMBLY DESCRIPTION	ASSEMBLY PART NUMBER	A	B	C	D	CPA	1	2	3	4	5	6	7	8	9	10	11	12	STATUS	COMMENTS	OPTIONAL ATTACHMENTS SOLD SEPERATELY		
VOID KEY	33472-1240																			NOT RECOMMENDED		34951-1210	34951-1220
KEY D W/CPA, GREEN	33472-1239				D	CPA	1					6	7							NOT RECOMMENDED		34951-1210	34951-1220
KEY C W/CPA, BROWN	33472-1238				C	CPA	1					6	7							NOT RECOMMENDED		34951-1210	34951-1220
KEY B W/CPA, LIGHT GRAY	33472-1237				B	CPA	1					6	7							SALEABLE		34951-1210	34951-1220
KEY A W/CPA, BLACK	33472-1236	A				CPA	1					6	7							SALEABLE		34951-1210	34951-1220
VOID KEY	33472-1235																						
KEY D, GREEN	33472-1234				D		1					6	7							NOT RECOMMENDED		34951-1210	34951-1220
KEY C, BROWN	33472-1233				C		1					6	7							NOT RECOMMENDED		34951-1210	34951-1220
KEY B, LIGHT GRAY	33472-1232				B		1					6	7							SALEABLE		34951-1210	34951-1220
KEY A, BLACK	33472-1231	A					1					6	7							SALEABLE		34951-1210	34951-1220
VOID KEY	33472-1230																						
KEY D W/CPA, GREEN	33472-1229				D	CPA						6	7							NOT RECOMMENDED		34951-1210	34951-1220
KEY C W/CPA, BROWN	33472-1228				C	CPA						6	7							NOT RECOMMENDED		34951-1210	34951-1220
KEY B W/CPA, LIGHT GRAY	33472-1227				B	CPA						6	7							SALEABLE		34951-1210	34951-1220
KEY A W/CPA, BLACK	33472-1226	A				CPA						6	7							SALEABLE		34951-1210	34951-1220
VOID KEY	33472-1225																						
KEY D, GREEN	33472-1224				D							6	7							NOT RECOMMENDED		34951-1210	34951-1220
KEY C, BROWN	33472-1223				C							6	7							NOT RECOMMENDED		34951-1210	34951-1220
KEY B, LIGHT GRAY	33472-1222				B							6	7							SALEABLE		34951-1210	34951-1220
KEY A, BLACK	33472-1221	A										6	7							SALEABLE		34951-1210	34951-1220
VOID KEY	33472-1220																						
KEY D W/CPA, GREEN	33472-1219				D	CPA						6								NOT RECOMMENDED		34951-1210	34951-1220
KEY C W/CPA, BROWN	33472-1218				C	CPA						6								NOT RECOMMENDED	SEE P/N 33472-1260	34951-1210	34951-1220
KEY B W/CPA, LIGHT GRAY	33472-1217				B	CPA						6								SALEABLE	SEE P/N 33472-1259	34951-1210	34951-1220
KEY A W/CPA, BLACK	33472-1216	A				CPA						6								SALEABLE		34951-1210	34951-1220
VOID KEY	33472-1215																						
KEY D, GREEN	33472-1214				D							6								NOT RECOMMENDED		34951-1210	34951-1220
KEY C, BROWN	33472-1213				C							6								NOT RECOMMENDED		34951-1210	34951-1220
KEY B, LIGHT GRAY	33472-1212				B							6								SALEABLE		34951-1210	34951-1220
KEY A, BLACK	33472-1211	A										6								SALEABLE		34951-1210	34951-1220
VOID KEY	33472-1210																						
KEY D W/CPA, GREEN	33472-1209				D	CPA														NOT RECOMMENDED	SEE P/N 33472-1260	34951-1210	34951-1220
KEY C W/CPA, BROWN	33472-1208				C	CPA														NOT RECOMMENDED	SEE P/N 33472-1259	34951-1210	34951-1220
KEY B W/CPA, LIGHT GRAY	33472-1207				B	CPA														SALEABLE		34951-1210	34951-1220
KEY A W/CPA, BLACK	33472-1206	A				CPA														SALEABLE		34951-1210	34951-1220
VOID KEY	33472-1205																						
KEY D, GREEN	33472-1204				D															NOT RECOMMENDED	SEE P/N 33472-1254	34951-1210	34951-1220
KEY C, BROWN	33472-1203				C															NOT RECOMMENDED	SEE P/N 33472-1253	34951-1210	34951-1220
KEY B, LIGHT GRAY	33472-1202				B															SALEABLE		34951-1210	34951-1220
KEY A, BLACK	33472-1201	A																		SALEABLE		34951-1210	34951-1220

BLOCKED TERMINAL		
CAVITY WITH A NUMBER INDICATES BLOCKED TERMINAL POSITION CAVITY WITHOUT A NUMBER INDICATES OPEN TERMINAL POSITION		
DESCRIPTION	COLOR	MATERIAL
MAT SEAL	LIGHT BLUE	INHERENTLY LUBRICATED SILICONE
RING SEAL	GREEN	INHERENTLY LUBRICATED SILICONE
PLR	NATURAL	SPS/NYLON GF20
GROMMET CAP	BLACK	SPS/NYLON GF20
CPA	RED	PBT GF20
HOUSING KEYING OPTION D	STONE GRAY	SPS/NYLON GF20
HOUSING KEYING OPTION C	DARK GRAY	SPS/NYLON GF20
HOUSING KEYING OPTION D	GREEN	SPS/NYLON GF20
HOUSING KEYING OPTION C	BROWN	SPS/NYLON GF20
HOUSING KEYING OPTION B	LIGHT GRAY	SPS/NYLON GF20
HOUSING KEYING OPTION A	BLACK	SPS/NYLON GF20

ABBREVIATION	COMPONENT
A	HOUSING KEY A
B	HOUSING KEY B
C	HOUSING KEY C
D	HOUSING KEY D
GC	GROMMET CAP
M	MAT SEAL
R	RING SEAL
P	PLR
CPA	CPA
BKS	BACKSHELL

ENTER DESCRIPTION DEC NO. 04/2014-0615 DRAWN BY: 2013/10/15 CHKD: APPR: VKSHY REV: 10	QUALITY SYMBOLS ∇=0 ∇=0 ∇=0	GENERAL TOLERANCES (UNLESS SPECIFIED) mm INCH 4 PLACES ± --- ± --- 3 PLACES ± 0.10 ± --- 2 PLACES ± 0.3 ± --- 1 PLACE ± ± --- 0 PLACE ± ±	DIMENSION STYLE MM ONLY	SCALE DESIGN UNITS METRIC	THIRD ANGLE PROJECTION
		DRAFT WHERE APPLICABLE MUST REMAIN WITHIN DIMENSIONS	MATERIAL NO. SEE BOM	DATE D. MARCOUX 06-13-02 D. GRIFFITHS 06-13-02 F. HOLUB 06-13-02	TITLE MX150 2X6 RECEPTACLE SEALED ASSEMBLY MAT SEAL

ASSEMBLY DESCRIPTION	ASSEMBLY PART NUMBER	A	B	C	D	CPA	1	2	3	4	5	6	7	8	9	10	11	12	STATUS	COMMENTS	BACKSHELL WITH RIBS	BACKSHELL WITHOUT RIBS	
KEY A, BLACK	33472-1281	A					1			4					9			12	SALEABLE		34951-1210	34951-1220	
KEY A, BLACK	33472-1280	A						2					7						SALEABLE		34951-1210	34951-1220	
KEY A, BLACK	33472-1279	A											7					11	SALEABLE		34951-1210	34951-1220	
KEY B W/CPA, LIGHT GRAY	33472-1278	A	B			CPA										10	11		SALEABLE		34951-1210	34951-1220	
KEY A, BLACK	33472-1277	A					1						7					12	SALEABLE		34951-1210	34951-1220	
KEY A, BLACK	33472-1276	A					1					6							SALEABLE		34951-1210	34951-1220	
KEY A, BLACK	33472-1275	A					1	2	3	4	5	6		8					SALEABLE		34951-1210	34951-1220	
KEY A W/CPA, BLACK	33472-1274	A				CPA						6					11	12	SALEABLE		34951-1210	34951-1220	
KEY A, BLACK	33472-1273	A										6			9	10	11	12	SALEABLE		34951-1210	34951-1220	
KEY A W/CPA, BLACK	33472-1272	A				CPA						6			9	10	11	12	SALEABLE		34951-1210	34951-1220	
KEY A W/CPA, BLACK	33472-1271	A				CPA				4		6				10	11	12	SALEABLE		34951-1210	34951-1220	
KEY A W/CPA, BLACK	33472-1270	A				CPA							7		9			11	12	SALEABLE		34951-1210	34951-1220
KEY A W/CPA, BLACK	33472-1269	A				CPA	1	2		4		6	7	8		10	11	12	SALEABLE		34951-1210	34951-1220	
KEY A W/CPA, BLACK	33472-1268	A				CPA	1						7						SALEABLE		34951-1210	34951-1220	
KEY D W/CPA, STONE GRAY	33472-1267	A			D	CPA	1					6	7						SALEABLE		34951-1210	34951-1220	
KEY A W/CPA, BLACK	33472-1266	A				CPA												11	12	SALEABLE		34951-1210	34951-1220
KEY D W/CPA, STONE GRAY	33472-1265	A			D	CPA													SALEABLE		34951-1210	34951-1220	
KEY C W/CPA, DARK GRAY	33472-1264	A			C	CPA													SALEABLE		34951-1210	34951-1220	
KEY B W/CPA, LIGHT GRAY	33472-1263	A	B			CPA													SALEABLE		34951-1210	34951-1220	
KEY A W/CPA, BLACK	33472-1262	A				CPA								8	9	10	11	12	SALEABLE		34951-1210	34951-1220	
KEY A, BLACK	33472-1261	A														9	10		SALEABLE		34951-1210	34951-1220	
KEY D W/CPA, STONE GRAY	33472-1260	A			D	CPA													SALEABLE		34951-1210	34951-1220	
KEY C W/CPA, DARK GRAY	33472-1259	A			C	CPA													SALEABLE		34951-1210	34951-1220	
KEY A, BLACK	33472-1258	A					1	2	3	4	5	6	7	8	9	10	11	12	SALEABLE		34951-1210	34951-1220	
KEY A, BLACK	33472-1257	A												8					SALEABLE		34951-1210	34951-1220	
KEY A W/CPA, BLACK	33472-1256	A				CPA										9	10	11	12	SALEABLE		34951-1210	34951-1220
KEY A W/CPA, BLACK	33472-1255	A				CPA												11	12	SALEABLE		34951-1210	34951-1220
KEY D, STONE GRAY	33472-1254	A			D														SALEABLE		34951-1210	34951-1220	
KEY C, DARK GRAY	33472-1253	A			C														SALEABLE		34951-1210	34951-1220	
KEY A W/CPA, BLACK	33472-1252	A				CPA										9	10		SALEABLE		34951-1210	34951-1220	
KEY A, BLACK	33472-1251	A										6							SALEABLE		34951-1210	34951-1220	
VOID KEY	33472-1250																						
KEY D W/CPA, GREEN	33472-1249	A			D	CPA	1					6	7						NOT RECOMMENDED		34951-1210	34951-1220	
KEY C W/CPA, BROWN	33472-1248	A			C	CPA	1					6	7						NOT RECOMMENDED		34951-1210	34951-1220	
KEY B W/CPA, LIGHT GRAY	33472-1247	A	B			CPA	1					6	7						SALEABLE		34951-1210	34951-1220	
KEY A W/CPA, BLACK	33472-1246	A				CPA	1					6	7						SALEABLE		34951-1210	34951-1220	
VOID KEY	33472-1245																						
KEY D, GREEN	33472-1244	A			D		1					6	7						NOT RECOMMENDED		34951-1210	34951-1220	
KEY C, BROWN	33472-1243	A			C		1					6	7						NOT RECOMMENDED		34951-1210	34951-1220	
KEY B, LIGHT GRAY	33472-1242	A	B				1					6	7						SALEABLE		34951-1210	34951-1220	
KEY A, BLACK	33472-1241	A					1					6	7						SALEABLE		34951-1210	34951-1220	

BLOCKED TERMINAL
 CAVITY WITH A NUMBER INDICATES BLOCKED TERMINAL POSITION
 CAVITY WITHOUT A NUMBER INDICATES OPEN TERMINAL POSITION

DESCRIPTION	COLOR	MATERIAL
MAT SEAL	LIGHT BLUE	INHERENTLY LUBRICATED SILICONE
RING SEAL	GREEN	INHERENTLY LUBRICATED SILICONE
PLR	NATURAL	SPS/NYLON GF20
GROMMET CAP	BLACK	SPS/NYLON GF20
CPA	RED	PBT GF20
HOUSING KEYING OPTION D	STONE GRAY	SPS/NYLON GF20
HOUSING KEYING OPTION C	DARK GRAY	SPS/NYLON GF20
HOUSING KEYING OPTION D	GREEN	SPS/NYLON GF20
HOUSING KEYING OPTION C	BROWN	SPS/NYLON GF20
HOUSING KEYING OPTION B	LIGHT GRAY	SPS/NYLON GF20
HOUSING KEYING OPTION A	BLACK	SPS/NYLON GF20

ABBREVIATION	COMPONENT
A	HOUSING KEY A
B	HOUSING KEY B
C	HOUSING KEY C
D	HOUSING KEY D
GC	GROMMET CAP
H	MAT SEAL
R	RING SEAL
P	PLR
CPA	CPA
BKS	BACKSHELL

ENTER DESCRIPTION DEC NO. JAU2014-0615 DRAWN BY CHECKED BY APPR: VKOSHY 2013/10/31 T10	QUALITY SYMBOLS ∇=0 ∇=0 ∇=0	GENERAL TOLERANCES (UNLESS SPECIFIED) mm INCH 4 PLACES ± .010 ± .0004 3 PLACES ± .010 ± .0004 2 PLACES ± 0.10 ± .004 1 PLACE ± 0.3 ± .012 0 PLACE ± ±	DIMENSION STYLE MM ONLY DRAWN BY DATE D. MARCOUX 06-13-02 CHECKED BY DATE D. GRIFFITHS 06-13-02 APPROVED BY DATE F. HOLUB 06-13-02	SCALE DESIGN UNITS METRIC THIRD ANGLE PROJECTION	TITLE MX150 2X6 RECEPTACLE SEALED ASSEMBLY MAT SEAL molex MATERIAL NO. SEE BOM DOCUMENT NO. SD-33472-121	SHEET NO. 8 OF 9
	DRAFT WHERE APPLICABLE MUST REMAIN WITHIN DIMENSIONS					
	THIS DRAWING CONTAINS INFORMATION THAT IS PROPRIETARY TO MOLEX INCORPORATED AND SHOULD NOT BE USED WITHOUT WRITTEN PERMISSION					
	OPTIONAL ATTACHMENTS SOLD SEPARATELY					

