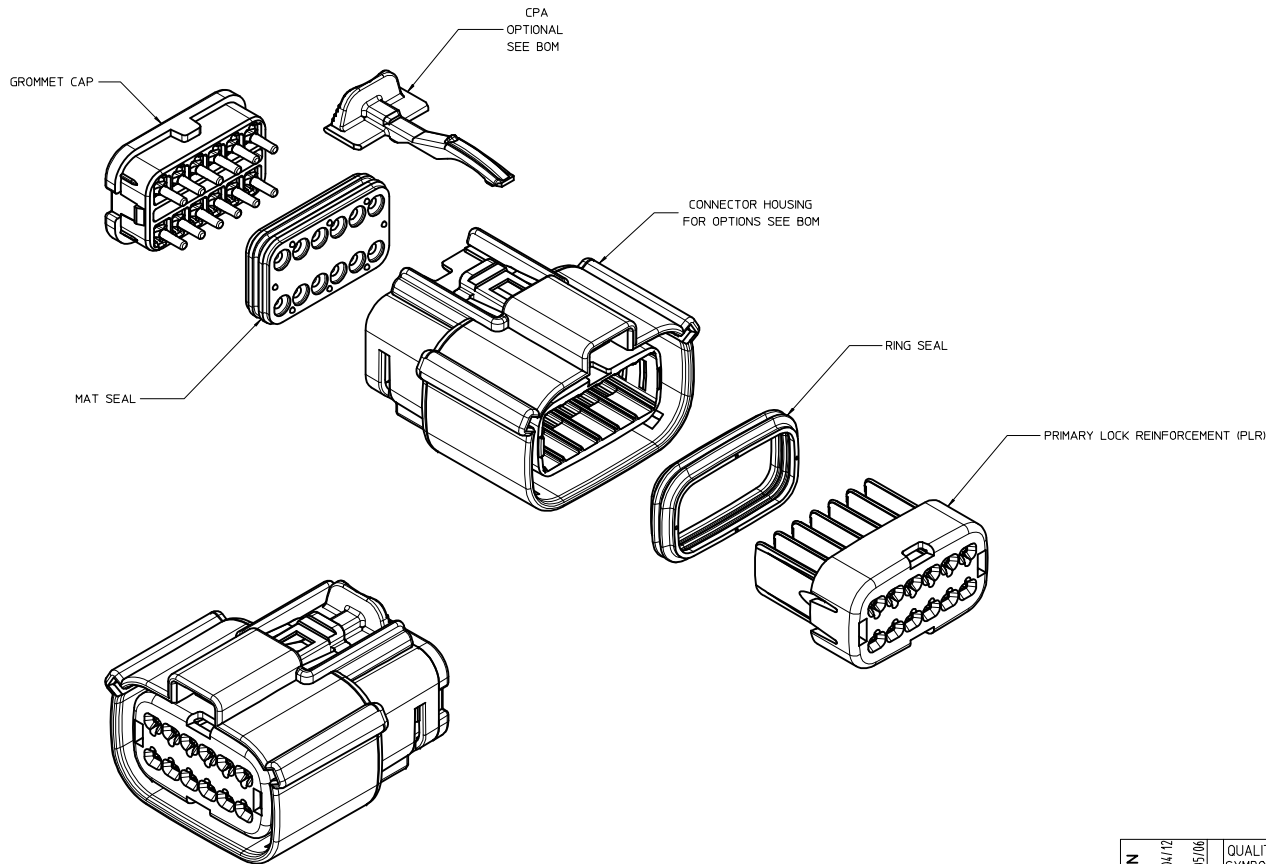


TABLE OF CONTENTS	
SHEET NO.	SHEET DESCRIPTION
1	NOTES
2	KEY CONFIGURATIONS
3	RECEPTACLE SEALED ASSEMBLY
4	BOM



NOTES: VALID UNLESS OTHERWISE SPECIFIED

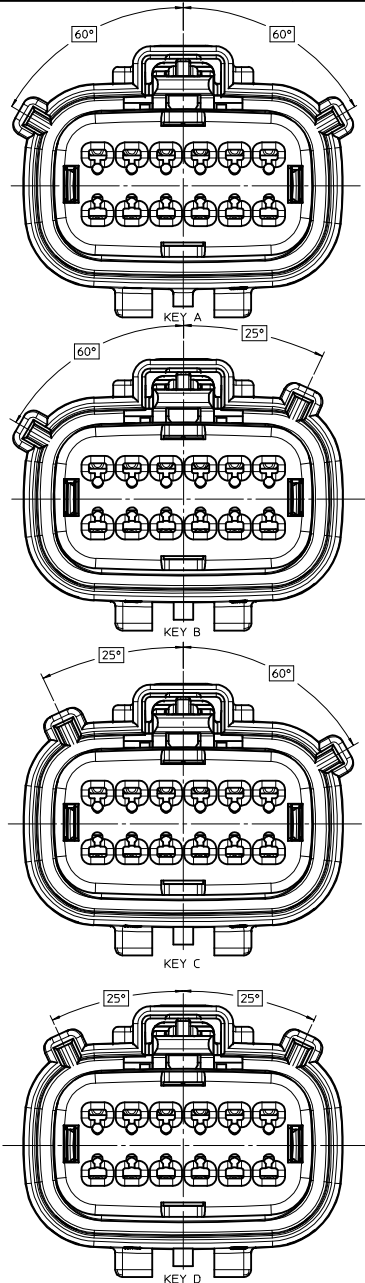
1. GENERAL:
  - a. APPLICATION SPECIFICATION SEE: AS-33472-100
    - CONTAINS: PRODUCT INTRODUCTION, PRODUCT SUMMARY, CONNECTOR ASSEMBLY, PACKAGING INFORMATION, CONNECTOR MATING, SERVICE INSTRUCTIONS, ELECTRICAL CONTINUITY CHECKING, CRIMPING, AND TROUBLESHOOTING
    - DESIGNED TO MATE WITH DEVICE CONNECTION AS SPECIFIED IN DRAWING EWCAP 150-5-012-2-201, AVAILABLE AT <http://ewcap.uscarteams.org/>
    - DESIGNED TO MATE WITH BLADE SEALED ASSEMBLY AS SPECIFIED IN DRAWING SD-33482-121
    - FOR 15mm RECEPTACLE TERMINALS TO BE USED WITH THIS ASSEMBLY. SEE MOLEX DRAWING SD-33012-002
    - SYSTEM TO BE USED WITH WIRE WITHIN DIAMETER RANGE OF 1.2 mm TO 2.69 mm.
    - ASSEMBLY SHIPPED WITH PLR AND CPA IN PRE-LOCK POSITION (SEE SECTION Z-Z PRE-LOCK).
    - IN THE EVENT THAT THE PLR IS FOUND IN THE SEALED (FINAL LOCK) POSITION, REFER TO MOLEX SPECIFICATION PS-34646-001, AVAILABLE AT www.molex.com <http://www.molex.com>
    - ASSEMBLY CONFORMS TO SAE/USCAR-2 REV.4 WITH THE FOLLOWING EXCEPTIONS: ENGAGEMENT FORCE TO MOVE CPA FROM PRE-LOCK TO FINAL LOCK POSITION WHEN UNMATED: 40N MIN.
    - DISENGAGEMENT FORCE TO MOVE CPA FROM FINAL LOCK TO PRE-LOCK POSITION: 3N MIN, 40N MAX.
    - TERMINAL INSERTION FORCE FOR WIRE DIAMETER ABOVE 2.5mm NOT EXCEEDING 2.69mm SHALL NOT EXCEED 40 NEWTONS.
  - b. PRODUCT SPECIFICATION SEE: PS-33472-000
    - CONTAINS: PRODUCT INTRODUCTION, PRODUCT SUMMARY, RATINGS (CURRENT, TEMPERATURE, SEALING, AND FLAMMABILITY), AND PRODUCT VALIDATION.
  - c. PACKAGING SPECIFICATION PER MOLEX DRAWING: PK-31300-903
  - d. PARTS MUST BE IN COMPLIANCE TO MOLEX CHEMICAL SUBSTANCES FOR PRODUCTS AND PACKAGING SPECIFICATION: ES-40000-5016
  - e. DATA MUST BE SUBMITTED UNDER THE MOLEX PART NUMBER TO IMDS (COMPANY ID#13255)
  - f. FOR INFORMATION ON 2X6 RECEPTACLE SEALED ASSEMBLY WITHOUT CLIPSLOT SEE SD-33472-121
2. DESIGN - MATERIALS:
  - a. CONNECTOR HOUSING: GROMMET CAP, PLR: SPS/NYLON 20% GLASS FILLED
  - b. MAT SEAL: INTERNALLY LUBRICATED SILICONE
3. DESIGN - GEOMETRY:
  - a. THIS IS A 100% CAD GENERATED PART, THE CAD MATHEMATICAL DATA IS THE MASTER FOR THIS PART, FOR DIMENSIONAL OR ANY INFORMATION NOT SHOWN ON THIS DRAWING, ANALYZE THE CAD MODEL.
  - b. GEOMETRIC DIMENSIONS AND TOLERANCES PER ASME Y14.5M - 1994
  - c. EDGES AND UNDIMENSIONED DETAILS PER ISO19715
  - d. CORNERS SHOWN AS SHARP TO BE R 0.2 MAX.
  - e. LETTERING SHALL BE 0.15 MAX RAISED IN 0.25 MAX RECESS PAD. THIS INCLUDES RECYCLING CODE, CAVITY ID, VENDOR IDENTIFICATION, AND CUSTOMER MATERIAL NUMBER.
  - f. VISUAL DEFECTS SHALL MEET COSMETIC STANDARD PS-45499-002 (Class B)
  - g. LASER MARKING: TBD

INSPECTION NUMBER LOG  
 LAST NUMBER USED:  
 ADDED:  
 REMOVED:

AA8	ADD NEW P/N 33472-1417
AA7	ADD NEW P/N 33472-1416
AA6	ADD NEW P/N 33472-1415
AA5	ADD NEW P/N 33472-1407 33472-1408 33472-1409 33472-1410 33472-1411 33472-1412 33472-1413 33472-1414 UPDATE STATUS 33472-1303 33472-1304 33472-1308 33472-1309 33472-1313 33472-1314 33472-1318 33472-1319
AA4	UPDATED DIMENSIONS TO MATCH MODEL
AA3	ADD NEW P/N 33472-1401 33472-1402 33472-1404 33472-1404 33472-1405 33472-1406
AA2	ADD NEW P/N 33472-1398 33472-1399 33472-1400
AA1	UPDATED NOTES
AA	ADD NEW P/N 33472-1392 33472-1393 33472-1394 33472-1395 33472-1396 33472-1397
REV	DESCRIPTION

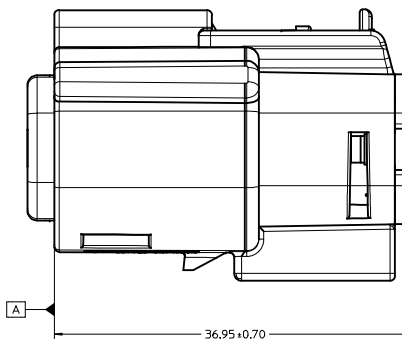
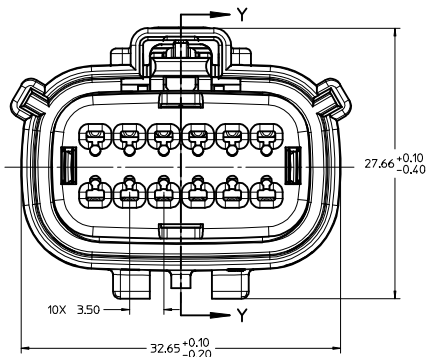
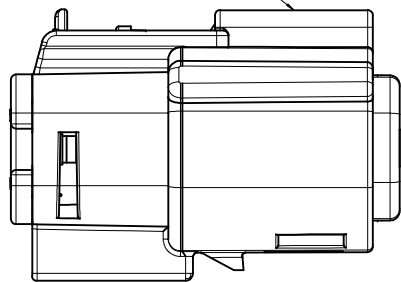
<b>ENTER DESCRIPTION</b> EEC NO: UAU2013-1573 DRAWN BY: 2013/04/12 CHYKD: APPR: IKOSHY 2013/05/06 REV:	QUALITY SYMBOLS	GENERAL TOLERANCES (UNLESS SPECIFIED)	DIMENSION STYLE	SCALE	DESIGN UNITS	THIRD ANGLE	TITLE
	▽=0	mm INCH	MM ONLY	3:1	METRIC	☉	MX150 2X6 RECEPTACLE SEALED ASSEMBLY MAT SEAL, CLIPSLOT
	▽=0	4 PLACES ± --- ± ---	D, GR1FF1THS 10-10-03				<b>molex</b>
	▽=0	3 PLACES ± --- ± ---	D, GR1FF1THS 10-10-03				DOCUMENT NO. SD-33472-131
		2 PLACES ± 0.10 ± ---	D, GR1FF1THS 10-10-03				SHEET NO. 1 OF 4
		1 PLACE ± 0.3 ± ---	APPROVED BY DATE				
		0 PLACE ± ±	D, GR1FF1THS 10-10-03				
		ANGULAR ± 3 °	MATERIAL NO.				
		DRAFT WHERE APPLICABLE MUST REMAIN WITHIN DIMENSIONS	SIZE SEE BOM				

KEY CONFIGURATIONS

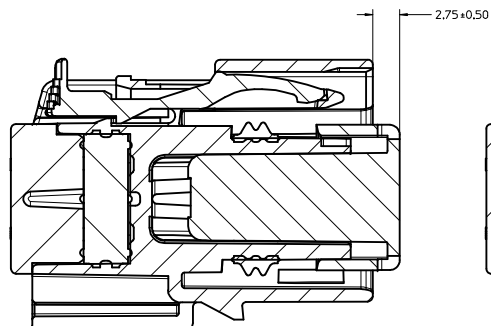
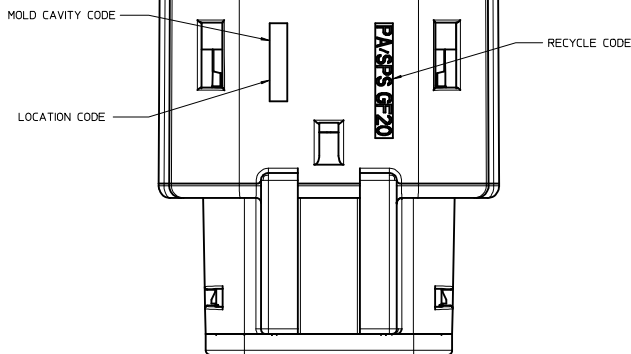
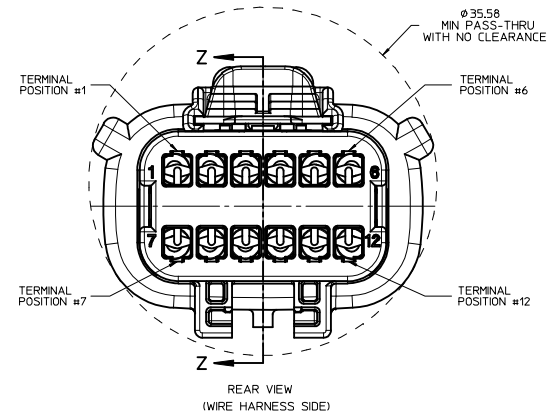


<b>ENTER DESCRIPTION</b> EEC NO. UAU2013-1573 DRAWN BY 2013/04/12 CHYK: APPR: WOSHY 2013/05/06 AA8 REVISION DESCRIPTION	QUALITY SYMBOLS	GENERAL TOLERANCES (UNLESS SPECIFIED)	DIMENSION STYLE	SCALE	DESIGN UNITS	THIRD ANGLE PROJECTION
	▽=0	mm INCH	MM ONLY	4:1	METRIC	
	▽=0	4 PLACES ± --- ± ---	D. GRIFFITHS 10-10-03	DRAWN BY DATE	TITLE	
	▽=0	3 PLACES ± --- ± ---	D. GRIFFITHS 10-10-03	CHECKED BY DATE	MX150 2X6 RECEPTACLE SEALED ASSEMBLY MAT SEAL, CLIPSLOT	
▽=0	2 PLACES ± 0.10 ± ---	D. GRIFFITHS 10-10-03	APPROVED BY DATE	DOCUMENT NO.		
▽=0	1 PLACE ± 0.3 ± ---	D. GRIFFITHS 10-10-03	MATERIAL NO.	SD-33472-131		
	0 PLACE ± ±	ANGULAR ± 3 °	SEE BOM	SHEET NO.		
		DRAFT WHERE APPLICABLE MUST REMAIN WITHIN DIMENSIONS	SIZE D	2 OF 4		
			THIS DRAWING CONTAINS INFORMATION THAT IS PROPRIETARY TO MOLEX INCORPORATED AND SHOULD NOT BE USED WITHOUT WRITTEN PERMISSION			

OPTIONAL LASER MARKING ON THIS SURFACE SEE NOTE 3g.

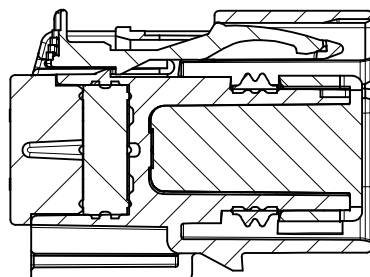


RECEPTACLE SEALED ASSEMBLY



PRIMARY LOCK REINFORCEMENT (PLR) SHOWN IN PRE-STAGED POSITION

SECTION Z-Z



PRIMARY LOCK REINFORCEMENT (PLR) SHOWN IN FINAL-LOCK POSITION

SECTION Y-Y

<b>ENTER DESCRIPTION</b> ELEC NO. UAU2013-573 DRAWN BY CHYK APPR: WOSHY 2013/04/12 2013/05/06 AAB	QUALITY SYMBOLS	GENERAL TOLERANCES (UNLESS SPECIFIED)	DIMENSION STYLE	SCALE	DESIGN UNITS	THIRD ANGLE PROJECTION
	∇=0 ∇=0 ∇=0	mm INCH 4 PLACES ± --- ± --- 3 PLACES ± --- ± --- 2 PLACES ± 0.10 ± --- 1 PLACE ± 0.3 ± --- 0 PLACE ± ±	MM ONLY	4:1	METRIC	DRAWN BY DATE D. GRIFFITHS 10-10-03 CHECKED BY DATE D. GRIFFITHS 10-10-03 APPROVED BY DATE D. GRIFFITHS 10-10-03
	ANGULAR ± 3 ° DRAFT WHERE APPLICABLE MUST REMAIN WITHIN DIMENSIONS	MATERIAL NO. SEE BOM SIZE D	TITLE MX150 2X6 RECEPTACLE SEALED ASSEMBLY MAT SEAL, CLIPSLOT molex DOCUMENT NO. SD-33472-131	SHEET NO. 3 OF 4		
	THIS DRAWING CONTAINS INFORMATION THAT IS PROPRIETARY TO MOLEX INCORPORATED AND SHOULD NOT BE USED WITHOUT WRITTEN PERMISSION					

