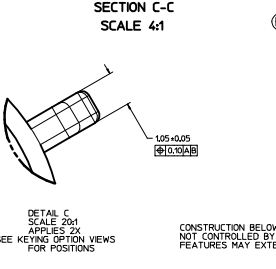
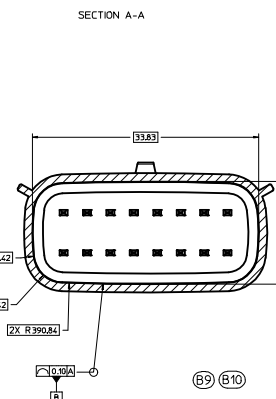
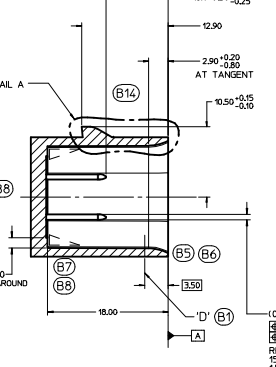
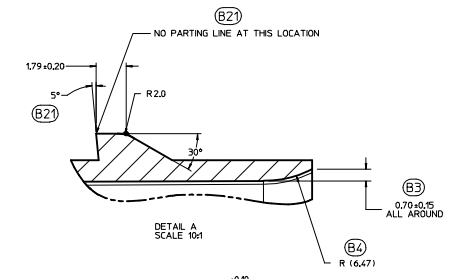


150-S-016-2-001	D	BLACK
150-S-016-2-C01	C	DK GRAY
150-S-016-2-B01	B	LT GRAY
150-S-016-2-A01	A	BLACK

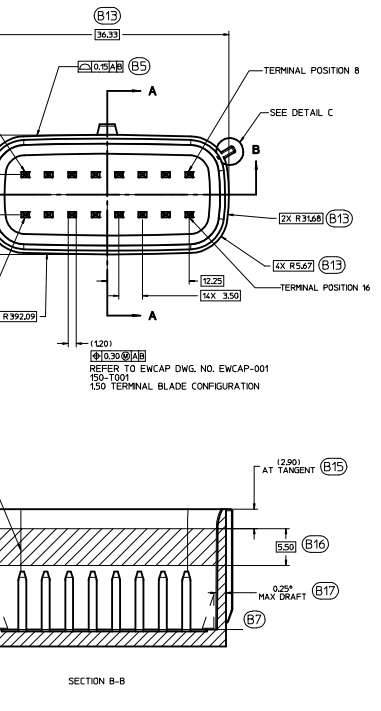
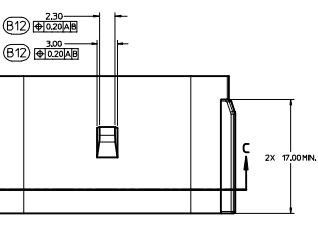
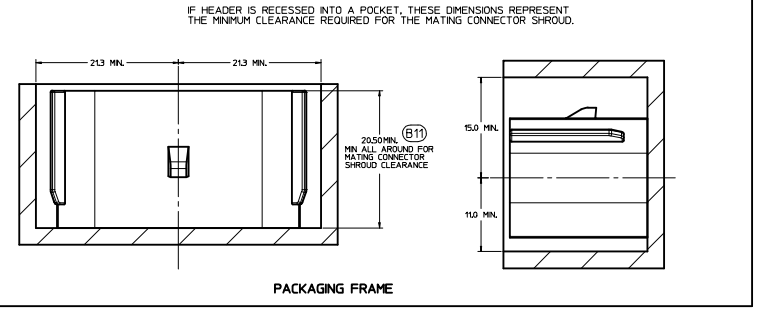
EWCAP PIN	OPTION	MATING CONNECTOR COLOR



(B19) SURFACE MUST BE FREE OF SURFACE DEFECTS AND PARTING LINES FOR SEALING ALL AROUND

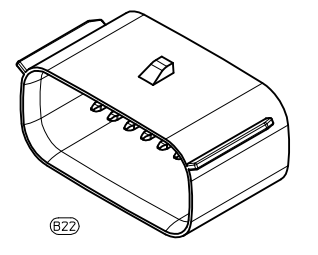
DETAIL C SCALE 20:1 APPLIES 2X SEE KEYING OPTION VIEWS FOR POSITIONS

CONSTRUCTION BELOW THIS SURFACE IS NOT CONTROLLED BY EWCAP. NO PLASTIC FEATURES MAY EXTEND ABOVE THIS SURFACE.



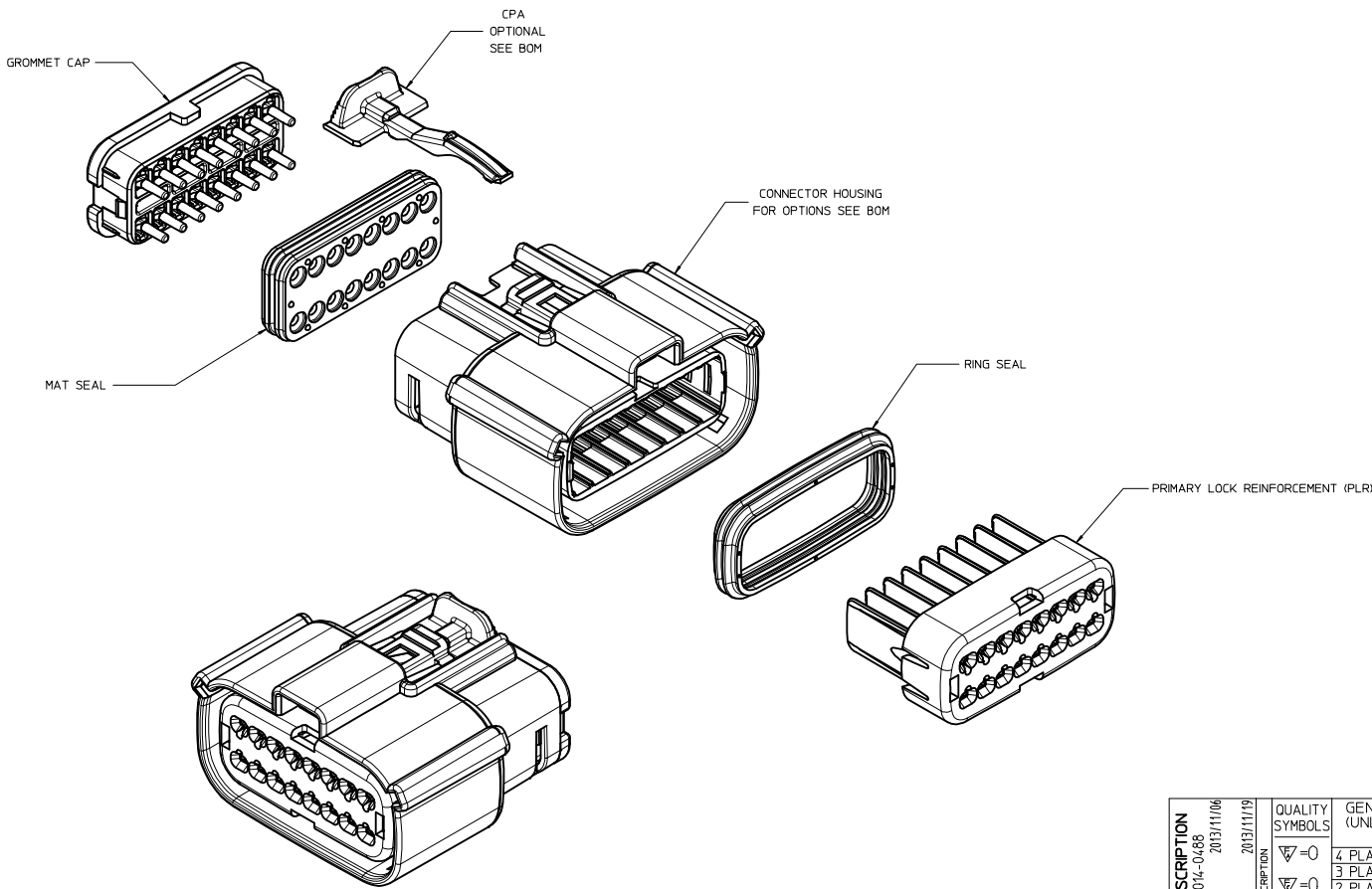
NOTICE THIS DRAWING OR PORTIONS OF IT, ARE CONTROLLED BY THE ELECTRICAL WIRING COMPONENTS APPLICATION PARTNERSHIP (EWCAP), A SUBGROUP OF THE UNITED STATES CONSORTIUM FOR AUTOMOTIVE RESEARCH LLC (USCAR). USCAR IS A PARTNERSHIP BETWEEN CHRYSLER GROUP LLC, FORD MOTOR COMPANY, AND GENERAL MOTORS CORPORATION. ANY CHANGE TO A EWCAP CONTROLLED PORTION OF THIS DRAWING, INCLUDING A "RECORD CHANGE" MUST BE APPROVED IN WRITING, BY THE RESPONSIBLE EWCAP MEMBER FROM EACH USCAR COMPANY. EACH EWCAP MEMBER AUTHORIZED TO SIGN FOR HIS OR HER COMPANY IS RESPONSIBLE FOR OBTAINING ALL NECESSARY APPROVALS WITHIN THAT COMPANY PRIOR TO SIGNING FOR APPROVAL OF THE CHANGE. EWCAP EXPRESSLY PROHIBITS ANY PARTY FROM CHANGING EITHER ANY EWCAP CONTROLLED PORTION OF THIS DRAWING OR ANY ASSOCIATED TOOLING BEFORE RECEIVING AN APPROVAL, SIGNED BY AN AUTHORIZED REPRESENTATIVE FROM EACH EWCAP PARTNER. REFERENCE TO THE SIGNED APPROVAL FORM MUST BE ENTERED IN THIS DRAWING'S CONTROL COLUMN.

- NOTES: UNLESS OTHERWISE SPECIFIED (B16)
- ALL DIMENSIONS SHOWN IN MILLIMETERS.
 - DIMENSIONING AND TOLERANCING PER ASME Y14.5M-1994
 - 0.25 RADI ON ALL CORNERS SHOWN SHARP.
 - UNSPECIFIED RADII: 0.25 EXCEPT AS NOTED.
 - STANDARD COLORS FOR POLARIZATION (SEE CHART). DEVIATION REQUIRES APPROVAL OF AUTHORIZED PERSON.
 - REFER TO "SAE/USCAR 12 CONNECTOR GUIDELINES" FOR ADDITIONAL REQUIREMENTS.
 - EXCEPT WHERE NOTED, DRAFT ON OUTSIDE SURFACES IS PERMISSIBLE WITHIN TOLERANCE.
 - SYMBOL INDICATES DRAFT DIRECTION.
 - FOR TERMINAL MATERIAL DIMENSIONAL AND COATING REQUIREMENTS AND ANY BLADE TERMINAL DESIGN INFORMATION NOT SHOWN ON THIS DRAWING SEE EWCAP DRW. NO. EWCAP-001
 - A FULL SHROUD ON THE MATING CONNECTOR IS REQUIRED TO INSURE THAT THE CONNECTOR-HEADER POLARIZATION FEATURES (OPTIONS A THRU D) WILL FUNCTION. THE FULL SHROUD ALSO PREVENTS SCRAP DAMAGE TO THE HEADER PINS. REFER TO "SAE/USCAR-12 CONNECTOR DESIGN GUIDE LINES" FOR ADDITIONAL INFORMATION.
 - REFER TO USCAVEWCAP PART LIST AS FOUND ON WEBSITE <http://www.uscar12.com>
 - THIS IS A 100% CAD GENERATED PART. THE CAD MATHEMATICAL DATA IS THE MASTER FOR THIS PART. FOR DIMENSIONAL OR ANY INFORMATION NOT SHOWN ON THIS DRAWING, ANALYZE THE CAD MODEL.



CHANGE NUMBER	REV	DESCRIPTION	DATE	BY	CHK		
	095	B22	CHANGED ISO VIEW SCALE TO 4:1 HAS 11				
	095	B21	ADDED PARTING LINE NOTE TO DETAIL A				
	095	B20	REMOVED NOTE BACK ANGLE OPTIONAL FROM 5°				
	095	B20	CORRECTED CHRYSLER GROUP LLC NOMENCLATURE				
	095	B19	MOVED NOTE TO SECTION B-B				
	095	B18	UPDATED NOTES				
	095	B17	ADDED 0.25° MAX DRAFT ANGLE ALL AROUND				
	095	B16	ADDED [5.50]				
	095	B15	ADDED AT TANGENT NOTE				
	095	B14	REMOVED DATUM D				
	095	B13	ADDED BASIC DIMENSIONS FOR PROFILE CONTROL				
	095	B12	ADDED [0.20 ± 0.05]				
	095	B11	DIMENSIONED TO DATUM A				
	095	B10	SEALING SURFACE DIMENSIONS MOVED TO SECTION C-C				
	095	B9	ADDED SECTION C-C				
	095	B8	REMOVED 15.20 AND 2.50 FROM SECTION A-A				
	095	B7	ADDED DRAFT ANGLE DIRECTION				
	095	B6	REMOVED 0.80 ± 0.07 ± 0.20 ALL AROUND				
	095	B5	REPLACED WALL THICKNESS CONTROL WITH PROFILE OF A SURFACE				
	095	B4	ADDED R(4.7)				
	095	B3	ADDED 0.70 ± 0.15 ALL AROUND				
	095	B2	UPDATED CONNECTOR COLORS				
	095	B1	SURFACE 9' RELOCATED TO [3.50] WAS AT 8.20	03-22-12	KC HV		
		A	RELEASED	10-31-02	DG JC		
LET	REVISION RECORD		DATE	DWN	CHK		
TOLERANCES UNLESS OTHERWISE SPECIFIED							
DIMENSIONS ARE IN MILLIMETERS							
ANGLES	± 3°						
XX	± 0.2	XX	± 0.10				
EWCAP							
REV	4 - 1	DRAWN BY	K.CUNNINGHAM	CHECKED BY	M.VANSLAMBROUCK	DATE	03-22-12
DIRECT CONNECT INTERFACE							
16 WAY (2 X 8) 1.5MM SEALED MALE							
DRAWN NUMBER	150-S-016-2-Z01		REV	E	DO NOT SCALE DRAWING	REVISION LEVEL	B

TABLE OF CONTENTS	
SHEET NO.	SHEET DESCRIPTION
1	NOTES
2	KEY CONFIGURATIONS
3	RECEPTACLE SEALED ASSEMBLY
4-6	BOM



NOTES: VALID UNLESS OTHERWISE SPECIFIED

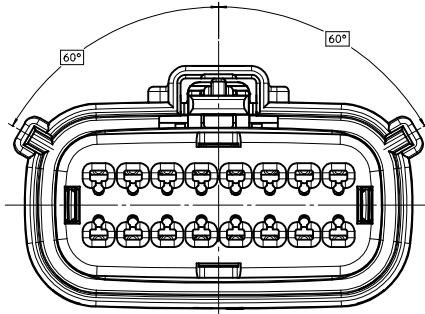
- 1. GENERAL:**
- a. APPLICATION SPECIFICATION SEE: AS-33472-100
 - CONTAINS: PRODUCT INTRODUCTION, PRODUCT SUMMARY, CONNECTOR ASSEMBLY, PACKAGING INFORMATION, CONNECTOR MATING, SERVICE INSTRUCTIONS, ELECTRICAL CONTINUITY CHECKING, CRIMPING, AND TROUBLESHOOTING.
 - DESIGNED TO MATE WITH DEVICE CONNECTION AS SPECIFIED IN DRAWING ENCAP 150-S-016-2-201, AVAILABLE AT <http://www.cpc-us.com/>
 - DESIGNED TO MATE WITH BLADE SEALED ASSEMBLY AS SPECIFIED IN DRAWING SD-33482-161
 - FOR 15mm RECEPTACLE TERMINALS TO BE USED WITH THIS ASSEMBLY SEE MOLEX DRAWING SD-33012-002.
 - SYSTEM TO BE USED WITH WIRE WITHIN DIAMETER RANGE OF 1.2 mm TO 2.69 mm.
 - ASSEMBLY SHIPPED WITH PLR AND CPA IN PRE-LOCK POSITION (SEE SECTION Z-Z PRE-LOCK).
 - IN THE EVENT THAT THE PLR IS FOUND IN THE SEATED (FINAL LOCK) POSITION, REFER TO MOLEX SPECIFICATION PS-34646-001, AVAILABLE AT www.molex.com
 - ASSEMBLY CONFORMS TO SAE/USCAR-2 REV.4 WITH THE FOLLOWING EXCEPTIONS:
 - ENGAGEMENT FORCE TO MOVE CPA FROM PRE-LOCK TO FINAL LOCK POSITION WHEN UNMATED: 40N MIN.
 - DISENGAGEMENT FORCE TO MOVE CPA FROM FINAL LOCK TO PRE-LOCK POSITION: 3N MIN, 40N MAX.
 - TERMINAL INSERTION FORCE FOR WIRE DIAMETER ABOVE 2.5mm NOT EXCEEDING 2.69mm SHALL NOT EXCEED 40 NEWTONS.
 - b. PRODUCT SPECIFICATION SEE: PS-33472-000
 - CONTAINS: PRODUCT INTRODUCTION, PRODUCT SUMMARY, RATINGS (CURRENT, TEMPERATURE, SEALING, AND FLAMMABILITY), AND PRODUCT VALIDATION.
 - c. PACKAGING SPECIFICATION PER MOLEX DRAWING: PK-31800-903
 - d. PARTS MUST BE IN COMPLIANCE TO MOLEX CHEMICAL SUBSTANCES FOR PRODUCTS AND PACKAGING SPECIFICATION: ES-40000-5016
 - e. DATA MUST BE SUBMITTED UNDER THE MOLEX PART NUMBER TO IMDS (COMPANY ID#13255)
- 2. DESIGN - MATERIALS:**
- a. CONNECTOR HOUSING, GROMMET CAP, PRIMARY LOCK REINFORCER (PLR): SPS/NYLON BLEND, 20% GLASS FILLED
 - b. MAT SEAL, RING SEAL: INHERENTLY LUBRICATED SILICONE
 - c. CPA: PBT 20% GLASS FILLED
- 3. DESIGN - GEOMETRY:**
- a. THIS IS A 100% CAD GENERATED PART. THE CAD MATHEMATICAL DATA IS THE MASTER FOR THIS PART. FOR DIMENSIONAL OR ANY INFORMATION NOT SHOWN ON THIS DRAWING, ANALYZE THE CAD MODEL.
 - b. GEOMETRIC DIMENSIONS AND TOLERANCES PER ASME Y14.5M - 1994
 - c. EDGES AND UNDIMENSIONED DETAILS PER ISO13715
 - d. CORNERS SHOWN AS SHARP TO BE R 0.2 MAX.
 - e. LETTERING SHALL BE 0.15 MAX RAISED IN 0.25 MAX RECESS PAD. THIS INCLUDES RECYCLING CODE, CAVITY ID, VENDOR IDENTIFICATION, AND CUSTOMER MATERIAL NUMBER.
 - f. VISUAL DEFECTS SHALL MEET COSMETIC STANDARD PS-45499-002 (Class B)
 - g. LASER MARKING: TBD

INSPECTION NUMBER LOG
 LAST NUMBER USED:
 ADDED:
 REMOVED:

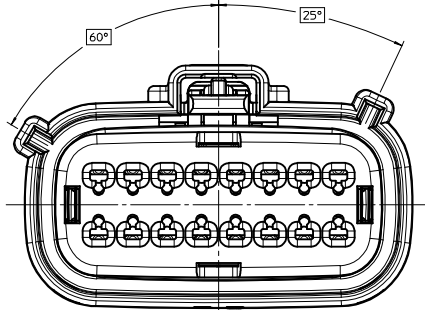
AT3	ADDED PIN OUT 33472-1879
AT2	ADDED PIN OUT 33472-1871 33472-1872
	33472-1873 33472-1874
	33472-1875 33472-1876
	33472-1877 33472-1878
AT1	ADDED PIN OUT 33472-1869 33472-1870
AT	ADDED PIN OUT 33472-1868
AS20	ADDED PIN OUT 33472-1867
AS19	ADDED PIN OUT 33472-1866
AS18	CHANGE PART NUMBER STATUS
	ADDED PIN OUT 33472-1865
AS17	ADDED PIN OUT 33472-1851 33472-1852
	33472-1853 33472-1854
	33472-1855 33472-1856
	33472-1857 33472-1858
	33472-1859 33472-1860
	33472-1861 33472-1862
33472-1863 33472-1864	
REV	DESCRIPTION

ENTER DESCRIPTION EC NO: UAU2014-0488 DRAWN BY: 2013/11/06 CHKD: WKOSHY APPR: WKOSHY 2013/11/19	QUALITY SYMBOLS ▽=0 ▽=0 ▽=0	GENERAL TOLERANCES (UNLESS SPECIFIED)		DIMENSION STYLE MM ONLY		SCALE 3:1	DESIGN UNITS METRIC	THIRD ANGLE PROJECTION
		4 PLACES ± mm ± INCH	DGR1FF1THS 05-29-03	MATERIAL NO. DOCUMENT NO.				
		3 PLACES ± 0.10 ± ---	DGR1FF1THS 05-29-03	MX150 2X8 RECEPTACLE SEALED ASSEMBLY MAT SEAL				
		2 PLACES ± 0.10 ± ---	APPROVED BY DATE	molex				
1 PLACE ± 0.3 ± ---	WKOSHY 2010/10/27	SEE BOM						
0 PLACE ± ±	ANGULAR ± 3 °	THIS DRAWING CONTAINS INFORMATION THAT IS PROPRIETARY TO MOLEX INCORPORATED AND SHOULD NOT BE USED WITHOUT WRITTEN PERMISSION						
DRAFT WHERE APPLICABLE MUST REMAIN WITHIN DIMENSIONS		SIZE D		SHEET NO. 1 OF 7				

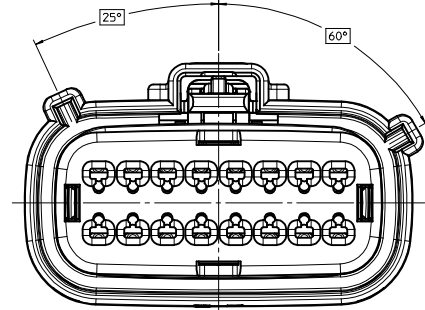
KEY CONFIGURATIONS



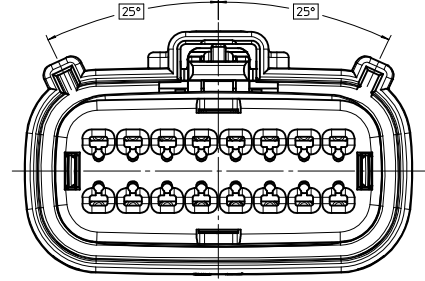
KEY A



KEY B



KEY C



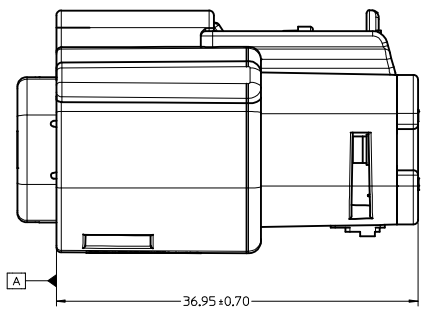
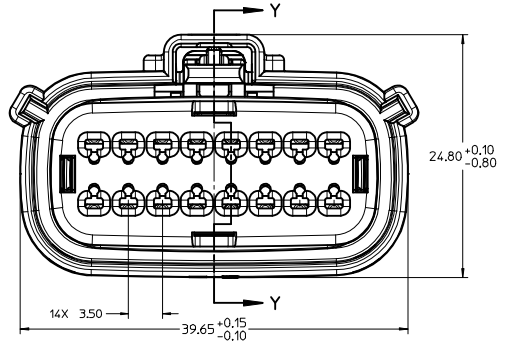
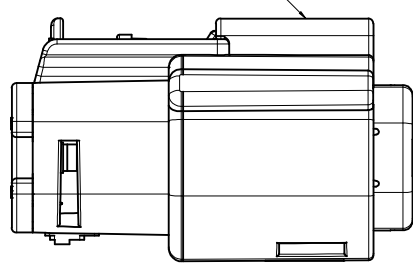
KEY D

ENTER DESCRIPTION EC NO: UAU2014-0488 DRAWN BY CHKD: APPR: VKOSHY 2013/11/06 2013/11/19 DESCRIPTION	QUALITY SYMBOLS	GENERAL TOLERANCES (UNLESS SPECIFIED)	DIMENSION STYLE	SCALE	DESIGN UNITS	THIRD ANGLE PROJECTION	
	▽=0	mm INCH	MM ONLY	4:1	METRIC	☉	
	▽=0	4 PLACES ± --- ± ---	DRAWN BY DATE				
	▽=0	3 PLACES ± --- ± ---	DGRIFITHS 05-29-03	CHECKED BY DATE			
		ANGULAR ± 3 °					
		DRAFT WHERE APPLICABLE MUST REMAIN WITHIN DIMENSIONS					
			MATERIAL NO.		DOCUMENT NO.	SHEET NO.	
			SEE BOM		SD-33472-161	2 OF 7	
			THIS DRAWING CONTAINS INFORMATION THAT IS PROPRIETARY TO MOLEX INCORPORATED AND SHOULD NOT BE USED WITHOUT WRITTEN PERMISSION				

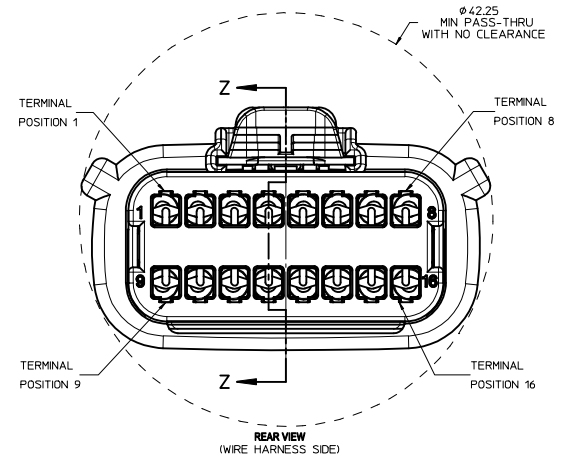
TITLE
 MX150 2X8 RECEPTACLE
 SEALED ASSEMBLY
 MAT SEAL



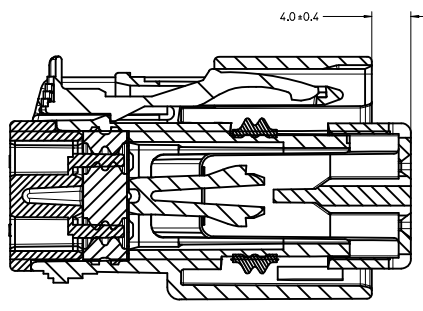
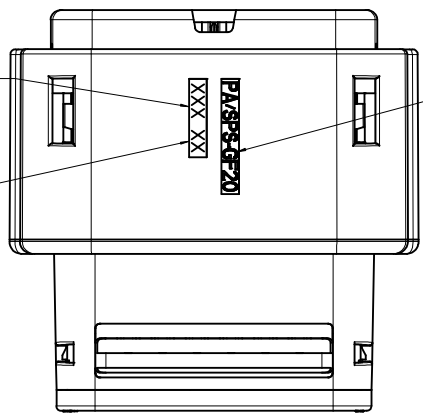
LASER MARKING ON THIS SURFACE
SEE NOTE 3g.



RECEPTACLE SEALED ASSEMBLY

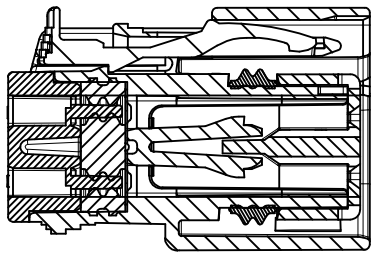


MOLD CAVITY CODE
LOCATION CODE
RECYCLE CODE



PRIMARY LOCK REINFORCEMENT (PLR) SHOWN
IN PRE-STAGED POSITION
SECTION Z-Z

4.0±0.4



PRIMARY LOCK REINFORCEMENT (PLR) SHOWN
IN FINAL-LOCK POSITION
SECTION Y-Y

ENTER DESCRIPTION EEC NO: UAU2014-0488 DRAWN BY: 2013/11/06 CHKD: ATJ APPR: VKOSHY REV DESCRIPTION 2013/11/19	QUALITY SYMBOLS	GENERAL TOLERANCES (UNLESS SPECIFIED)	DIMENSION STYLE	SCALE	DESIGN UNITS	THIRD ANGLE PROJECTION
	▽=0	4 PLACES ±--- ±---	MM ONLY	4:1	METRIC	
	▽=0	3 PLACES ±--- ±---				
	▽=0	2 PLACES ±0.10 ±---				
		1 PLACE ±0.3 ±---				
		0 PLACE ± ±---				
		ANGULAR ± 3 °				
		DRAFT WHERE APPLICABLE MUST REMAIN WITHIN DIMENSIONS				
			MATERIAL NO.	DATE	DATE	TITLE
			SEE BOM	05-29-03	05-29-03	MX150 2X8 RECEPTACLE SEALED ASSEMBLY MAT SEAL
						molex
						DOCUMENT NO. SD-33472-161
						SHEET NO. 3 OF 7
						THIS DRAWING CONTAINS INFORMATION THAT IS PROPRIETARY TO MOLEX INCORPORATED AND SHOULD NOT BE USED WITHOUT WRITTEN PERMISSION

ASSEMBLY PART NUMBER	COLOR	KEYING OPTION	CPA	CAVITY TYPE & STATUS (X = PLUGGED)																STATUS	
				1	2	3	4	5	6	7	8	9	10	11	12	13	14	15	16		
33472-1601	BLACK	A	-																		SALEABLE
33472-1602	LT. GRAY	B	-																		SALEABLE
33472-1603	BROWN	C	-																		NOT RECOMMENDED-SEE PN 33472-1707
33472-1604	GREEN	D	-																		NOT RECOMMENDED-SEE PN 33472-1708
33472-1605																					VOIDED
33472-1606	BLACK	A	YES																		SALEABLE
33472-1607	LT. GRAY	B	YES																		SALEABLE
33472-1608	BROWN	C	YES																		NOT RECOMMENDED-SEE PN 33472-1708
33472-1609	GREEN	D	YES																		NOT RECOMMENDED-SEE PN 33472-1770
33472-1610																					VOIDED
33472-1611	BLACK	A	-								X										SALEABLE
33472-1612	LT. GRAY	B	-								X										SALEABLE
33472-1613	BROWN	C	-								X										NOT RECOMMENDED
33472-1614	GREEN	D	-								X										NOT RECOMMENDED
33472-1615																					VOIDED
33472-1616	BLACK	A	YES								X										SALEABLE
33472-1617	LT. GRAY	B	YES								X										SALEABLE
33472-1618	BROWN	C	YES								X										NOT RECOMMENDED
33472-1619	GREEN	D	YES								X										NOT RECOMMENDED
33472-1620																					VOIDED
33472-1621	BLACK	A	-		X	X	X	X	X	X	X	X	X	X	X	X	X	X	X	X	SALEABLE
33472-1622	LT. GRAY	B	-		X	X	X	X	X	X	X	X	X	X	X	X	X	X	X	X	SALEABLE
33472-1623	BROWN	C	-		X	X	X	X	X	X	X	X	X	X	X	X	X	X	X	X	NOT RECOMMENDED
33472-1624	GREEN	D	-		X	X	X	X	X	X	X	X	X	X	X	X	X	X	X	X	NOT RECOMMENDED
33472-1625																					VOIDED
33472-1626	BLACK	A	YES		X	X	X	X	X	X	X	X	X	X	X	X	X	X	X	X	SALEABLE
33472-1627	LT. GRAY	B	YES		X	X	X	X	X	X	X	X	X	X	X	X	X	X	X	X	SALEABLE
33472-1628	BROWN	C	YES		X	X	X	X	X	X	X	X	X	X	X	X	X	X	X	X	NOT RECOMMENDED
33472-1629	GREEN	D	YES		X	X	X	X	X	X	X	X	X	X	X	X	X	X	X	X	NOT RECOMMENDED
33472-1630																					VOIDED
33472-1631	BLACK	A	-								X	X									SALEABLE
33472-1632	LT. GRAY	B	-								X	X									SALEABLE
33472-1633	BROWN	C	-								X	X									NOT RECOMMENDED
33472-1634	GREEN	D	-								X	X									NOT RECOMMENDED
33472-1635																					VOIDED
33472-1636	BLACK	A	YES								X	X									SALEABLE
33472-1637	LT. GRAY	B	YES								X	X									SALEABLE
33472-1638	BROWN	C	YES								X	X									NOT RECOMMENDED
33472-1639	GREEN	D	YES								X	X									NOT RECOMMENDED
33472-1640																					VOIDED
33472-1641	BLACK	A	-		X						X	X									SALEABLE
33472-1642	LT. GRAY	B	-		X						X	X									SALEABLE
33472-1643	BROWN	C	-		X						X	X									NOT RECOMMENDED
33472-1644	GREEN	D	-		X						X	X									NOT RECOMMENDED
33472-1645																					VOIDED
33472-1646	BLACK	A	YES		X						X	X									SALEABLE
33472-1647	LT. GRAY	B	YES		X						X	X									SALEABLE
33472-1648	BROWN	C	YES		X						X	X									NOT RECOMMENDED
33472-1649	GREEN	D	YES		X						X	X									NOT RECOMMENDED
33472-1650																					VOIDED
33472-1651	BLACK	A	-																		SALEABLE
33472-1652	BLACK	A	YES														X				SALEABLE
33472-1653	BLACK	A	-		X						X	X									SALEABLE
33472-1654	LT. GRAY	B	-		X						X	X									SALEABLE
33472-1655	BROWN	C	-		X						X	X									NOT RECOMMENDED
33472-1656	GREEN	D	-		X						X	X									NOT RECOMMENDED
33472-1657																					VOIDED
33472-1658	BLACK	A	YES		X						X	X									SALEABLE
33472-1659	LT. GRAY	B	YES		X						X	X									SALEABLE
33472-1660	BROWN	C	YES		X						X	X									NOT RECOMMENDED
33472-1661	GREEN	D	YES		X						X	X									NOT RECOMMENDED
33472-1662																					VOIDED
33472-1663	BLACK	A	-		X						X	X									SALEABLE
33472-1664	BLACK	A	-			X	X	X			X	X	X	X	X	X	X	X	X	X	SALEABLE
33472-1665	BLACK	A	-			X	X	X			X	X	X	X	X	X	X	X	X	X	SALEABLE
33472-1666	BLACK	A	-			X	X	X			X	X	X	X	X	X	X	X	X	X	SALEABLE
33472-1667	BLACK	A	-			X	X	X			X	X	X	X	X	X	X	X	X	X	SALEABLE
33472-1668	BLACK	A	-		X						X	X									SALEABLE
33472-1669	LT. GRAY	B	-								X	X									SALEABLE

ENTER DESCRIPTION REC NO: UAU2014-0488 DRAWN BY: CHYKJ APPR: VKOSHY DATE: 2013/11/06 REV: 1	QUALITY SYMBOLS ▽=0 ▽=0 ▽=0	GENERAL TOLERANCES (UNLESS SPECIFIED) mm INCH 4 PLACES #--- #--- 3 PLACES #0.10 #--- 2 PLACES #0.3 #--- 1 PLACE # #--- 0 PLACE # #---	DIMENSION STYLE MM ONLY	SCALE: DESIGN UNITS: METRIC <input checked="" type="checkbox"/> THIRD ANGLE PROJECTION	DRAWN BY: DATE: TITLE:	
					CHECKED BY: DATE: DGR IFF I THS 05-29-03 APPROVED BY: DATE: DGR IFF I THS 05-29-03 VKOSHY 2010/10/27	
DRAFT WHERE APPLICABLE MUST REMAIN WITHIN DIMENSIONS			MATERIAL NO: DOCUMENT NO:	SHEET NO: 4 OF 7		
SEE BOM			SD-33472-161		molex	
THIS DRAWING CONTAINS INFORMATION THAT IS PROPRIETARY TO MOLEX INCORPORATED AND SHOULD NOT BE USED WITHOUT WRITTEN PERMISSION						

