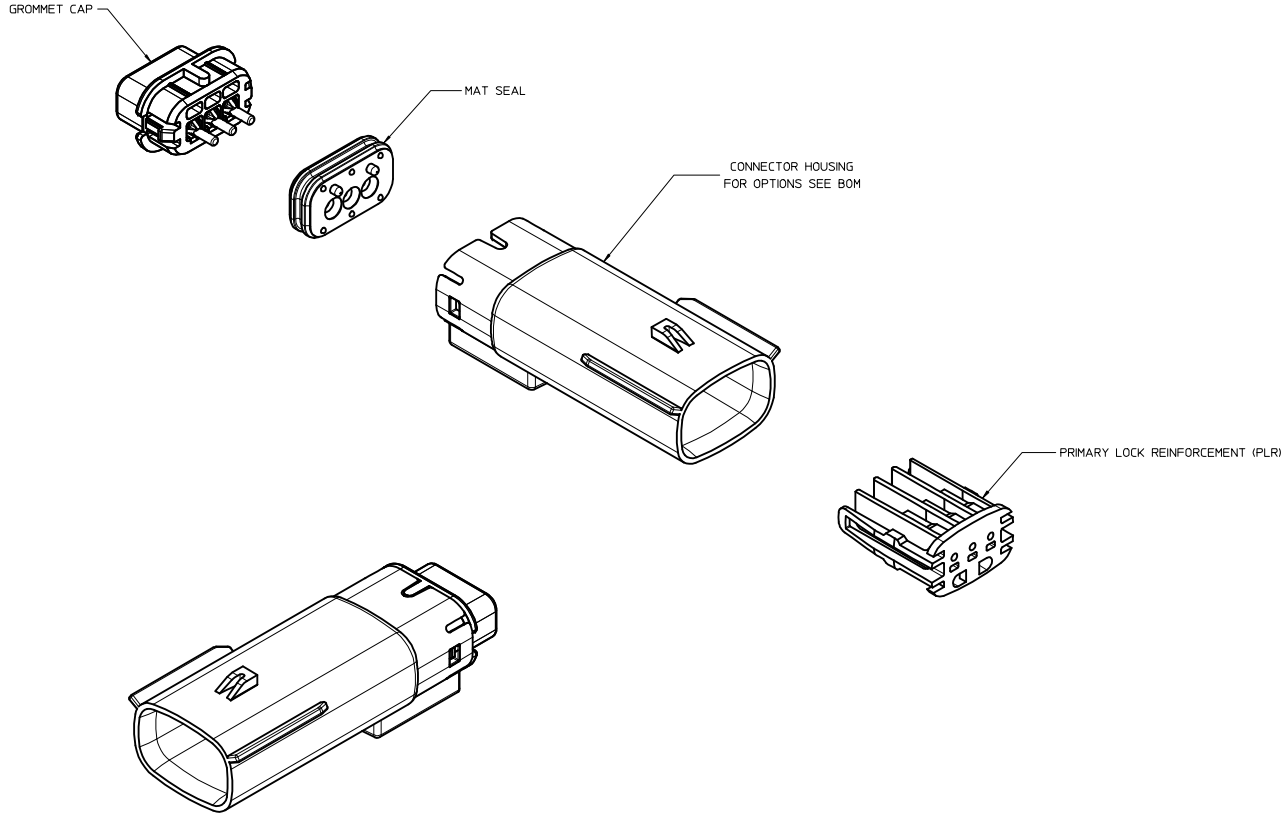


TABLE OF CONTENTS	
SHEET NO.	SHEET DESCRIPTION
1	NOTES
2	KEY CONFIGURATIONS
3	BLADE SEALED ASSEMBLY
4	SYSTEM PACKAGING
5	BOM



NOTES: VALID UNLESS OTHERWISE SPECIFIED

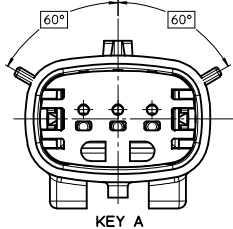
1. GENERAL:
  - a. APPLICATION SPECIFICATION SEE: AS-33472-100  
CONTAINS: PRODUCT INTRODUCTION, PRODUCT SUMMARY, CONNECTOR ASSEMBLY, PACKAGING INFORMATION, CONNECTOR MATING, SERVICE INSTRUCTIONS, ELECTRICAL CONTINUITY CHECKING, CRIMPING, AND TROUBLESHOOTING.  
-DESIGNED TO MATE WITH RECEPTACLE SEALED ASSEMBLY SPECIFIED IN MOLEX DRAWING SD-33471-031.  
-FOR 1.5mm BLADE TERMINALS TO BE USED WITH THIS ASSEMBLY SEE MOLEX DRAWING SD-33000-001.  
- SYSTEM TO BE USED WITH WIRE WITHIN DIAMETER RANGE OF 1.2mm TO 2.69mm.  
-ASSEMBLY SHIPPED WITH PLR IN PRE-LOCK POSITION  
-IN THE EVENT THAT THE PLR IS FOUND IN THE SEATED (FINAL LOCK) POSITION, REFER TO MOLEX SPECIFICATION PS-34646-001, AVAILABLE AT [www.molex.com](http://www.molex.com) <<http://www.molex.com>>  
-ASSEMBLY CONFORMS TO SAE/USCAR-2 REV.4 WITH THE FOLLOWING EXCEPTIONS:  
TERMINAL INSERTION FORCE FOR WIRE DIAMETER ABOVE 2.5mm NOT EXCEEDING 2.69mm SHALL NOT EXCEED 45 NEWTONS.
  - b. PRODUCT SPECIFICATION SEE: PS-33471-000  
CONTAINS: PRODUCT INTRODUCTION, PRODUCT SUMMARY, RATINGS (CURRENT, TEMPERATURE, SEALING, AND FLAMMABILITY), AND PRODUCT VALIDATION.
  - c. PACKAGING SPECIFICATION PER MOLEX DRAWING: PK-31300-635
  - d. PARTS MUST BE IN COMPLIANCE TO MOLEX CHEMICAL SUBSTANCES FOR PRODUCTS AND PACKAGING SPECIFICATIONS ES-40000-5016
  - e. DATA MUST BE SUBMITTED UNDER THE MOLEX PART NUMBER TO IMDS (COMPANY ID#13255)
2. DESIGN - MATERIALS:
  - a. CONNECTOR HOUSING, GROMMET CAP, PLR: SPS/NYLON BLEND 20% GLASS FILLED
  - b. MAT SEAL: INHERENTLY LUBRICATED SILICONE
3. DESIGN - GEOMETRY:
  - a. THIS IS A 100% CAD GENERATED PART. THE CAD MATHEMATICAL DATA IS THE MASTER FOR THIS PART. FOR DIMENSIONAL OR ANY INFORMATION NOT SHOWN ON THIS DRAWING, ANALYZE THE CAD MODEL.
  - b. GEOMETRIC DIMENSIONS AND TOLERANCES PER ASME Y14.5M - 1994
  - c. EDGES AND UNDIMENSIONED DETAILS PER ISO13715
  - d. CORNERS SHOWN AS SHARP TO BE R 0.2 MAX.
  - e. LETTERING SHALL BE 0.15 MAX RAISED IN 0.25 MAX RECESS PAD. THIS INCLUDES RECYCLING CODE, CAVITY ID, VENDOR IDENTIFICATION, AND CUSTOMER MATERIAL NUMBER.
  - f. VISUAL DEFECTS SHALL MEET COSMETIC STANDARD PS-45499-002 (Class B)
  - g. LASER MARKING: TBD

INSPECTION NUMBER LOG  
LAST NUMBER USED: 8  
ADDED:  
REMOVED:

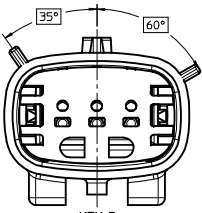
N	UPDATED GROMMET CAP	
M3	UPDATED DIMENSIONS TO MATCH MODEL	
M2	COLOR REPLACEMENT FOR KEY C AND D PER USCAR STANDARD	
M1	UPDATED NOTES	
M	REDRAWN	
REV	DESCRIPTION	
	MM ONLY	THIRD ANGLE PROJECTION
	SCALE 3:1	DESIGN UNITS METRIC
	DRAWN BY DMARCOUX	DATE 06-12-02
	CHECKED BY DGRIFFIT	DATE 06-12-02
	APPROVED BY FHOLUB	DATE 06-12-02
	MATERIAL NO. SEE BOM	DOCUMENT NO. SD-33481-031
		SHEET NO. 1 OF 5

QUALITY SYMBOLS	GENERAL TOLERANCES (UNLESS SPECIFIED)		DIMENSION STYLE	
	mm	INCH	MM ONLY	SCALE 3:1
▽=0	4 PLACES ±---	±---	DRAWN BY DMARCOUX	DATE 06-12-02
▽=0	3 PLACES ±---	±---	CHECKED BY DGRIFFIT	DATE 06-12-02
▽=0	2 PLACES ±0.10	±---	APPROVED BY FHOLUB	DATE 06-12-02
▽=0	1 PLACE ±0.3	±---		
▽=0	0 PLACE ±	±		
	ANGULAR ± 3 °			
	DRAFT WHERE APPLICABLE MUST REMAIN WITHIN DIMENSIONS			

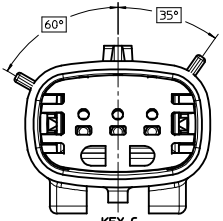
KEY CONFIGURATIONS



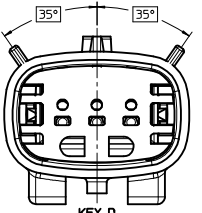
KEY A



KEY B



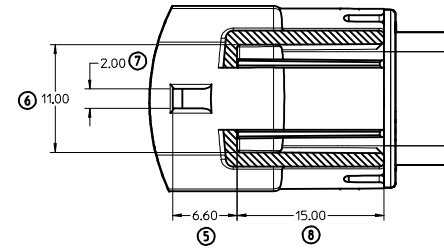
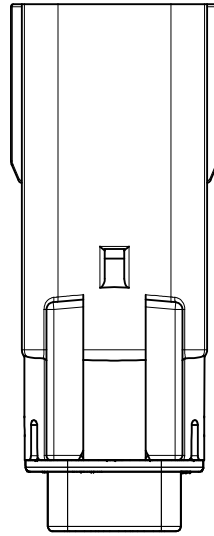
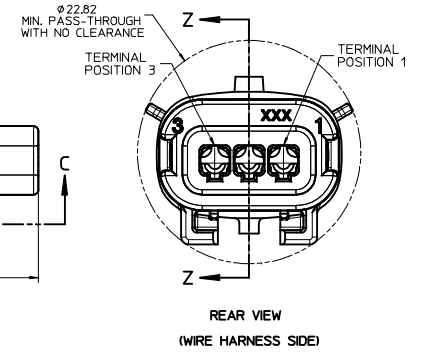
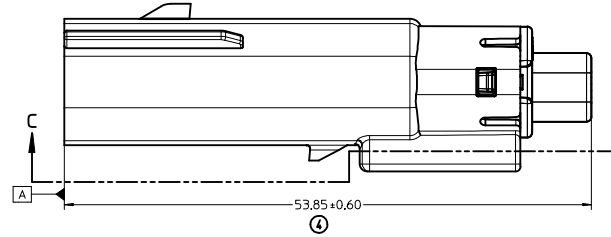
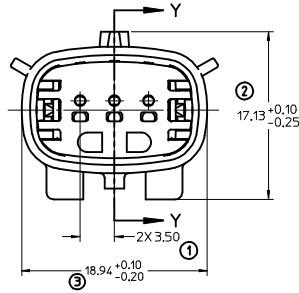
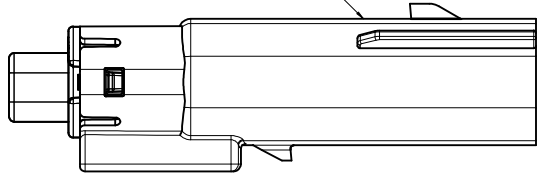
KEY C



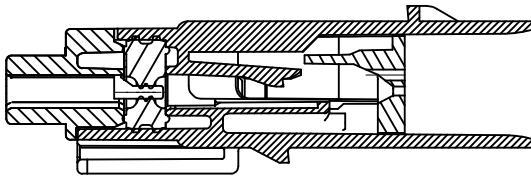
KEY D

SEE REV. COLUMN IEC NO. UAU2013-1478 DRAWN: PROFFITT 2013/03/20 CHECKED: DICK 2013/03/20 APPR: KOSHY 2013/03/20	QUALITY SYMBOLS ∇=0 ∇=0 ∇=0	GENERAL TOLERANCES (UNLESS SPECIFIED)		DIMENSION STYLE <b>MM ONLY</b>	SCALE <b>4:1</b>	DESIGN UNITS <b>METRIC</b>	THIRD ANGLE PROJECTION
		4 PLACES ± mm ± INCH 3 PLACES ± --- ± --- 2 PLACES ± 0.10 ± --- 1 PLACE ± 0.3 ± --- 0 PLACE ± ±	DRAWN BY DMARCOUX 06-12-02 CHECKED BY DGRIFFIT 06-12-02 APPROVED BY FHOLUB 06-12-02	TITLE <b>MX150 1X3 BLADE SEALED ASSEMBLY MAT SEAL</b>		MATERIAL NO. <b>SEE BOM</b>	DOCUMENT NO. <b>SD-33481-031</b>
DRAFT WHERE APPLICABLE MUST REMAIN WITHIN DIMENSIONS		ANGULAR ± 3 °		THIS DRAWING CONTAINS INFORMATION THAT IS PROPRIETARY TO MOLEX INCORPORATED AND SHOULD NOT BE USED WITHOUT WRITTEN PERMISSION			

LASER MARKING THIS SURFACE  
SEE NOTE 3g.

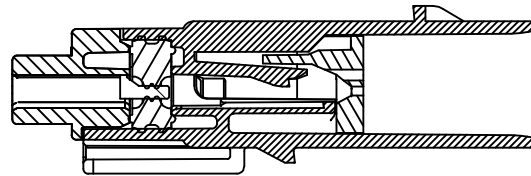


SECTION C-C



PRIMARY LOCK REINFORCEMENT (PLR) SHOWN  
IN PRE-STAGED POSITION

SECTION Z-Z



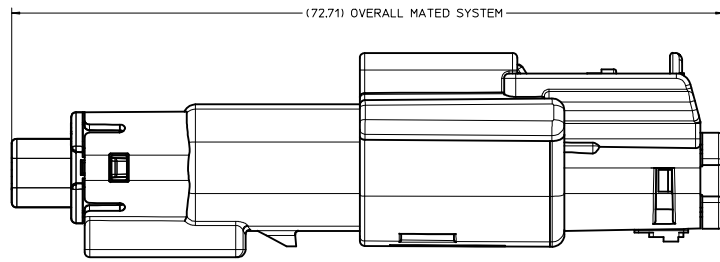
PRIMARY LOCK REINFORCEMENT (PLR) SHOWN  
IN FINAL-LOCK POSITION

SECTION Y-Y

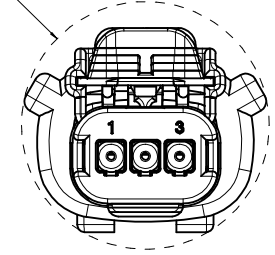
SEE REV. COLUMN IEC NO. UAU2013-1478 DRAWN: PROFFITT CHYKHOLOK APPR: VIOSHY	2013/03/19 2013/03/20	QUALITY SYMBOLS ∇=0 ∇=0 ∇=0	GENERAL TOLERANCES (UNLESS SPECIFIED) mm INCH 4 PLACES ± --- ± --- 3 PLACES ± 0.10 ± --- 2 PLACES ± 0.3 ± --- 1 PLACE ± ± --- 0 PLACE ± ±	DIMENSION STYLE MM ONLY	SCALE 4:1	DESIGN UNITS METRIC	THIRD ANGLE PROJECTION	
	DRAWN BY DMARCOUX	DATE 06-12-02	CHECKED BY DGRIFFIT	DATE 06-12-02	APPROVED BY FHOLUB	DATE 06-12-02	MATERIAL NO. SEE BOM	DOCUMENT NO. SD-33481-031
	ANGULAR ± 3 ° DRAFT WHERE APPLICABLE MUST REMAIN WITHIN DIMENSIONS	SIZE D	THIS DRAWING CONTAINS INFORMATION THAT IS PROPRIETARY TO MOLEX INCORPORATED AND SHOULD NOT BE USED WITHOUT WRITTEN PERMISSION					
	MX150 1X3 BLADE SEALED ASSEMBLY MAT SEAL <b>molex</b>							SHEET NO. 3 OF 5

20 19 18 17 16 15 14 13 12 11 10 9 8 7 6 5 4 3 2 1

SYSTEM PACKAGING



∅25.30  
MIN. PASS-THROUGH  
WITH NO CLEARANCE




SEE REV. COLUMN IEC NO. UAU2013-1478 DRAWN/PROFFITT 2013/03/19 CHYKHODICK 2013/03/20 APPR:VKOSHY 2013/03/20	QUALITY SYMBOLS ∇=0 ∇=0 ∇=0	GENERAL TOLERANCES (UNLESS SPECIFIED)		DIMENSION STYLE <b>MM ONLY</b>	SCALE <b>4:1</b>	DESIGN UNITS <b>METRIC</b>	THIRD ANGLE PROJECTION		
		4 PLACES ± mm ± INCH	3 PLACES ± mm ± INCH	2 PLACES ± 0.10 ± mm ± INCH	1 PLACE ± 0.3 ± mm ± INCH	0 PLACE ± mm ± INCH	DRAWN BY DMARCOUX	DATE 06-12-02	MX150 1X3 BLADE SEALED ASSEMBLY MAT SEAL <b>molex</b>
		ANGULAR ± 3 °					CHECKED BY DGRIFFIT	DATE 06-12-02	
		DRAFT WHERE APPLICABLE MUST REMAIN WITHIN DIMENSIONS					APPROVED BY FHOLUB	DATE 06-12-02	
MATERIAL NO. <b>SEE BOM</b>				DOCUMENT NO. <b>SD-33481-031</b>		SHEET NO. 4 OF 5			

19 18 17 16 15 14 13 12 11 10 9 8 7 6 5 4 3 2 1

ASSEMBLY PART NUMBER	COLOR	KEYING OPTION	CAVITY TYPE & STATUS (X = PLUGGED)			COMMENTS
			1	2	3	
33481-0301	BLACK	A				
33481-0302	LT. GRAY	B				
33481-0303	BROWN	C				NOT RECOMMENDED, SEE P/N 33481-0322
33481-0304	GREEN	D				NOT RECOMMENDED, SEE P/N 33481-0323
33481-0305	CUSTOM	TBD				
33481-0306	BLACK	A			X	
33481-0307	LT. GRAY	B			X	
33481-0308	BROWN	C			X	
33481-0309	GREEN	D			X	
33481-0310	CUSTOM	TBD			X	
33481-0311	BLACK	A	X		X	
33481-0312	LT. GRAY	B	X		X	
33481-0313	BROWN	C	X		X	
33481-0314	GREEN	D	X		X	
33481-0315	CUSTOM	TBD	X		X	
33481-0316	BLACK	A	X	X	X	
33481-0317	LT. GRAY	B	X	X	X	
33481-0318	BROWN	C	X	X	X	NOT RECOMMENDED, SEE P/N 33481-0324
33481-0319	GREEN	D	X	X	X	NOT RECOMMENDED, SEE P/N 33481-0325
33481-0320	CUSTOM	TBD	X	X	X	
33481-0321	BLACK	A		X		
33481-0322	DK. GRAY	C				
33481-0323	ST. GRAY	D				
33481-0324	DK. GRAY	C	X	X	X	
33481-0325	ST. GRAY	D	X	X	X	

 33481-0322  
 33481-0323  
 33481-0324  
 33481-0325

<b>SEE REV. COLUMN</b> IEC NO. UAU2013-1478 DRAWN: APPROFIT 2013/03/20 CHECKED: DICK 2013/03/20 APPR: WOSHY 2013/03/20	QUALITY SYMBOLS	GENERAL TOLERANCES (UNLESS SPECIFIED)	DIMENSION STYLE	SCALE	DESIGN UNITS	THIRD ANGLE PROJECTION
	▽=0	mm INCH	MM ONLY		METRIC	
	▽=0	4 PLACES ± 0.10	DRAWN BY DATE			MX150 1X3 BLADE SEALED ASSEMBLY MAT SEAL 
	▽=0	3 PLACES ± 0.03	CHECKED BY DATE			
	ANGULAR ± 3°	DRAFT WHERE APPLICABLE MUST REMAIN WITHIN DIMENSIONS	MATERIAL NO.		DOCUMENT NO.	SHEET NO.
			SEE BOM		SD-33481-031	5 OF 5
			THIS DRAWING CONTAINS INFORMATION THAT IS PROPRIETARY TO MOLEX INCORPORATED AND SHOULD NOT BE USED WITHOUT WRITTEN PERMISSION			