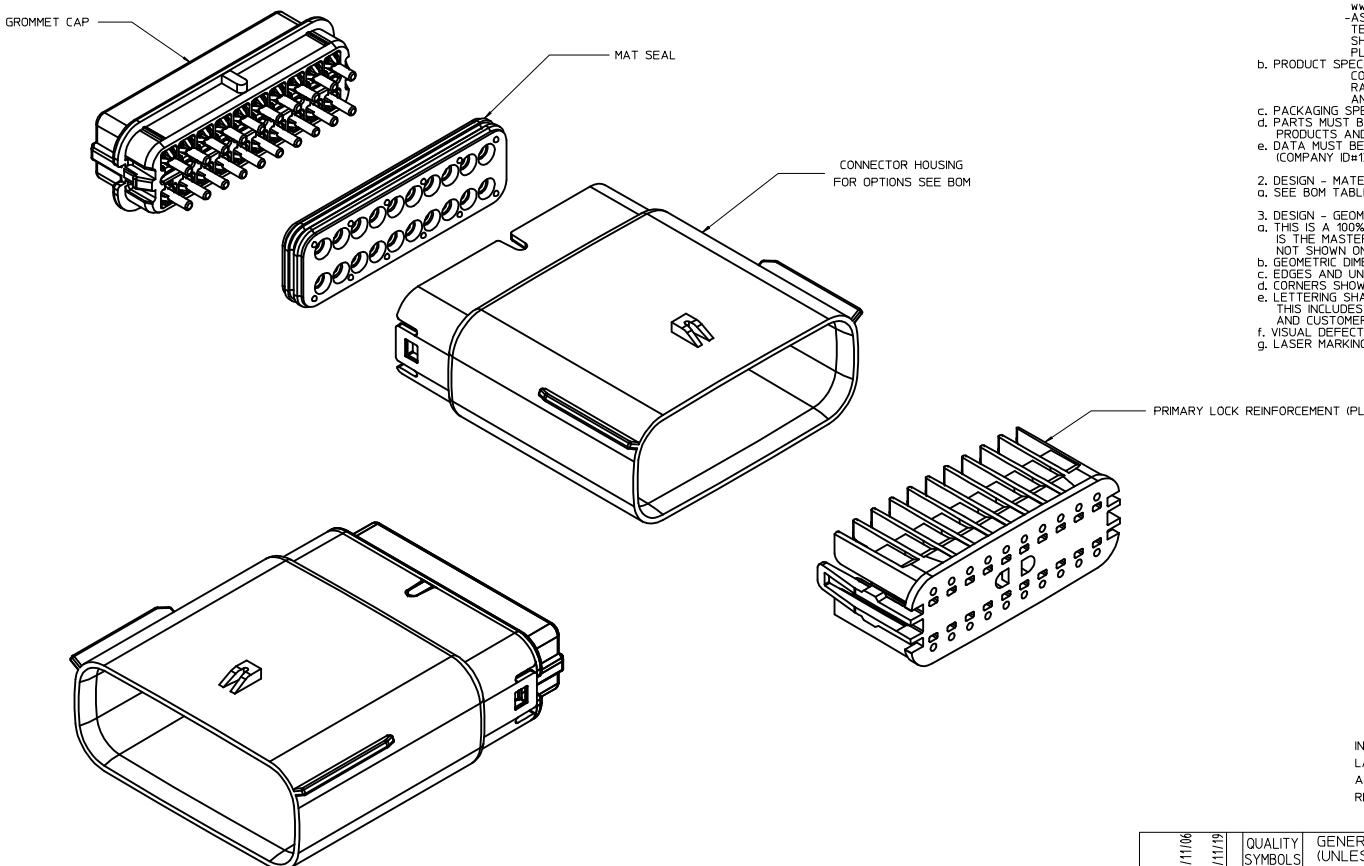


| TABLE OF CONTENTS | |
|-------------------|------------------------|
| SHEET NO. | SHEET DESCRIPTION |
| 1 | NOTES |
| 2 | KEY CONFIGURATIONS |
| 3 | BLADE HOUSING ASSEMBLY |
| 4 | SYSTEM PACKAGING |
| 5 | BOM |



NOTES: VALID UNLESS OTHERWISE SPECIFIED

1. GENERAL:
 - a. APPLICATION SPECIFICATION SEE: AS-33472-100
 CONTAINS: PRODUCT INTRODUCTION, PRODUCT SUMMARY, CONNECTOR ASSEMBLY, PACKAGING INFORMATION, CONNECTOR MATING, SERVICE INSTRUCTIONS, ELECTRICAL CONTINUITY CHECKING, CRIMPING, AND TROUBLESHOOTING.
 -DESIGNED TO MATE WITH RECEPTACLE SEALED ASSEMBLY SPECIFIED IN MOLEX CHARTED DRAWING SD-33472-201.
 -FOR 1.5mm BLADE TERMINALS TO BE USED WITH THIS ASSEMBLY SEE MOLEX DRAWING SD-33000-001
 - SYSTEM TO BE USED WITH WIRE WITHIN DIAMETER RANGE OF 1.4mm TO 2.69mm.
 -ASSEMBLY SHIPPED WITH PLR IN PRE-LOCK POSITION
 -IN THE EVENT THAT THE PLR IS FOUND IN THE SEATED (FINAL LOCK) POSITION, REFER TO MOLEX SPECIFICATION PS-34646-001, AVAILABLE AT www.molex.com <http://www.molex.com>
 -ASSEMBLY CONFORMS TO SAE/USCAR-2 REV.4 WITH THE FOLLOWING EXCEPTIONS: TERMINAL INSERTION FORCE FOR WIRE DIAMETER ABOVE 2.5mm NOT EXCEEDING 2.69N SHALL NOT EXCEED 45 NEWTONS.
 PLR REMOVAL FROM FINAL LOCK TO PRE-LOCK POSITION SHALL NOT EXCEED 75 NEWTONS.
 - b. PRODUCT SPECIFICATION SEE: PS-33472-000
 CONTAINS: PRODUCT INTRODUCTION, PRODUCT SUMMARY, RATINGS (CURRENT, TEMPERATURE, SEALING, AND FLAMMABILITY), AND PRODUCT VALIDATION.
 - c. PACKAGING SPECIFICATION PER MOLEX DRAWING: PK-31300-635
 - d. PARTS MUST BE IN COMPLIANCE TO MOLEX CHEMICAL SUBSTANCES FOR PRODUCTS AND PACKAGING SPECIFICATION: PS-40000-5016
 - e. DATA MUST BE SUBMITTED UNDER THE MOLEX PART NUMBER TO IMDS (COMPANY ID#13255)
2. DESIGN - MATERIALS:
 - a. SEE BOM TABLE
3. DESIGN - GEOMETRY:
 - a. THIS IS A 100% CAD GENERATED PART. THE CAD MATHEMATICAL DATA IS THE MASTER FOR THIS PART. FOR DIMENSIONAL OR ANY INFORMATION NOT SHOWN ON THIS DRAWING, ANALYZE THE CAD MODEL.
 - b. GEOMETRIC DIMENSIONS AND TOLERANCES PER ASME Y14.5M - 1994
 - c. EDGES AND UNDIMENSIONED DETAILS PER ISO13715
 - d. CORNERS SHOWN AS SHARP TO BE R 0.2 MAX.
 - e. LETTERING SHALL BE 0.15 MAX RAISED IN 0.25 MAX RECESS PAD. THIS INCLUDES RECYCLING CODE, CAVITY ID, VENDOR IDENTIFICATION, AND CUSTOMER MATERIAL NUMBER.
 - f. VISUAL DEFECTS SHALL MEET COSMETIC STANDARD PS-45499-002 (Class B)
 - g. LASER MARKING: TBD

INSPECTION NUMBER LOG
 LAST NUMBER USED:
 ADDED:
 REMOVED:

| | |
|-----|--|
| U19 | ADD NEW P/N 33482-2077 |
| U18 | ADD NEW P/N 33482-2076 |
| U17 | ADD NEW P/N 33482-2075 |
| U16 | ADD NEW P/N 33482-2074 |
| U15 | UPDATE DIM. 3 TOLERANCE FROM 22.13+0.25/-0.1 TO 21.87+/-0.18 |
| U14 | ADD NEW P/N 33482-2071 33482-2073 |
| U13 | UPDATED GROMMET CAP |
| U12 | ADD NEW P/N 33482-2070 |
| U11 | ADD NEW P/N 33482-2062 33482-2063 33482-2064 33482-2065 33482-2066 33482-2067 33482-2068 33482-2069 |
| U10 | UPDATED DIMENSIONS TO MATCH MODEL |
| U8 | ADD NEW P/N 33482-2056 33482-2057 33482-2058 33482-2059 |
| U7 | COLOR REPLACEMENT PO KEY C AND KEY D PER USCAR STANDARD |
| U6 | ADD NEW P/N 33482-2053 |
| U5 | ADD NEW P/N 33482-2052 |
| U4 | ADD NEW P/N 33482-2051 |
| U3 | ADD NEW P/N 33482-2050 |
| U2 | ADDED LASER MARKING LOCATION SHEET 3 |
| U1 | ADD NEW P/N 33482-2048 33482-2049 |
| U | REDRAWN |

| | | | | | |
|--|-----------------|--|---------------------|---------|------------------------|
| REVISED DEC NO. UAU2014-0488 DRAWN BY 2013/11/06 CHKD: APPR: VKOSHY 2013/11/19 REV DESCRIPTION | QUALITY SYMBOLS | GENERAL TOLERANCES (UNLESS SPECIFIED) | DRAWN BY DATE | SCALE | THIRD ANGLE PROJECTION |
| | ▽=0 | 4 PLACES ± mm ± INCH | DGRIF ITHS 06-17-03 | MM ONLY | ☉ |
| | ▽=0 | 3 PLACES ± 0.10 ± --- | CHECKED BY DATE | 3:1 | METRIC |
| | ▽=0 | 2 PLACES ± 0.3 ± --- | DGRIF ITHS 06-17-03 | | |
| | | 1 PLACE ± 0.3 ± --- | APPROVED BY DATE | | |
| | | 0 PLACE ± ± | DGRIF ITHS 06-17-03 | | |
| | | ANGULAR ± 3 ° | MATERIAL NO. | | |
| | | DRAFT WHERE APPLICABLE MUST REMAIN WITHIN DIMENSIONS | SEE BOM | | |
| | | | SIZE D | | |

MX150 2X10 BLADE SEALED ASSEMBLY MAT SEAL

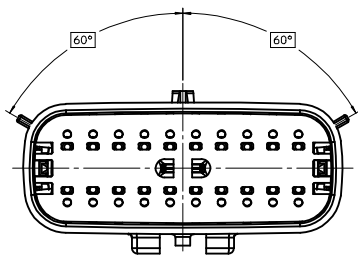
molex

DOCUMENT NO. SD-33482-201 SHEET NO. 1 OF 5

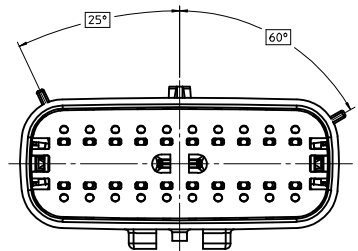
THIS DRAWING CONTAINS INFORMATION THAT IS PROPRIETARY TO MOLEX INCORPORATED AND SHOULD NOT BE USED WITHOUT WRITTEN PERMISSION

20 19 18 17 16 15 14 13 12 11 10 9 8 7 6 5 4 3 2 1

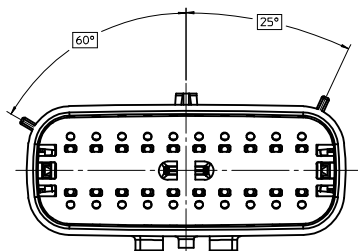
KEY CONFIGURATIONS



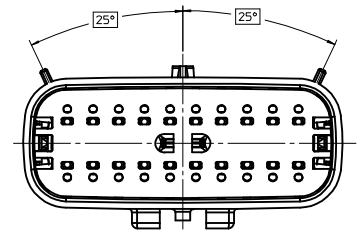
KEY A



KEY B



KEY C



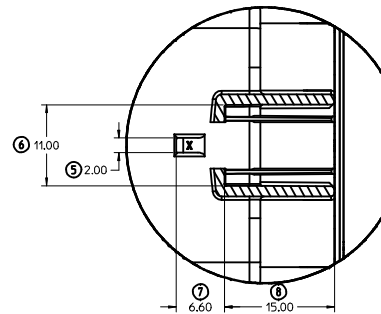
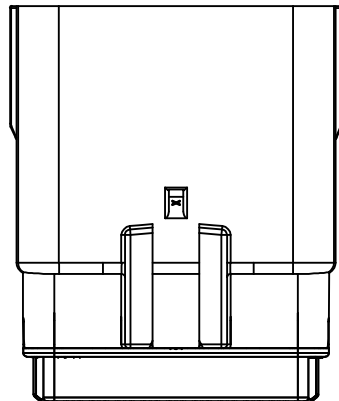
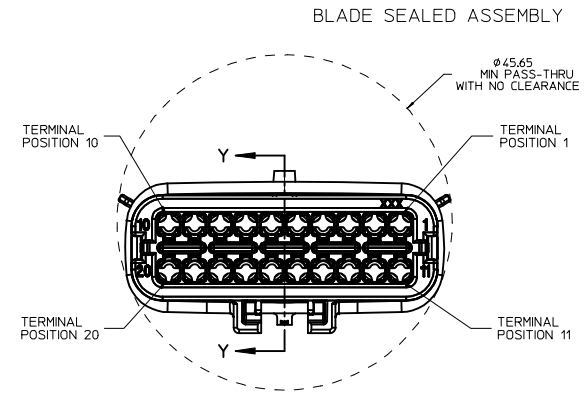
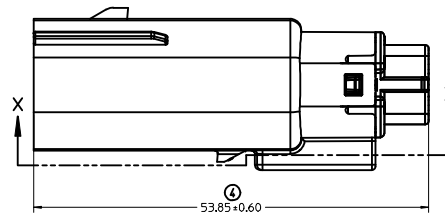
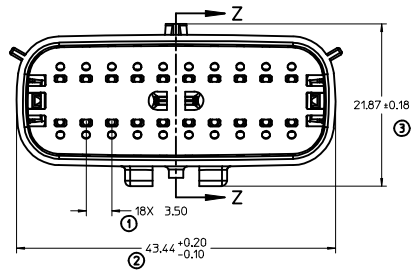
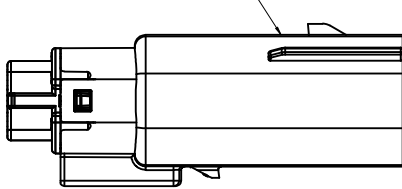
KEY D

| | | | | | | |
|--|--|---------------------------------------|--------------------|---|--------------|------------------------|
| REVISED DEC NO. UAU2014-0488 DRAWN BY U19 CHKD: APPR: WOSHY 2013/11/06 2013/11/19 | QUALITY SYMBOLS | GENERAL TOLERANCES (UNLESS SPECIFIED) | DIMENSION STYLE | SCALE | DESIGN UNITS | THIRD ANGLE PROJECTION |
| | ▽=0 | mm INCH | MM ONLY | 3:1 | METRIC | ☉ |
| | ▽=0 | 4 PLACES ± --- ± --- | DRAWN BY DATE | TITLE | | |
| | ▽=0 | 3 PLACES ± 0.10 ± --- | DGRIFITHS 06-17-03 | MX150 2X10 BLADE SEALED ASSEMBLY MAT SEAL | | |
| ▽=0 | 2 PLACES ± 0.3 ± --- | 1 PLACE ± --- ± --- | CHECKED BY DATE | DGRIFITHS 06-17-03 | | |
| | ANGULAR ± 3 ° | 0 PLACE ± --- ± --- | APPROVED BY DATE | DGRIFITHS 06-17-03 | | |
| | DRAFT WHERE APPLICABLE MUST REMAIN WITHIN DIMENSIONS | | MATERIAL NO. | DOCUMENT NO. | | |
| | | | SEE BOM | SD-33482-201 | | |
| | | | SIZE D | THIS DRAWING CONTAINS INFORMATION THAT IS PROPRIETARY TO MOLEX INCORPORATED AND SHOULD NOT BE USED WITHOUT WRITTEN PERMISSION | | |

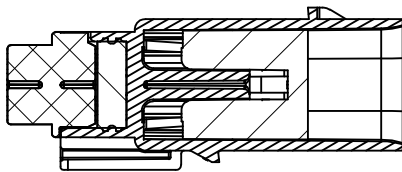
SHEET NO. 2 OF 5

19 18 17 16 15 14 13 12 11 10 9 8 7 6 5 4 3 2 1

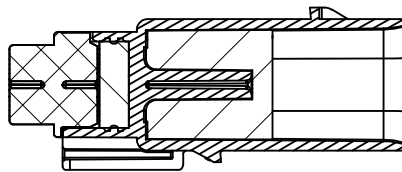
LASER MARKING ON THIS SURFACE
SEE NOTE 3g.



Partial X-X
SCALE 3:1



PRIMARY LOCK REINFORCEMENT (PLR) SHOWN
IN PRE-STAGED POSITION
SECTION Z-Z

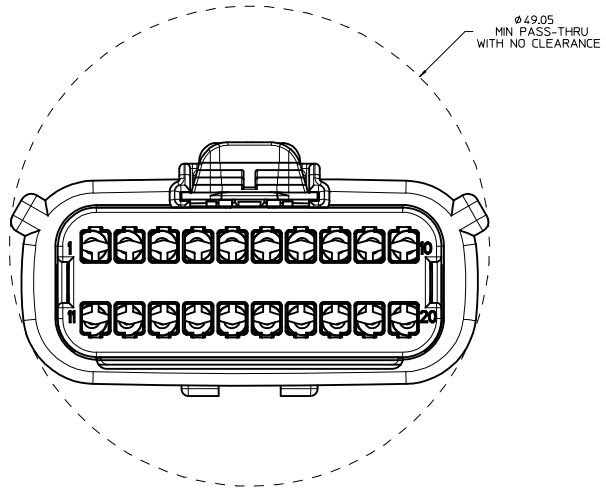
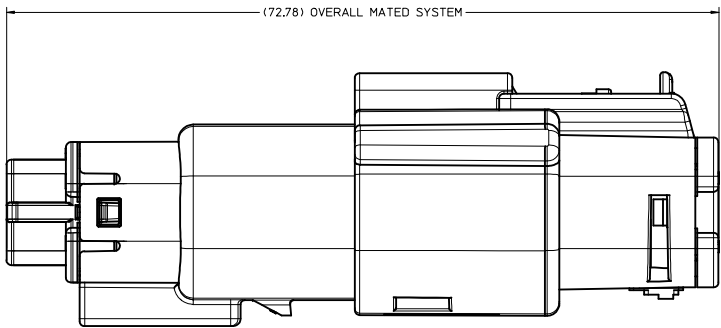


PRIMARY LOCK REINFORCEMENT (PLR) SHOWN
IN FINAL-LOCK POSITION
SECTION Y-Y

| | | | | | | |
|---|---|---|--|--|---|---------------------|
| REVISED ELEC NO: UAU2014-0488 DRAWN BY: 2013/11/06 CHKD: APPR: WOSHU 2013/11/19 U19 | QUALITY SYMBOLS ∇=0 ∇=0 ∇=0 | GENERAL TOLERANCES (UNLESS SPECIFIED) mm INCH 4 PLACES ± --- ± --- 3 PLACES ± 0.10 ± --- 2 PLACES ± 0.3 ± --- 1 PLACE ± ± --- 0 PLACE ± ± | DIMENSION STYLE MM ONLY SCALE 3:1 DESIGN UNITS METRIC THIRD ANGLE PROJECTION | DRAWN BY: DGRIFITHS DATE: 06-17-03 CHECKED BY: DATE DGRIFITHS 06-17-03 APPROVED BY: DATE DGRIFITHS 06-17-03 | TITLE MX150 2X10 BLADE SEALED ASSEMBLY MAT SEAL molex DOCUMENT NO. SD-33482-201 | SHEET NO. 3 OF 5 |
| | DRAFT WHERE APPLICABLE MUST REMAIN WITHIN DIMENSIONS ANGULAR ± 3 ° MATERIAL NO. SEE BOM THIS DRAWING CONTAINS INFORMATION THAT IS PROPRIETARY TO MOLEX INCORPORATED AND SHOULD NOT BE USED WITHOUT WRITTEN PERMISSION | | | | | |

20 19 18 17 16 15 14 13 12 11 10 9 8 7 6 5 4 3 2 1

SYSTEM PACKAGING



| | | | | | | | |
|--|--|---|------------------------------|---------------------|--------------|--|--|
| REVISED DEC NO. UAU2014-0488 DRAWN BY CHYKZ U19 APPR: WOSHY 2013/11/06 2013/11/19 | QUALITY SYMBOLS | GENERAL TOLERANCES (UNLESS SPECIFIED) | DIMENSION STYLE | SCALE | DESIGN UNITS | THIRD ANGLE PROJECTION | |
| | $\nabla=0$ $\nabla=0$ $\nabla=0$ | mm INCH 4 PLACES \pm --- \pm --- 3 PLACES \pm --- \pm --- 2 PLACES \pm 0.10 \pm --- 1 PLACE \pm 0.3 \pm --- 0 PLACE \pm \pm | MM ONLY | 4:1 | METRIC | DRAWN BY DATE DGRIFFI THS 06-17-03 CHECKED BY DATE DGRIFFI THS 06-17-03 APPROVED BY DATE DGRIFFI THS 06-17-03 | TITLE MX150 2X10 BLADE SEALED ASSEMBLY MAT SEAL molex |
| | ANGLULAR \pm 3 ° DRAFT WHERE APPLICABLE MUST REMAIN WITHIN DIMENSIONS | MATERIAL NO. SEE BOM | DOCUMENT NO. SD-33482-201 | SHEET NO. 4 OF 5 | | | |
| | THIS DRAWING CONTAINS INFORMATION THAT IS PROPRIETARY TO MOLEX INCORPORATED AND SHOULD NOT BE USED WITHOUT WRITTEN PERMISSION | | | | | | |

19 18 17 16 15 14 13 12 11 10 9 8 7 6 5 4 3 2 1

