



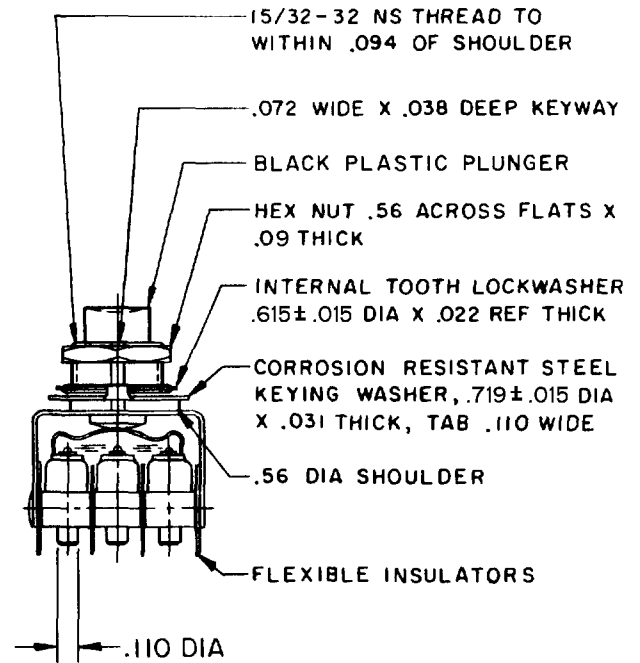
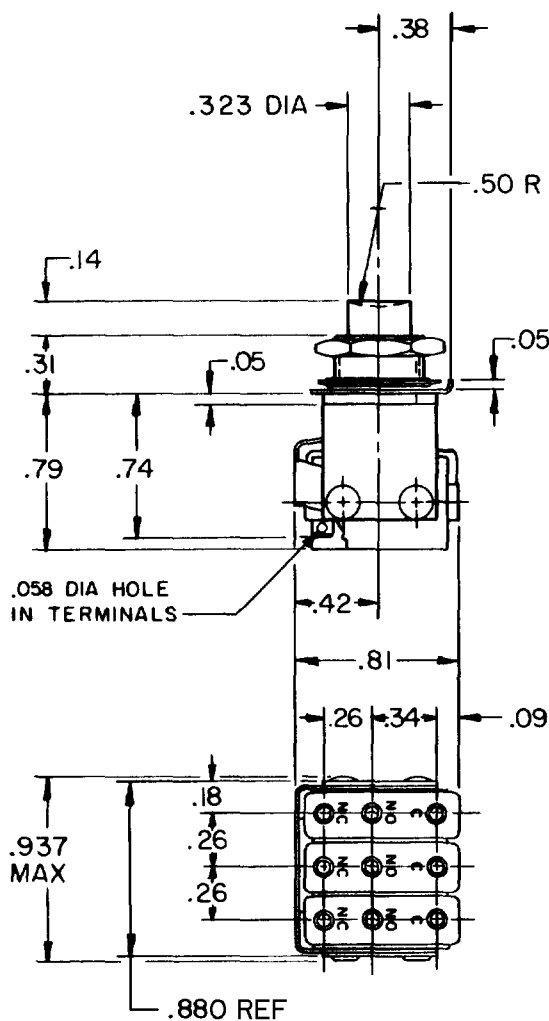
MICRO SWITCH
FREEPORT, ILLINOIS, U.S.A.
A DIVISION OF HONEYWELL

FED. MFG. CODE 91929

ASSEMBLY — PUSHBUTTON SWITCH

CATALOG LISTING

3PB7



NOTES

- 1 - UNIT INCLUDES "ISM" TYPE BASIC SWITCH (3)
- 2 - BASIC SWITCHES OPERATE WITHIN .008 OF EACH OTHER (PUSHBUTTON PLUNGER TRAVEL)
- 3 - TERMINALS ARE PLATED FOR SOLDERING
- 4 - UNIT WILL PERFORM SATISFACTORILY IN TEMPERATURES TO MINUS 20° F

THIS DRAWING COVERS A PROPRIETARY ITEM AND IS THE PROPERTY OF MICRO SWITCH, A DIVISION OF HONEYWELL. THIS DRAWING IS NOT TO BE COPIED OR USED WITHOUT THE APPROVAL OF MICRO SWITCH.

CHARACTERISTICS

OPERATING FORCE --- 2 1/2 LB APPROX

ELECTRICAL DATA

CONTACT ARRANGEMENT
S P D T (3)

250 VAC	5 AMP
30 VOLTS DC RATING	
INDUCTIVE --- SEA LEVEL	3 AMP
50,000 FT	2.5 AMP
RESISTIVE --- SEA LEVEL	5 AMP
50,000 FT	5 AMP
MAXIMUM INRUSH	24 AMP

SCALE FULL

DO NOT SCALE PRINT

UNLESS OTHERWISE
NOTED

DIMENSIONS ARE IN INCHES

TOLERANCES ARE:

ONE PLACE (.0)	±.030
TWO PLACE (.00)	±.015
THREE PLACE (.000)	±.005
ANGLES	±

WEIGHT

3PB7
PAGE 1 OF 1

M

DRAWING
NUMBER

ISSUE
7

REVISIONS

A	C019800	LLD	1 MAR 65
B	C0-93593	PPF	27 OCT 98

REPLACES

RELEASE NO.

CHECK

JAF 27 OCT 98

CHECK

JAF 27 OCT 98

CHECK

JAF 27 OCT 98

CHECK

JAF 27 OCT 98

CHECK

JAF 27 OCT 98

CHECK

JAF 27 OCT 98

DRAWN

FO-50378