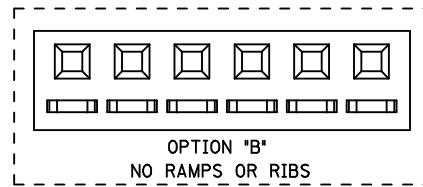
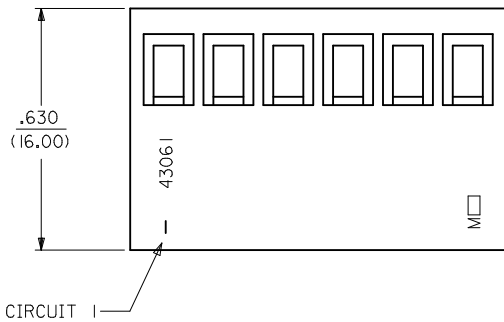
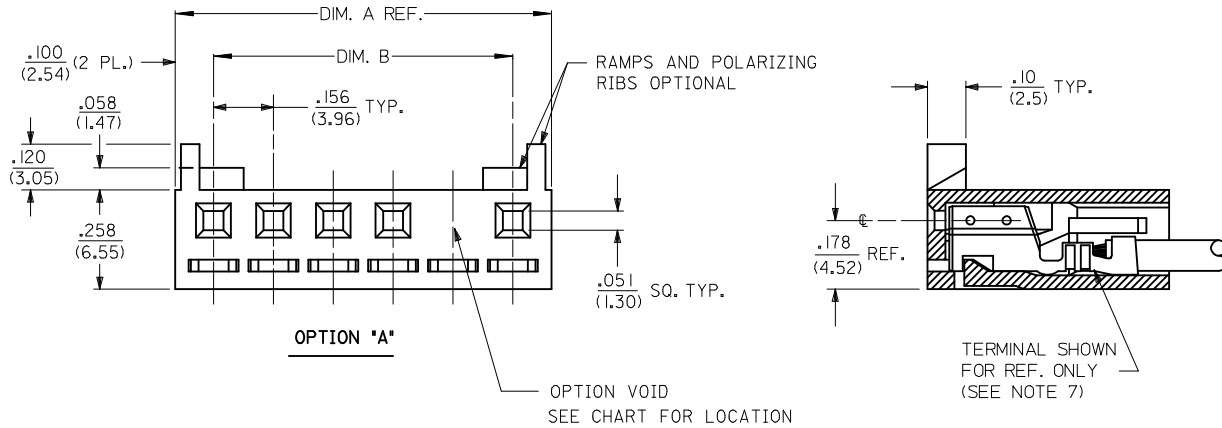


NOTES:

- 1) MATERIAL: GLASS FILLED POLYESTER, 94V-0  
MATERIAL NUMBERS 43061-0\*\*\* : COLOR - NATURAL  
MATERIAL NUMBERS 43061-1\*\*\* : COLOR - BLACK
- 2) FINISH: SEE TERMINAL DWGS.
- 3) FOR ADDITIONAL HOUSING INFORMATION REFER TO DWG. NO. 5195 OR P.S. 5195.  
FOR ADDITIONAL TERMINAL INFORMATION REFER TO DWG. NO. 5194 OR 5225, OR P.S. 5194 OR 5225.
- 4) PACKAGING SPECIFICATION: PK-43061-001
- 5) MATES WITH .156/(3.96) CENTER HEADERS AND .045/(1.14) SQUARE PINS.
- 6) CONNECTOR IS DESIGNED FOR USE WITH 18-28 AWG WIRE.
- 7) HOUSING IS DESIGNED FOR USE WITH 5194 (18-22 AWG) AND 5225 (24-28 AWG) TERMINALS.
- 8) THIS PART CONFORMS TO CLASS B REQUIREMENTS OF COSMETIC SPECIFICATION PS-45499-002.

NO. OF CKTS.	DIM. A	DIM. B
2	.357 (9.06)	.156 (3.96)
3	.513 (13.02)	.312 (7.92)
4	.669 (16.98)	.468 (11.88)
5	.824 (20.94)	.624 (15.84)
6	.980 (24.90)	.780 (19.80)
7	1.136 (28.86)	.935 (23.76)
8	1.292 (32.82)	1.091 (27.72)
9	1.448 (36.78)	1.247 (31.68)
10	1.604 (40.74)	1.403 (35.64)
11	1.760 (44.70)	1.560 (39.60)
12	1.916 (48.66)	1.715 (43.56)



2	F5
1	F5
SHT. REV.	

ADD 43061-0040 EC NO: UCP2013-2764 DRWN:MKIPPER 2013/01/08 CHKD:NGUYEN 2013/01/08 APPR:FSMLTH 2013/05/12	QUALITY SYMBOLS	GENERAL TOLERANCES (UNLESS SPECIFIED)	DIMENSION STYLE IN/MM	SCALE 4:1	DESIGN UNITS INCH	THIRD ANGLE PROJECTION
	▽=0	4 PLACES ± --- ± ---	DRAWN BY DATE ROBERTS 1991/10/17	TITLE SPOX .156/(3.96) RECEPTACLE HOUSING		
	▽=0	3 PLACES ± --- ± .010	CHECKED BY DATE PATEL 1991/10/17			
	▽=0	2 PLACES ± 0.25 ± .014	APPROVED BY DATE LENZ 1991/10/17	MATERIAL NO. DOCUMENT NO. SEE CHART SD-43061		
REV	F5	0 PLACE ± ±	ANGULAR ±1/2°	SHEET NO. 1 OF 2		
DRAFT WHERE APPLICABLE MUST REMAIN WITHIN DIMENSIONS			THIS DRAWING CONTAINS INFORMATION THAT IS PROPRIETARY TO MOLEX INCORPORATED AND SHOULD NOT BE USED WITHOUT WRITTEN PERMISSION			

13			12			11			10			9			8			7			6			5			4			3			2			1		
HOUSING OPTION: A						HOUSING OPTION: A						HOUSING OPTION: B						HOUSING OPTION: B																				
COLOR WHITE						COLOR BLACK						COLOR WHITE						COLOR BLACK																				
NO OF CKTS	MATERIAL NO	VOID LOC	NO OF CKTS	MATERIAL NO	VOID LOC	NO OF CKTS	MATERIAL NO	VOID LOC	NO OF CKTS	MATERIAL NO	VOID LOC	NO OF CKTS	MATERIAL NO	VOID LOC	NO OF CKTS	MATERIAL NO	VOID LOC	NO OF CKTS	MATERIAL NO	VOID LOC	NO OF CKTS	MATERIAL NO	VOID LOC	NO OF CKTS	MATERIAL NO	VOID LOC	NO OF CKTS	MATERIAL NO	VOID LOC	NO OF CKTS	MATERIAL NO	VOID LOC						
2	43061-0002		2	43061-1002		2	43061-0013		2	43061-1013		2	43061-1013		2	43061-1013																						
3	43061-0003		3	43061-1003		3	43061-0014		3	43061-1014		3	43061-1014		3	43061-1014																						
4	43061-0004		4	43061-1004		4	43061-0015		4	43061-1015		4	43061-1015		4	43061-1015																						
5	43061-0005		5	43061-1005		5	43061-0016		5	43061-1016		5	43061-1016		5	43061-1016																						
6	43061-0006		6	43061-1006		6	43061-0017		6	43061-1017		6	43061-1017		6	43061-1017																						
7	43061-0007		7	43061-1007		7	43061-0018		7	43061-1018		7	43061-1018		7	43061-1018																						
8	43061-0008		8	43061-1008		8	43061-0019		8	43061-1019		8	43061-1019		8	43061-1019																						
9	43061-0009		9	43061-1009		9	43061-0020		9	43061-1020		9	43061-1020		9	43061-1020																						
10	43061-0010		10	43061-1010		10	43061-0021		10	43061-1021		10	43061-1021		10	43061-1021																						
11	43061-0011		11	43061-1011		11	43061-0022		11	43061-1022		11	43061-1022		11	43061-1022																						
12	43061-0012		12	43061-1012		12	43061-0023		12	43061-1023		12	43061-1023		12	43061-1023																						
5	43061-0030	3	5	43061-1030	3																																	
7	43061-0031	4	7	43061-1031	4																																	
9	43061-0032	5	9	43061-1032	5																																	
8	43061-0033	7	8	43061-1033	7																																	
9	43061-0034	7	9	43061-1034	7																																	
5	43061-0035	4	5	43061-1035	4																																	
8	43061-0036	2																																				
7	43061-0037	2, 5, 6																																				
7	43061-0038	1, 3, 5																																				
7	43061-0039	3, 5, 7																																				
7	43061-0040	3, 6																																				

<b>SEE SHEET 1</b> EC NO: UCP2013-2764 DRAWN: KIPPER 2013/01/08 CHKD: NGUYEN 2013/01/08 APPR: F. SMITH 2013/05/21 <b>F5</b>	QUALITY SYMBOLS 	GENERAL TOLERANCES (UNLESS SPECIFIED) <table border="1"> <tr><th></th><th>mm</th><th>INCH</th></tr> <tr><td>4 PLACES</td><td>± .005</td><td>± .0002</td></tr> <tr><td>3 PLACES</td><td>± .004</td><td>± .00015</td></tr> <tr><td>2 PLACES</td><td>± .003</td><td>± .0001</td></tr> <tr><td>1 PLACE</td><td>± .002</td><td>± .00008</td></tr> <tr><td>0 PLACE</td><td>± .001</td><td>± .00005</td></tr> </table>		mm	INCH	4 PLACES	± .005	± .0002	3 PLACES	± .004	± .00015	2 PLACES	± .003	± .0001	1 PLACE	± .002	± .00008	0 PLACE	± .001	± .00005	DIMENSION STYLE <b>IN/MM</b> DRAWN BY: ROBERTS DATE: 1991/11/06 CHECKED BY: PATEL DATE: 1991/11/06 APPROVED BY: LENZ DATE: 1991/11/06	SCALE <b>4:1</b> DESIGN UNITS <b>INCH</b>	THIRD ANGLE PROJECTION
		mm	INCH																				
	4 PLACES	± .005	± .0002																				
	3 PLACES	± .004	± .00015																				
	2 PLACES	± .003	± .0001																				
1 PLACE	± .002	± .00008																					
0 PLACE	± .001	± .00005																					
TITLE <b>SPOX .156/(3,96) RECEPTACLE HOUSING</b>																							
MATERIAL NO. <b>SEE CHART</b>			DOCUMENT NO. <b>SD-43061</b>																				
DRAFT WHERE APPLICABLE MUST REMAIN WITHIN DIMENSIONS THIS DRAWING CONTAINS INFORMATION THAT IS PROPRIETARY TO MOLEX INCORPORATED AND SHOULD NOT BE USED WITHOUT WRITTEN PERMISSION																							