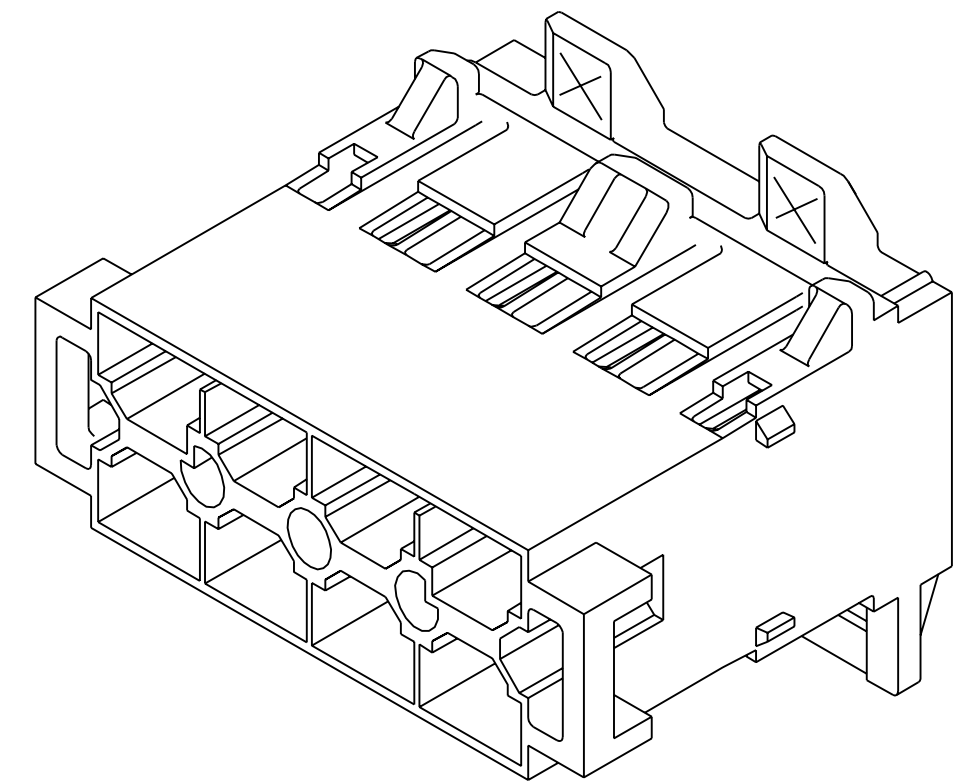
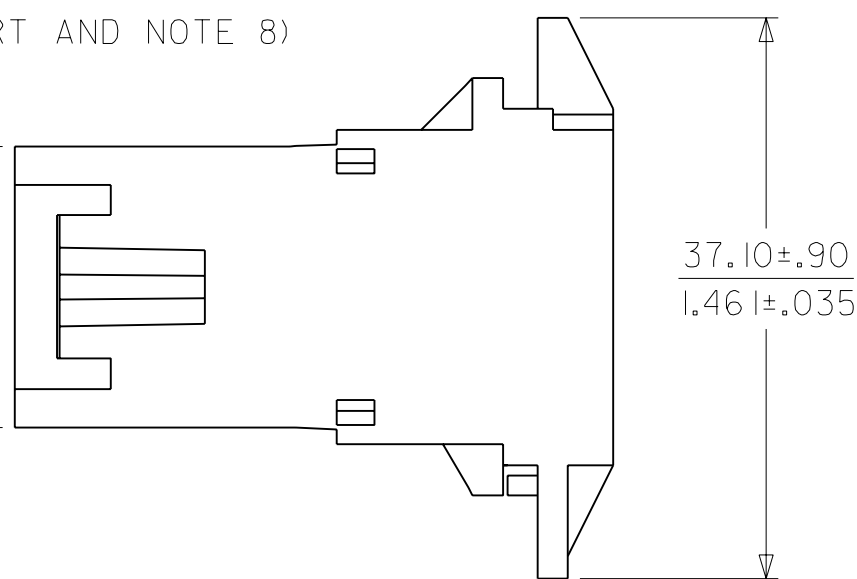
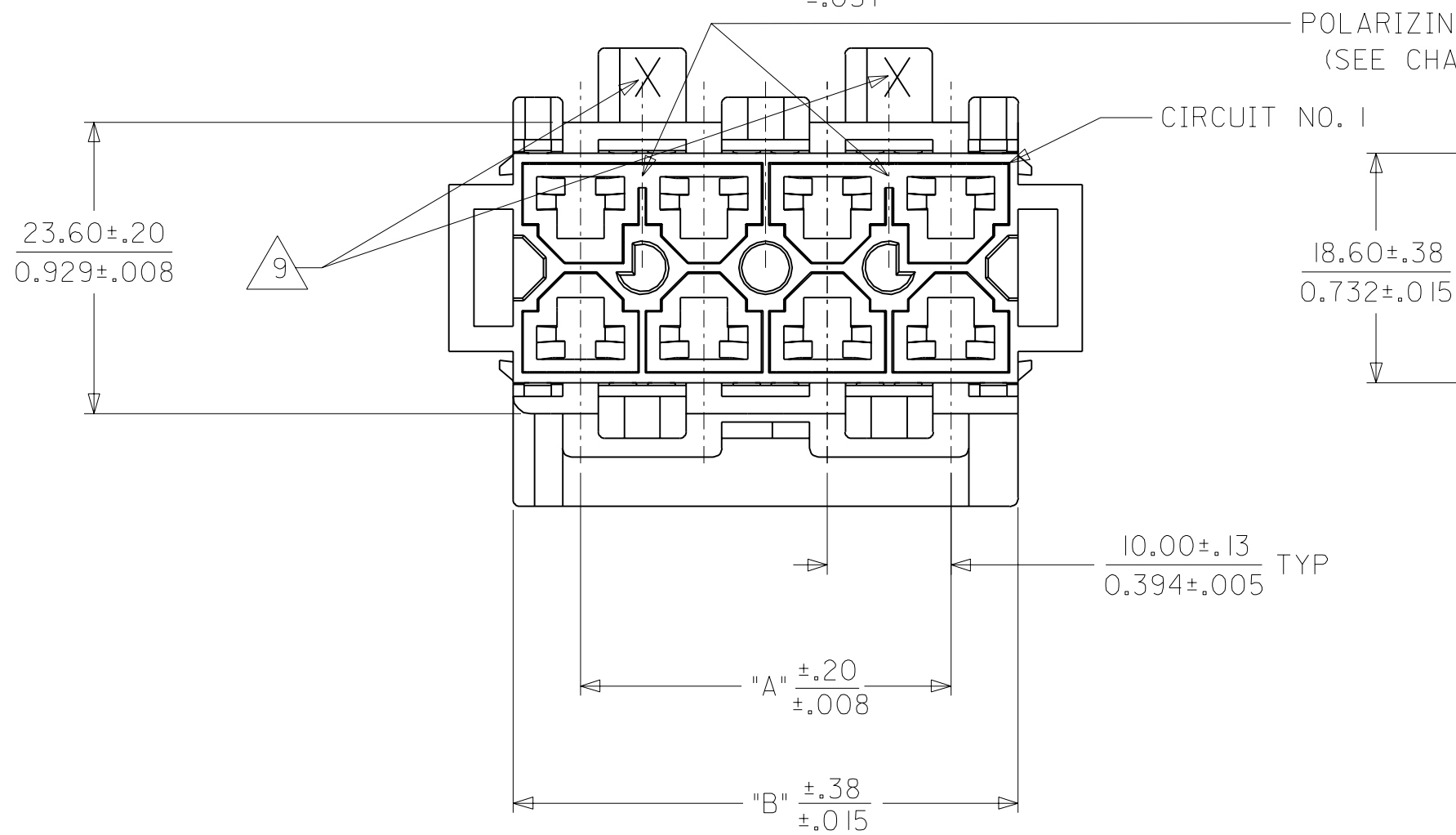
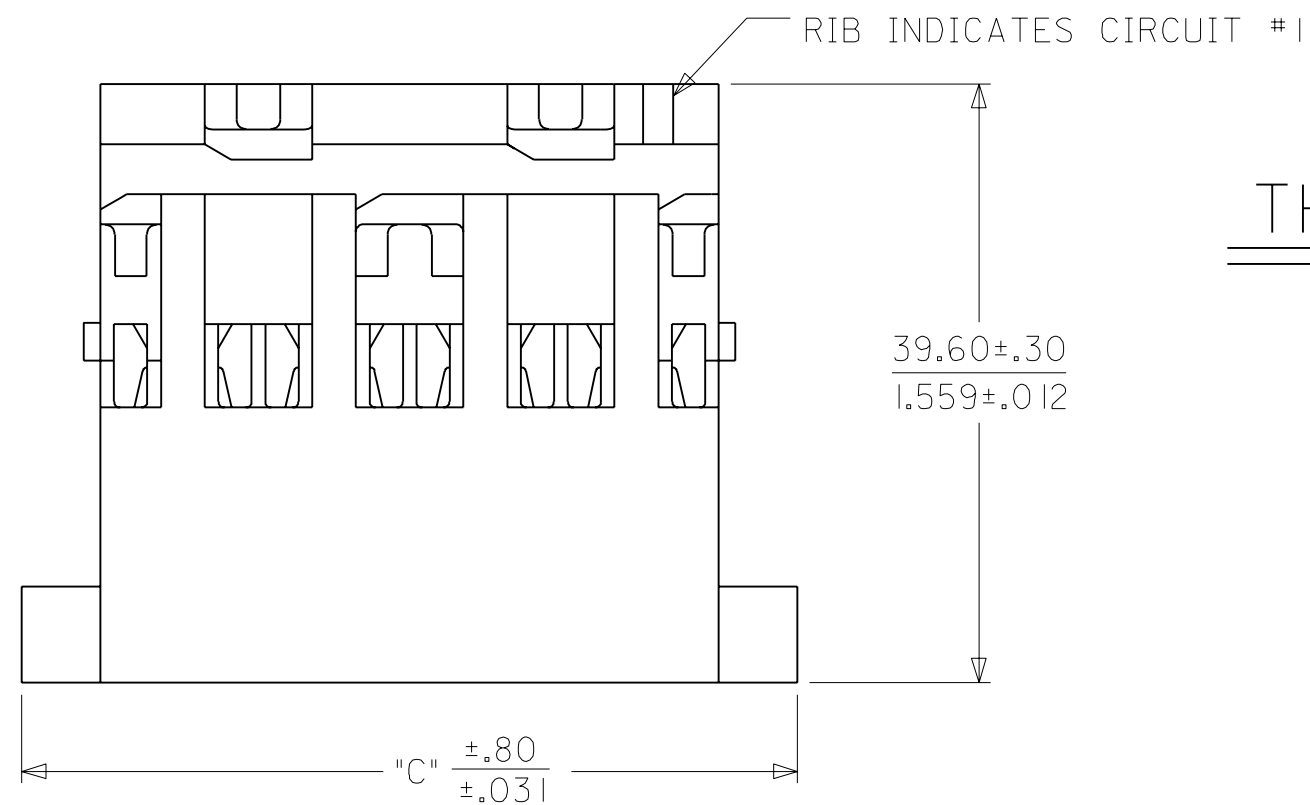


MATERIAL NUMBER	POSITION NUMBER	DIM. "A"	DIM. "B"	DIM. "C"	QUANTITY OF POLARIZING SLOTS	PANEL THICKNESS ACCOMMODATED
43938-2201	6	$\frac{20.00}{.787}$	$\frac{30.90}{1.216}$	$\frac{41.30}{1.626}$	1	$\frac{1.30/1.76}{.051/.069}$
43938-2202	8	$\frac{30.00}{1.181}$	$\frac{40.90}{1.610}$	$\frac{51.30}{2.020}$	2	
43938-2203	10	$\frac{40.00}{1.575}$	$\frac{50.90}{2.004}$	$\frac{61.30}{2.413}$	2	
43938-2204	12	$\frac{50.00}{1.968}$	$\frac{60.90}{2.398}$	$\frac{71.30}{2.807}$	2	
43938-2205	14	$\frac{60.00}{2.362}$	$\frac{70.90}{2.791}$	$\frac{81.30}{3.201}$	2	

NOTES:

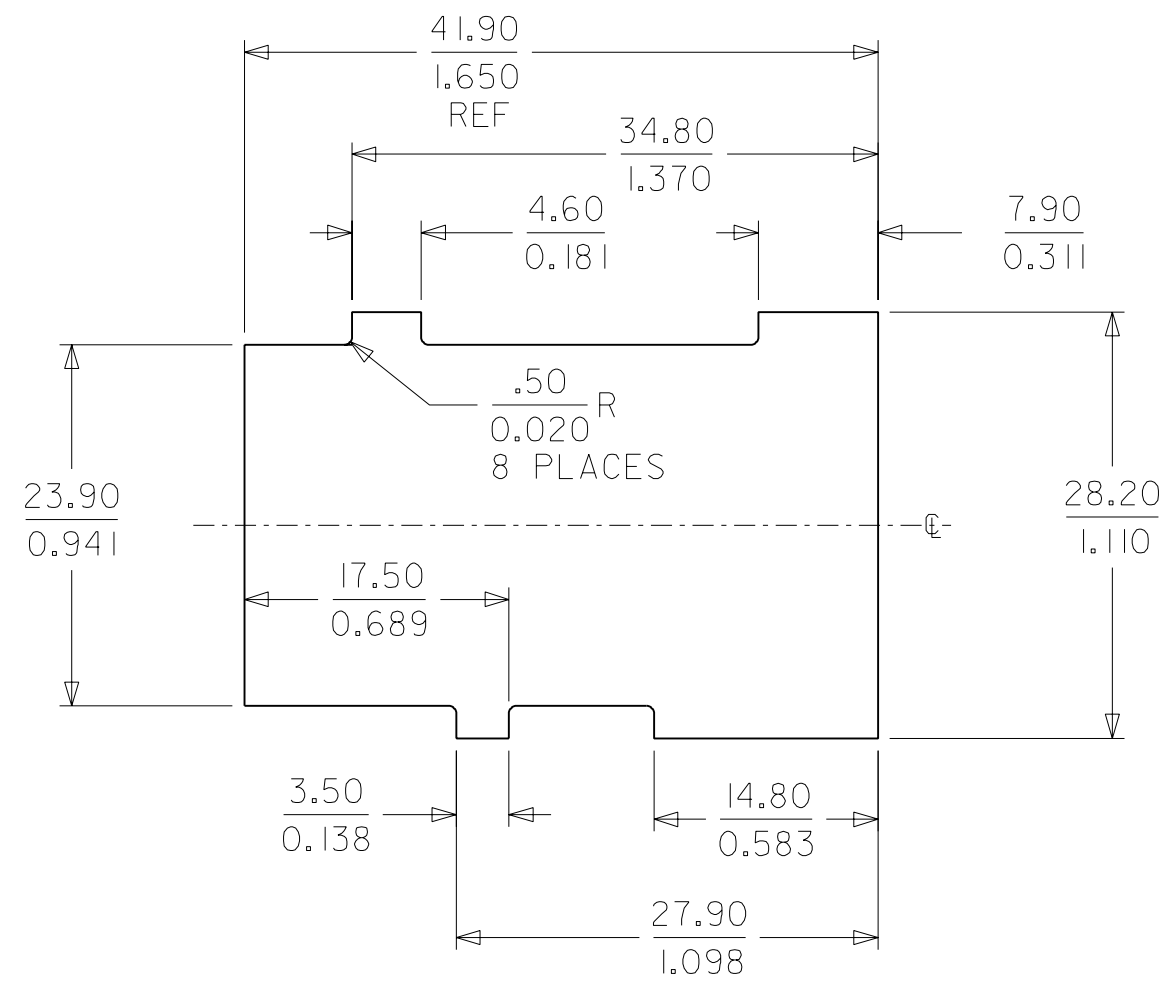
- MATERIAL: UNFILLED POLYESTER, U.L. 94V-0, COLOR: BLACK
 - FINISH: NONE
 - PRODUCT SPEC.: PS-42815-001
 - THIS PART IS DESIGNED TO USE MALE CRIMP TERMINAL #42817.
 - THIS PART IS DESIGNED TO USE T.P.A. #43980.
 - THIS PART IS DESIGNED TO MATE WITH RECEPTACLE HOUSING #43914.
 - SEE SHEET 2 FOR PANEL CUT-OUT DETAILS.
 - POLARIZING SLOTS TO BE LOCATED BETWEEN CIRCUITS ON EITHER END OF HOUSING OF THE CIRCUIT I ROW AS SHOWN.
- EXCEPTION: THE 6 CIRCUIT HOUSING WILL HAVE A SINGLE SLOT ON THE CIRCUIT I END ONLY.
- 9 AN "X" IS ENGRAVED AS SHOWN, TO DESIGNATE THAT THE PART ACCOMMODATES A 1.30/1.76 PANEL THICKNESS.
10. FOR PACKAGING INFORMATION SEE PK-43938-001.

THIS PRODUCT MUST NOT BE USED WITHOUT THE T.P.A.

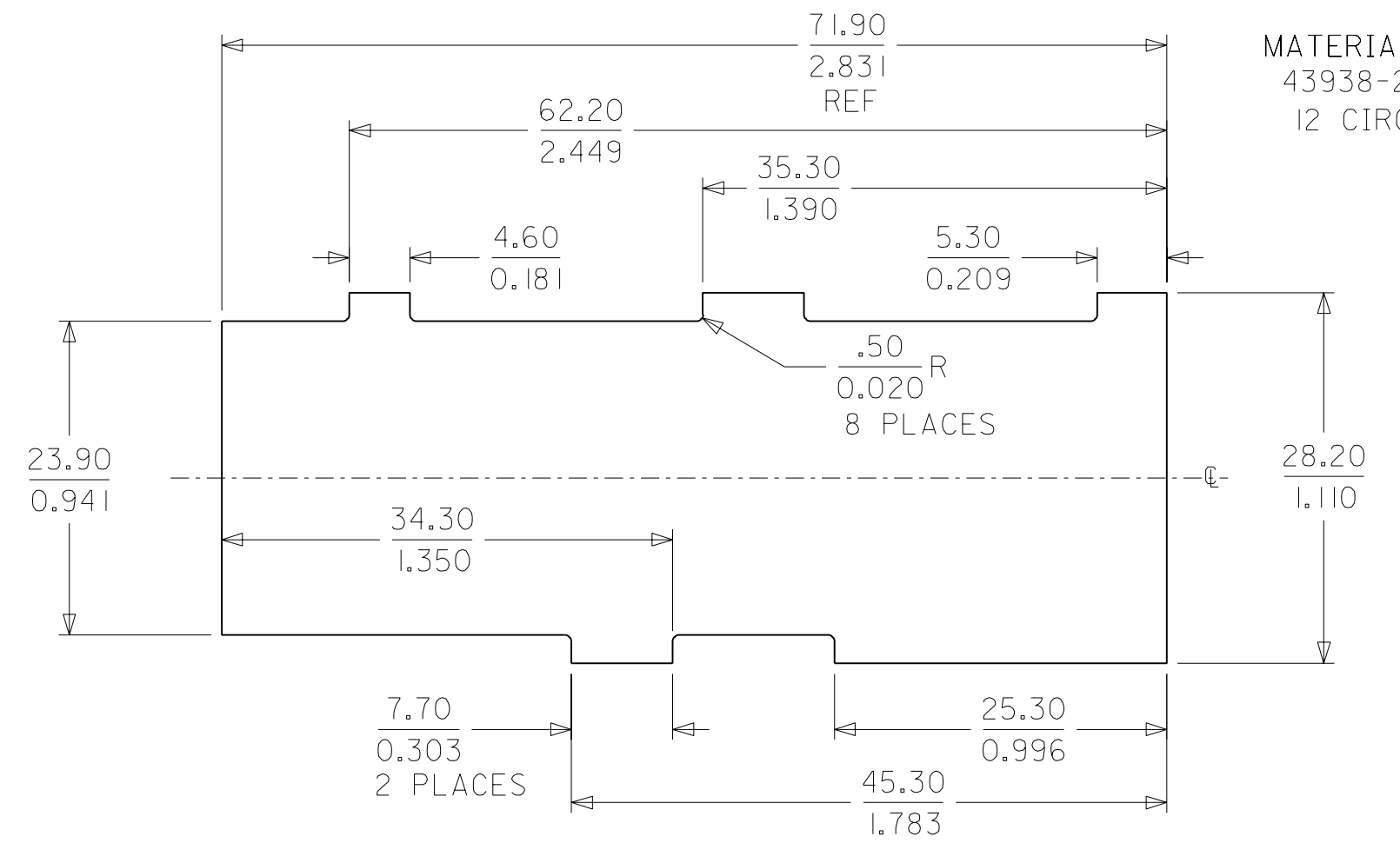


ADD PACKAGING EC NO. UCP2003-1914 DRWN: COMERC 3/07/03 CHK: COMERC 3/07/03 APPR: COMERC 3/07/03	QUALITY SYMBOLS MAJOR $\nabla=0$ CRITICAL $\nabla_c=0$	GENERAL TOLERANCES: (UNLESS SPECIFIED)		SCALE 2 : 1	DESIGN UNITS <input checked="" type="checkbox"/> mm <input type="checkbox"/> INCH	THIRD ANGLE PROJECTION <input checked="" type="checkbox"/>	DIMENSIONS: <input checked="" type="checkbox"/> mm <input type="checkbox"/> INCH <input type="checkbox"/> mm ONLY	SHEET NO. 2 REV A1
		4 PLACES $\pm 0.---$ mm $\pm .---$ INCH	DRAWN BY & DATE COMERC 99/12/06	TITLE: DUAL ROW PANEL MT. PLUG, FOR THIN PANELS MINI-FIT SR. SERIES			REVISE ON CAD ONLY	
		3 PLACES $\pm 0.---$ mm $\pm .---$ INCH	CHECKED BY & DATE COMERC 99/12/06	MOLEX INCORPORATED				
		2 PLACES $\pm 0.---$ mm $\pm .---$ INCH	APPROVED BY & DATE COMERC 99/12/06	MATERIAL NO. SEE CHART	DRAWING NO. SD-43938-003	SHEET NO. 1 OF 2		
1 PLACE $\pm 0.---$ mm $\pm .---$ INCH	ANGULAR: $\pm \text{---}^\circ$	CAD FILENAME	THIS DRAWING CONTAINS INFORMATION THAT IS PROPRIETARY TO MOLEX INCORPORATED AND SHOULD NOT BE USED WITHOUT WRITTEN PERMISSION.			SIZE C		
DRAFT WHERE APPLICABLE MUST REMAIN WITHIN DIMENSIONS		DUAL ROW PANEL MT. PLUG, FOR THIN PANELS MINI-FIT SR. SERIES						

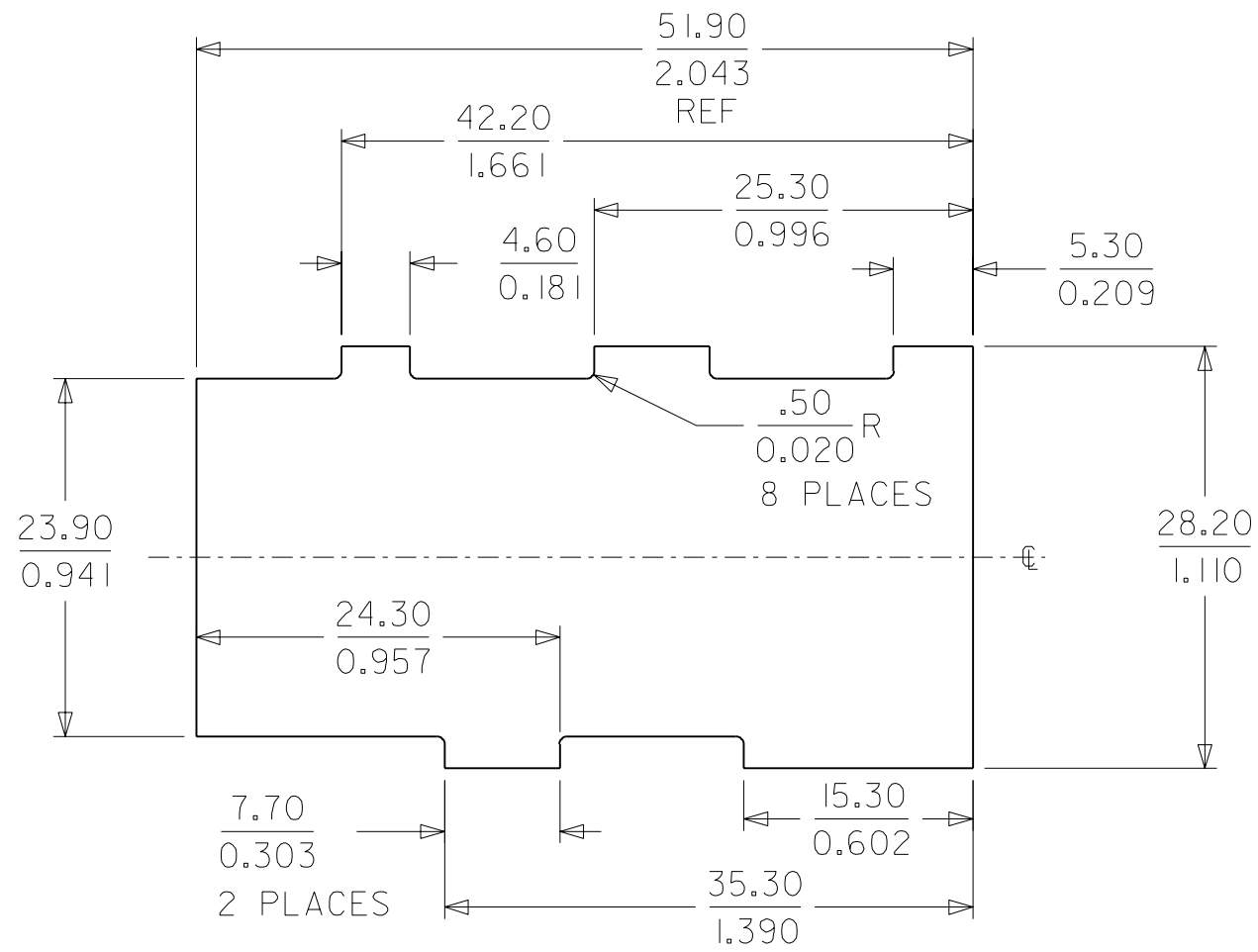
MATERIAL NO.:
43938-2201
6 CIRCUIT



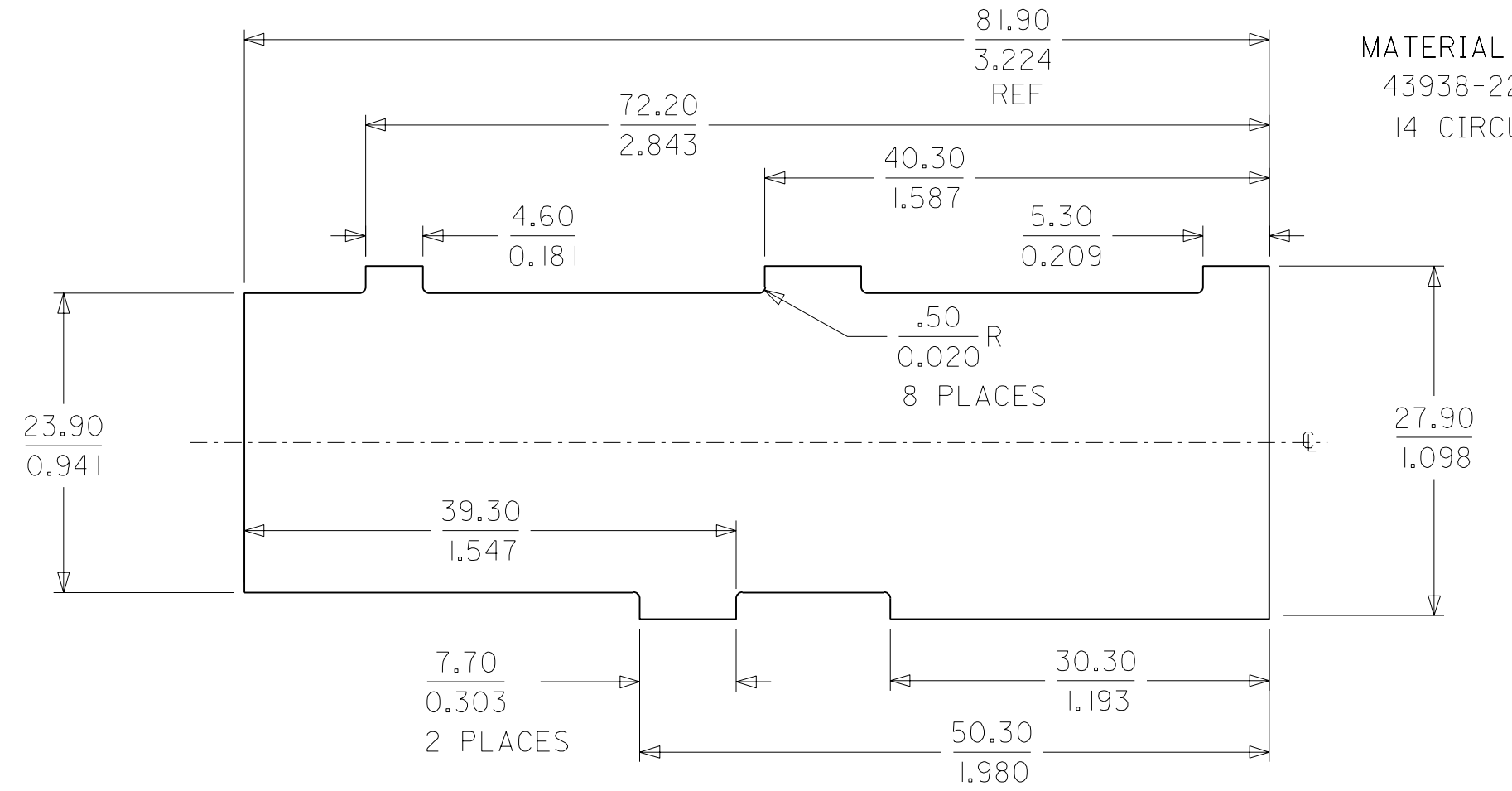
MATERIAL NO.:
43938-2204
12 CIRCUIT



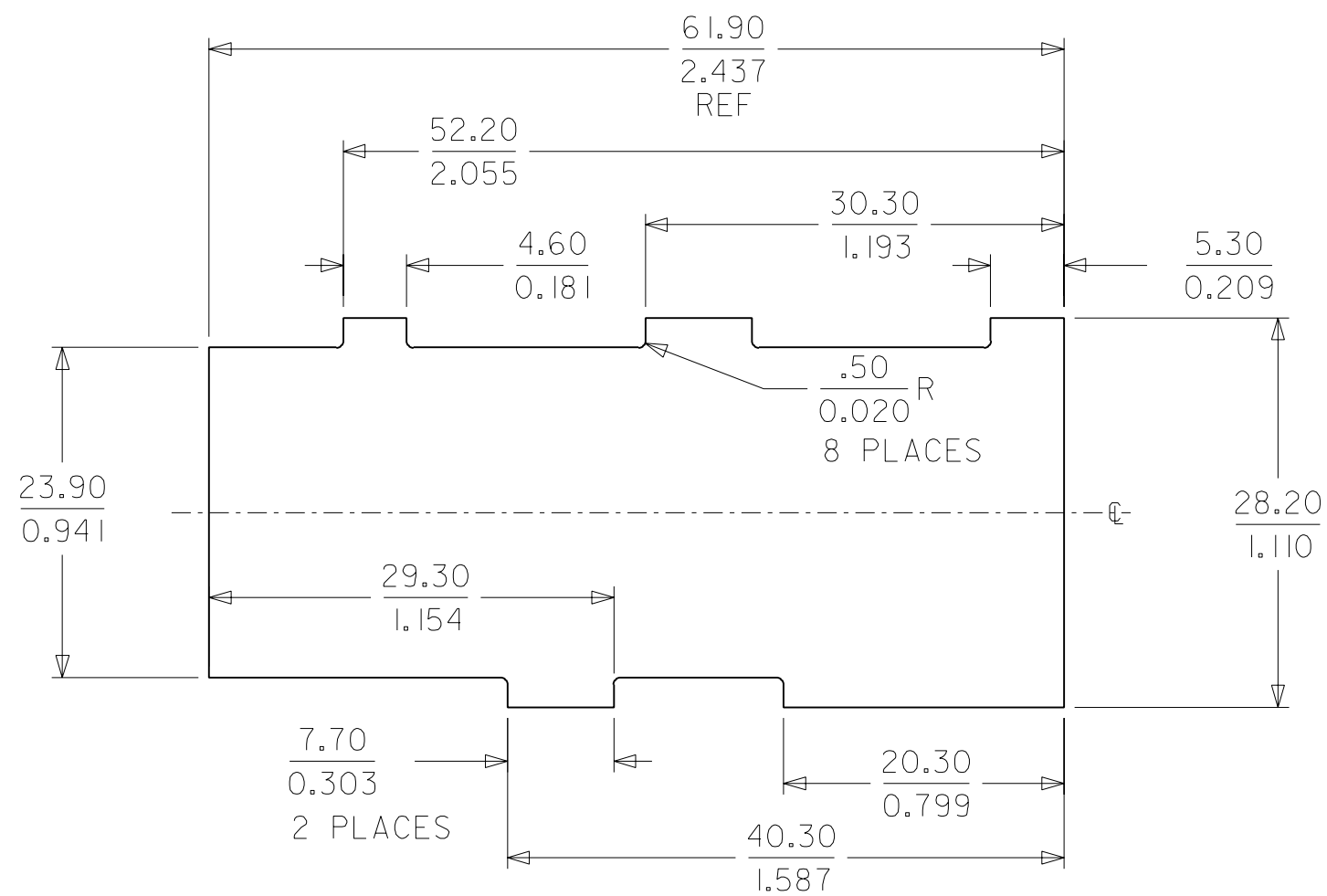
MATERIAL NO.:
43938-1102
43938-2202
8 CIRCUIT



MATERIAL NO.:
43938-2205
14 CIRCUIT



MATERIAL NO.:
43938-2203
10 CIRCUIT



PANEL OPENINGS SHOWN FROM OUTSIDE OF BOX.
SEE CHART FOR PANEL THICKNESS.

SEE SHEET 1 EC NO. UCP2003-1914 DRWN: COMERC I 3/07/03 CHK: COMERC I 3/07/03 APPR: COMERC I 3/07/03	DESCRIPTION REV	QUALITY SYMBOLS MAJOR $\nabla=0$ CRITICAL $\nabla_c=0$	GENERAL TOLERANCES: (UNLESS SPECIFIED)	SCALE 2 : 1	DESIGN UNITS <input checked="" type="checkbox"/> mm <input type="checkbox"/> INCH	THIRD ANGLE PROJECTION <input checked="" type="checkbox"/> mm <input type="checkbox"/> INCH	DIMENSIONS: <input checked="" type="checkbox"/> mm <input type="checkbox"/> INCH <input type="checkbox"/> mm ONLY	SHT	REV
			4 PLACES $\pm 0.---$ $\pm .---$		DRAWN BY & DATE COMERC I 99/12/06	TITLE: DUAL ROW PANEL MT. PLUG, FOR THIN PANELS MINI-FIT SR. SERIES MOLEX INCORPORATED			
			3 PLACES $\pm 0.---$ $\pm .004$		CHECKED BY & DATE COMERC I 99/12/06				
			2 PLACES ± 0.10 $\pm .---$		APPROVED BY & DATE COMERC I 99/12/06				
	1 PLACE $\pm 0.---$ $\pm .---$		CAD FILENAME	MATERIAL NO.	DRAWING NO.		SHEET NO.		
		ANGULAR: $\pm \text{---}^\circ$	DRAFT WHERE APPLICABLE MUST REMAIN WITHIN DIMENSIONS	THIS DRAWING CONTAINS INFORMATION THAT IS PROPRIETARY TO MOLEX INCORPORATED AND SHOULD NOT BE USED WITHOUT WRITTEN PERMISSION.			SIZE C		