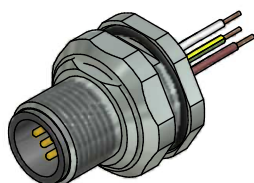


**Contact assignment:**

- 1 brown
- 2 white
- 3 blue
- 4 black
- 5 green-yellow

**Contact assignment:**

- 1 white
- 2 brown
- 3 green
- 4 yellow
- 5 grey
- 6 pink
- 7 blue
- 8 red



**Technical specification:**

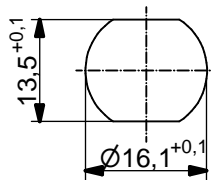
Rated voltage: IEC 61076-2-101	4pos 250 V	5pos 60 V	8pos 30 V
Current rating: IEC 61076-2-101	4/5pos 4 A at 40°C	8pos 2 A at 40°C	
Insulation resistance: IEC 60512	≥100 MΩ		
Pollution degree: IEC 60664-1	3/2		
Degree of protection: IEC 60529	IP 67, in mated condition		
Temperature range: IEC 60664-1	-30°C ... +80°C		
Mating cycles: IEC 60512-9a	≥100		

**Materials:**

Contact:	CuZn
Contact plating:	Nickel, gold plated
Contact carrier:	PBT GF, UL 94
Sealing:	NBR
Counternut:	CuZn, nickel plated
Socket housing:	CuZn, nickel plated
Grouting:	Polyurethane-resin, UL 94

**Installation specification:**

Recommended torque:	1-1,2 Nm
Conec installation tool:	Torque wrench: 36-000200 Insert across flats 19: 36-000250



Minimum wall thickness 1,5mm, alternativ panel cut-out d=16,1

Part no:	Description:	Pos	Length L:	Wire:
43-01012	SAL - 12 - FSH4 - 0,5	4	0,5m	AWG 24 PVC, UL
43-xxxxx	SAL - 12 - FSH4 - ...	4	x	
43-01013	SAL - 12 - FSH5 - 0,5	5	0,5m	
43-xxxxx	SAL - 12 - FSH5 - ...	5	x	
43-01014	SAL - 12 - FSH8 - 0,5	8	0,5m	
43-xxxxx	SAL - 12 - FSH8 - ...	8	x	

DO NOT ALTER CAD DRAWING BY HAND Directive 2002/95/EC RoHS compliant	Index: b 31.3.11 fro Ä3914 Data sheet revised, technical specification changed, Sleeve side B removed	dim. in mm	title: <b>Male socket M12x1 with wire, backmounting</b>								
	tolerance of wire: L ≤ 0,5m: L + 20mm L > 0,5m: L + 4%	<table border="1" style="width: 100%; border-collapse: collapse;"> <tr> <td style="width: 30px;"></td> <td style="width: 30px;">date</td> <td style="width: 30px;">name</td> </tr> <tr> <td>drawn</td> <td>01.03.07</td> <td>Fromm</td> </tr> <tr> <td>appd.</td> <td>01.03.07</td> <td>Mankopf</td> </tr> </table>				date	name	drawn	01.03.07	Fromm	appd.
		date	name								
	drawn	01.03.07	Fromm								
appd.	01.03.07	Mankopf									
THIS DRAWING MAY NOT BE COPIED OR REPRODUCED IN ANY WAY, AND MAY NOT BE PASSED ON TO A THIRD PARTY WITHOUT WRITTEN PERMISSION. OWNERSHIP AND COPYRIGHT OF CONEC GmbH			dwg no: <b>43K1A215</b>								
			part no:								