

Technical specification:

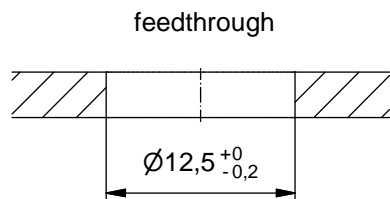
Rated voltage: IEC 61076-2-101	4pos 5pos 250 V 60 V
Current rating: IEC 61076-2-101	4 A at 40°C
Insulation resistance: IEC 60512-2	≥100 MΩ
Pollution degree: IEC 60664-1	3/2
Degree of protection: IEC 60529	IP 67, in mated condition
Temperature range: IEC 60664-1	-30°C ... +85°C
Mating cycles: IEC 60512-9a	≥100

Materials:

Contact:	CuZn
Contact plating:	Nickel, gold plated
Contact carrier:	PA 6.6, UL 94
Sealing:	FPM
Socket housing:	CuZn, nickel plated
Shroud:	Spring steel
-plating:	Tin plated

Installation specification:

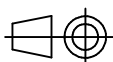
recommended torque:	0,8-1 Nm
Conec installation tool:	Torque wrench: 36-000200 Insert across flats 15: 36-000320



Part no:	Description:	Pos	Note:
43-01186	SAL - 12 - FKH4 - X5,5	4	
43-01187	SAL - 12S - FKH4 - X5,5	4	with shroud
43-01188	SAL - 12 - FKH5 - X5,5	5	
43-01189	SAL - 12S - FKH5 - X5,5	5	with shroud

DO NOT ALTER CAD DRAWING BY HAND
Directive 2002/95/EC RoHS compliant

Index: b 24.03.11 fro Ä3914
Data sheet revised, technical specification changed



dim. in mm

	date	name
drawn	15.10.07	Fromm
appd.	18.10.07	W. Schmidt

title:
**Female socket M12x1 axial,
backmounting, dip solder, X5,5**

dwg no:

43K1A503

part no:



THIS DRAWING MAY NOT BE COPIED OR REPRODUCED IN ANY WAY, AND MAY NOT BE PASSED ON TO A THIRD PARTY WITHOUT WRITTEN PERMISSION.
OWNERSHIP AND COPYRIGHT OF CONEC GmbH