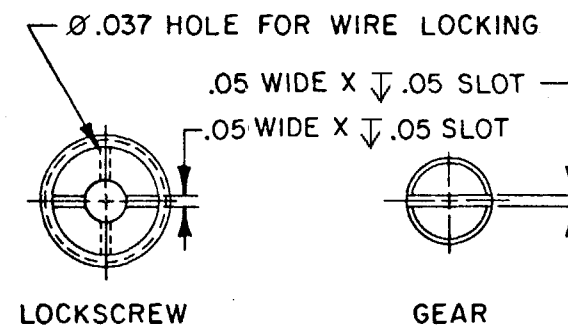
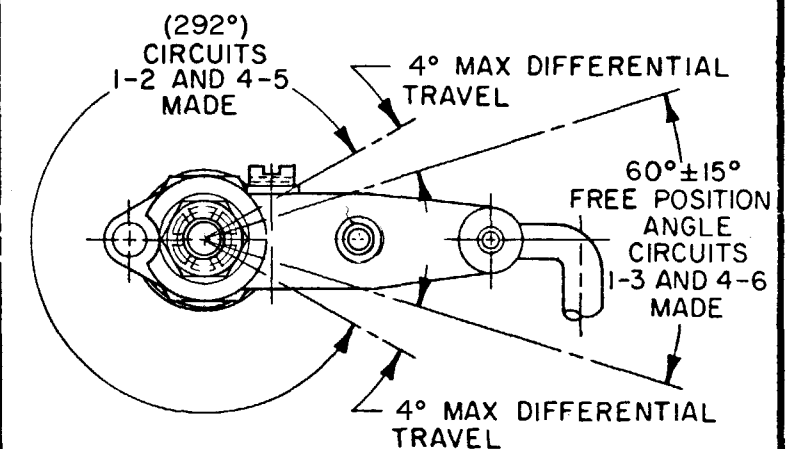


## FED. MFG. CODE 21929

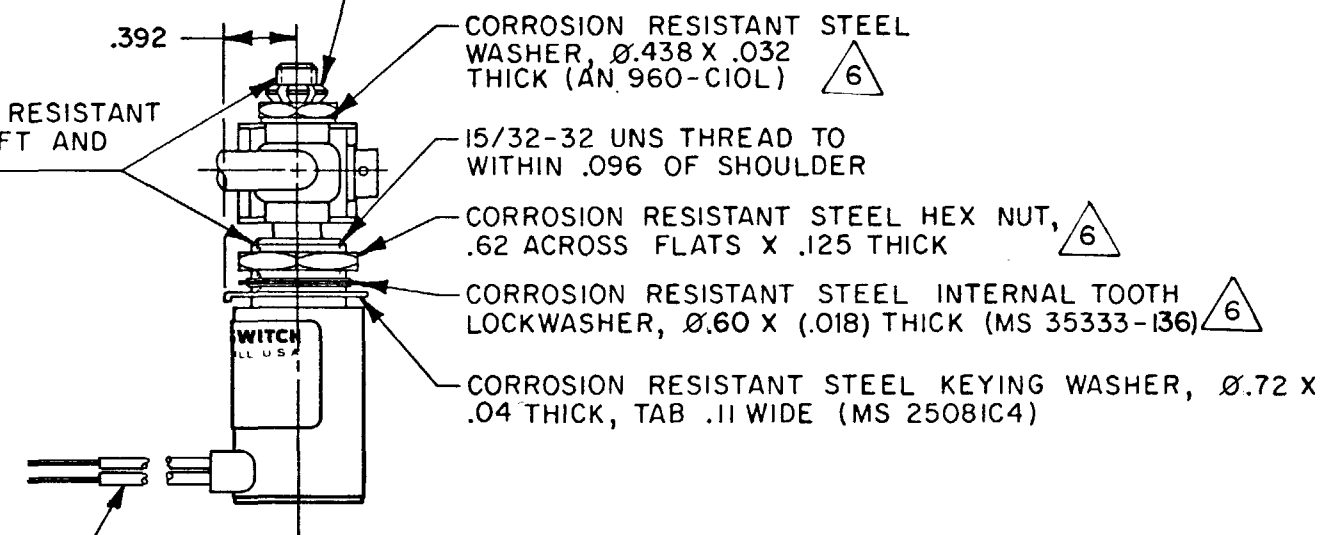
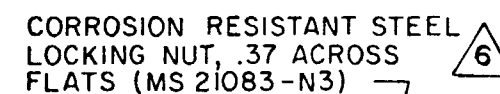
CATALOG LISTING  
442EN222-6



LEVER ADJUSTMENT DETAIL  
SCALE 2:1



CIRCUIT DIAGRAM



6X NO.22 WIRE LEAD PER M22759/32-22-9 ✓  
MARKED WITH CIRCUIT IDENTIFICATION AND  
WIRE GAGE (1-22,2-22 ETC) PER MIL-W-5088

THIS DRAWING COVERS A PROPRIETARY ITEM AND IS THE PROPERTY OF MICRO SWITCH, A DIVISION OF HONEYWELL. THIS DRAWING IS NOT TO BE COPIED OR USED WITHOUT THE APPROVAL OF MICRO SWITCH.

THIRD ANGLE PROJECTION

SCALE FULL

DO NOT SCALE PRINT

## TOLERANCES

ELECTRICAL DATA

CONTACT ARRANGEMENT

2X S P D T  $\triangle 7$

7

---

29 VDC

---

LOAD

SEA LEVEL

50,000 FT

550

SEA LEVEL  
7

50,000 Ft.

PRETRAVEL  
DIFFERENTIAL TRAVEL  
OVERTRAVEL  
FREE POSITION

SEE DETAIL

SIEVERT ROSELECTION, USED TREATED CONTRASTS

	DIM. mm	TOL. mm/in	DIM. in	TOL. mm/in
NO PLACES	X	1/04		
ONE PLACE	X, X	0.4/016	X X	0.8/010
TWO PLACES	X, XX	0.15/006	X XX	0.38/016
THREE PLACES			X XXX	0.13/005

ANGLES	SIMETRIC	US CUSTOMARY
--------	----------	--------------

DESIGN UNITS	<input type="checkbox"/>	<input checked="" type="checkbox"/>
--------------	--------------------------	-------------------------------------

RAW MATERIAL-COMMERCIAL STANDARD  
MICRO SWITCH STANDARDS APPLY

DIMENSIONS ARE TO BE MET BEFORE  
PROTECTIVE COATINGS ARE APPLIED

WEIGHT 73.07 MAY

WEIGHT 7.5 OZ MAX

- NOTES
- 1 - CORROSION RESISTANT STEEL ENCLOSURE
  - 2 - SWITCH SEALED PER MIL-S-8805 SYMBOL 4
  - 3 - CIRCUIT DIAGRAM AND CATALOG LISTING ARE SHOWN ON NAMEPLATE
  - 4 - UNIT PROVIDES NO SHAFT RESTORING TORQUE. THE ACTUATING DEVICE MUST CONTROL MOVEMENT OF THE SHAFT
  - 5 DO NOT APPLY MORE THAN 20-25 INCH-POUNDS OF TORQUE WHEN TIGHTENING LOCKING NUT
  - 6 HARDWARE MAY BE PACKAGED UNASSEMBLED PER MIL-S-8805
  - 7 SILVER PROJECTION, GOLD PLATED CONTACTS