

**MICRO SWITCH**  
FREEPORT, ILLINOIS U.S.A.  
A DIVISION OF HONEYWELL  
FED. MFG. CODE 91929

## SWITCH - ENCLOSED

CATALOG LISTING

442EN1-6

442EN1-6

M

DRAWING  
NUMBER

ISSUE

2526

### REVISIONS

A	CO44351	KAK	26 FEB 80
B	CO47573	TSM	11 AUG 80
C	CO49806	GRT	28 SEP 81
D	CO57370	JAP	14 MAY 85

REPLACES

SR-8607

CHECK

CHECK

CHECK

CHECK

CHECK

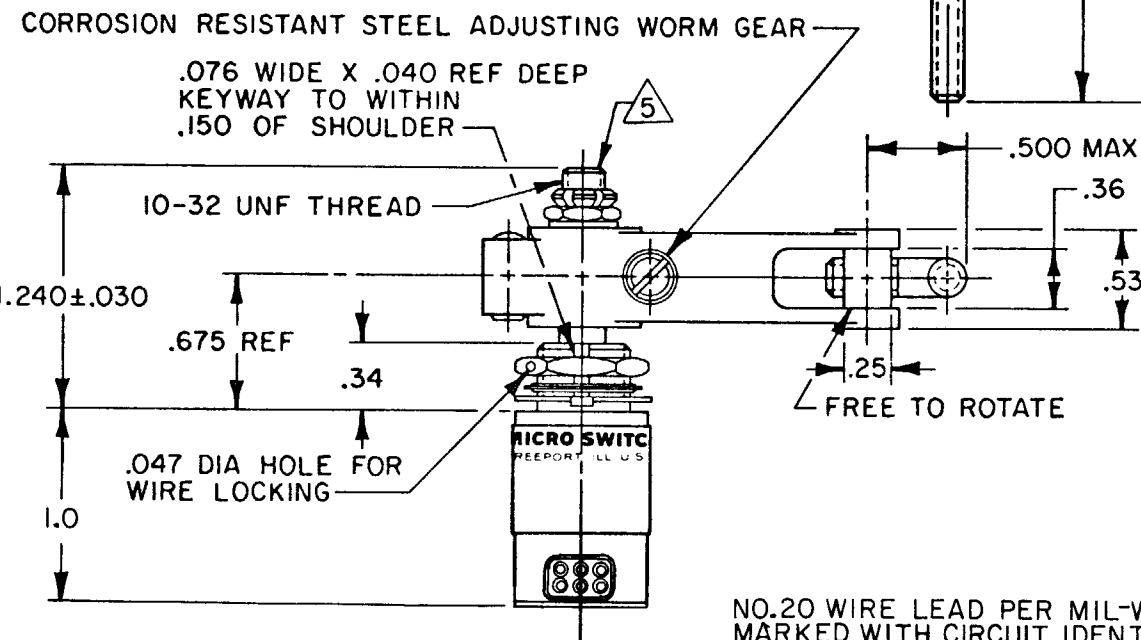
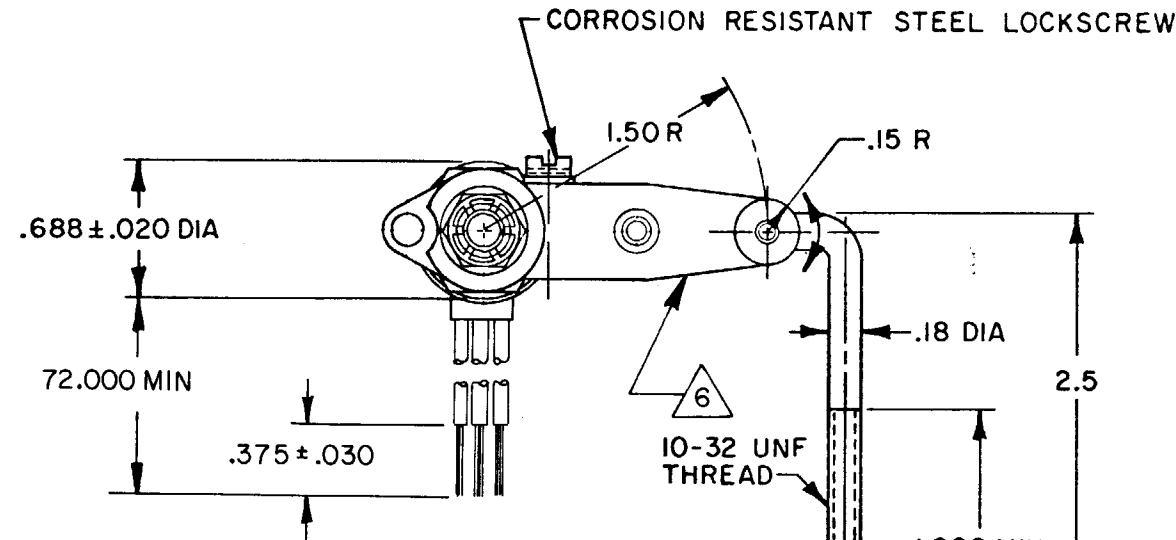
CHECK

CHECK

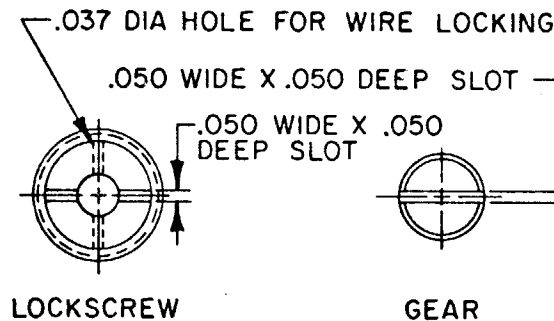
CHECK

CHECK

CHECK



NO.20 WIRE LEAD PER MIL-W-22759/7  
MARKED WITH CIRCUIT IDENTIFICATION AND  
WIRE GAGE (1-20, 2-20 ETC) PER MIL-W-5088 (6)

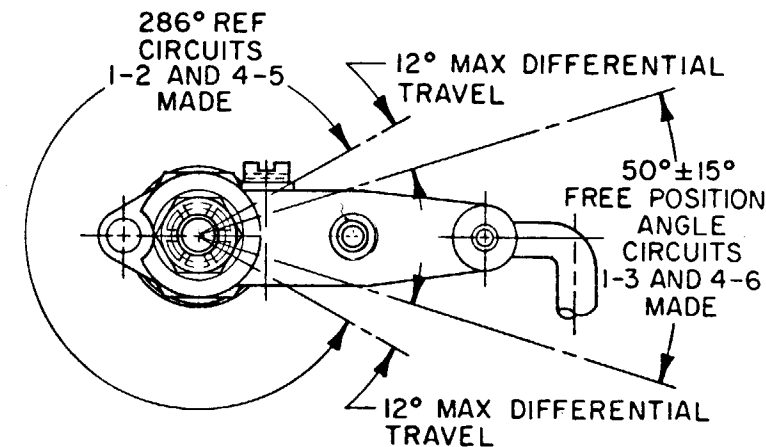
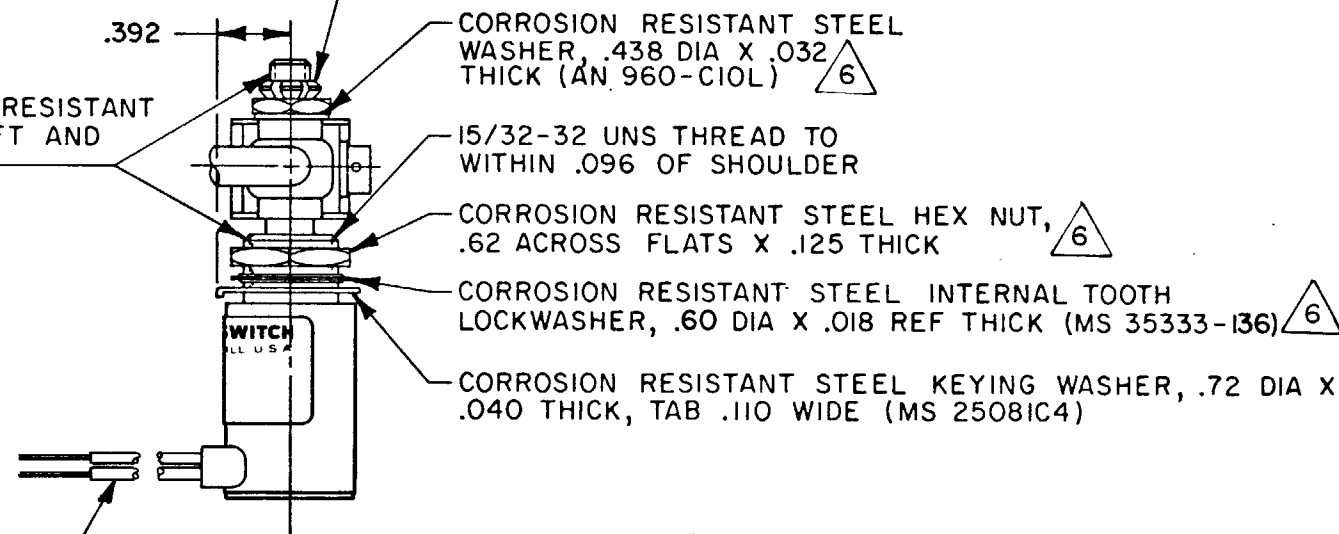


LEVER MAY BE ADJUSTED FOR  
AN INFINITE NUMBER OF POSITIONS  
THRU 360°. ADJUSTMENT IS MADE BY  
LOOSENING THE LOCK NUT AND THEN  
THE LOCKSCREW AND TURNING GEAR  
UNTIL LEVER IS IN DESIRED POSITION.  
LOCKSCREW AND LOCK NUT ON SHAFT  
IS THEN TIGHTENED TO POSITIVELY  
LOCK LEVER IN POSITION.

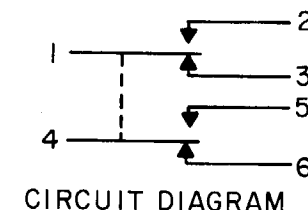
LEVER ADJUSTMENT DETAIL  
SCALE 2 TO 1

CORROSION RESISTANT STEEL  
LOCKING NUT, .37 ACROSS  
FLATS (MS 21083-N3)

CORROSION RESISTANT  
STEEL SHAFT AND  
BUSHING



### CHARACTERISTICS



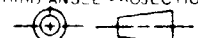
CIRCUIT DIAGRAM

### NOTES

- 1 - CORROSION RESISTANT STEEL ENCLOSURE
- 2 - SWITCH SEALED PER MIL-S-8805 SYMBOL 4
- 3 - CIRCUIT DIAGRAM AND CAT. LIST. ARE SHOWN ON NAMEPLATE
- 4 - UNIT PROVIDES NO SHAFT RESTORING TORQUE. THE ACTUATING DEVICE MUST CONTROL MOVEMENT OF THE SHAFT
- 5 - DO NOT APPLY MORE THAN 20-25 INCH-POUNDS OF TORQUE WHEN TIGHTENING LOCKING NUT
- 6 - HARDWARE MAY BE PACKAGED UNASSEMBLED PER MIL-S-8805

THIS DRAWING COVERS A PROPRIETARY ITEM AND IS THE PROPERTY  
OF MICRO SWITCH, A DIVISION OF HONEYWELL. THIS DRAWING IS NOT  
TO BE COPIED OR USED WITHOUT THE APPROVAL OF MICRO SWITCH.

THIRD ANGLE PROJECTION



SCALE FULL

DO NOT SCALE PRINT

TOLERANCES  
APPLY TO DESIGN UNITS. CONVERSIONS ARE ONLY FOR  
REFERENCE. UNLESS NOTED, TOLERANCES ARE ±

DIM.	TOL.	DIM.	TOL.
mm	mm/in	in	mm/in
NO PLACES	X	1/16	X
ONE PLACE	X.X	0.001	X.X
TWO PLACES	X.XX	0.0001	X.XX
THREE PLACES	X.XXX	0.00001	X.XXX

DESIGN UNITS ☐ METRIC ☒ US CUSTOMARY

RAW MATERIAL - COMMERCIAL STANDARD

MICRO SWITCH STANDARDS APPLY

DIMENSIONS ARE TO BE MET BEFORE

PROTECTIVE COATINGS ARE APPLIED

WEIGHT 7.3 OZ MAX

### CHARACTERISTICS

OPERATING TORQUE - - - - 3 IN LB MAX

### ELECTRICAL DATA

CONTACT ARRANGEMENT  
S P D T (2)

LOAD	SEA LEVEL	50,000 FT.
RES	7	7
IND	4	2.5
MOTOR	4	

PRETRAVEL  
DIFFERENTIAL TRAVEL  
OVERTRAVEL  
FREE POSITION  
SEE DETAIL