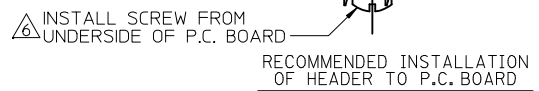
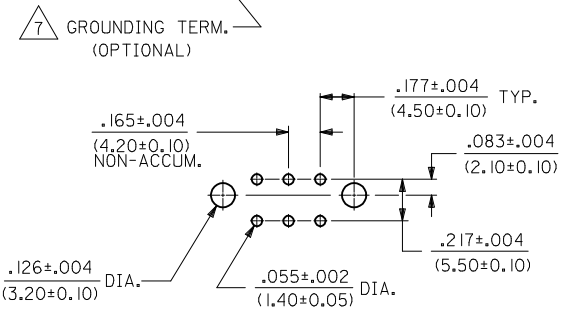
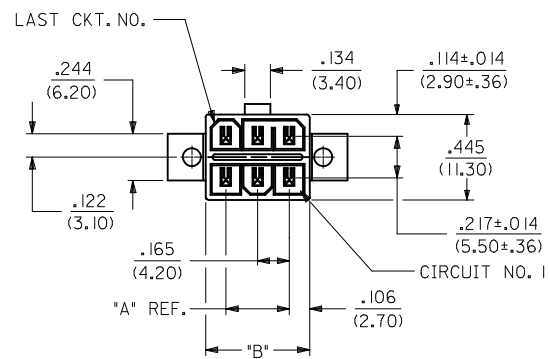
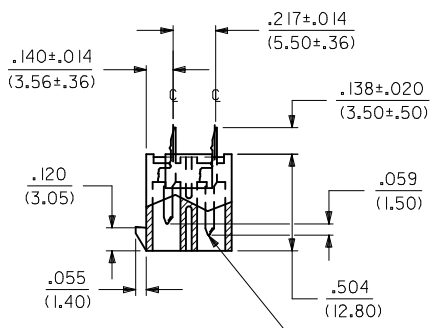
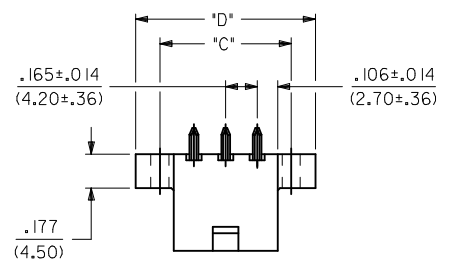
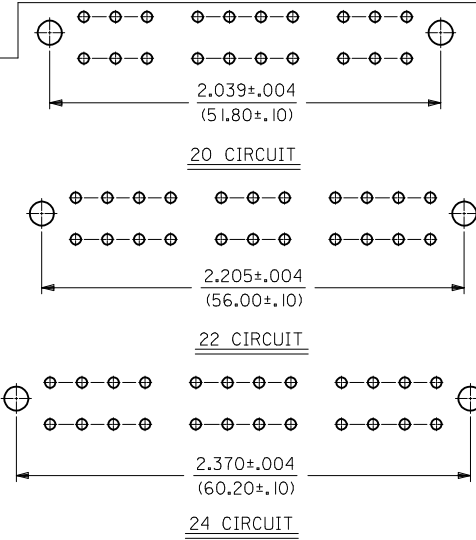
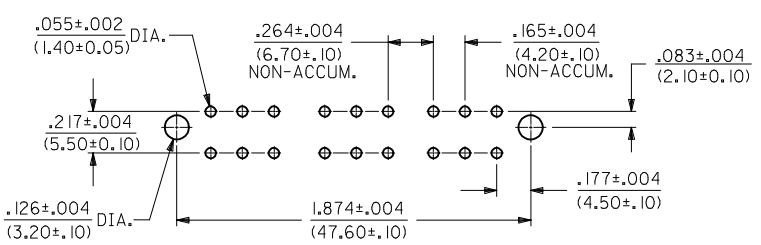


- NOTES:**
- HOUSING MAT'L.: POLYESTER, UNFILLED, 94V-0. COLOR: BLACK. TERMINAL MATERIAL: BRASS ALLOY.
 - PLATINGS:
 - 2 = .000030/(.00076) MIN. SELECT GOLD AND .000100/(.00254) MIN. SELECT MATTE TIN OVER .000050/(.00127) MIN. NICKEL OVERALL.
 - 3 = .000100/(0.00254) MIN. BRIGHT TIN OVER .000050/(0.00127) MIN. NICKEL OVERALL.
 - PRODUCT SPECIFICATION: SEE PS-5556-003.
 - PACKAGING SPECIFICATION: PK-30069-001.
 - PART MATES WITH RECEPTACLE 30067-*.
 - ⚠️ FLANGE MOUNT PART IS DESIGNED FOR USE WITH #4 OR M3 SELF TAPPING SCREWS.
 - ⚠️ SEE CHART ON SHEET 3 FOR STD. TERMINAL, GROUNDING TERMINAL AND VOID LOCATIONS.
 - PARTS ARE NOT TO BE MATED OR UNMATED WHILE CIRCUITS ARE LIVE.
 - ITEM NUMBERS PRECEDED BY AN "X" IN THE CHART ON SHEET 3 ARE NOT AVAILABLE.
 - PART CONFORMS TO CLASS "B" REQUIREMENTS OF COSMETIC SPECIFICATION PS-45499-002.

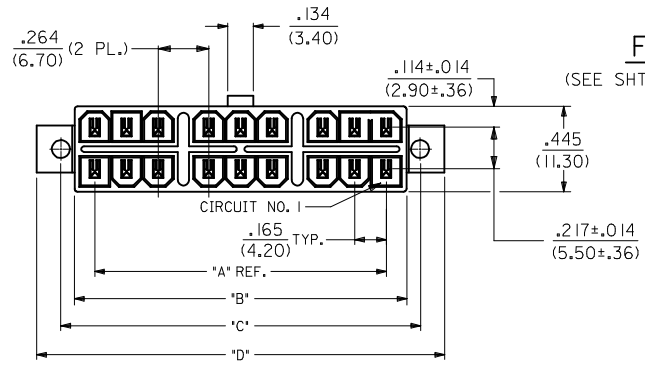


RECOMMENDED HOLE LAYOUT FOR .070/(1.78) MAX. THICK P.C. BOARD



LETTER DIMENSIONS FOR ASSEMBLIES WITH FLANGES				
CKT. SIZE	DIM. "A"	DIM. "B"	DIM. "C"	DIM. "D"
2	—	.213 (5.40)	.354 (9.00)	.606 (15.40)
4	.165 (4.20)	.378 (9.60)	.520 (13.20)	.772 (19.60)
6	.331 (8.40)	.543 (13.80)	.685 (17.40)	.937 (23.80)
8	.496 (12.60)	.709 (18.00)	.850 (21.60)	1.102 (28.00)
10	.661 (16.80)	.874 (22.20)	1.016 (25.80)	1.268 (32.20)
12	.827 (21.00)	1.039 (26.40)	1.181 (30.00)	1.433 (36.40)
14	.992 (25.20)	1.205 (30.60)	1.346 (34.20)	1.598 (40.60)
16	1.157 (29.40)	1.370 (34.80)	1.512 (38.40)	1.764 (44.80)
18	1.520 (38.60)	1.732 (44.00)	1.874 (47.60)	2.126 (54.00)
20	1.685 (42.80)	1.898 (48.20)	2.039 (51.80)	2.291 (58.20)
22	1.850 (47.00)	2.063 (52.40)	2.205 (56.00)	2.457 (62.40)
24	2.016 (51.20)	2.228 (56.60)	2.370 (60.20)	2.622 (66.60)

FLANGE MOUNT
(SEE SHT. 2 FOR PARTS WITH PEGS)



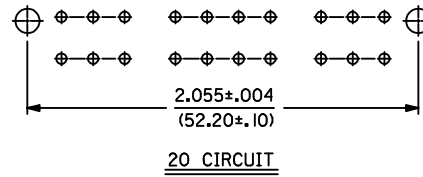
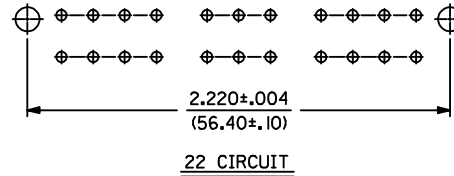
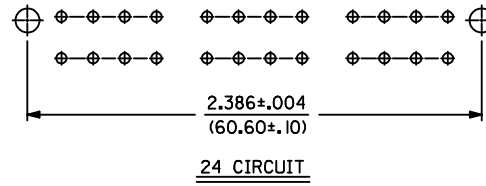
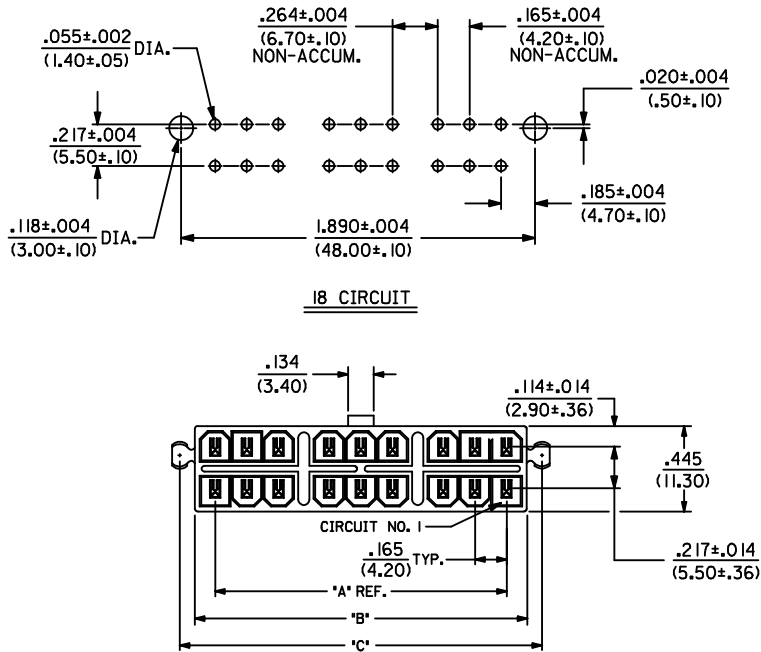
ADD PCB VIEW	QUALITY SYMBOLS	GENERAL TOLERANCES (UNLESS SPECIFIED)	DIMENSION STYLE	SCALE	DESIGN UNITS	THIRD ANGLE PROJECTION
EC NO: UCP2014-0298	▽=0	mm INCH	IN/MM	2:1	INCH	
DRW: NGUYEN 2013/08/05	▽=0	4 PLACES ± --- ± ---	DRAWN BY DATE			
CHKD: BELL 2013/08/05	▽=0	3 PLACES ± --- ± .010	GEP 1994/07/28			
APPR: FSMITH 2013/08/16	▽=0	2 PLACES ± 0.25 ± .014	RJF 1994/07/28			
		1 PLACE ± 0.36 ± ---	APPROVED BY DATE			
		0 PLACE ± ±	FSMITH 2011/02/11			
		ANGULAR ±1/2°	MATERIAL NO.			
		DRAFT WHERE APPLICABLE MUST REMAIN WITHIN DIMENSIONS	SEE CHART			

VERT. HEADER ASSY., SELECTIVELY LOADED, MINI-FIT T.P.A. SERIES

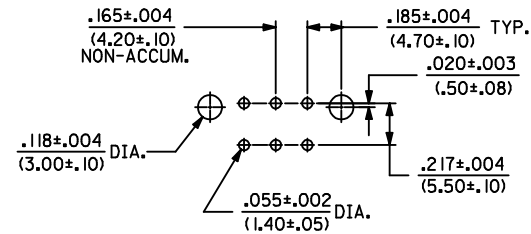
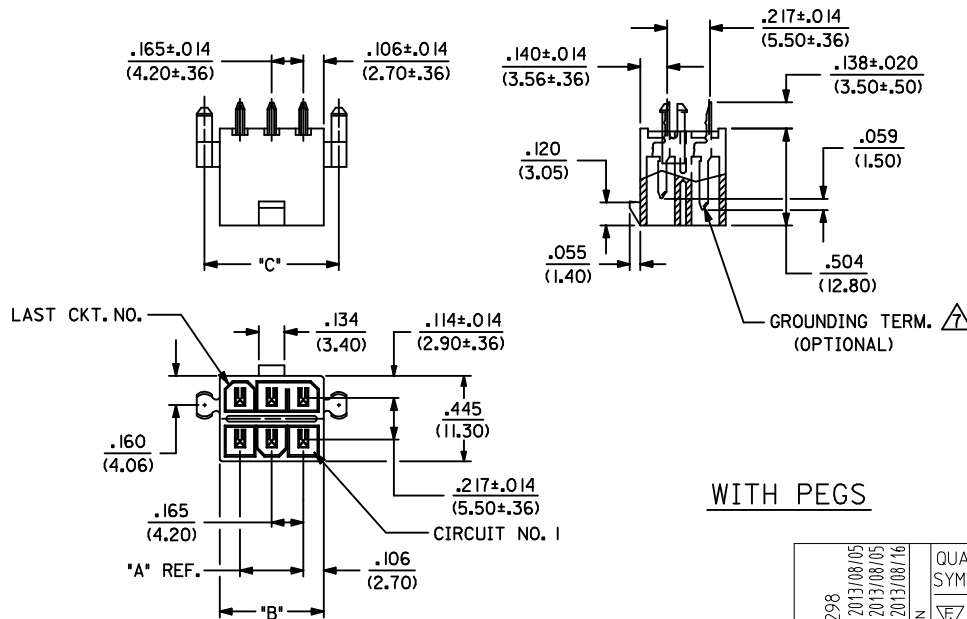
molex

DOCUMENT NO. SDA-44482-**** SHEET NO. 1 OF 3

THIS DRAWING CONTAINS INFORMATION THAT IS PROPRIETARY TO MOLEX INCORPORATED AND SHOULD NOT BE USED WITHOUT WRITTEN PERMISSION



LETTER DIMENSIONS FOR ASSEMBLIES WITH PEGS			
CKT. SIZE	DIM. "A"	DIM. "B"	DIM. "C"
2	—	.213 (5.40)	.370 (9.40)
4	.165 (4.20)	.378 (9.60)	.535 (13.60)
6	.331 (8.40)	.543 (13.80)	.701 (17.80)
8	.496 (12.60)	.709 (18.00)	.866 (22.00)
10	.661 (16.80)	.874 (22.20)	1.031 (26.20)
12	.827 (21.00)	1.039 (26.40)	1.197 (30.40)
14	.992 (25.20)	1.205 (30.60)	1.362 (34.60)
16	1.157 (29.40)	1.370 (34.80)	1.528 (38.80)
18	1.520 (38.60)	1.732 (44.00)	1.890 (48.00)
20	1.685 (42.80)	1.898 (48.20)	2.055 (52.20)
22	1.850 (47.00)	2.063 (52.40)	2.220 (56.40)
24	2.016 (51.20)	2.228 (56.60)	2.386 (60.60)



RECOMMENDED HOLE LAYOUT FOR .070/(1.78) MAX. THICK P.C. BOARD

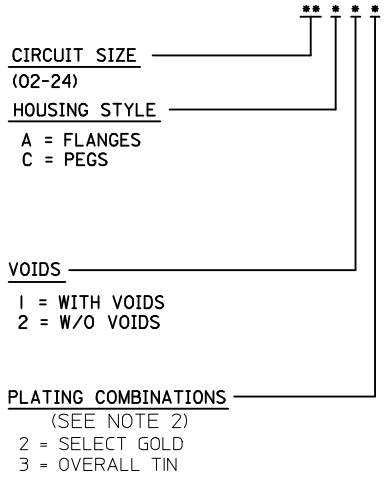
WITH PEGS

SEE SHEET 1 EC NO: UCP2014-0298 DRAWN: NGUYEN CHKD: JELL APPR: FSMITH	REV E5	DESCRIPTION 2013/08/05 2013/08/05 2013/08/16	QUALITY SYMBOLS ▽=0 ▽=0 ▽=0	GENERAL TOLERANCES (UNLESS SPECIFIED)		DIMENSION STYLE IN/MM		SCALE 2:1	DESIGN UNITS INCH	THIRD ANGLE PROJECTION	
				4 PLACES ± --- ± ---	3 PLACES ± --- ± .010	2 PLACES ± 0.25 ± .014	1 PLACE ± 0.36 ± ---	0 PLACE ± ±	DRAWN BY GEP	DATE 1994/07/28	CHECKED BY RJF
ANGULAR ±1/2°				MATERIAL NO. SEE CHART		DOCUMENT NO. SDA-44482-****		SHEET NO. 2 OF 3		THIS DRAWING CONTAINS INFORMATION THAT IS PROPRIETARY TO MOLEX INCORPORATED AND SHOULD NOT BE USED WITHOUT WRITTEN PERMISSION	

ITEM NO.	CHARACTERISTIC DESCRIPTION	TERMINAL VERSION REQUIRED AT EACH CIRCUIT LOCATION: (SEE CODES AT RIGHT)																								TERM. I.D. CODES FOR CHART AT LEFT	
		1	2	3	4	5	6	7	8	9	10	11	12	13	14	15	16	17	18	19	20	21	22	23	24	TERMINAL TYPE	PLATING (NOTE 2)
44482-0001	12A12	2	2	2	4	2	2	2	2	2	-	2	2													"-" = VOID LOC.	N/A
X 44482-0002	12A22	2	2	2	4	2	2	2	2	2	2	2	2													"2" = STD. TERM., SELECT. GOLD	2
44482-0004	12A12	2	2	2	4	2	2	2	2	2	2	2	-													"4" = GROUNDING TERM., SELECT. GOLD	2
44482-0005	12A12	2	2	2	4	2	2	2	2	2	-	2	-													"5" = STD. TERM, TIN	3
44482-0006	16A13	5	5	5	-	5	5	5	5	5	5	5	5	5	5	5										"6" = STD. GROUNDING TERM, TIN	3
44482-0007	16A13	5	5	5	5	5	5	5	5	5	-	5	5	5	5	5											
44482-0008	12A12	2	-	2	2	2	2	2	2	2	2	2	2														
44482-9901	12A12	2	2	2	4	2	2	2	2	2	-	2	2														

SEE NOTE 9

CHARACTERISTICS LEGEND:



SEE SHEET 1 EC NO: UCP2014-0298 DRW: NGUYEN 2013/08/05 CHKD: JBELL 2013/08/05 APPR: FSMITH 2013/08/16	QUALITY SYMBOLS	GENERAL TOLERANCES (UNLESS SPECIFIED)	DIMENSION STYLE	SCALE	DESIGN UNITS	THIRD ANGLE PROJECTION
	▽=0	mm INCH	IN/MM		INCH	
	▽=0	4 PLACES ± --- ± ---	DRAWN BY DATE	TITLE		
	▽=0	3 PLACES ± --- ± .010	CHECKED BY DATE	VERT. HEADER ASSY., SELECTIVELY LOADED, MINI-FIT T.P.A. SERIES		
	▽=0	2 PLACES ± 0.25 ± .014	APPROVED BY DATE	molex DOCUMENT NO. SDA-44482-**** SHEET NO. 3 OF 3		
	1 PLACE ± 0.36 ± ---	FSMITH 2011/02/11				
	0 PLACE ± ±	MATERIAL NO.	THIS DRAWING CONTAINS INFORMATION THAT IS PROPRIETARY TO MOLEX INCORPORATED AND SHOULD NOT BE USED WITHOUT WRITTEN PERMISSION			
		ANGULAR ±1/2°	SEE CHART			
		DRAFT WHERE APPLICABLE MUST REMAIN WITHIN DIMENSIONS				