

MICRO SWITCH

FREEPORT ILLINOIS U.S.A.
A DIVISION OF HONEYWELL

FED. MFG. CODE 91929

SWITCH - ENCLOSED

CATALOG LISTING
45EN1-6

45EN1-6

M

DRAWING
NUMBER

ISSUE

REVISIONS

REVISIONS

A	CO	44351
S	L	28 NOV 79
B	PR	8489T
KAR		3 MAR 80
C	CO	47573
YSM		11 AUG 80
D	CO	48806
YSK		28 SEPT 81
E	CO	51725-D
CJH		11 JAN 83
F	CO	75787-C
DAW		11 MAY 84

REPLACES

RELEASE NO. PR-8489-T

CHECK

CHECK

CHECK

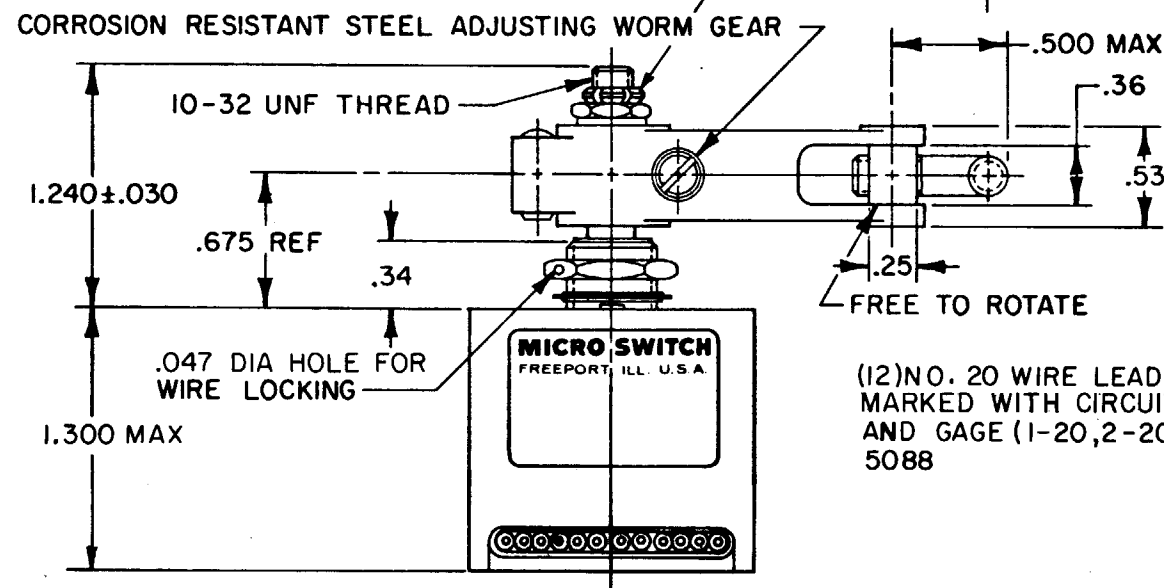
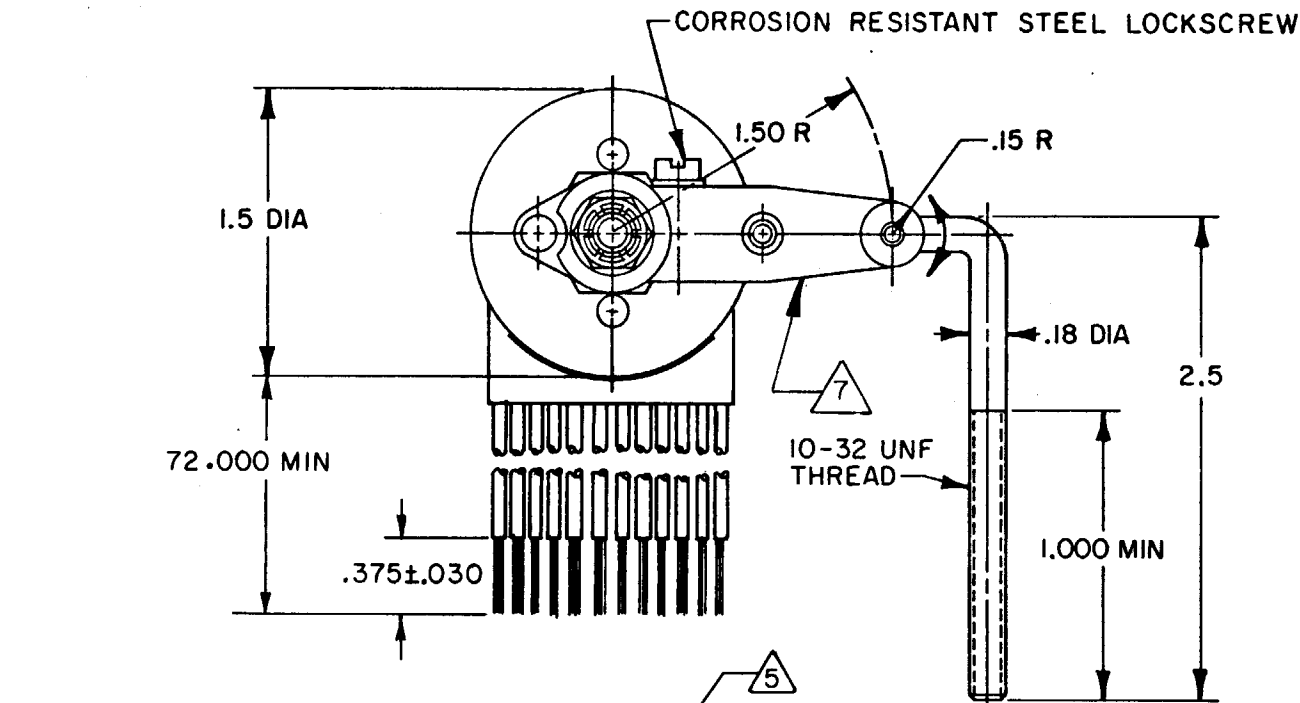
CHECK

CHECK

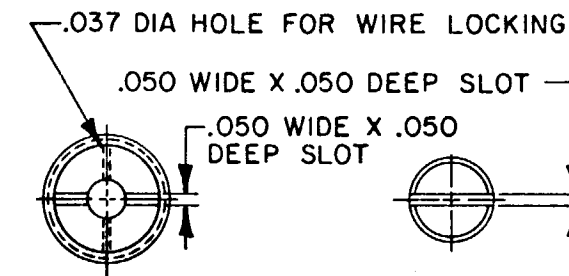
CHECK

CHECK

CHECK

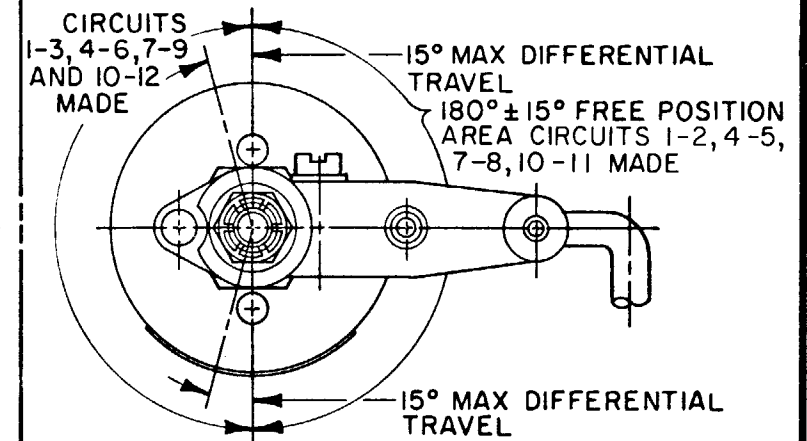


(12) NO. 20 WIRE LEAD PER SPEC MIL-W-22759/7
MARKED WITH CIRCUIT IDENTIFICATION
AND GAGE (1-20, 2-20, ETC) PER MIL-W-5088

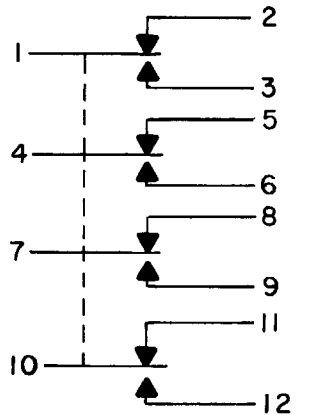


LEVER MAY BE ADJUSTED FOR AN INFINITE NUMBER OF POSITIONS THRU 360°. ADJUSTMENT IS MADE BY LOOSENING THE LOCK NUT AND THEN THE LOCKSCREW AND TURNING GEAR UNTIL LEVER IS IN DESIRED POSITION. LOCKSCREW AND LOCK NUT ON SHAFT IS THEN TIGHTENED TO POSITIVELY LOCK LEVER IN POSITION.

LEVER ADJUSTMENT DETAIL
SCALE 2 TO 1



CHARACTERISTICS



CIRCUIT DIAGRAM

CORROSION RESISTANT STEEL LOCKING NUT, .37 ACROSS FLATS (MS 21083-C3)

CORROSION RESISTANT STEEL SHAFT, BUSHING AND PINS

CORROSION RESISTANT STEEL WASHER, .438 DIA X .032 THICK (AN 960-C10L)

15/32-32 UNS THREAD TO WITHIN .062 OF SHOULDER

CORROSION RESISTANT STEEL HEX NUT, .62 ACROSS FLATS X .125 THICK

CORROSION RESISTANT STEEL INTERNAL TOOTH LOCKWASHER, .60 DIA X .018 REF THICK (MS 35333-136)

.140 DIA X .062 HIGH PINS (2) LOCATED ON .765 DIA CENTERS

NOTES

- 1 - CORROSION RESISTANT STEEL ENCLOSURE
- 2 - SWITCH SEALED PER MIL-S-8805 SYMBOL 4
- 3 - CIRCUIT DIAGRAM AND CATALOG LISTING ARE SHOWN ON NAMEPLATE
- 4 - UNIT PROVIDES NO SHAFT RESTORING TORQUE. THE ACTUATING DEVICE MUST CONTROL MOVEMENT OF THE SHAFT
- 5 - DO NOT APPLY MORE THAN 20-25 INCH-POUNDS OF TORQUE WHEN TIGHTENING LOCKING NUT
- 6 - LEADS PARALLEL WITH CENTERLINE OF MOUNTING PINS WITHIN 10°
- 7 - HARDWARE MAY BE PACKAGED UNASSEMBLED PER MIL-S-8805

THIS DRAWING COVERS A PROPRIETARY ITEM AND IS THE PROPERTY OF MICRO SWITCH, A DIVISION OF HONEYWELL. THIS DRAWING IS NOT TO BE COPIED OR USED WITHOUT THE APPROVAL OF MICRO SWITCH.

THIRD ANGLE PROJECTION

SCALE FULL

DO NOT SCALE PRINT

TOLERANCES
APPLY TO DESIGN UNITS. CONVERSIONS ARE ONLY FOR REFERENCE. UNLESS NOTED, TOLERANCES ARE 2

DIM.	TOL.	DIM.	TOL.
mm	mm/in	in	mm/in
NO PLACES	X	1/04	X X
ONE PLACE	X, X	0.4/016	X X
TWO PLACES	X, XX	0.15/008	X, XX
THREE PLACES	X, XXX	0.001/005	X, XXX

SI METRIC

DESIGN UNITS

RAW MATERIAL - COMMERCIAL STANDARD

MICRO SWITCH STANDARDS APPLY

DIMENSIONS ARE TO BE MET BEFORE PROTECTIVE COATINGS ARE APPLIED

WEIGHT 14.7 OZ MAX

CHARACTERISTICS

OPERATING TORQUE ----- 10 IN LB MAX

PRETRAVEL
DIFFERENTIAL TRAVEL
OVERTRAVEL
FREE POSITION
SEE DETAIL

ELECTRICAL DATA

CONTACT ARRANGEMENT

S P D T (4)

28 VDC

LOAD	SEA LEVEL	50,000 FT.
RES	4	4
IND	3	1
MOTOR	4	
LAMP	2 4	2 4